



# WILDSUN K9 WASH

PHOTOMETRY



**AYRTON**

Digital Lighting



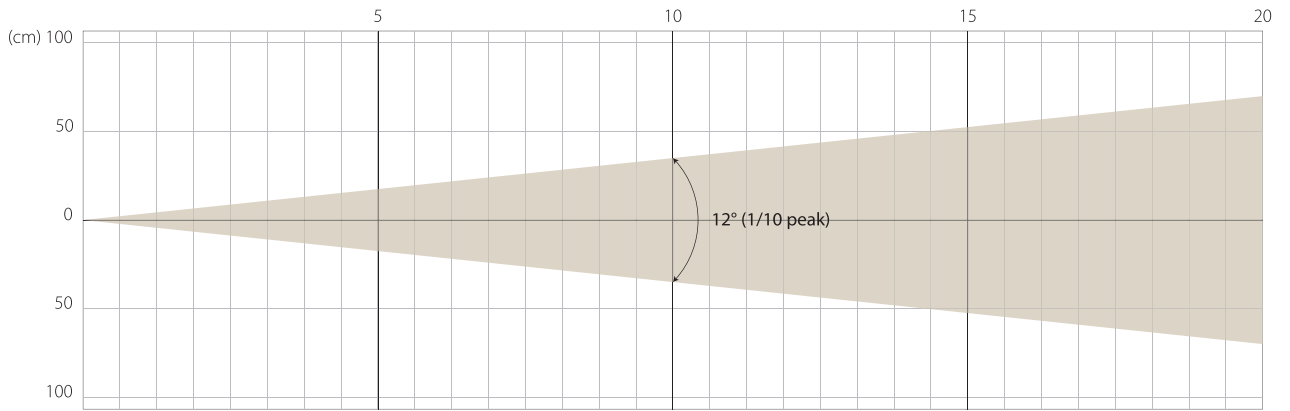


<b>Total Flux</b>	62,419 lm (Goniometer, fan mode Stage, wide zoom)	
<b>CCT White chip</b>	5700 K (±500 K)	
<b>Ra White chip</b>	92 (±2)	
<b>TLCl White chip</b>	97	
<b>TM-30 White chip</b>	Rf: 91.7 Rg: 99.7	
<b>Fan Mode</b>	<b>Noise Level (dBA)</b>	<b>by Goniometer (lm)</b>
Auto	44	59,572
Stage	49	62,419
Silence	38	32,449
Super Silence	35	16,433
Note: noise measured @1m distance, static status, ambient 31 dBA.		
<b>Voltage / Power</b>	100-240V, 50-60Hz	1500 W
<b>Fixture Dimension / Weight</b>	530 x 625 x 280 mm	26.9 kg
<b>Packing Dimension / Weight</b>	595 x 360 x 740 mm	41 kg

# AUTO MODE

MIN ZOOM

## BEAM OPENING

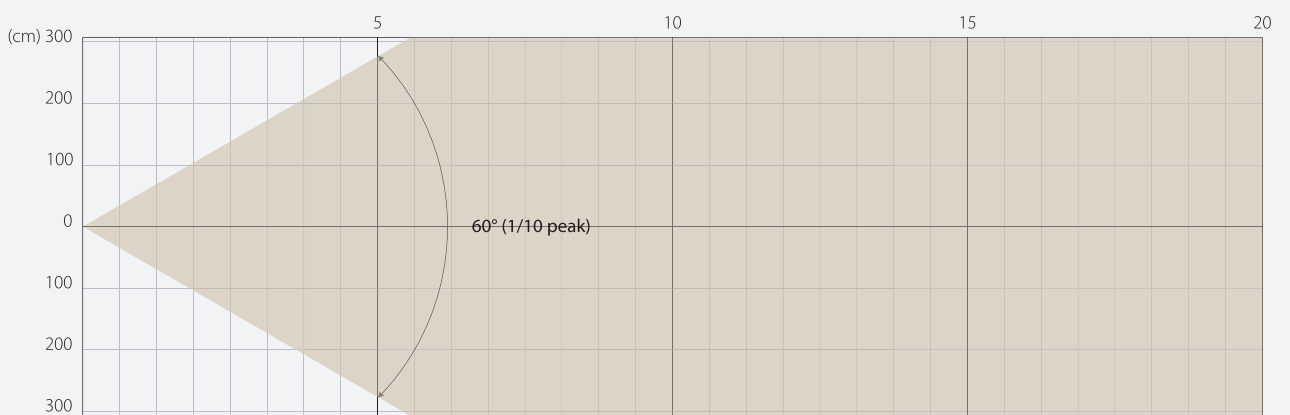


## INTENSITY

Distance (m)	5		10		15		20	
unit	lux	diameter	lux	diameter	lux	diameter	lux	diameter
White	73115	0,35	18279	0,7	8124	1,05	4570	1,4

MAX ZOOM

## BEAM OPENING



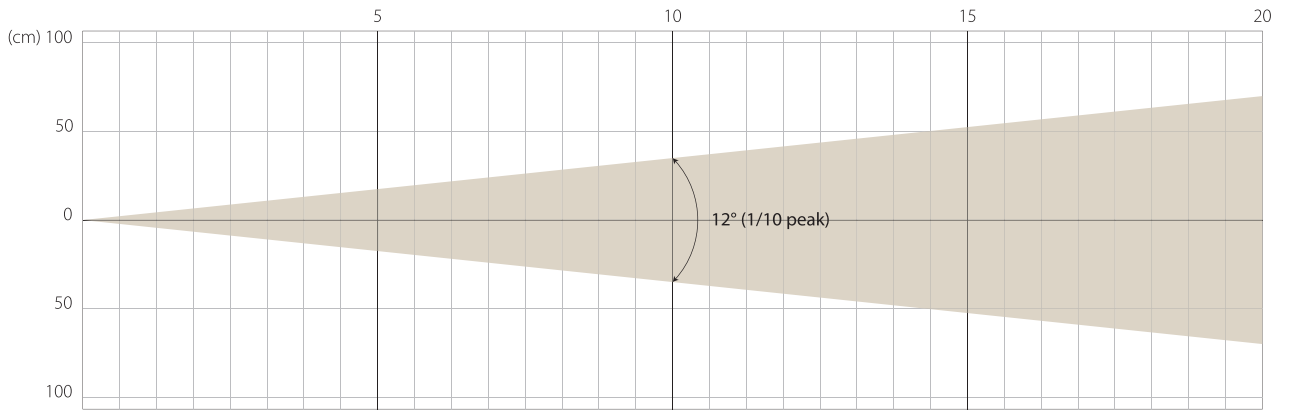
## INTENSITY

Distance (m)	5		10		15		20	
unit	lux	diameter	lux	diameter	lux	diameter	lux	diameter
White	7337	5,54	1834	11,09	815	16,63	459	22,17

# STAGE MODE

MIN ZOOM

## BEAM OPENING

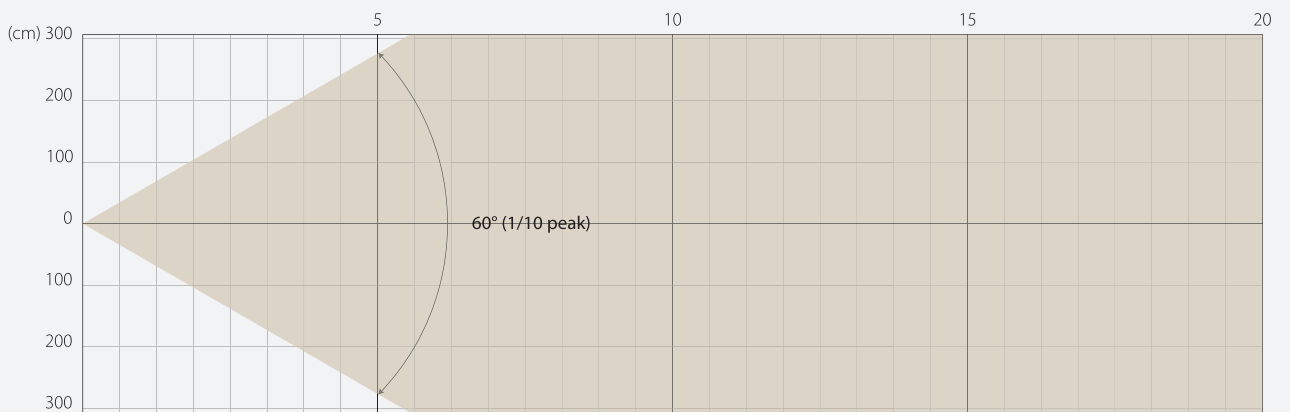


## INTENSITY

Distance (m)	5		10		15		20	
unit	lux	diameter	lux	diameter	lux	diameter	lux	diameter
White	72177	0,35	18044	0,7	8020	1,05	4511	1,4

MAX ZOOM

## BEAM OPENING



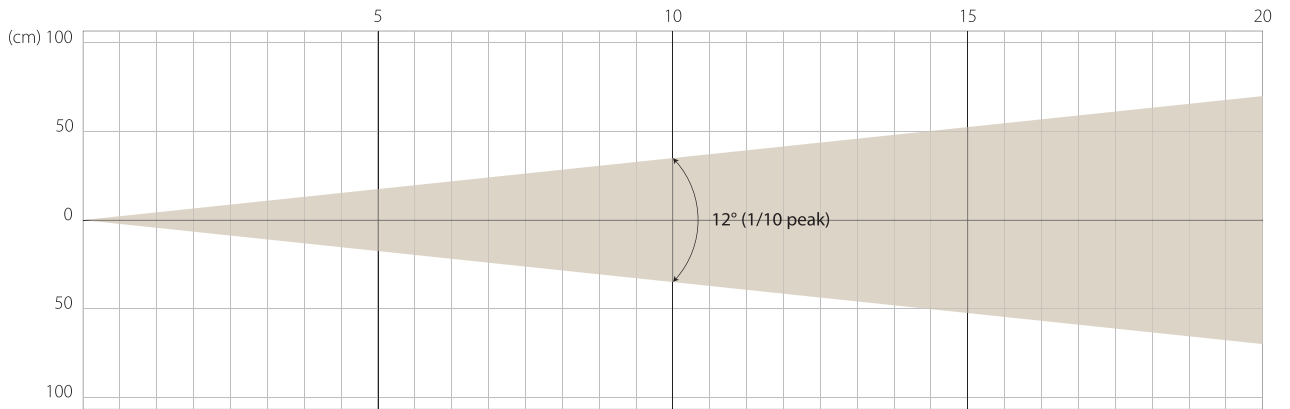
## INTENSITY

Distance (m)	5		10		15		20	
unit	lux	diameter	lux	diameter	lux	diameter	lux	diameter
White	7615	5,54	1904	11,09	846	16,63	476	22,17

# SILENCE MODE

MIN ZOOM

## BEAM OPENING

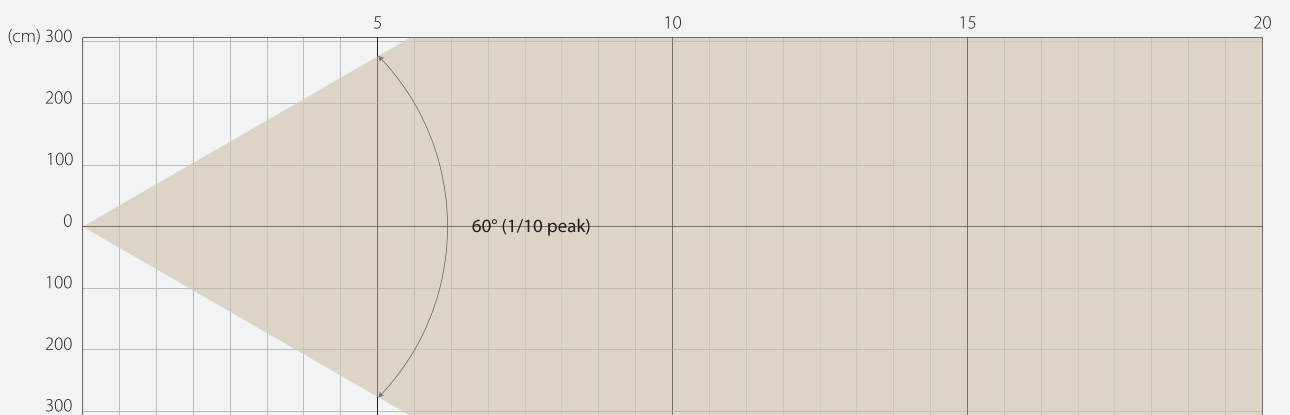


## INTENSITY

Distance (m)	5		10		15		20	
unit	lux	diameter	lux	diameter	lux	diameter	lux	diameter
White	40515	0,35	10129	0,7	4502	1,05	2532	1,4

MAX ZOOM

## BEAM OPENING



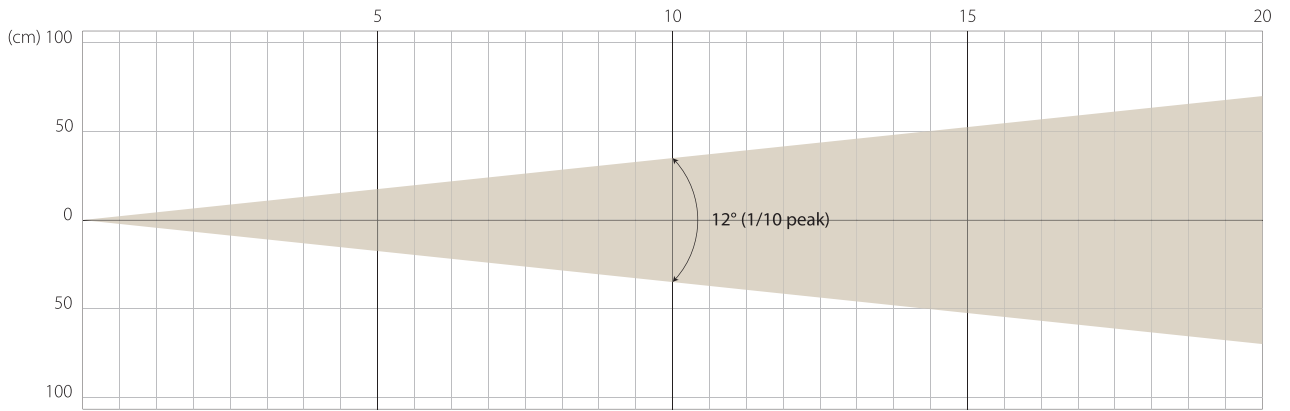
## INTENSITY

Distance (m)	5		10		15		20	
unit	lux	diameter	lux	diameter	lux	diameter	lux	diameter
White	3922	5,54	980	11,09	436	16,63	245	22,17

# SUPER SILENCE MODE

MIN ZOOM

## BEAM OPENING

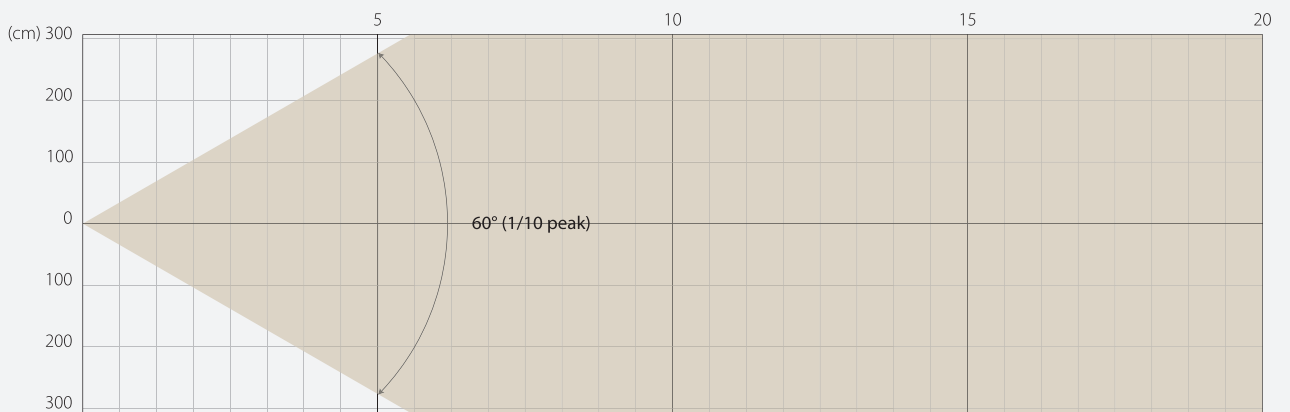


## INTENSITY

Distance (m)	5		10		15		20	
unit	lux	diameter	lux	diameter	lux	diameter	lux	diameter
White	20553	0,35	5138	0,7	2284	1,05	1285	1,4

MAX ZOOM

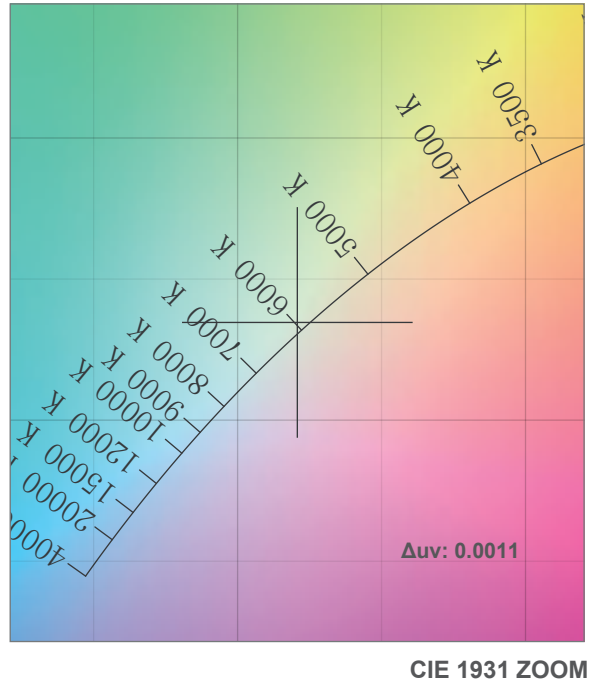
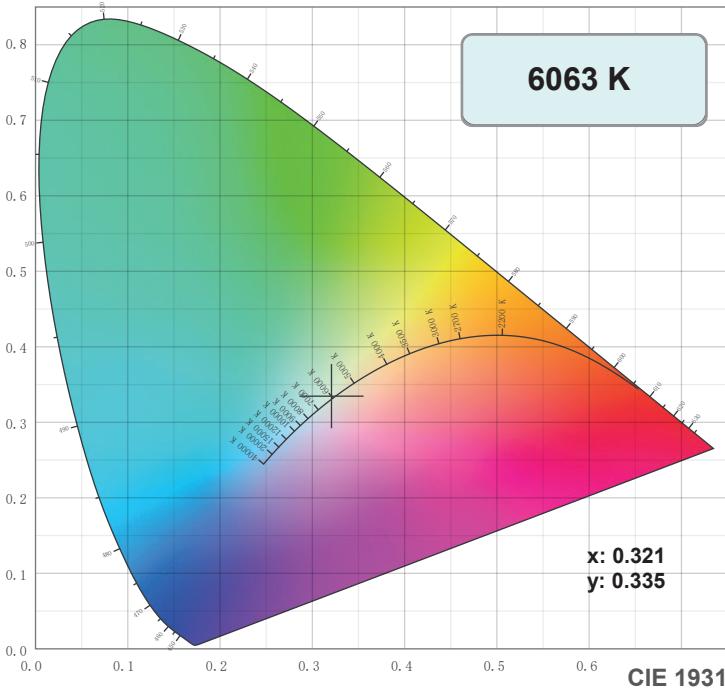
## BEAM OPENING



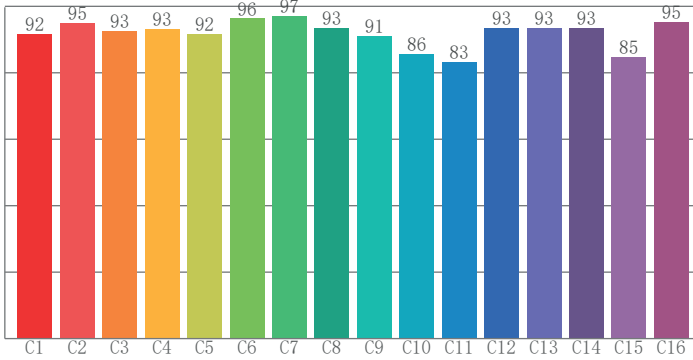
## INTENSITY

Distance (m)	5		10		15		20	
unit	lux	diameter	lux	diameter	lux	diameter	lux	diameter
White	2001	5,54	500	11,09	222	16,63	125	22,17

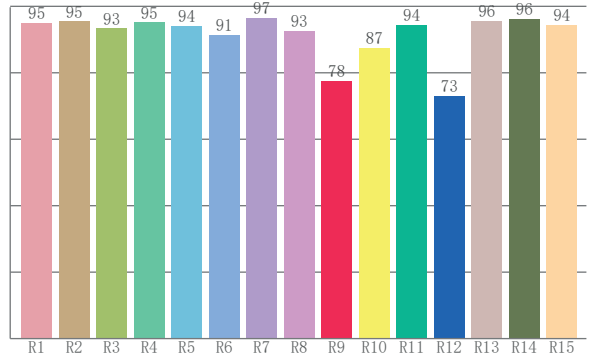
# COLOR DETAILS



**TM-30: 91.7**



**CRI: 94.2 (R1-R8)**



**CRI R values, only R1-R8 are used to calculate final CRI value**

R1	R2	R3	R4	R5	R6	R7	R8	R9	R10	R11	R12	R13	R14	R15
95.1	95.5	93.3	95.2	94.0	91.4	96.5	92.6	77.5	87.5	94.5	73.1	95.6	96.2	94.4

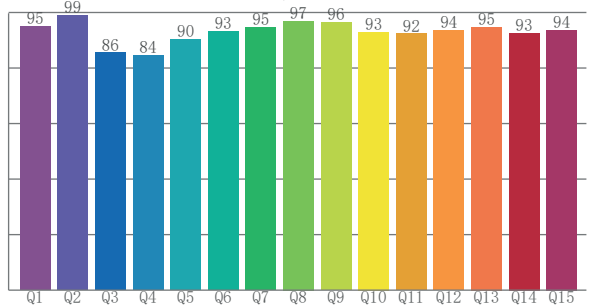
**TM30 C values, 16 binned values out of total of 99 C values**

C1	C2	C3	C4	C5	C6	C7	C8	C9	C10	C11	C12	C13	C14	C15	C16
91.7	95.1	92.6	93.3	91.7	96.3	97.2	93.4	91.0	85.8	83.3	93.5	93.4	93.5	84.9	95.3

**CQS Q values**

Q1	Q2	Q3	Q4	Q5	Q6	Q7	Q8	Q9	Q10	Q11	Q12	Q13	Q14	Q15
94.9	98.9	85.5	84.5	90.3	93.2	94.7	96.9	96.4	93.0	92.3	93.6	94.8	92.6	93.7

**CQS: 92.1**



## Color parameters

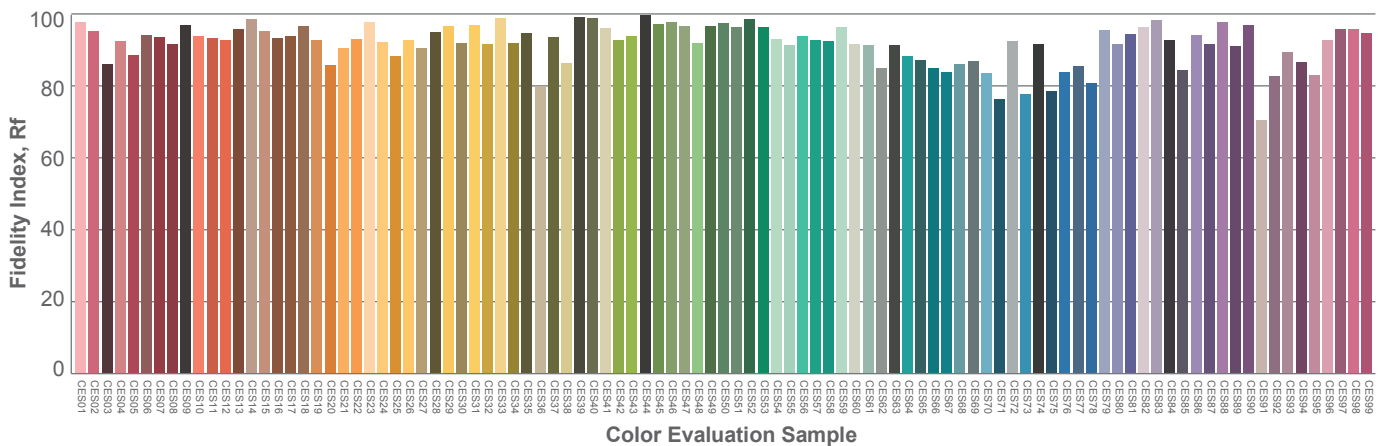
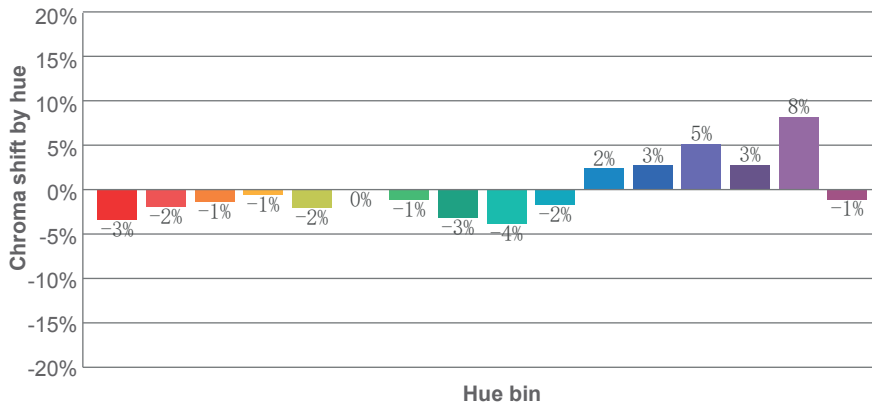
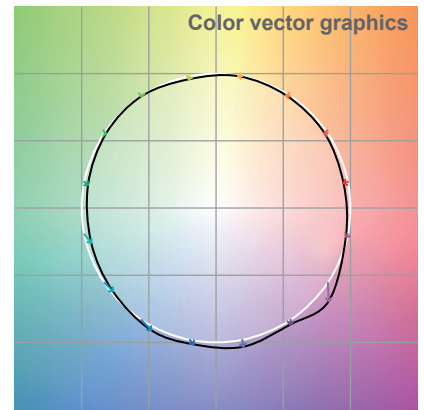
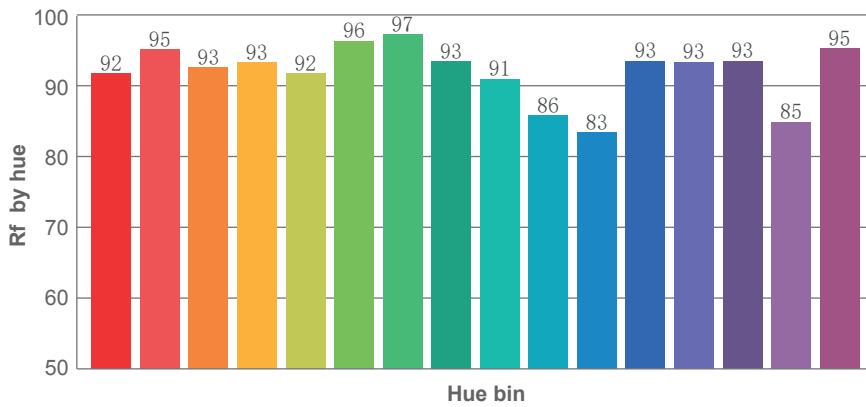
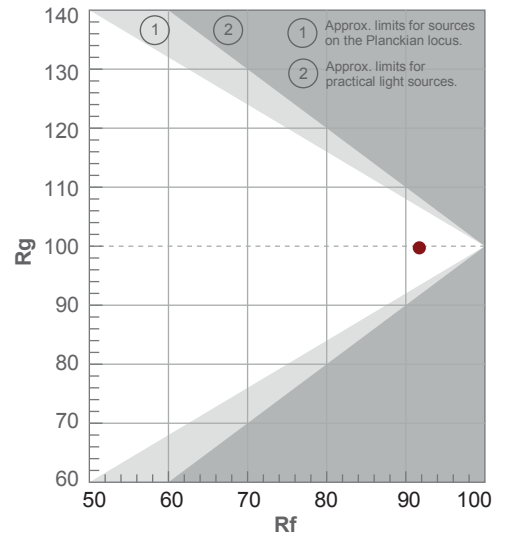
Color temperature	Color rendering index	Red component	Color fidelity	Color gamut	Color quality scale	Color coordinate cie 1931	Color coordinate cie 1931	Color coordinate	Color coordinate	Color deviation from black body
CCT	CRI	CRI R9	TM30 Rf	TM30 Rg	CQS	x	y	u	v	Δuv
6063 K	94.2	77.5	91.7	99.7	92.1	0.321	0.335	0.201	0.315	0.0011

# TM-30 DETAILS

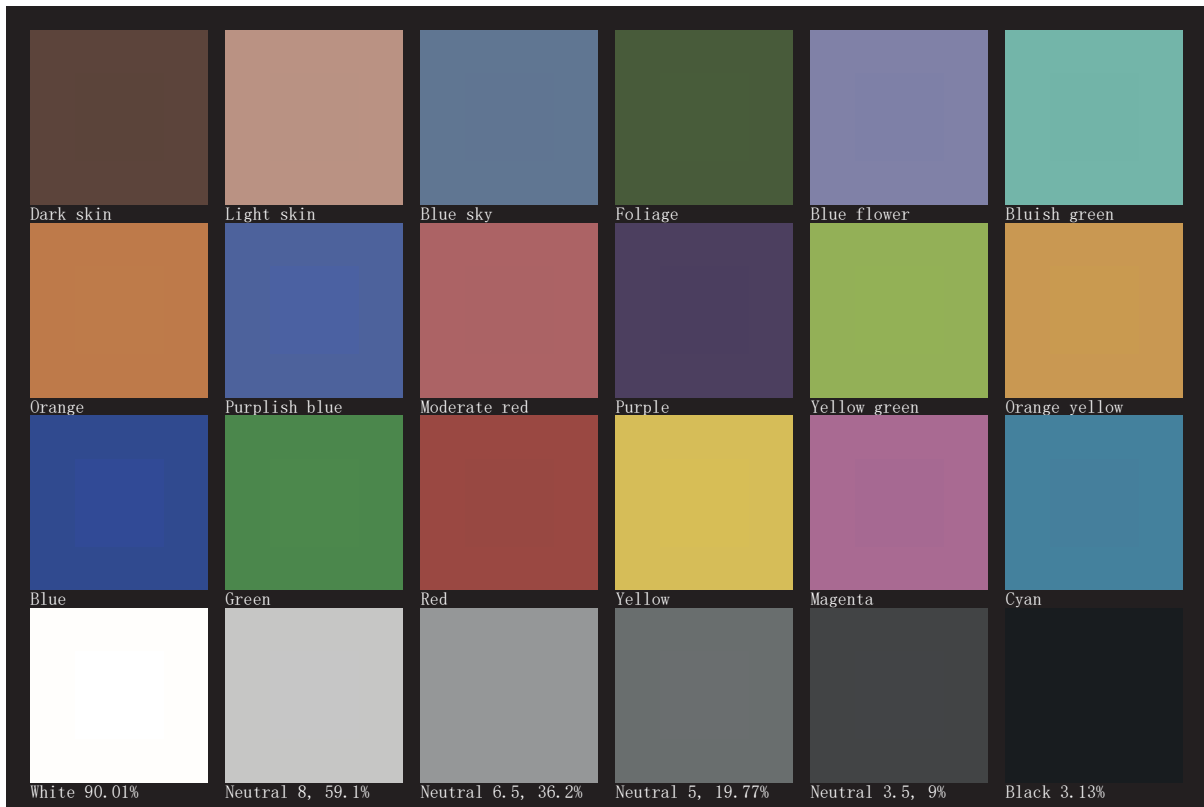
**Rf 91.7**  
Fidelity index Rf

**Rg 99.7**  
Gamut index Rg

Hue Bin	R <sub>f</sub>	Shifts (%)	
		Chroma	Hue
1	92	-3%	0%
2	95	-2%	2%
3	93	-1%	3%
4	93	-1%	3%
5	92	-2%	1%
6	96	0%	0%
7	97	-1%	-1%
8	93	-3%	2%
9	91	-4%	7%
10	86	-2%	9%
11	83	2%	10%
12	93	3%	3%
13	93	5%	0%
14	93	3%	-2%
15	85	8%	-11%
16	95	-1%	-2%



# TLCI 97







**AYRTON**

Digital Lighting