



# DOMINO PROFILE TC

PHOTOMETRY



**AYRTON**  
Digital Lighting





<b>Total Flux</b>	36,400 lm (@zoom 128, integrating sphere measurement, Fan mode stage)
-------------------	---

<b>CCT @LED engin</b>	7000 (±500K)
<b>CCT @open</b>	6500 (±500K)
<b>Ra @open</b>	95 (±2)
<b>TLCI</b>	96
<b>TM-30</b>	Rf: 91.0 Rg: 99.7

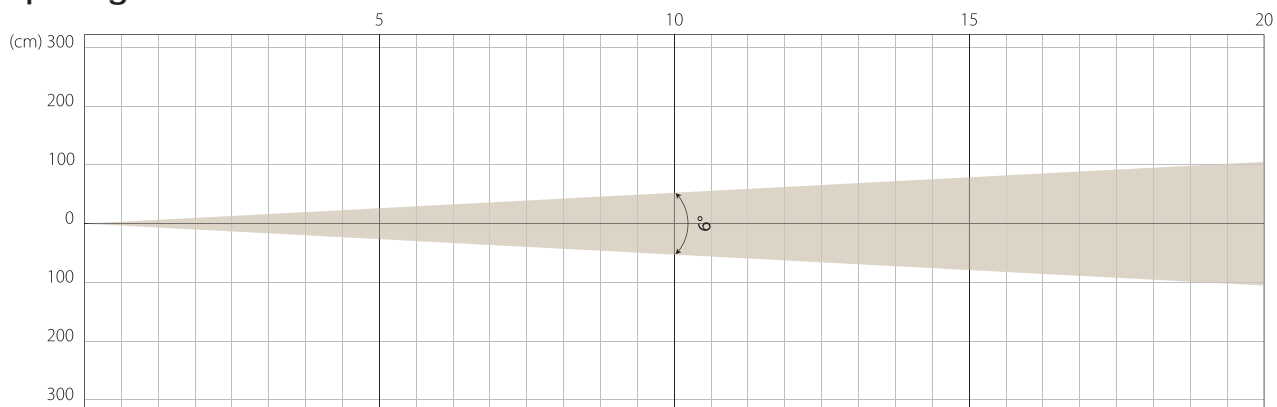
<b>Fan Mode</b>	<b>Noise Level (dBA)</b>	<b>by Goniometer (lm)</b>	<b>by Sphere (lm)</b>
<b>Auto</b>	44,3	22177	36100
<b>Stage</b>	50	22535	36400
<b>Silence</b>	41,1	14402	22800
<b>Super Silence</b>	35,6	10802	18200

Note: noise measured @1m distance, static status, ambient 31 dBA.

<b>Voltage / Power</b>	100-240V, 50-60Hz	1700 W
<b>Fixture Dimension / Weight</b>	490 x 841 x 330 mm	52.5 kg
<b>Packing Dimension / Weight</b>	730 x 765 x 570 mm	70.5 kg

MIN ZOOM

## Beam Opening

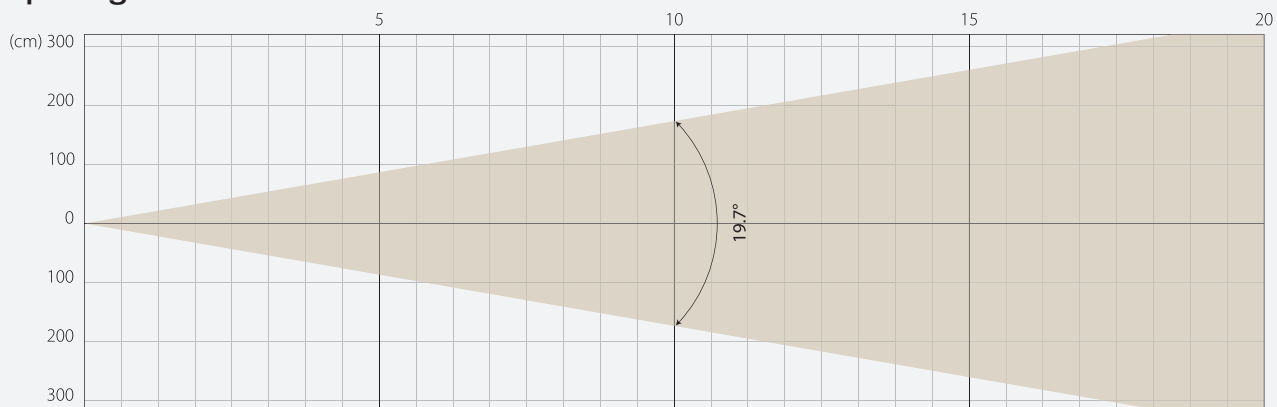


## Intensity

Distance (m)	5		10		15		20	
unit	lux	diameter	lux	diameter	lux	diameter	lux	diameter
White	55369	0,52	13842	1,05	6152	1,57	3461	2,1

MIDDLE ZOOM

## Beam Opening

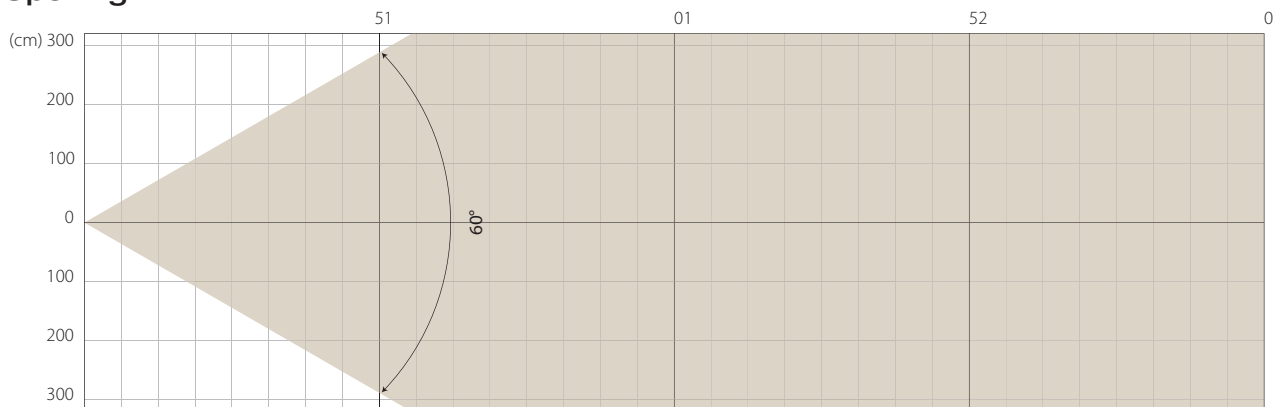


## Intensity

Distance (m)	5		10		15		20	
unit	lux	diameter	lux	diameter	lux	diameter	lux	diameter
White	9769	1,74	2442	3,47	1085	5,21	611	6,95

MAX ZOOM

## Beam Opening



## Intensity

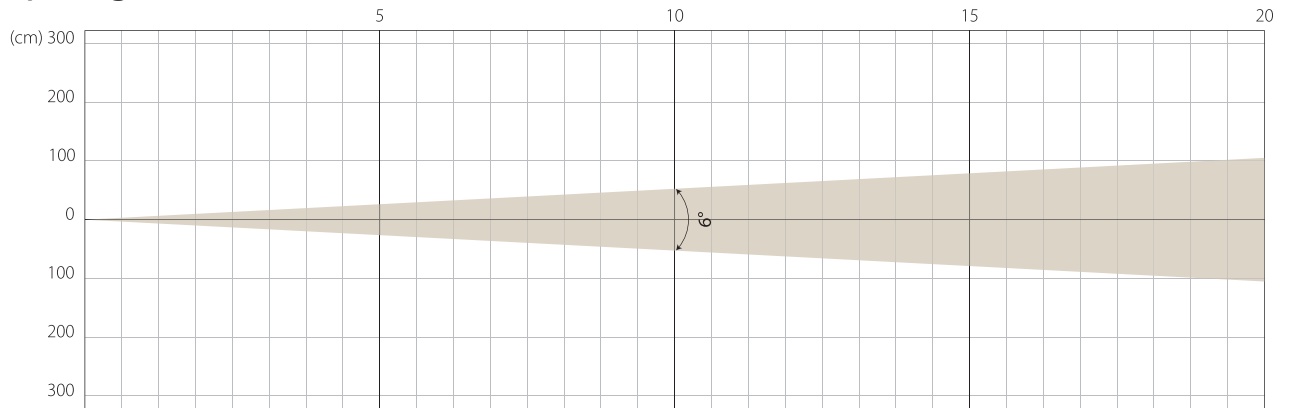
Distance (m)	5		10		15		20	
unit	lux	diameter	lux	diameter	lux	diameter	lux	diameter
White	1363	5,77	341	11,55	151	17,32	85	23,09

# STAGE MODE

NATIVE CRI GREATER THAN 90

MIN ZOOM

## Beam Opening

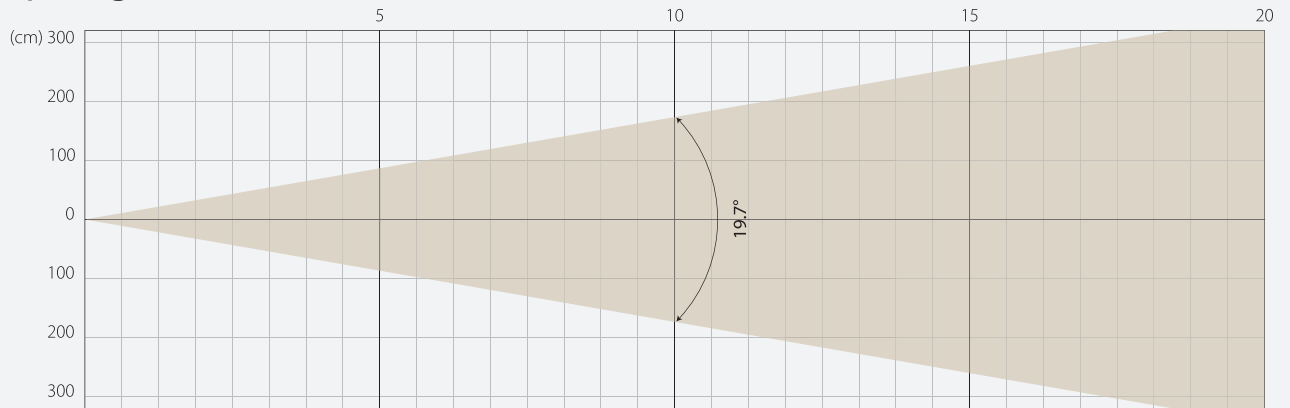


## Intensity

Distance (m)	5		10		15		20	
unit	lux	diameter	lux	diameter	lux	diameter	lux	diameter
White	57740	0,52	14435	1,05	6416	1,57	3609	2,1

MIDDLE ZOOM

## Beam Opening

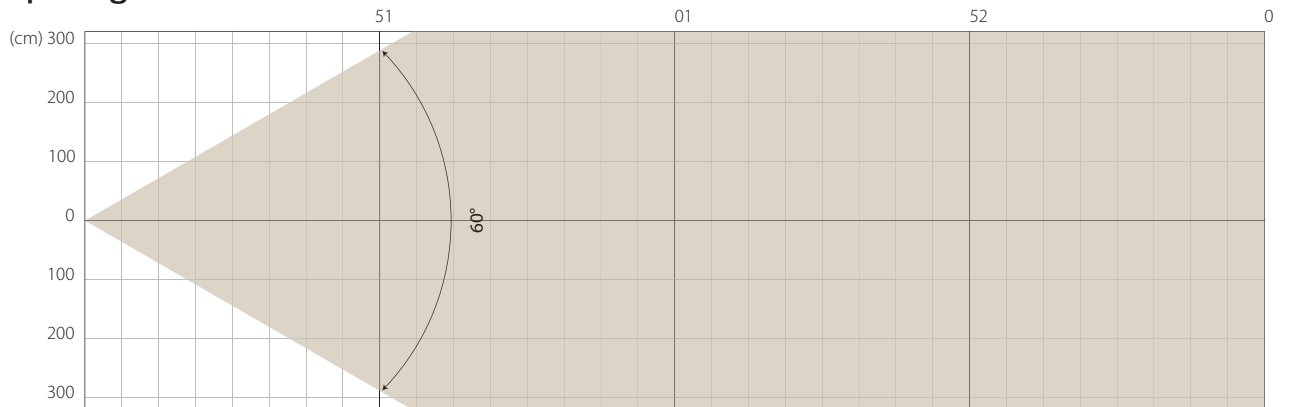


## Intensity

Distance (m)	5		10		15		20	
unit	lux	diameter	lux	diameter	lux	diameter	lux	diameter
White	10059	1,74	2515	3,47	1118	5,21	629	6,95

MAX ZOOM

## Beam Opening

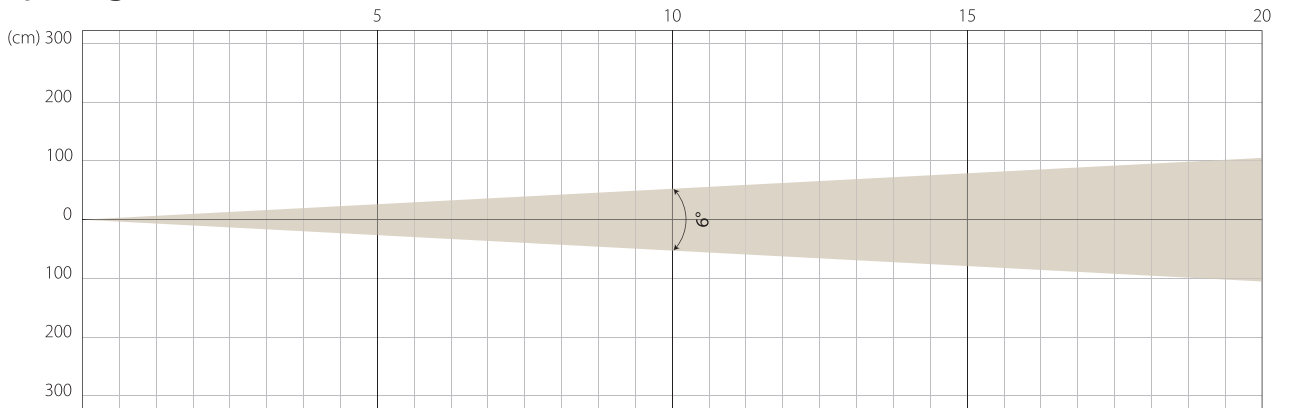


## Intensity

Distance (m)	5		10		15		20	
unit	lux	diameter	lux	diameter	lux	diameter	lux	diameter
White	1399	5,77	350	11,55	155	17,32	87	23,09

MIN ZOOM

## Beam Opening

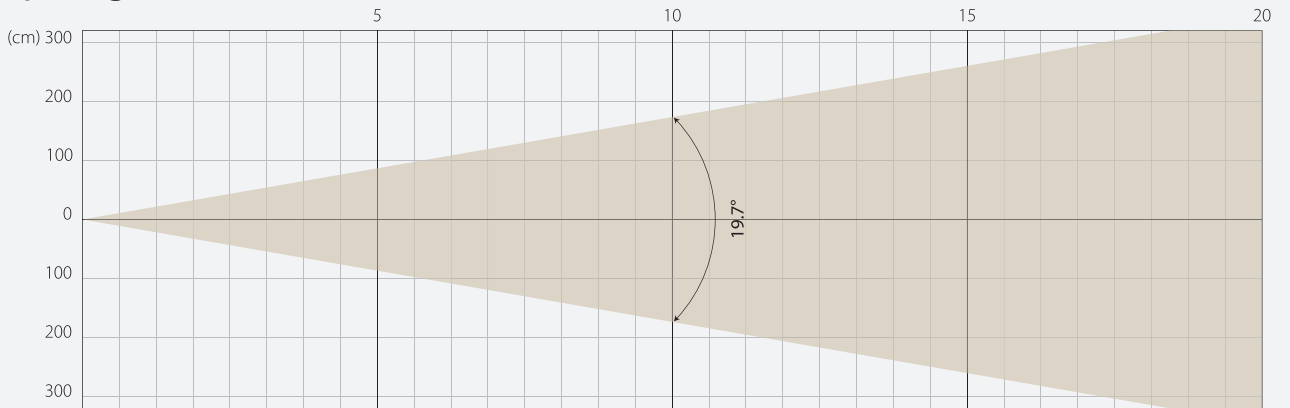


## Intensity

Distance (m)	5		10		15		20	
unit	lux	diameter	lux	diameter	lux	diameter	lux	diameter
White	35585	0,52	8896	1,05	3954	1,57	2225	2,1

MIDDLE ZOOM

## Beam Opening

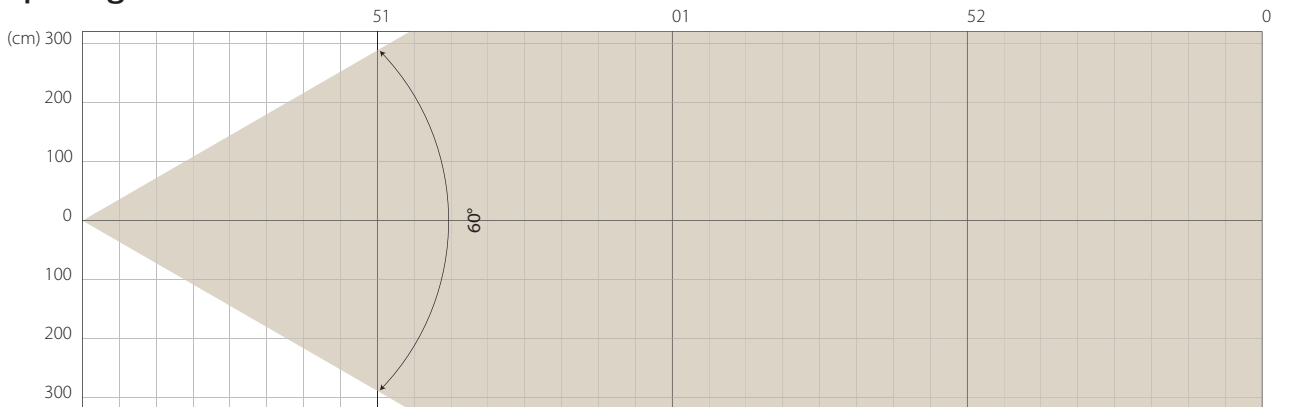


## Intensity

Distance (m)	5		10		15		20	
unit	lux	diameter	lux	diameter	lux	diameter	lux	diameter
White	6303	1,74	1576	3,47	700	5,21	394	6,95

MAX ZOOM

## Beam Opening



## Intensity

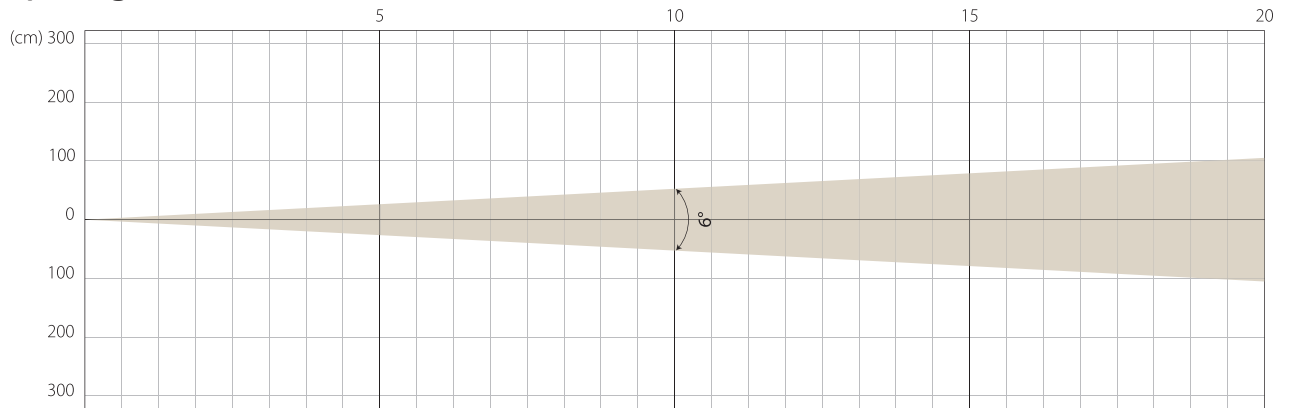
Distance (m)	5		10		15		20	
unit	lux	diameter	lux	diameter	lux	diameter	lux	diameter
White	876	5,77	219	11,55	97	17,32	55	23,09

# SUPER SILENCE MODE

NATIVE CRI GREATER THAN 90

MIN ZOOM

## Beam Opening

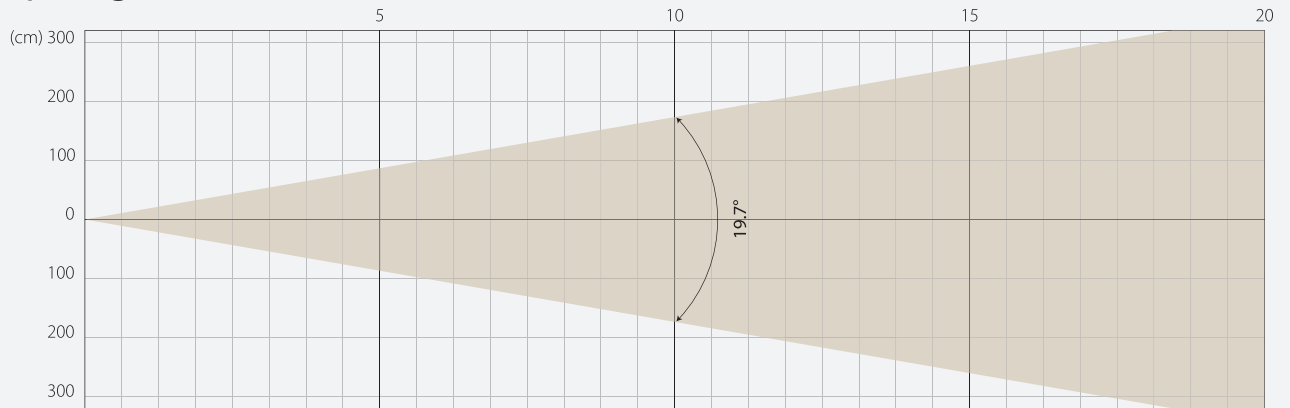


## Intensity

Distance (m)	5		10		15		20	
unit	lux	diameter	lux	diameter	lux	diameter	lux	diameter
White	27091	0,52	6773	1,05	3010	1,57	1693	2,1

MIDDLE ZOOM

## Beam Opening

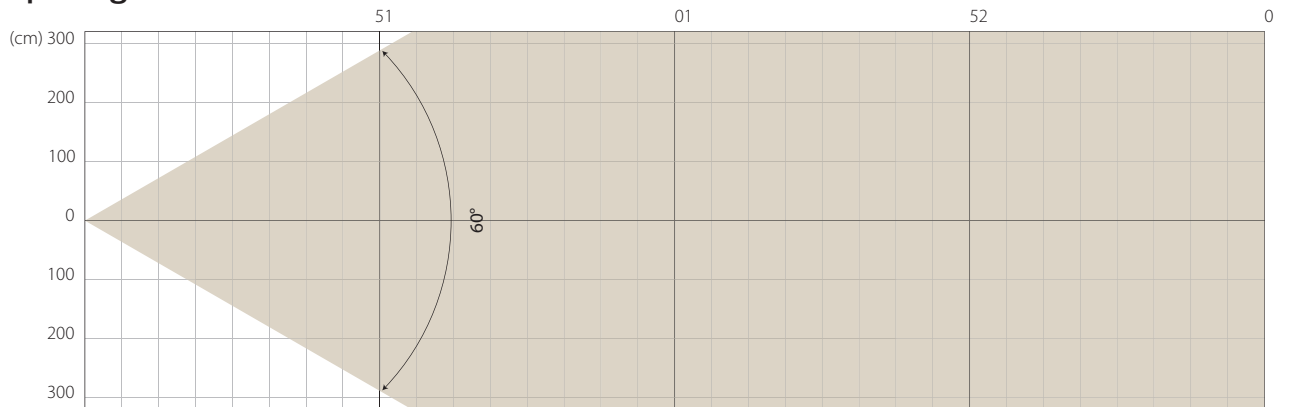


## Intensity

Distance (m)	5		10		15		20	
unit	lux	diameter	lux	diameter	lux	diameter	lux	diameter
White	4715	1,74	1179	3,47	524	5,21	295	6,95

MAX ZOOM

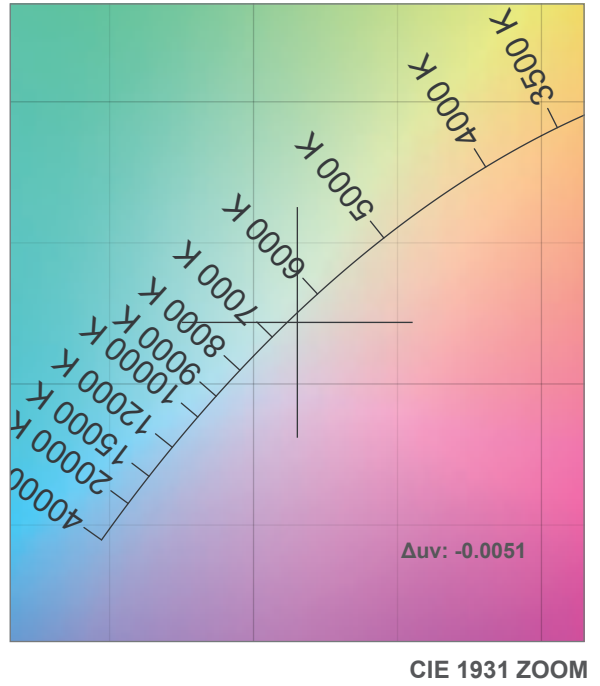
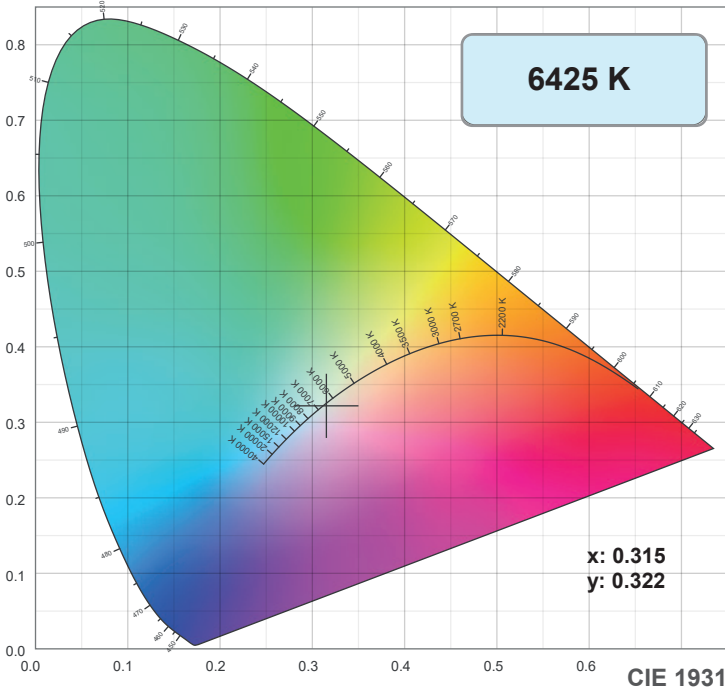
## Beam Opening



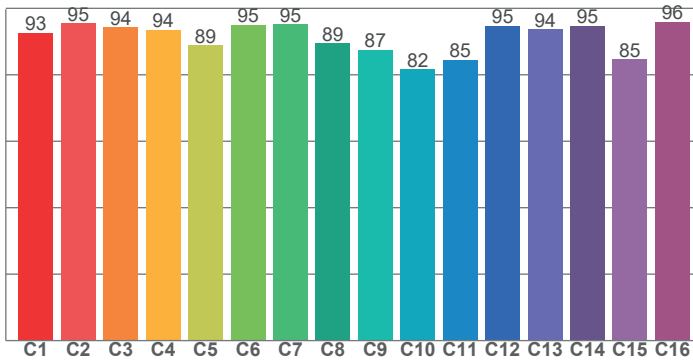
## Intensity

Distance (m)	5		10		15		20	
unit	lux	diameter	lux	diameter	lux	diameter	lux	diameter
White	652	5,77	163	11,55	72	17,32	41	23,09

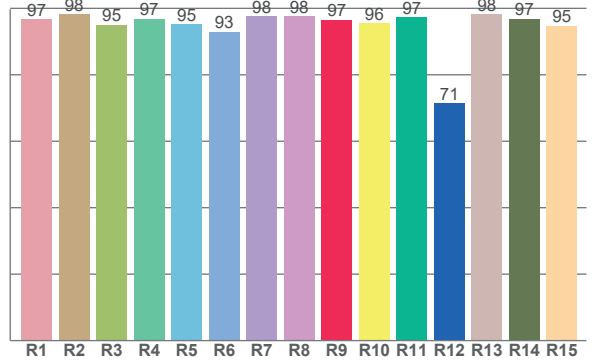
# COLOR DETAILS



**TM-30: 91.0**



**CRI: 96.3 (R1-R8)**



CRI R values, only R1-R8 are used to calculate final CRI value

R1	R2	R3	R4	R5	R6	R7	R8	R9	R10	R11	R12	R13	R14	R15
96.7	98.2	95.1	96.9	95.2	92.9	97.6	97.7	96.6	95.6	97.2	71.5	98.2	96.9	94.8

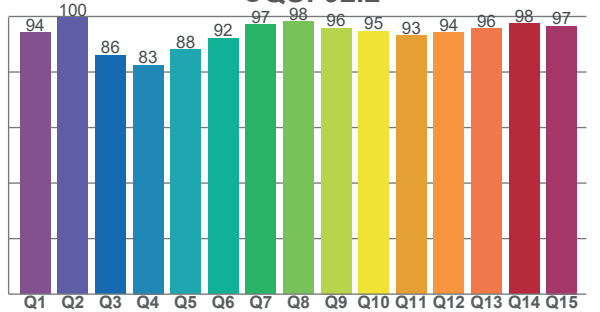
TM30 C values, 16 binned values out of total of 99 C values

C1	C2	C3	C4	C5	C6	C7	C8	C9	C10	C11	C12	C13	C14	C15	C16
92.6	95.4	94.2	93.6	88.9	95.0	95.2	89.4	87.5	81.6	84.6	94.8	93.7	94.7	84.6	96.0

CQS Q values

Q1	Q2	Q3	Q4	Q5	Q6	Q7	Q8	Q9	Q10	Q11	Q12	Q13	Q14	Q15
94.1	99.6	86.0	82.5	88.0	92.2	97.1	98.2	95.9	94.7	93.0	94.2	95.6	97.5	96.6

**CQS: 92.2**



## Color parameters

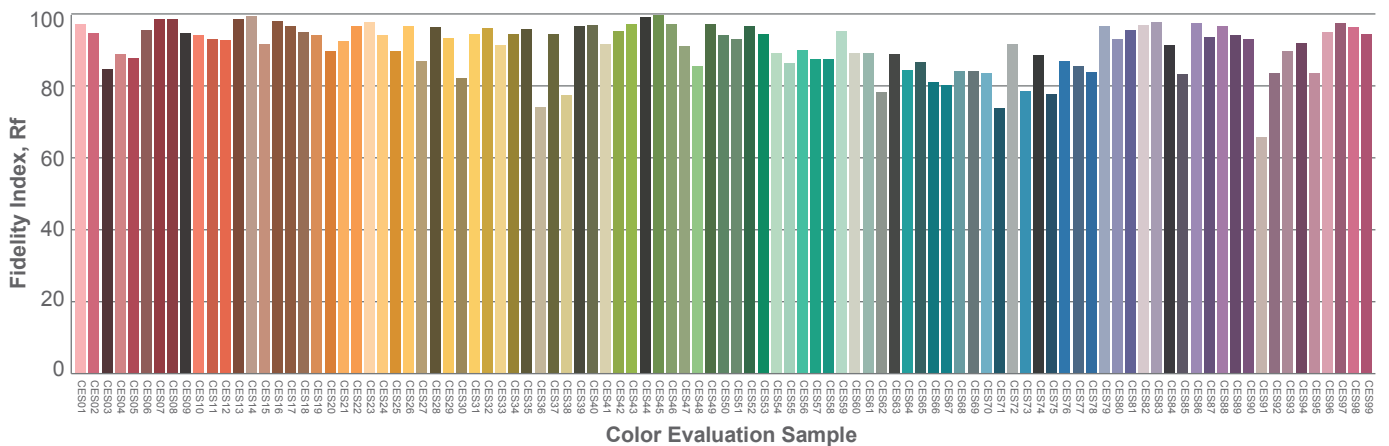
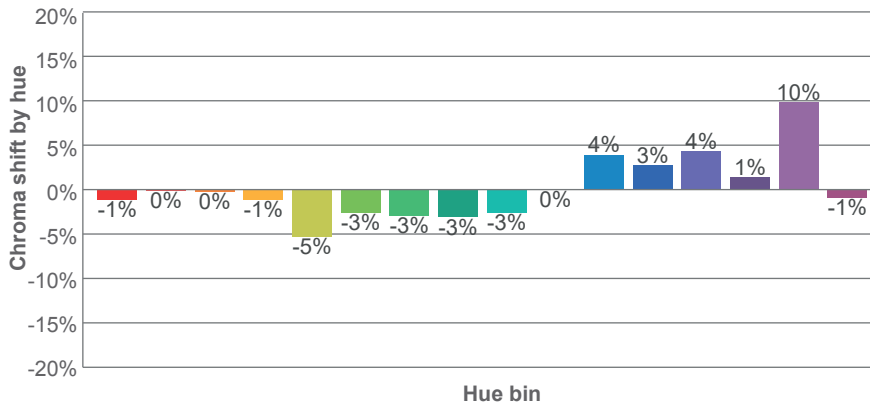
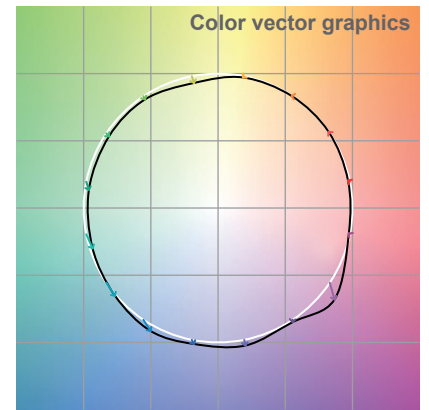
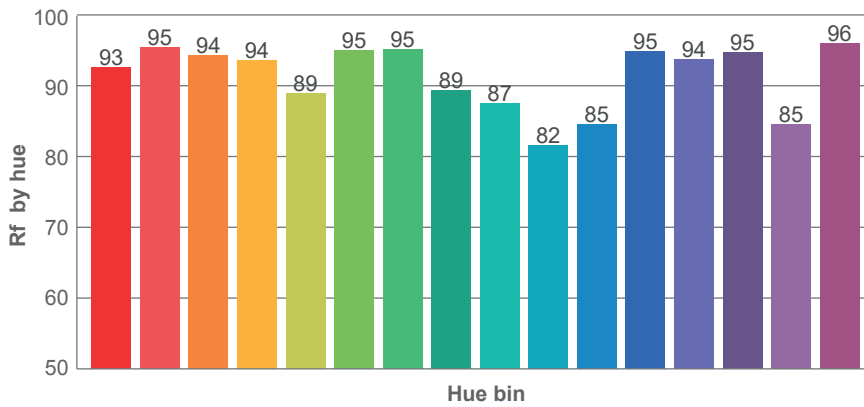
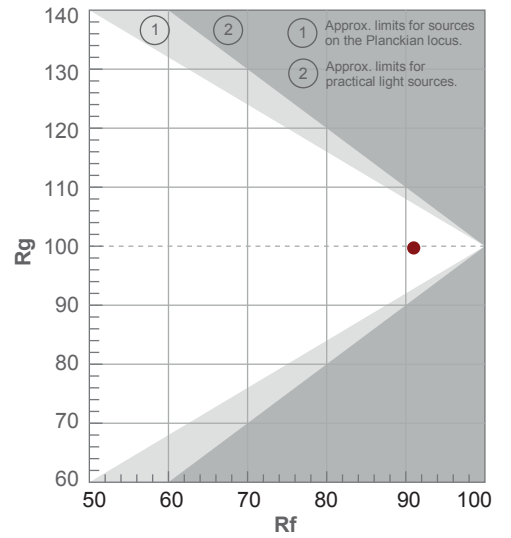
Color temperature	Color rendering index	Red component	Color fidelity	Color gamut	Color quality scale	Color coordinate cie 1931	Color coordinate cie 1931	Color coordinate	Color coordinate	Color deviation from black body
CCT	CRI	CRI R9	TM30 Rf	TM30 Rg	CQS	x	y	u	v	$\Delta uv$
6425 K	96.3	96.6	91.0	99.7	92.2	0.315	0.322	0.202	0.310	-0.0051

# TM-30 DETAILS

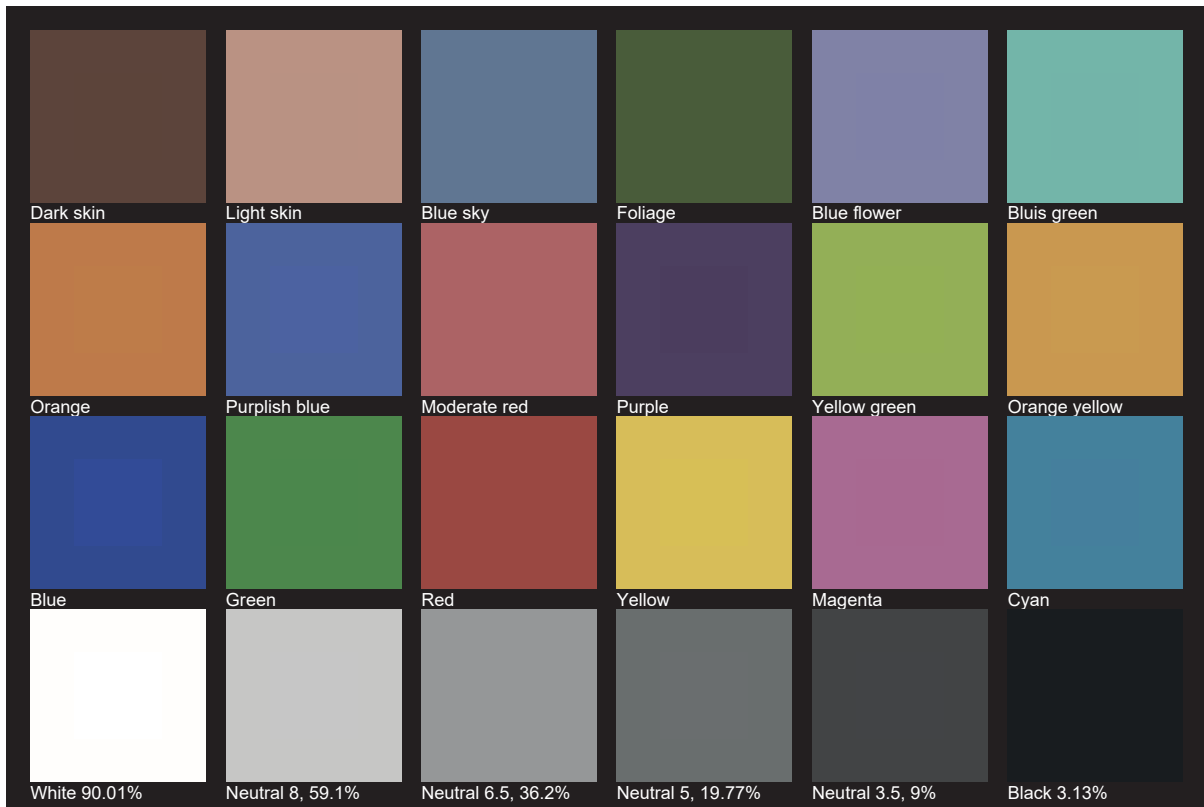
**Rf 91.0**  
Fidelity index Rf

**Rg 99.7**  
Gamut index Rg

Hue Bin	R <sub>f</sub>	Shifts (%)	
		Chroma	Hue
1	93	-1%	1%
2	95	0%	1%
3	94	0%	1%
4	94	-1%	1%
5	89	-5%	-1%
6	95	-3%	0%
7	95	-3%	1%
8	89	-3%	5%
9	87	-3%	11%
10	82	0%	12%
11	85	4%	9%
12	95	3%	2%
13	94	4%	0%
14	95	1%	-1%
15	85	10%	-8%
16	96	-1%	1%



# TLCI 96







**AYRTON**

Digital Lighting