



DOMINO LT

PHOTOMETRY



AYRTON

Digital Lighting



Total Flux	52,776 lm (@zoom 128, integrating sphere measurement, Fan mode stage)
-------------------	---

CCT @LED engin	8200 K (±500 K)
-----------------------	-----------------

CCT @open	6700 K (±500 K)
------------------	-----------------

Ra @open	70 (±2)
-----------------	---------

Ra max	85 (±2, CTP at 70%)
---------------	---------------------

TLCI	48
-------------	----

TM-30	Rf: 71.8 Rg: 92.4
--------------	-------------------

Fan Mode	Noise Level (dBA)	by Goniometer (lm)	by Sphere (lm)
Auto	48	39,213	51,112
Stage	54	40,256	52,776
Silence	42	25,900	35,260
Super Silence	38	19,677	25,211

Note: noise measured @1m distance, static status, ambient 31 dBA.

Voltage / Power	100-240V, 50-60Hz	1600 W
------------------------	-------------------	--------

Fixture Dimension / Weight	494 x 867x 280 mm	60 kg
-----------------------------------	-------------------	-------

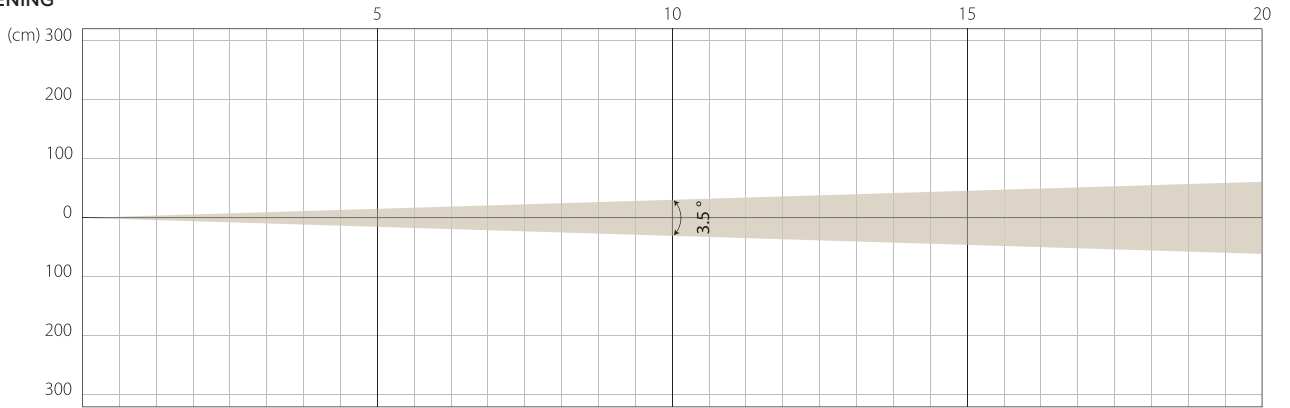
Packing Dimension / Weight	780 x 800 x 570 mm	80.5 kg
-----------------------------------	--------------------	---------

AUTO MODE

NATIVE CRI GREATER THAN 70

MIN ZOOM

BEAM OPENING

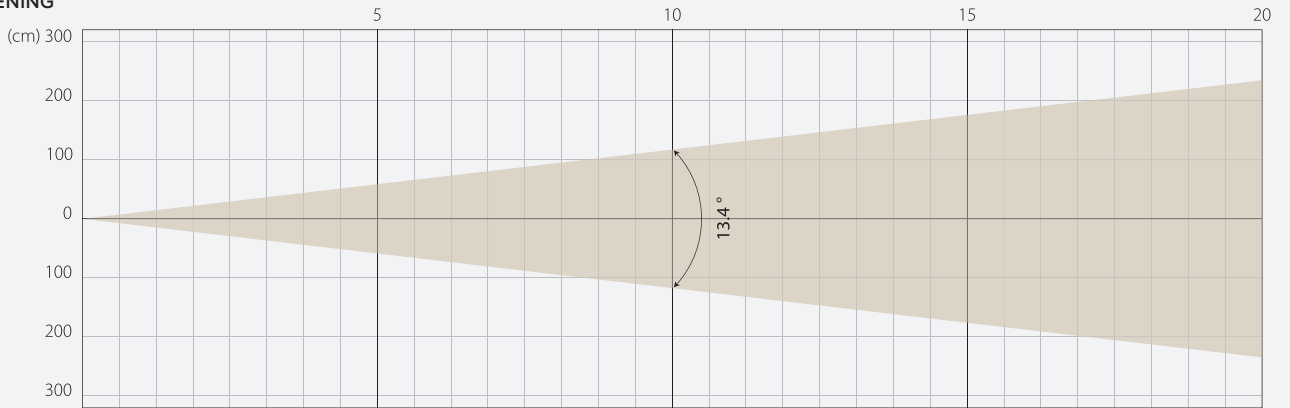


INTENSITY

Distance (m)	5		10		15		20		30		50		100	
unit	Lux	Diameter	Lux	Diameter	Lux	Diameter	Lux	Diameter	Lux	Diameter	Lux	Diameter	Lux	Diameter
White	211214	0,31	52803	0,61	23468	0,92	13201	1,22	5867	1,83	2112	3,06	528	6,11

MIDDLE ZOOM

BEAM OPENING

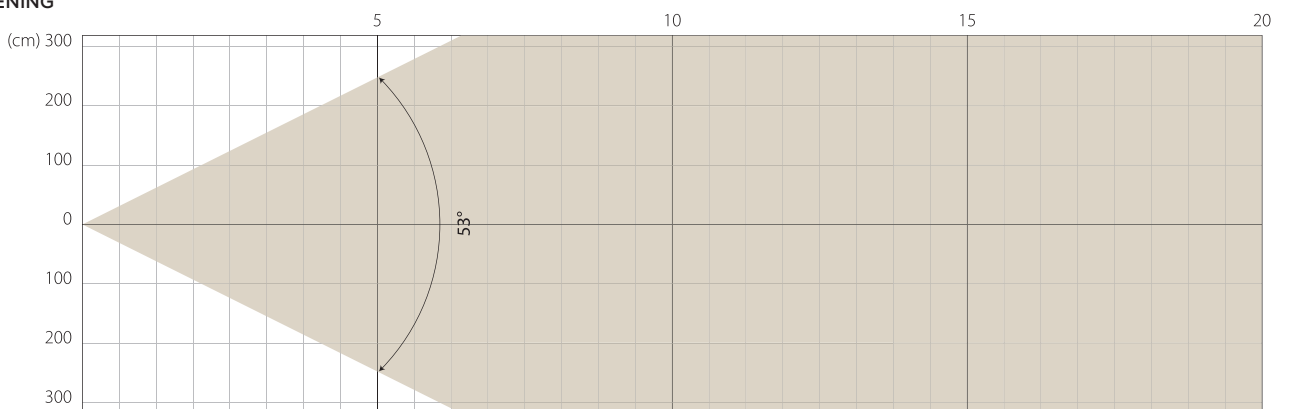


INTENSITY

Distance (m)	5		10		15		20	
unit	Lux	Diameter	Lux	Diameter	Lux	Diameter	Lux	Diameter
White	38391	1,17	9598	2,35	4266	3,52	2399	4,7

MAX ZOOM

BEAM OPENING



INTENSITY

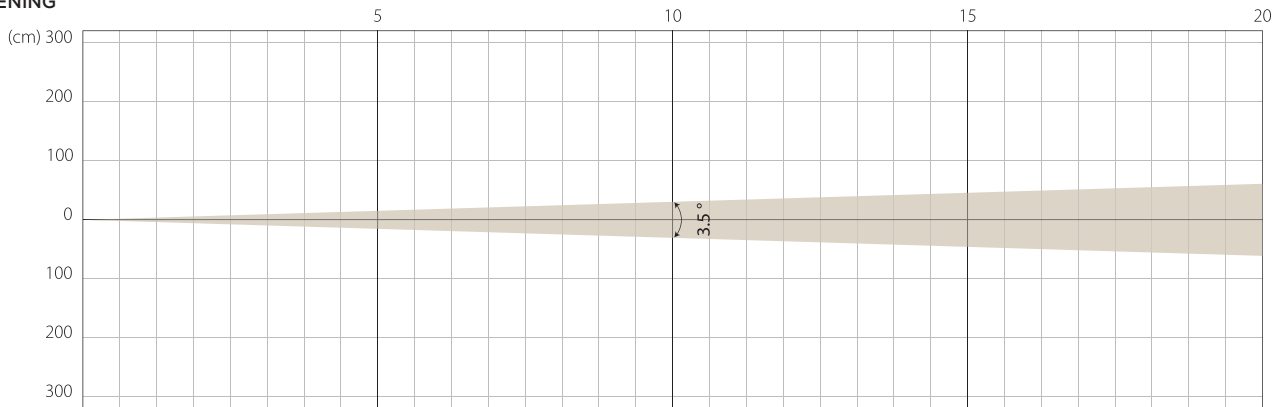
Distance (m)	5		10		15		20	
unit	Lux	Diameter	Lux	Diameter	Lux	Diameter	Lux	Diameter
White	4640	4,99	1160	9,97	516	14,96	290	19,94

STAGE MODE

NATIVE CRI GREATER THAN 70

MIN ZOOM

BEAM OPENING

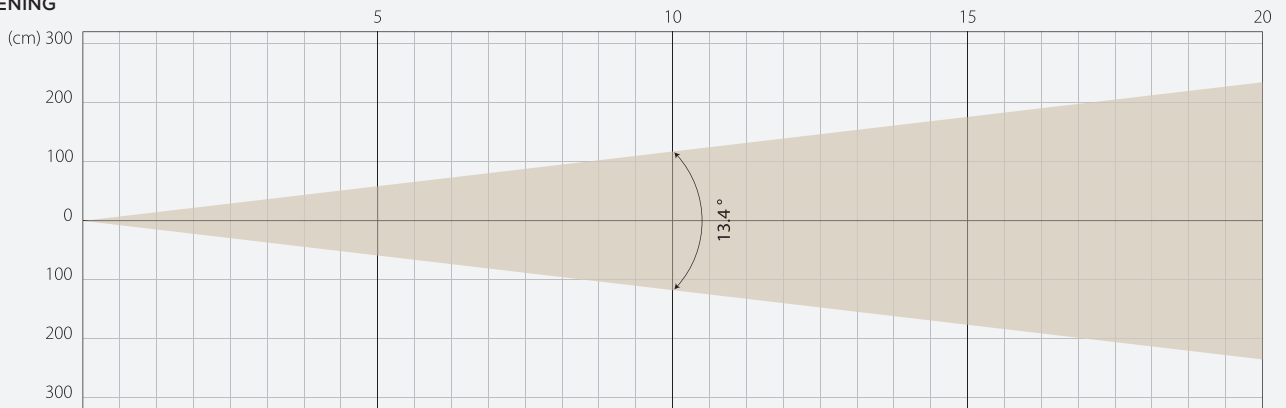


INTENSITY

Distance (m)	5		10		15		20		30		50		100	
	Lux	Diameter	Lux	Diameter	Lux	Diameter	Lux	Diameter	Lux	Diameter	Lux	Diameter	Lux	Diameter
White	219146	0,31	54787	0,61	24350	0,92	13697	1,22	6087	1,83	2191	3,06	548	6,11

MIDDLE ZOOM

BEAM OPENING

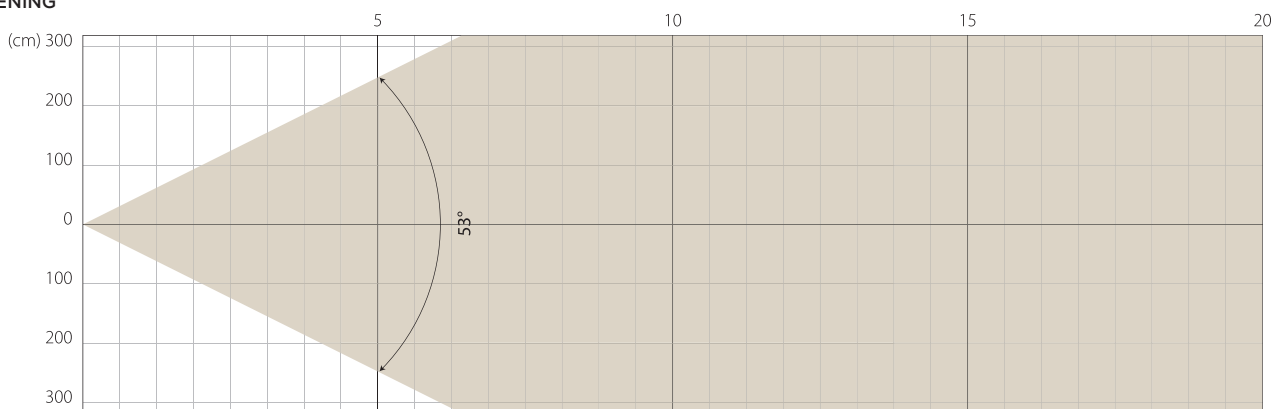


INTENSITY

Distance (m)	5		10		15		20	
	Lux	Diameter	Lux	Diameter	Lux	Diameter	Lux	Diameter
White	40157	1,17	10039	2,35	4462	3,52	2510	4,7

MAX ZOOM

BEAM OPENING



INTENSITY

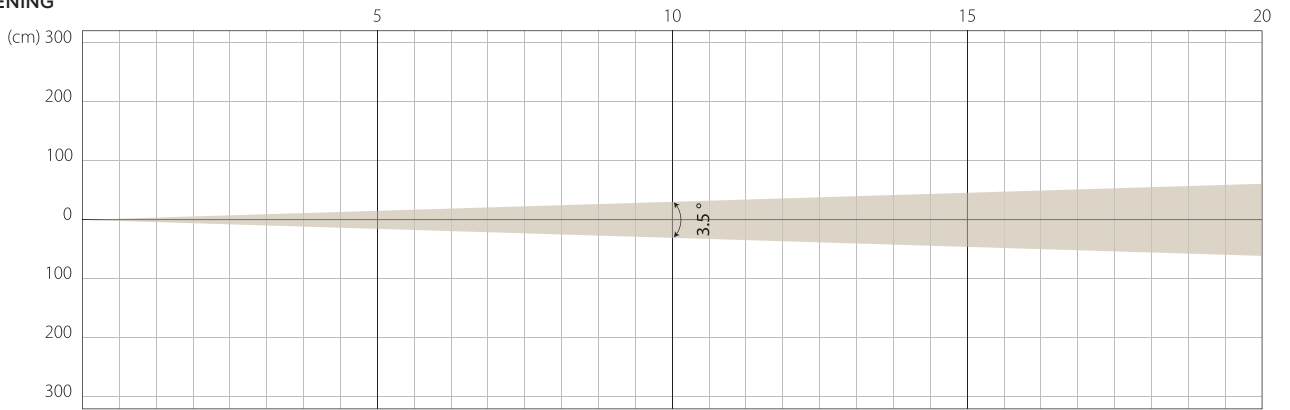
Distance (m)	5		10		15		20	
	Lux	Diameter	Lux	Diameter	Lux	Diameter	Lux	Diameter
White	4822	4,99	1205	9,97	536	14,96	301	19,94

SILENCE MODE

NATIVE CRI GREATER THAN 70

MIN ZOOM

BEAM OPENING

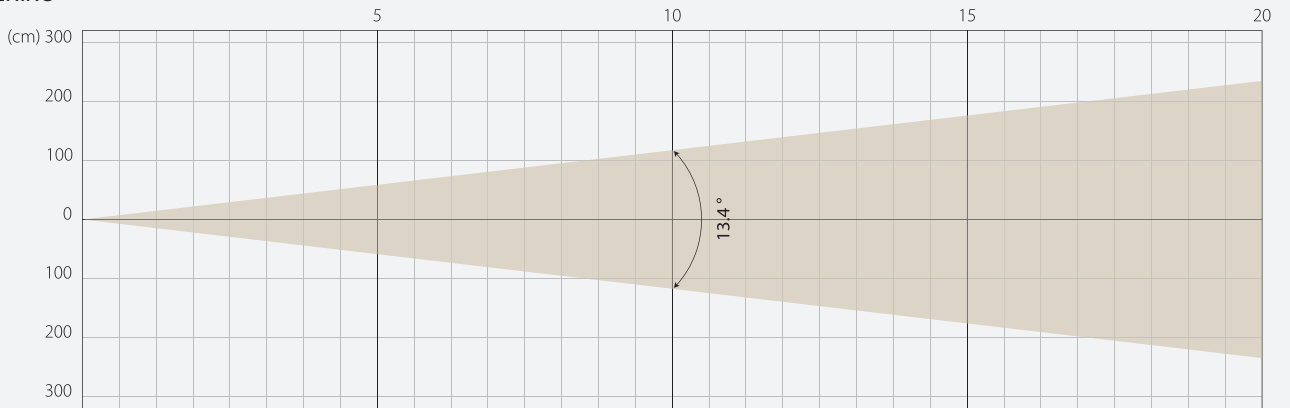


INTENSITY

Distance (m)	5		10		15		20		30		50		100	
unit	Lux	Diameter	Lux	Diameter	Lux	Diameter	Lux	Diameter	Lux	Diameter	Lux	Diameter	Lux	Diameter
White	145739	0,31	36435	0,61	16193	0,92	9109	1,22	4048	1,83	1457	3,06	364	6,11

MIDDLE ZOOM

BEAM OPENING

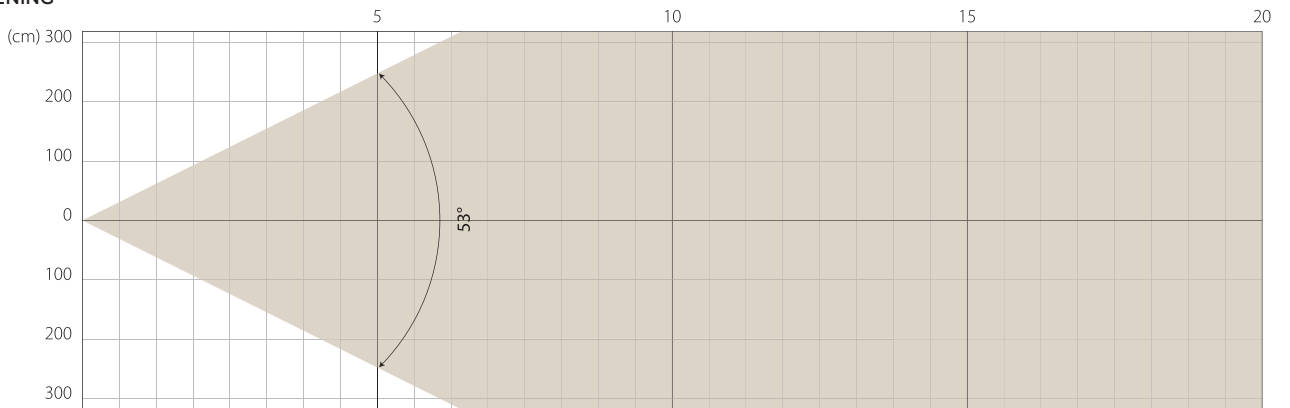


INTENSITY

Distance (m)	5		10		15		20	
unit	Lux	Diameter	Lux	Diameter	Lux	Diameter	Lux	Diameter
White	25602	1,17	6400	2,35	2845	3,52	1600	4,7

MAX ZOOM

BEAM OPENING



INTENSITY

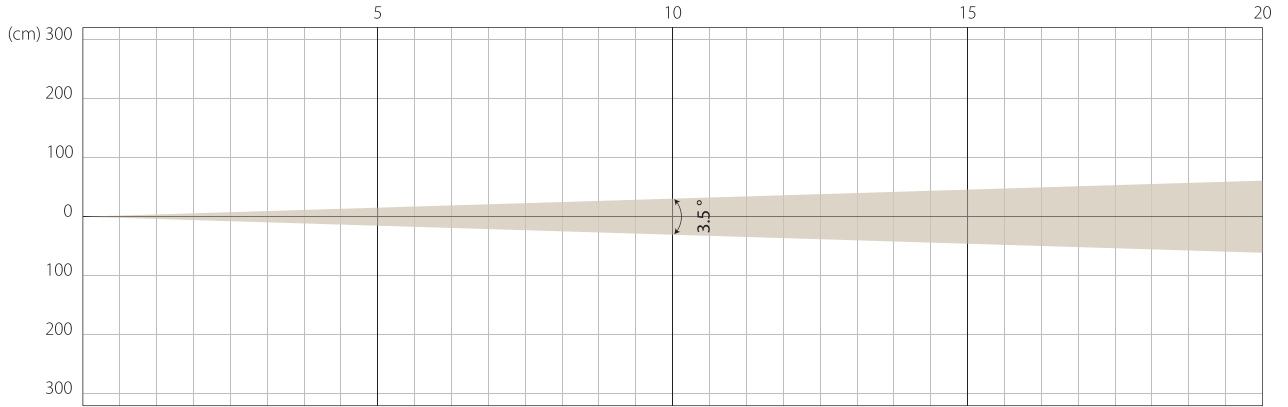
Distance (m)	5		10		15		20	
unit	Lux	Diameter	Lux	Diameter	Lux	Diameter	Lux	Diameter
White	3061	4,99	765	9,97	340	14,96	191	19,94

SUPER SILENCE MODE

NATIVE CRI GREATER THAN 70

MIN ZOOM

BEAM OPENING

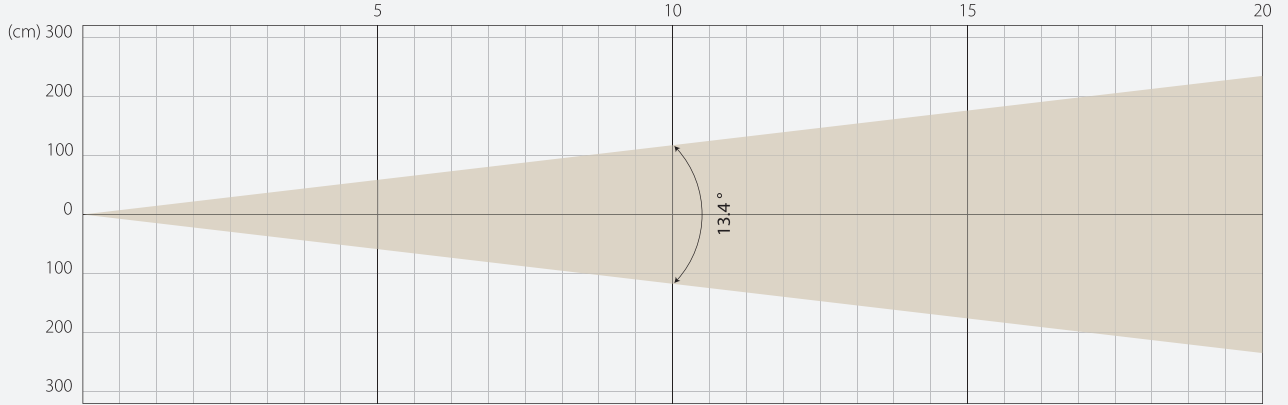


INTENSITY

Distance (m)	5		10		15		20		30		50		100	
	Lux	Diameter	Lux	Diameter	Lux	Diameter	Lux	Diameter	Lux	Diameter	Lux	Diameter	Lux	Diameter
White	109285	0,31	27321	0,61	12143	0,92	6830	1,22	3036	1,83	1093	3,06	273	6,11

MIDDLE ZOOM

BEAM OPENING

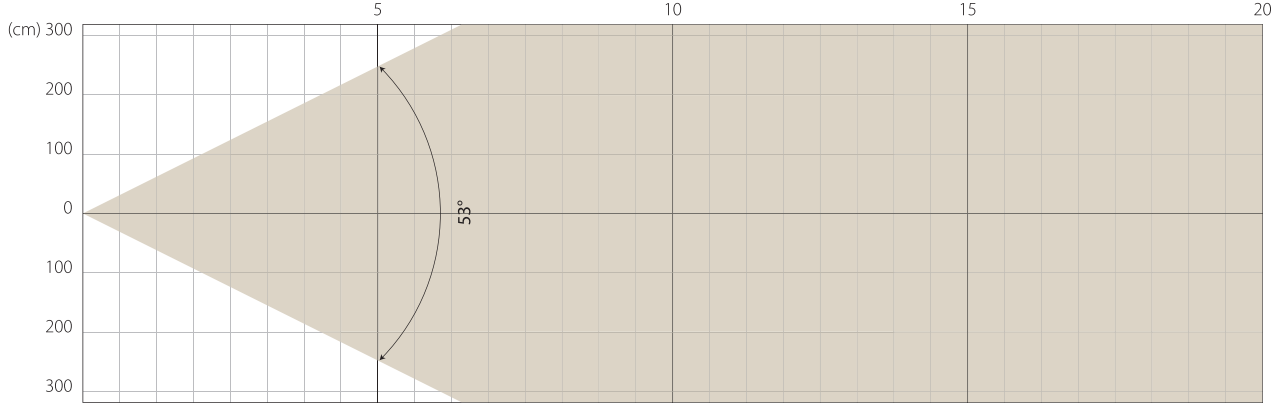


INTENSITY

Distance (m)	5		10		15		20	
	Lux	Diameter	Lux	Diameter	Lux	Diameter	Lux	Diameter
White	19449	1,17	4862	2,35	2161	3,52	1216	4,7

MAX ZOOM

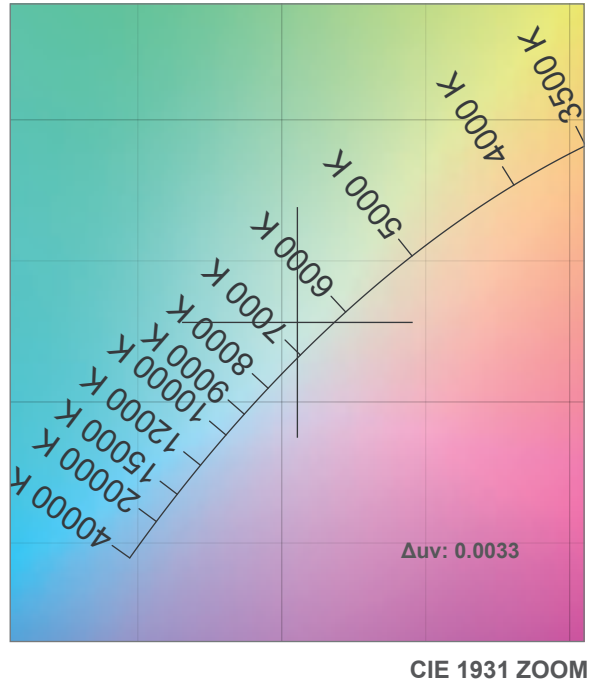
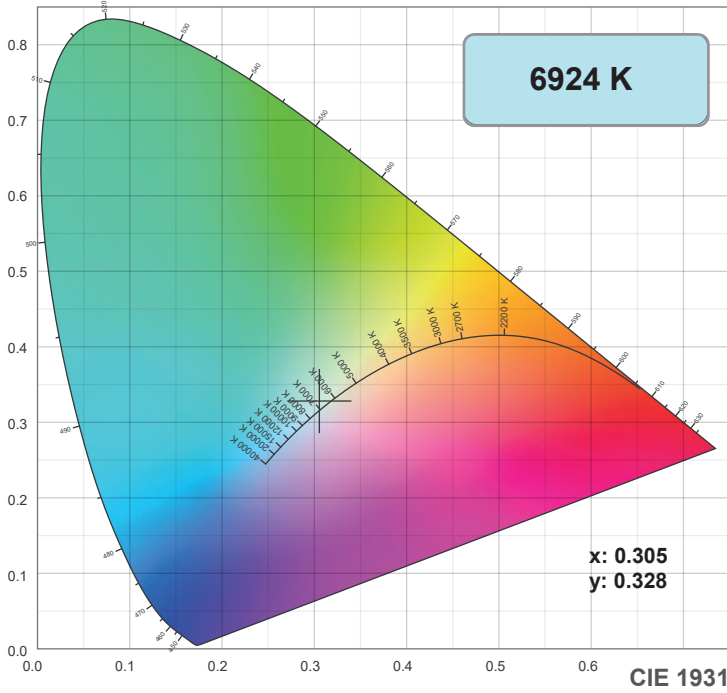
BEAM OPENING



INTENSITY

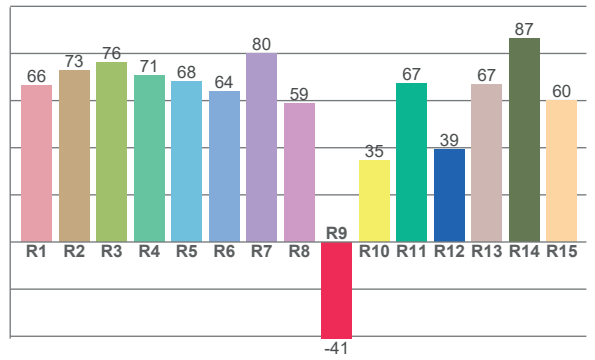
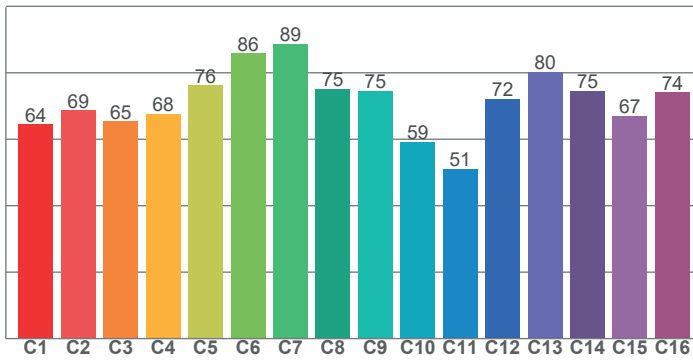
Distance (m)	5		10		15		20	
	Lux	Diameter	Lux	Diameter	Lux	Diameter	Lux	Diameter
White	2323	4,99	581	9,97	258	14,96	145	19,94

COLOR DETAILS



TM-30: 71.5

CRI: 69.6 (R1-R8)



CRI R values, only R1-R8 are used to calculate final CRI value

R1	R2	R3	R4	R5	R6	R7	R8	R9	R10	R11	R12	R13	R14	R15
66.2	72.8	76.1	70.6	68.1	64.0	80.1	58.6	-41.0	34.5	67.2	39.4	66.9	86.5	60.2

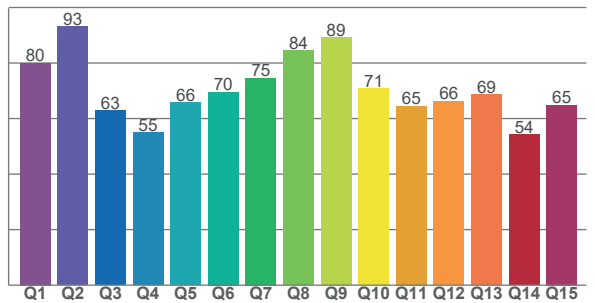
TM30 C values, 16 binned values out of total of 99 C values

C1	C2	C3	C4	C5	C6	C7	C8	C9	C10	C11	C12	C13	C14	C15	C16
64.4	68.7	65.3	67.7	76.2	85.8	88.7	75.1	74.6	59.3	51.2	72.1	80.2	74.6	67.1	74.0

CQS Q values

Q1	Q2	Q3	Q4	Q5	Q6	Q7	Q8	Q9	Q10	Q11	Q12	Q13	Q14	Q15
80.0	93.2	62.9	55.0	65.7	69.5	74.6	84.5	89.1	70.7	64.5	66.3	68.7	54.2	64.8

CQS: 68.9



Color parameters

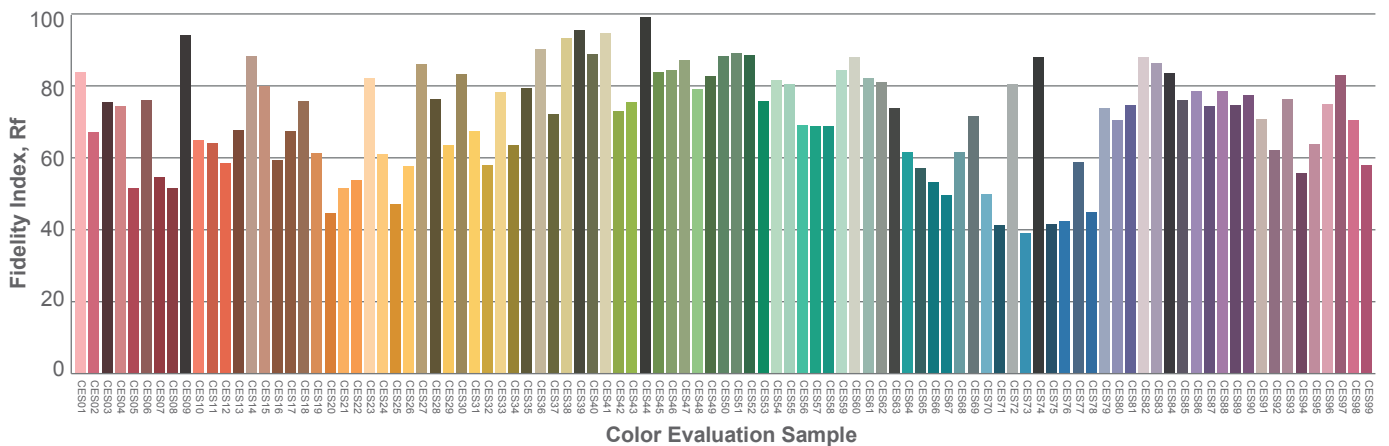
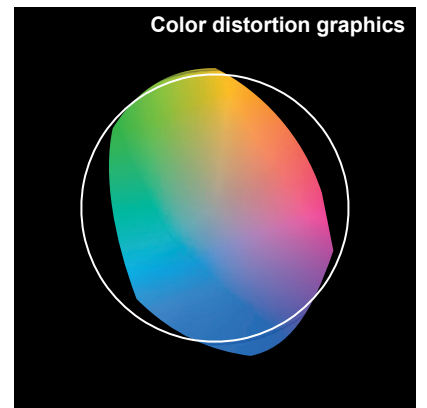
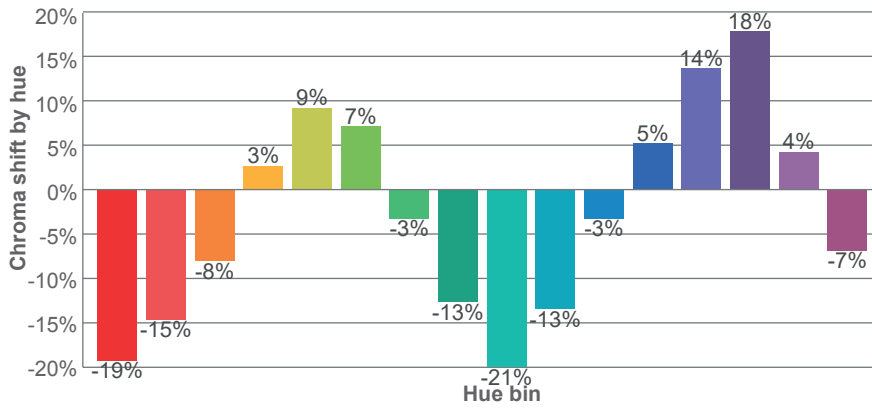
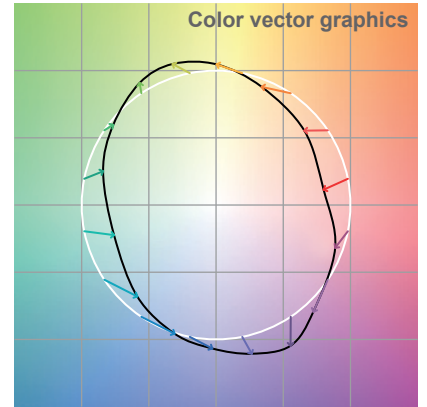
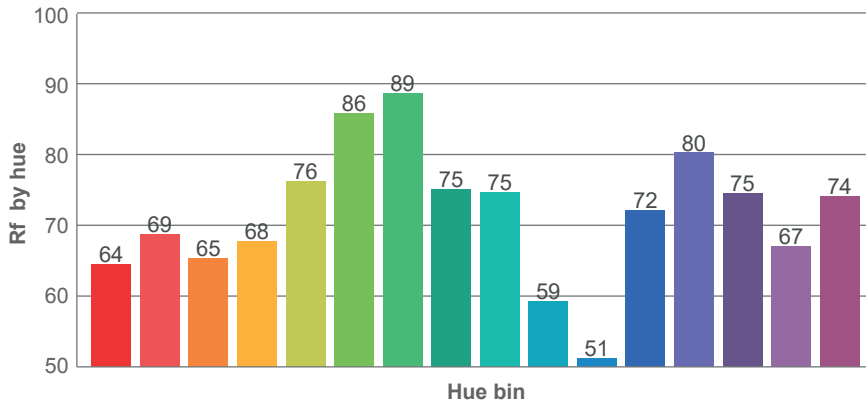
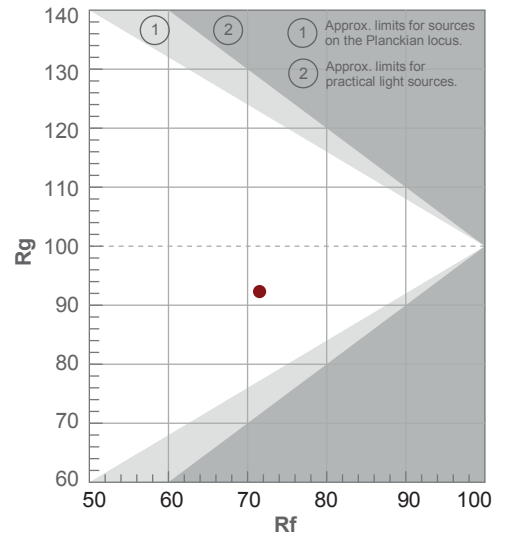
Color temperature	Color rendering index	Red component	Color fidelity	Color gamut	Color quality scale	Color coordinate cie 1931	Color coordinate cie 1931	Color coordinate	Color coordinate	Color deviation from black body
CCT	CRI	CRI R9	TM30 Rf	TM30 Rg	CQS	x	y	u	v	Δuv
6924 K	69.6	-41.0	71.5	92.3	68.9	0.305	0.328	0.193	0.311	0.0033

TM-30 DETAILS

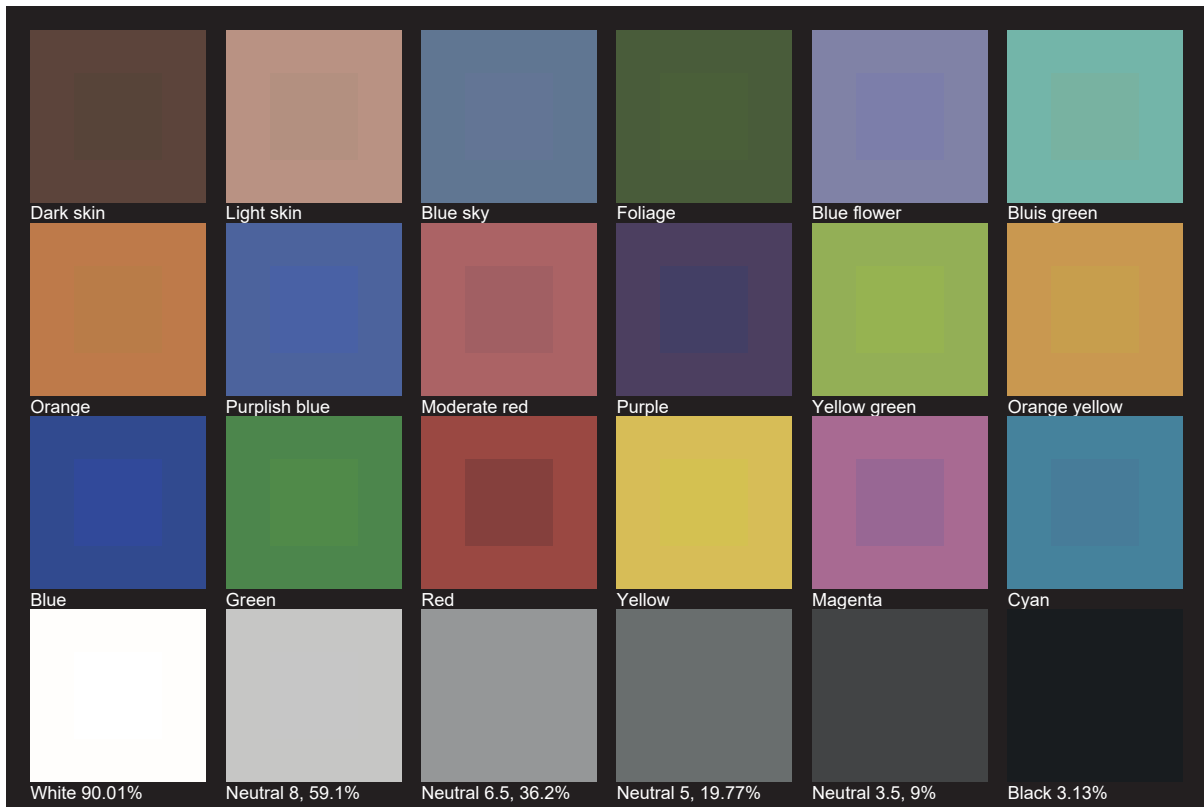
Rf 71.5
Fidelity index Rf

Rg 92.3
Gamut index Rg

Hue Bin	R _f	Shifts (%)	
		Chroma	Hue
1	64	-19%	-4%
2	69	-15%	10%
3	65	-8%	21%
4	68	3%	20%
5	76	9%	11%
6	86	7%	-3%
7	89	-3%	-7%
8	75	-13%	-8%
9	75	-21%	7%
10	59	-13%	24%
11	51	-3%	28%
12	72	5%	18%
13	80	14%	4%
14	75	18%	-12%
15	67	4%	-26%
16	74	-7%	-14%



TLCI 48





AYRTON

Digital Lighting