



EURUS PROFILE S

PHOTOMETRY



AYRTON
Digital Lighting



Total Flux	37451 lm (@zoom 128, integrating sphere measurement, Fan mode auto)
-------------------	---

CCT @LED engine	8200 (±500K)
CCT @open	6700 (±500K)
Ra @open	70 (±2)
TLCI	47
TM-30	Rf: 71.4 Rg: 91.8

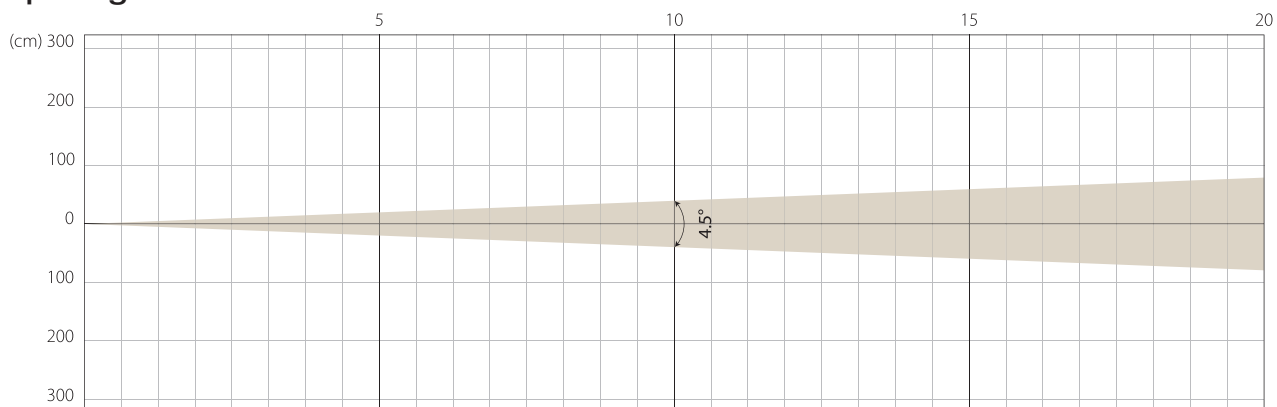
Fan Mode	Noise Level (dBA)	by Goniometer (lm)	by Sphere (lm)
Auto	45,6	25163	36819
Stage	49,5	24568	37451
Silence	39,7	18043	25821
Super Silence	34,3	10937	15191

Note: noise measured @1m distance, static status, ambient 31 dBA.

Voltage / Power	100-240V, 50-60Hz	1000 W
Fixture Dimension / Weight	445 x 743 x 273 mm	32.9 kg
Packing Dimension / Weight	660 x 675 x 560 mm	50.5 kg

MIN ZOOM

Beam Opening

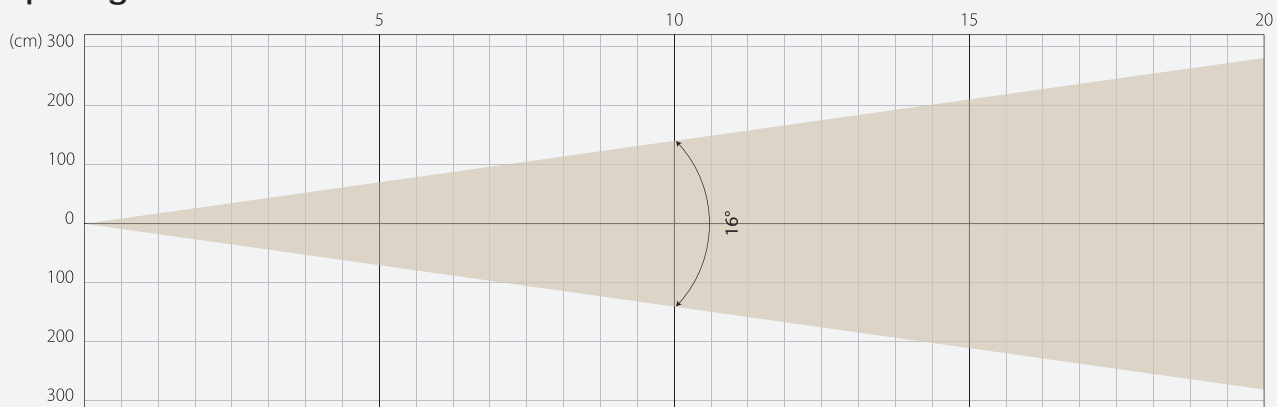


Intensity

Distance (m)	5		10		15		20	
unit	lux	diameter	lux	diameter	lux	diameter	lux	diameter
White	115035	0,39	28759	0,79	12782	1,18	7190	1,57

MIDDLE ZOOM

Beam Opening

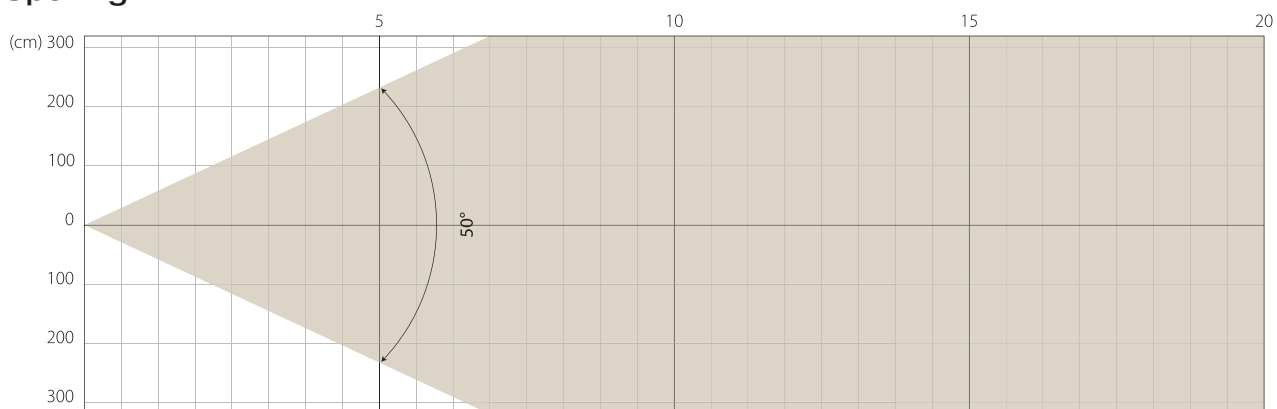


Intensity

Distance (m)	5		10		15		20	
unit	lux	diameter	lux	diameter	lux	diameter	lux	diameter
White	19946	1,41	4986	2,81	2216	4,22	1247	5,62

MAX ZOOM

Beam Opening



Intensity

Distance (m)	5		10		15		20	
unit	lux	diameter	lux	diameter	lux	diameter	lux	diameter
White	2499	4,66	625	9,33	278	13,99	156	18,65

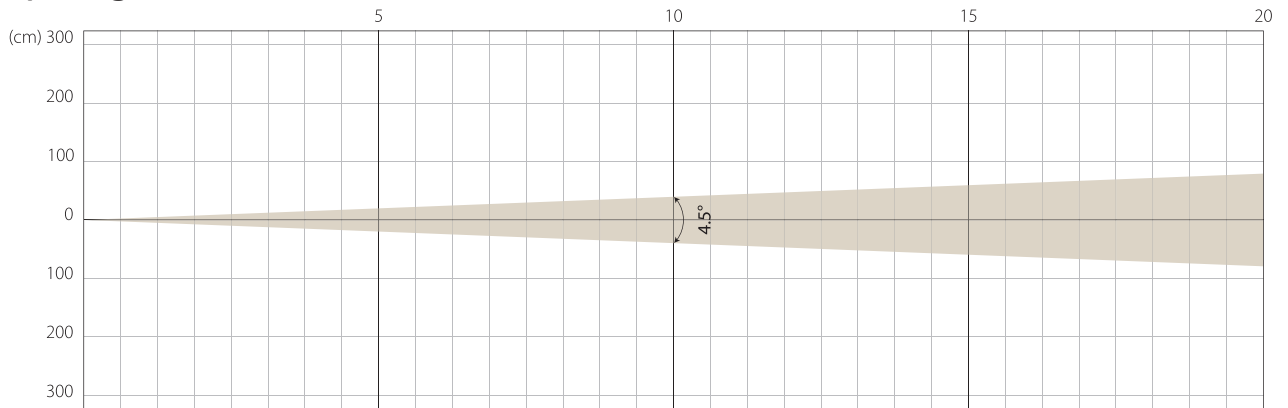
Note: Measurement done with Goniometer

STAGE MODE

NATIVE CRI GREATER THAN 70

MIN ZOOM

Beam Opening

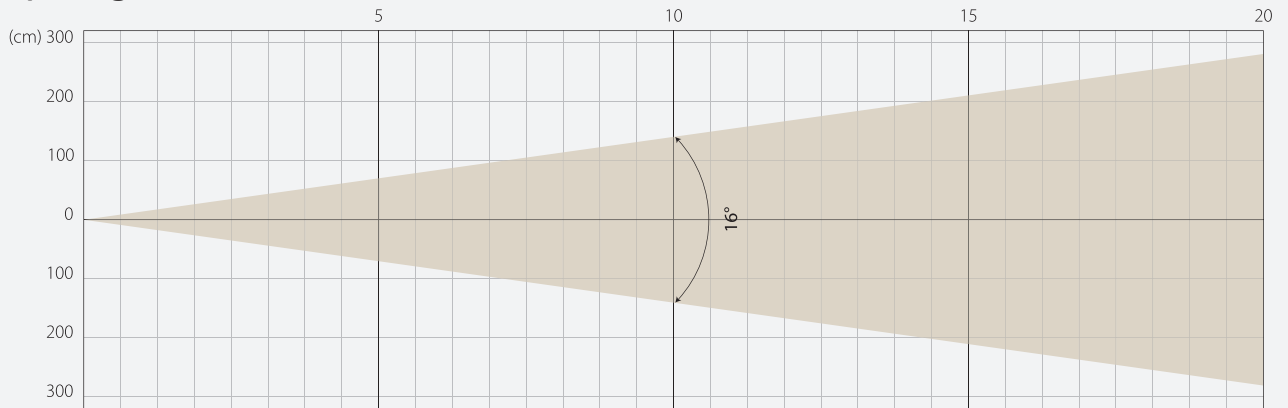


Intensity

Distance (m)	5		10		15		20	
unit	lux	diameter	lux	diameter	lux	diameter	lux	diameter
White	122620	0,39	30655	0,79	13624	1,18	7664	1,57

MIDDLE ZOOM

Beam Opening

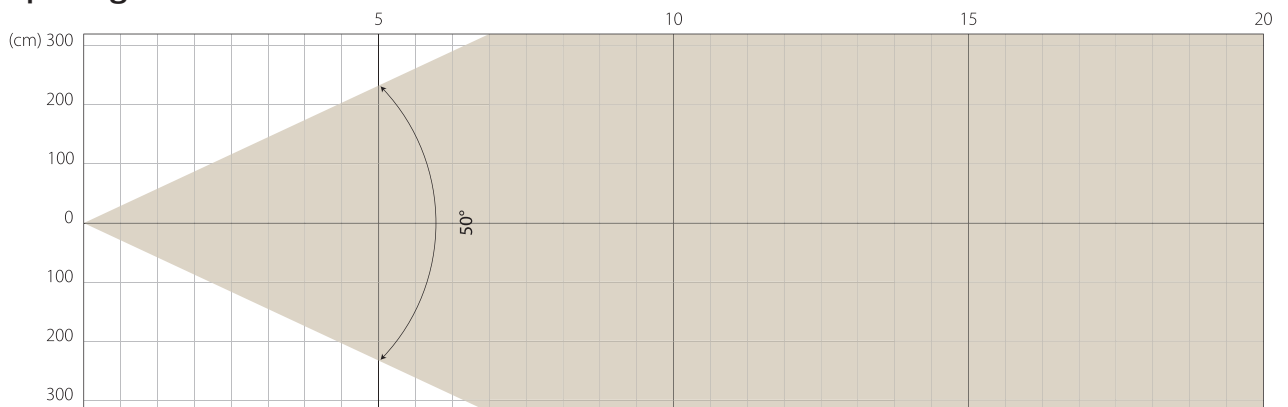


Intensity

Distance (m)	5		10		15		20	
unit	lux	diameter	lux	diameter	lux	diameter	lux	diameter
White	20021	1,41	5005	2,81	2225	4,22	1251	5,62

MAX ZOOM

Beam Opening



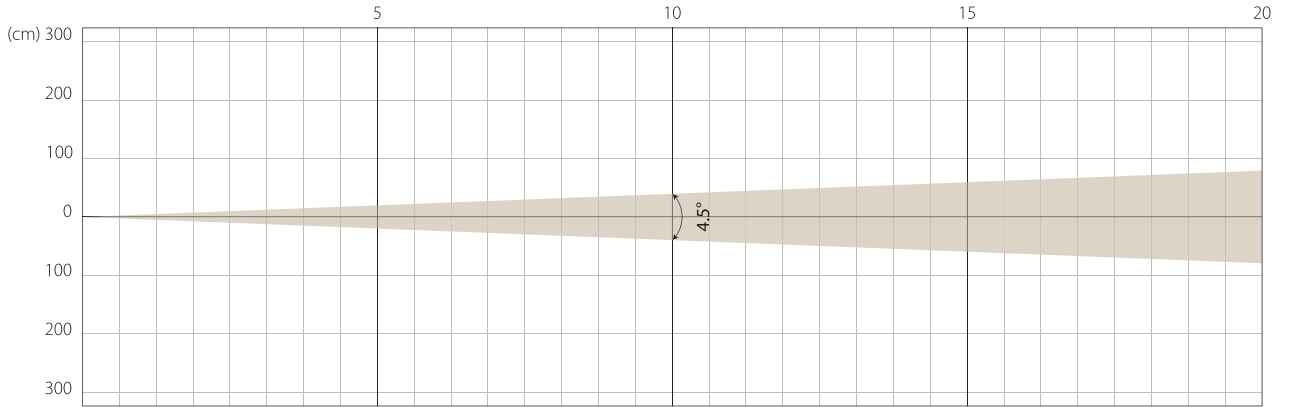
Intensity

Distance (m)	5		10		15		20	
unit	lux	diameter	lux	diameter	lux	diameter	lux	diameter
White	2550	4,66	637	9,33	283	13,99	159	18,65

Note: Measurement done with Goniometer

MIN ZOOM

Beam Opening

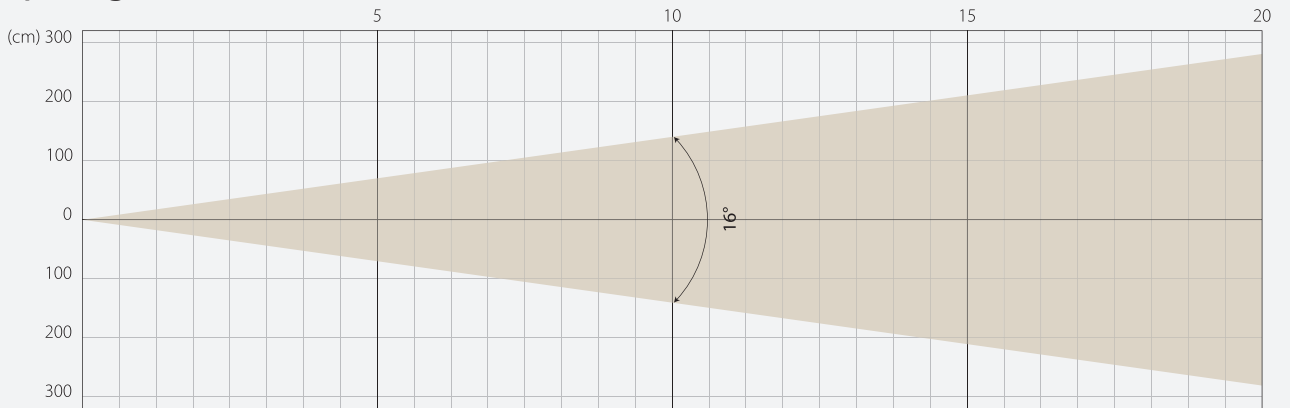


Intensity

Distance (m)	5		10		15		20	
unit	lux	diameter	lux	diameter	lux	diameter	lux	diameter
White	81180	0,39	20295	0,79	9020	1,18	5074	1,57

MIDDLE ZOOM

Beam Opening

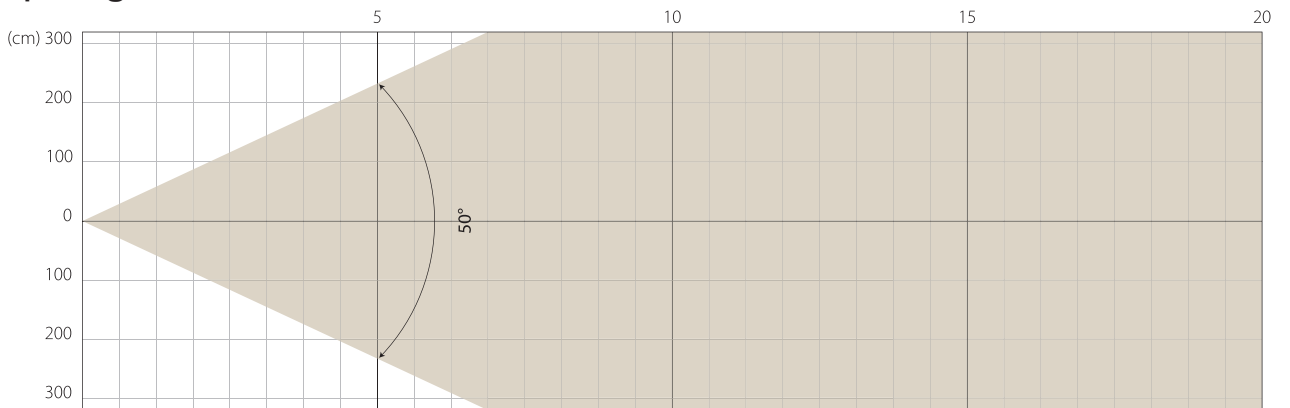


Intensity

Distance (m)	5		10		15		20	
unit	lux	diameter	lux	diameter	lux	diameter	lux	diameter
White	14209	1,41	3552	2,81	1579	4,22	888	5,62

MAX ZOOM

Beam Opening



Intensity

Distance (m)	5		10		15		20	
unit	lux	diameter	lux	diameter	lux	diameter	lux	diameter
White	1778	4,66	444	9,33	198	13,99	111	18,65

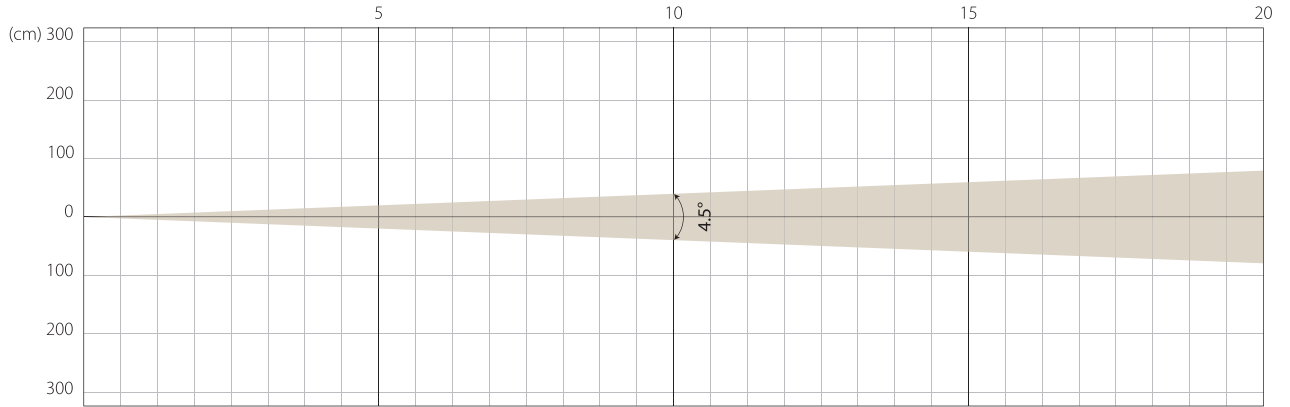
Note: Measurement done with Goniometer

SUPER SILENCE MODE

NATIVE CRI GREATER THAN 70

MIN ZOOM

Beam Opening

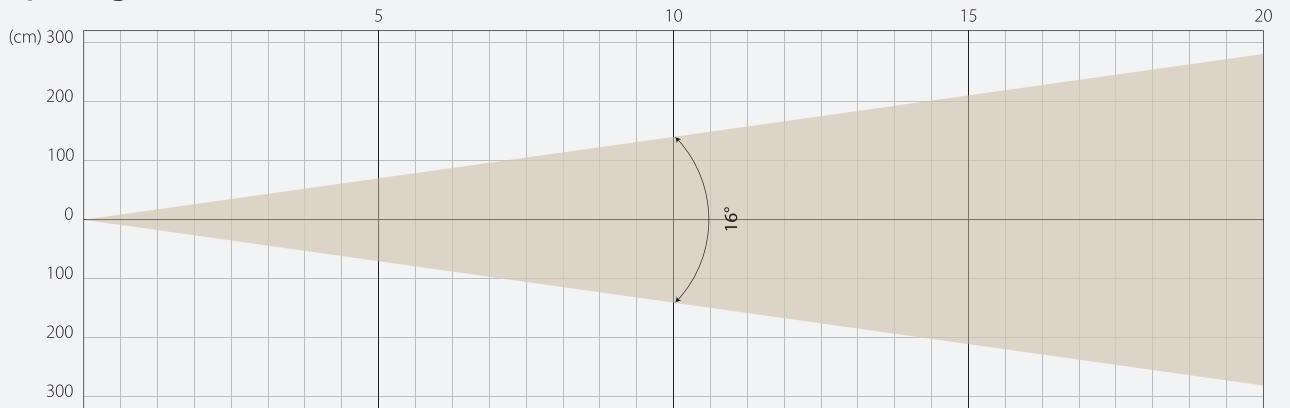


Intensity

Distance (m)	5		10		15		20	
unit	lux	diameter	lux	diameter	lux	diameter	lux	diameter
White	55578	0,39	13894	0,79	6175	1,18	3474	1,57

MIDDLE ZOOM

Beam Opening

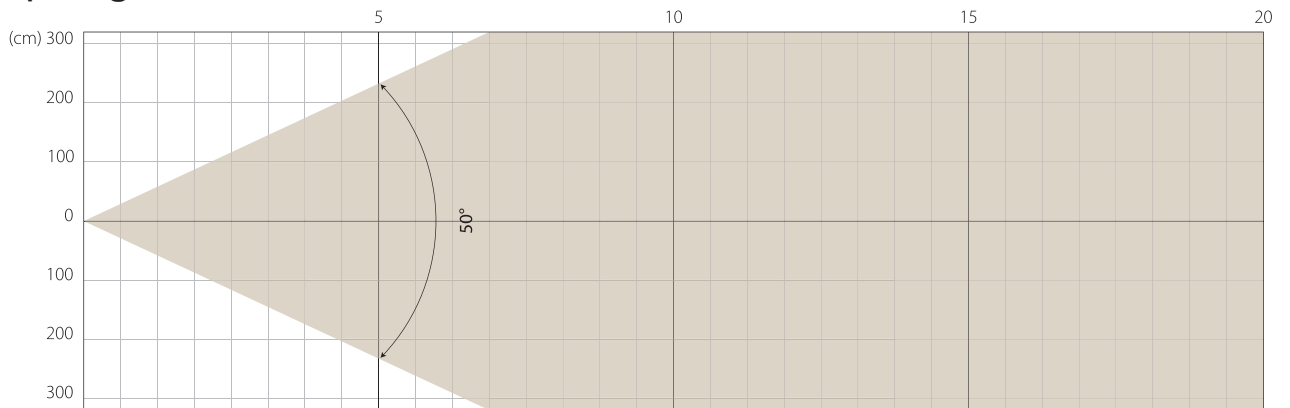


Intensity

Distance (m)	5		10		15		20	
unit	lux	diameter	lux	diameter	lux	diameter	lux	diameter
White	8868	1,41	2217	2,81	985	4,22	554	5,62

MAX ZOOM

Beam Opening

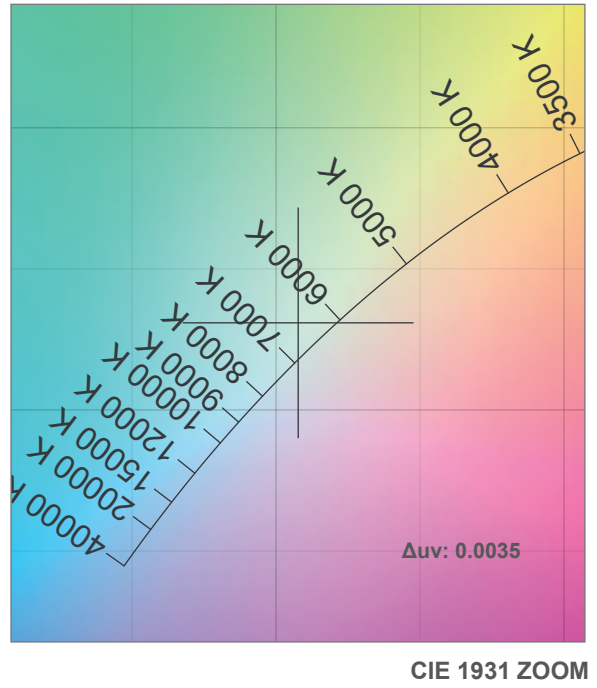
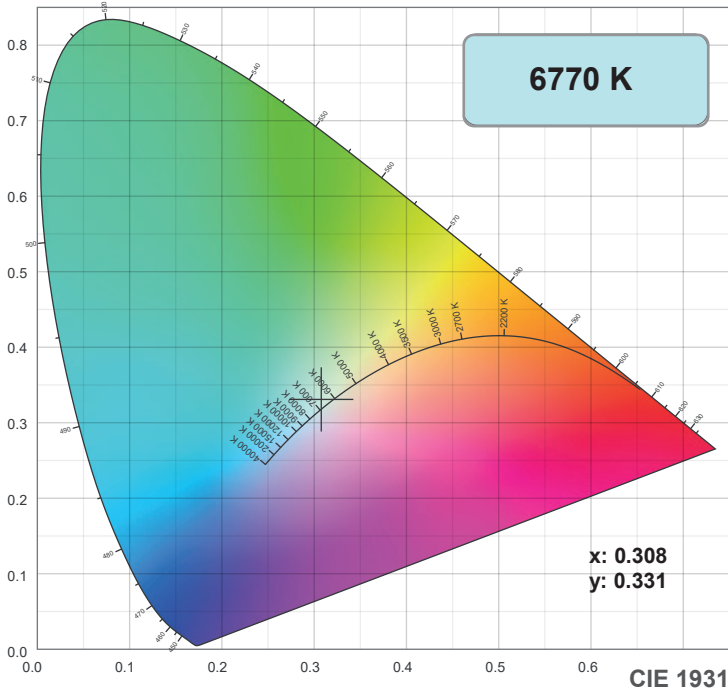


Intensity

Distance (m)	5		10		15		20	
unit	lux	diameter	lux	diameter	lux	diameter	lux	diameter
White	1143	4,66	286	9,33	127	13,99	71	18,65

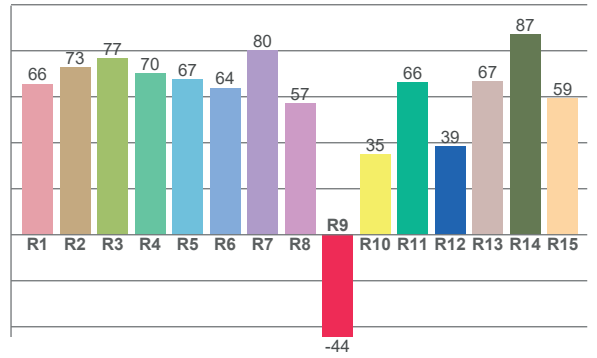
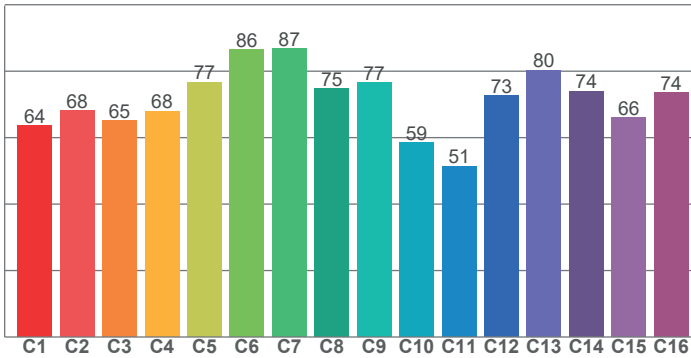
Note: Measurement done with Goniometer

COLOR DETAILS



TM-30: 71.4

CRI: 69.3 (R1-R8)



CRI R values, only R1-R8 are used to calculate final CRI value

R1	R2	R3	R4	R5	R6	R7	R8	R9	R10	R11	R12	R13	R14	R15
65.6	72.9	76.8	70.1	67.5	63.9	80.2	57.3	-44.5	34.9	66.3	38.6	66.6	87.0	59.3

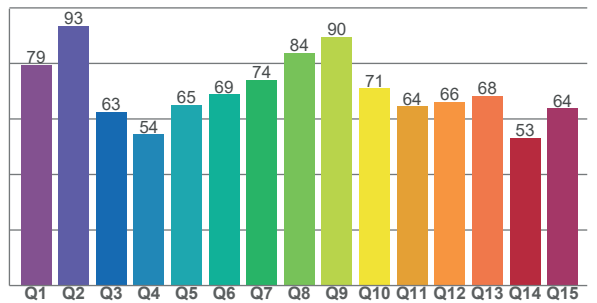
TM30 C values, 16 binned values out of total of 99 C values

C1	C2	C3	C4	C5	C6	C7	C8	C9	C10	C11	C12	C13	C14	C15	C16
63.5	68.2	65.1	68.0	76.7	86.5	86.9	74.8	76.6	58.6	51.5	72.7	80.4	74.0	66.1	73.7

CQS Q values

Q1	Q2	Q3	Q4	Q5	Q6	Q7	Q8	Q9	Q10	Q11	Q12	Q13	Q14	Q15
79.4	93.5	62.6	54.4	65.0	68.8	74.0	83.9	89.6	71.0	64.5	66.0	68.2	53.1	63.8

CQS: 68.4



Color parameters

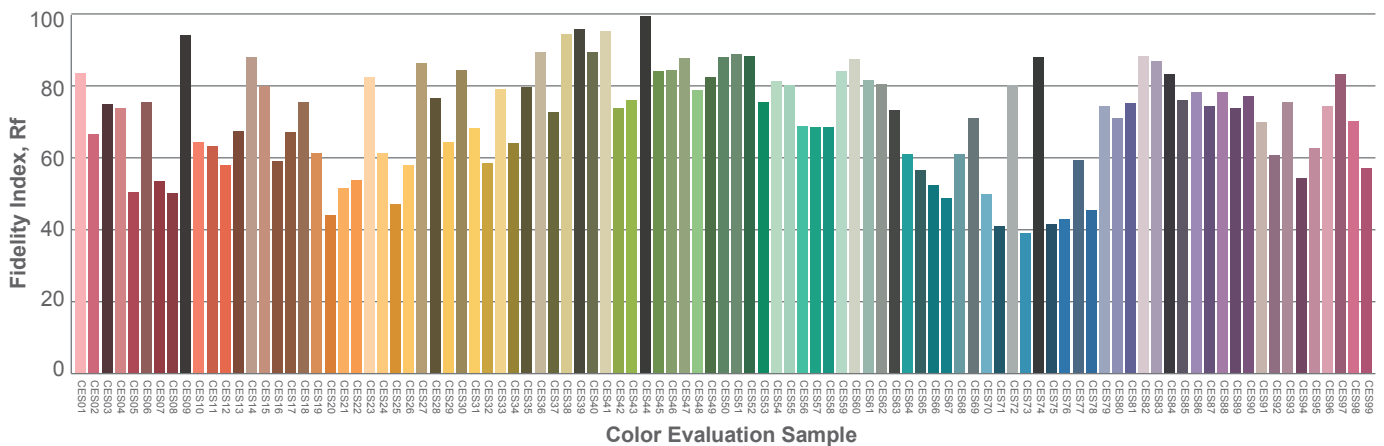
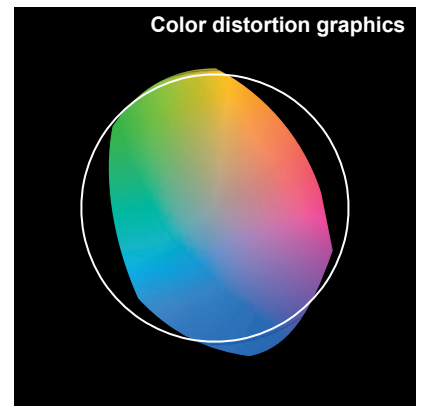
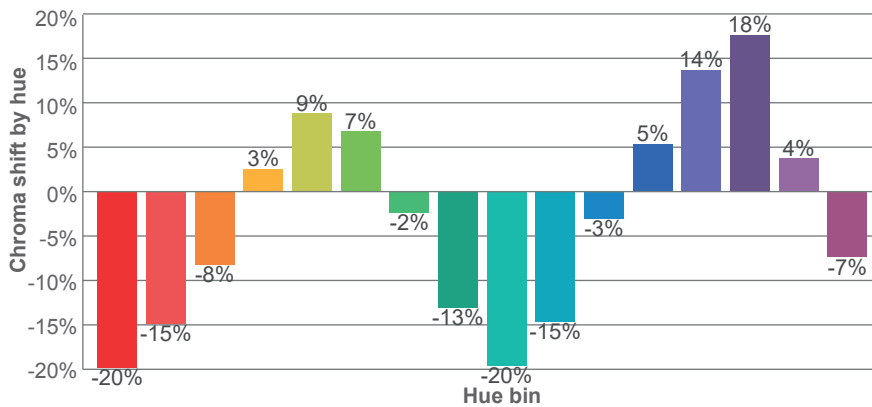
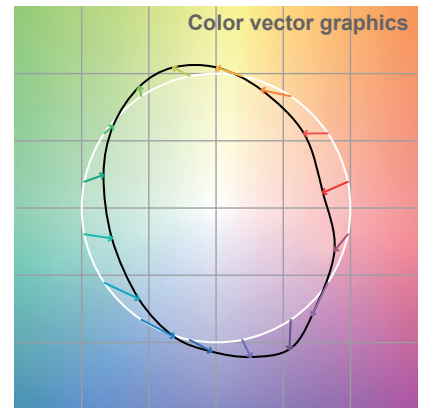
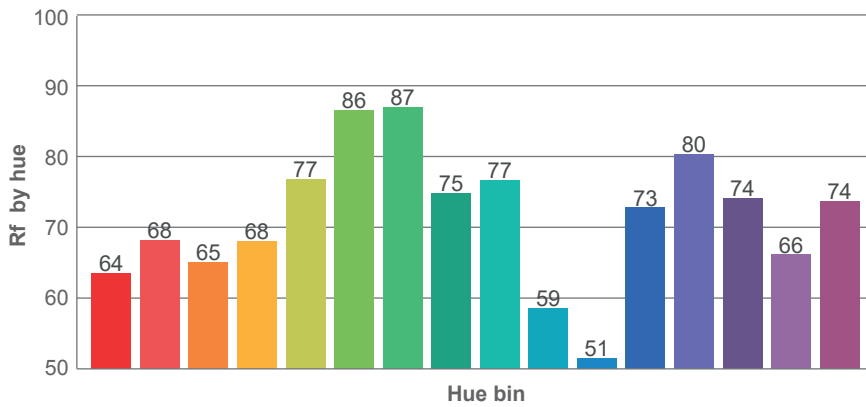
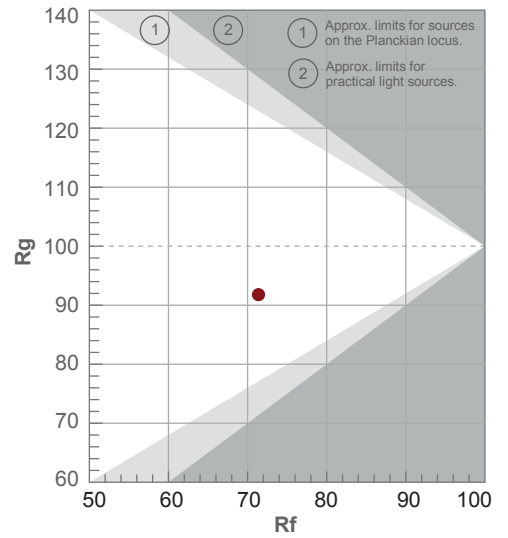
Color temperature	Color rendering index	Red component	Color fidelity	Color gamut	Color quality scale	Color coordinate cie 1931	Color coordinate cie 1931	Color coordinate	Color coordinate	Color deviation from black body
CCT	CRI	CRI R9	TM30 Rf	TM30 Rg	CQS	x	y	u	v	Δuv
6770 K	69.3	-44.5	71.4	91.8	68.4	0.308	0.331	0.194	0.312	0.0035

TM-30 DETAILS

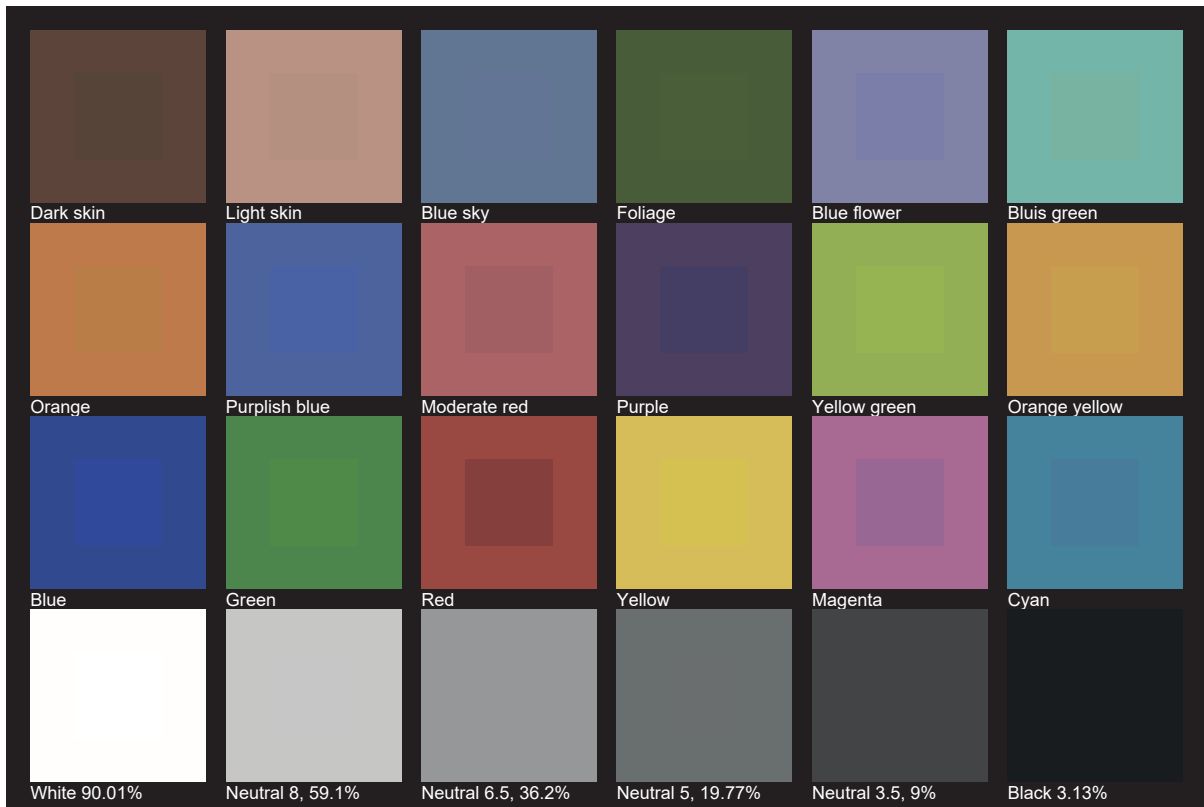
Rf 71.4
Fidelity index Rf

Rg 91.8
Gamut index Rg

Hue Bin	R _f	Shifts (%)	
		Chroma	Hue
1	64	-20%	-4%
2	68	-15%	10%
3	65	-8%	21%
4	68	3%	20%
5	77	9%	11%
6	86	7%	-3%
7	87	-2%	-8%
8	75	-13%	-8%
9	77	-20%	7%
10	59	-15%	24%
11	51	-3%	27%
12	73	5%	17%
13	80	14%	4%
14	74	18%	-13%
15	66	4%	-27%
16	74	-7%	-14%



TLCI 47





AYRTON

Digital Lighting