



KHAM SIN S

PHOTOMETRY



AYRTON
Digital Lighting



Total Flux	40445 lm (@zoom 128, integrating sphere measurement, Fan mode auto)
-------------------	---------------------------------------------------------------------

CCT @LED engine	8000 (±500K)
CCT @open	7000 (±500K)
Ra @open	70 (±2)
TLCI	45
TM-30	Rf: 69.0 Rg: 94.2

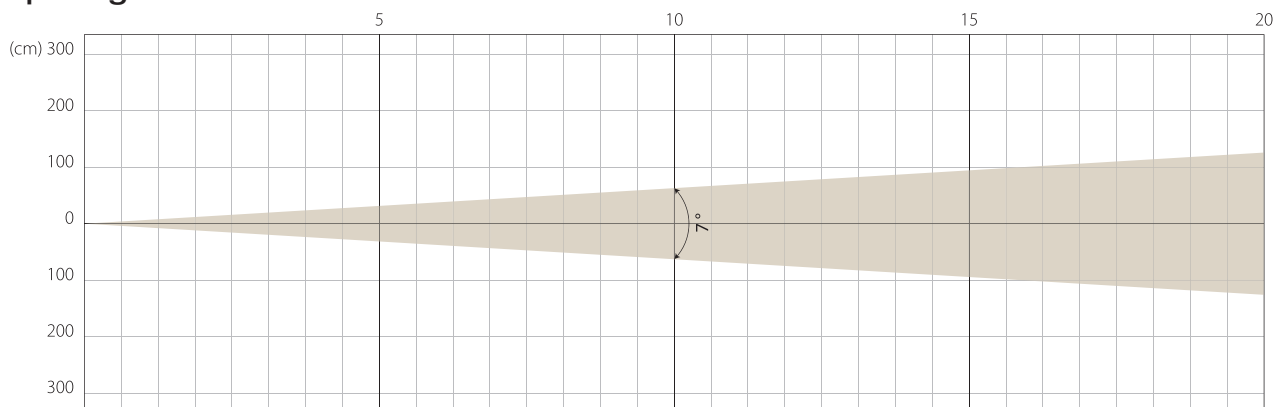
Fan Mode	Noise Level (dBA)	by Goniometer (lm)	by Sphere (lm)
Auto	42.7	32073	40024
Stage	48.3	33010	40445
Silence	35.2	22226	28977
Super Silence	33.8	14822	22354

Note: noise measured @1m distance, static status, ambient 31 dBA.

Voltage / Power	120-240V, 50-60Hz	1150 W
Fixture Dimension / Weight	494 x 778 x 280 mm	39.8 kg
Packing Dimension / Weight	660 x 675 x 560 mm	57 kg

MIN ZOOM

Beam Opening

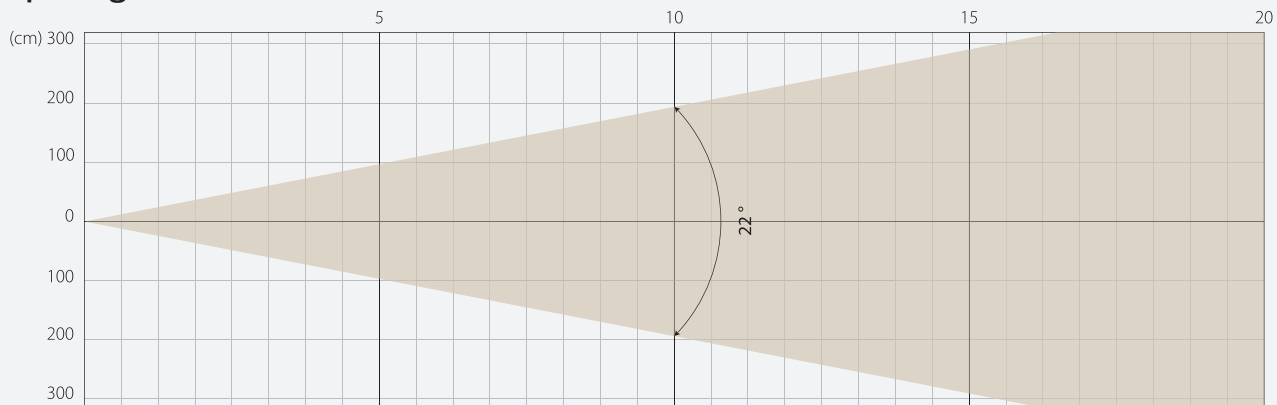


Intensity

Distance (m)	5		10		15		20	
unit	lux	diameter	lux	diameter	lux	diameter	lux	diameter
White	61042	0,61	15261	1,22	6782	1,83	3815	2,45

MIDDLE ZOOM

Beam Opening

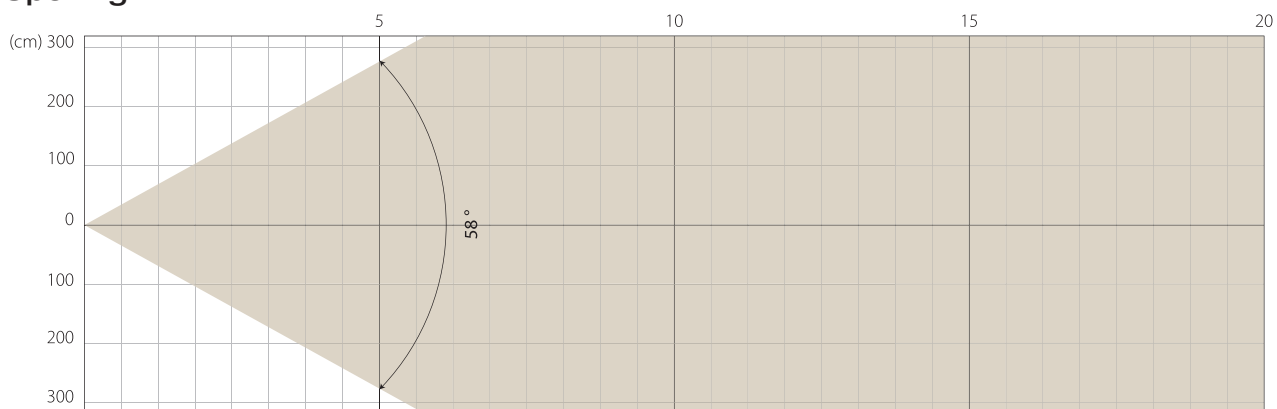


Intensity

Distance (m)	5		10		15		20	
unit	lux	diameter	lux	diameter	lux	diameter	lux	diameter
White	14132	1,94	3533	3,89	1570	5,83	883	7,78

MAX ZOOM

Beam Opening



Intensity

Distance (m)	5		10		15		20	
unit	lux	diameter	lux	diameter	lux	diameter	lux	diameter
White	2418	5,54	604	11,09	269	16,63	151	22,17

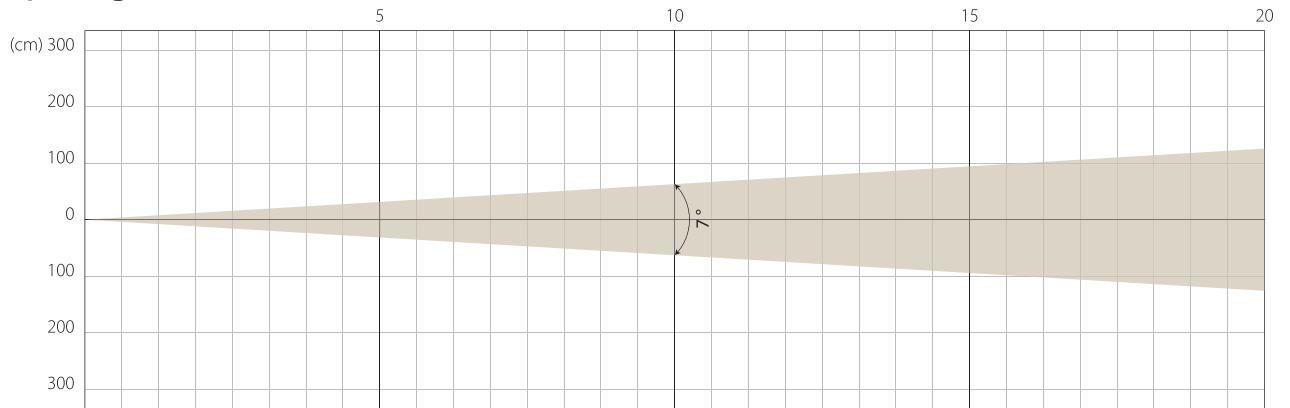
Note: Measurement done with Goniometer

STAGE MODE

NATIVE CRI GREATER THAN 70

MIN ZOOM

Beam Opening

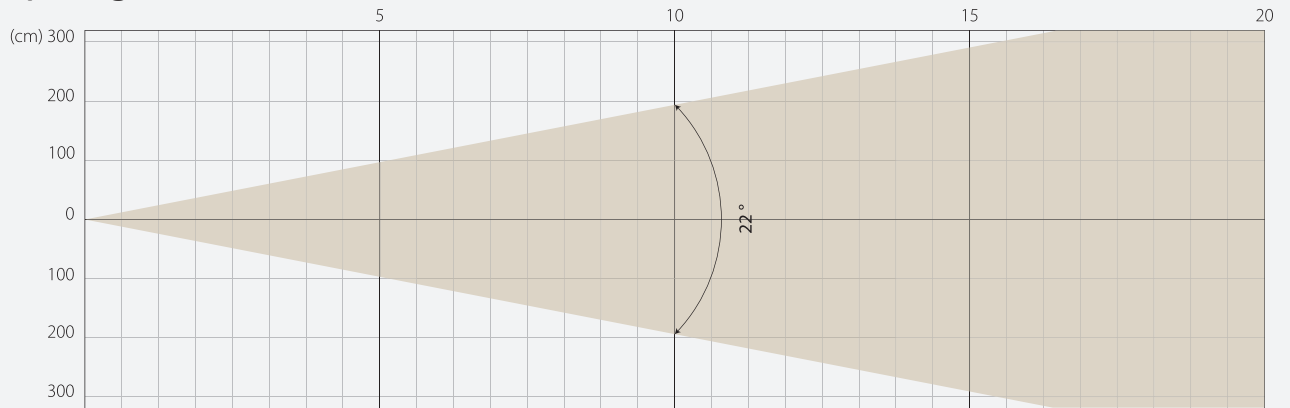


Intensity

Distance (m)	5		10		15		20	
unit	lux	diameter	lux	diameter	lux	diameter	lux	diameter
White	61669	0,61	15417	1,22	6852	1,83	3854	2,45

MIDDLE ZOOM

Beam Opening

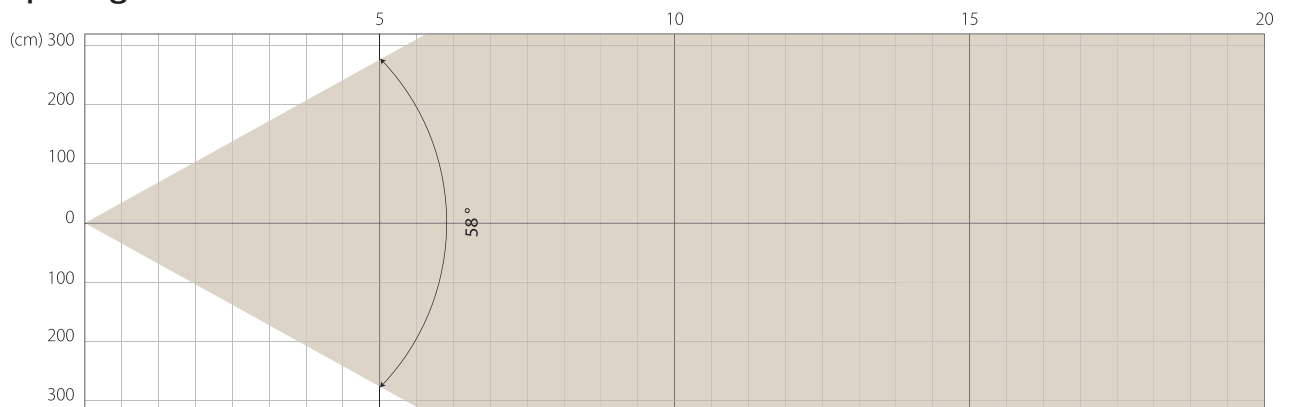


Intensity

Distance (m)	5		10		15		20	
unit	lux	diameter	lux	diameter	lux	diameter	lux	diameter
White	14547	1,94	3637	3,89	1616	5,83	909	7,78

MAX ZOOM

Beam Opening



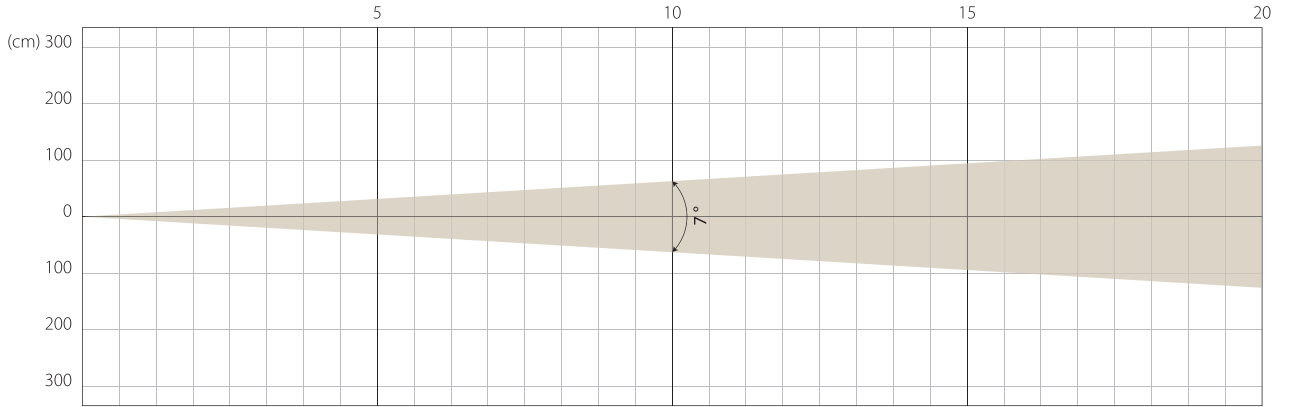
Intensity

Distance (m)	5		10		15		20	
unit	lux	diameter	lux	diameter	lux	diameter	lux	diameter
White	2497	5,54	624	11,09	277	16,63	156	22,17

Note: Measurement done with Goniometer

MIN ZOOM

Beam Opening

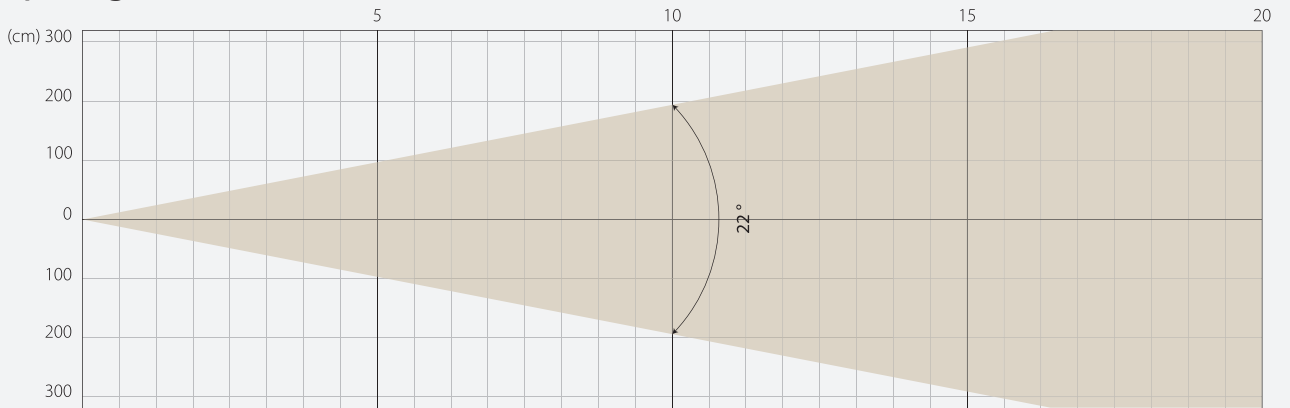


Intensity

Distance (m)	5		10		15		20	
unit	lux	diameter	lux	diameter	lux	diameter	lux	diameter
White	42577	0,61	10644	1,22	4731	1,83	2661	2,45

MIDDLE ZOOM

Beam Opening

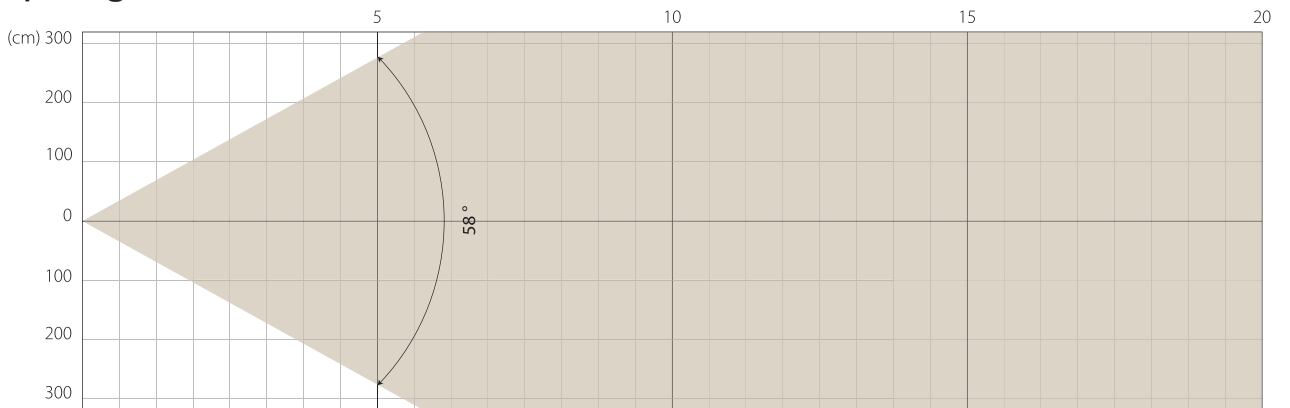


Intensity

Distance (m)	5		10		15		20	
unit	lux	diameter	lux	diameter	lux	diameter	lux	diameter
White	9882	1,94	2470	3,89	1098	5,83	618	7,78

MAX ZOOM

Beam Opening



Intensity

Distance (m)	5		10		15		20	
unit	lux	diameter	lux	diameter	lux	diameter	lux	diameter
White	1689	5,54	422	11,09	188	16,63	106	22,17

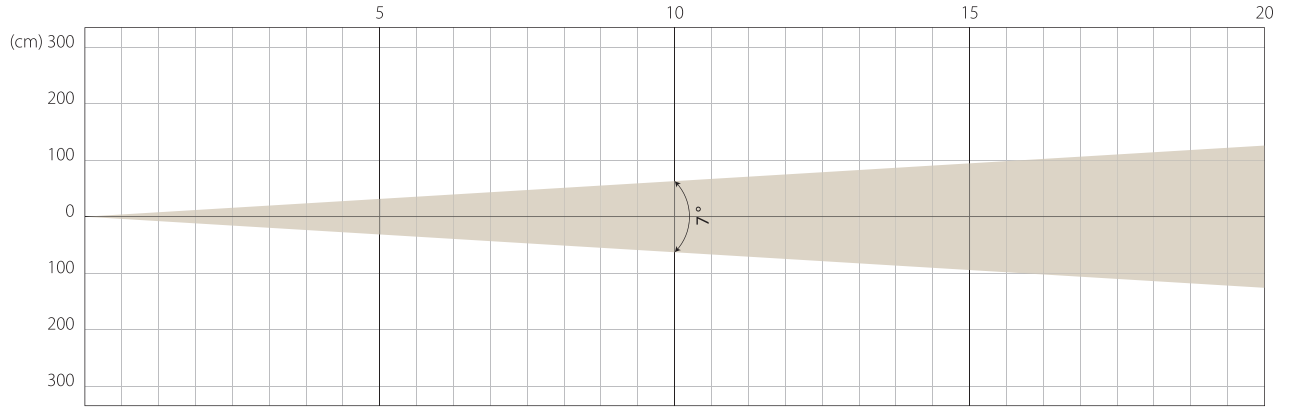
Note: Measurement done with Goniometer

SUPER SILENCE MODE

NATIVE CRI GREATER THAN 70

MIN ZOOM

Beam Opening

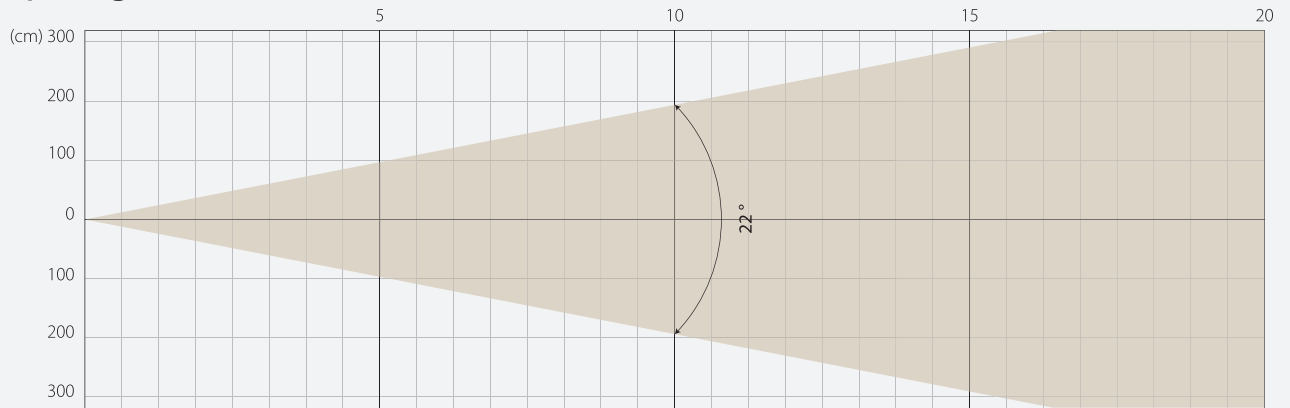


Intensity

Distance (m)	5		10		15		20	
unit	lux	diameter	lux	diameter	lux	diameter	lux	diameter
White	28126	0,61	7031	1,22	3125	1,83	1758	2,45

MIDDLE ZOOM

Beam Opening

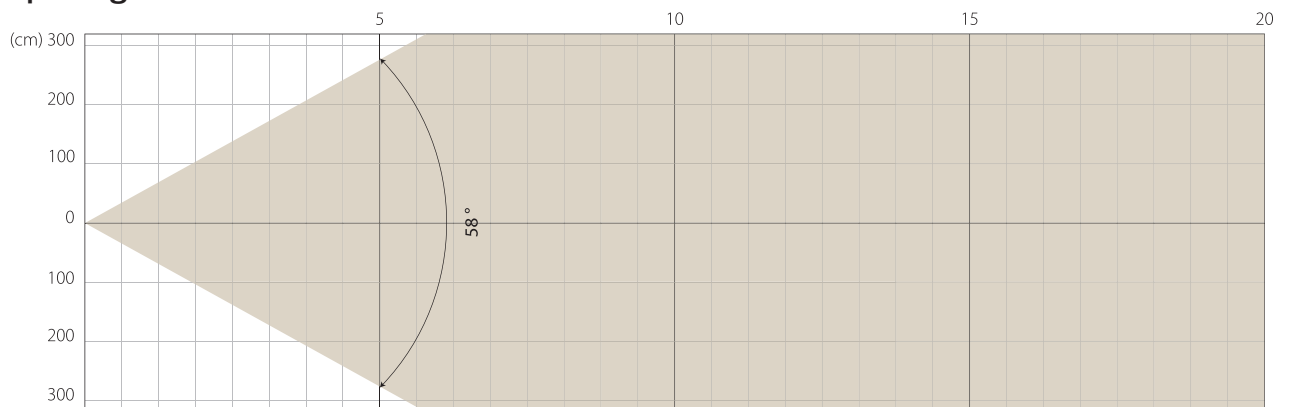


Intensity

Distance (m)	5		10		15		20	
unit	lux	diameter	lux	diameter	lux	diameter	lux	diameter
White	6581	1,94	1645	3,89	731	5,83	411	7,78

MAX ZOOM

Beam Opening

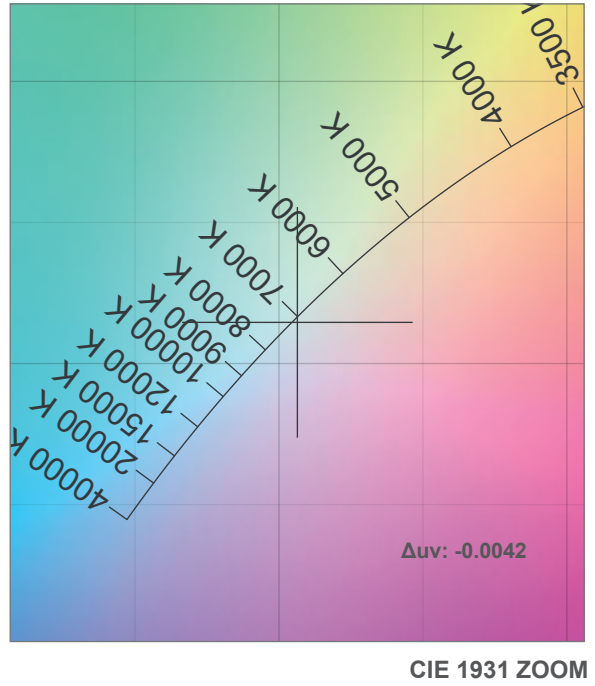
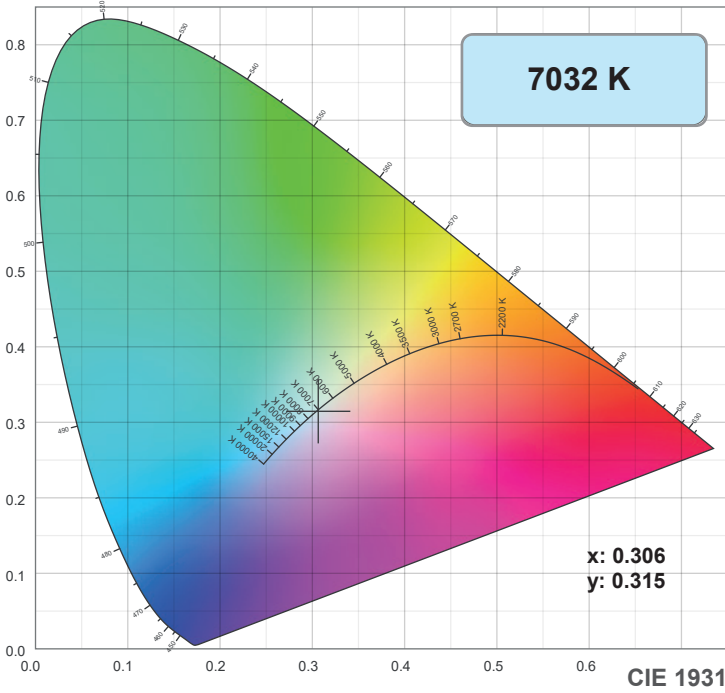


Intensity

Distance (m)	5		10		15		20	
unit	lux	diameter	lux	diameter	lux	diameter	lux	diameter
White	1121	5,54	280	11,09	125	16,63	70	22,17

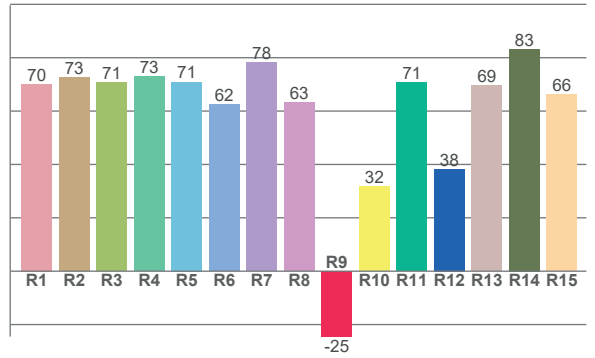
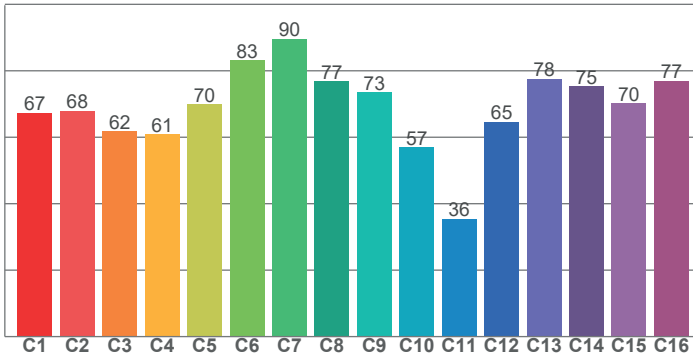
Note: Measurement done with Goniometer

COLOR DETAILS



TM-30: 69.0

CRI: 70.2 (R1-R8)



CRI R values, only R1-R8 are used to calculate final CRI value

R1	R2	R3	R4	R5	R6	R7	R8	R9	R10	R11	R12	R13	R14	R15
70.2	72.6	70.7	73.0	71.0	62.4	78.2	63.2	-24.5	31.7	70.8	38.3	69.5	83.2	66.2

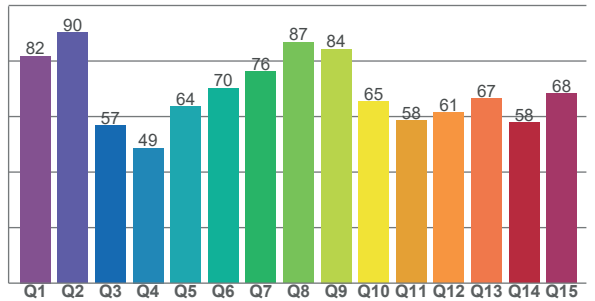
TM30 C values, 16 binned values out of total of 99 C values

C1	C2	C3	C4	C5	C6	C7	C8	C9	C10	C11	C12	C13	C14	C15	C16
67.3	67.9	61.8	60.9	69.9	83.1	89.5	76.9	73.5	56.9	35.5	64.7	77.5	75.3	70.2	77.0

CQS Q values

Q1	Q2	Q3	Q4	Q5	Q6	Q7	Q8	Q9	Q10	Q11	Q12	Q13	Q14	Q15
81.8	90.2	56.8	48.7	63.6	70.2	76.2	86.8	84.4	65.4	58.5	61.4	66.5	57.8	68.3

CQS: 66.9



Color parameters

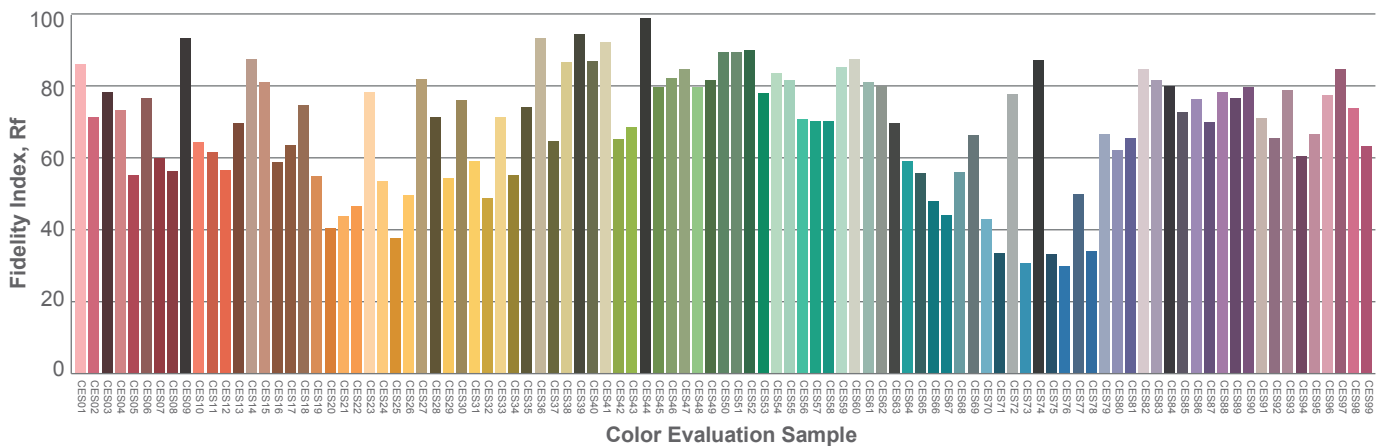
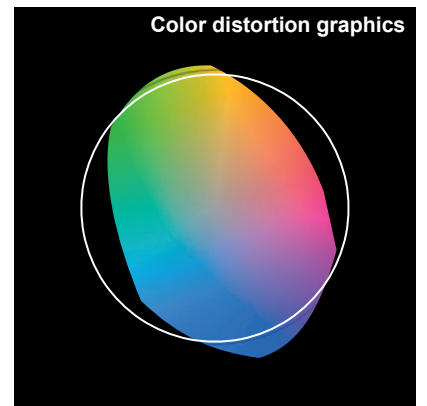
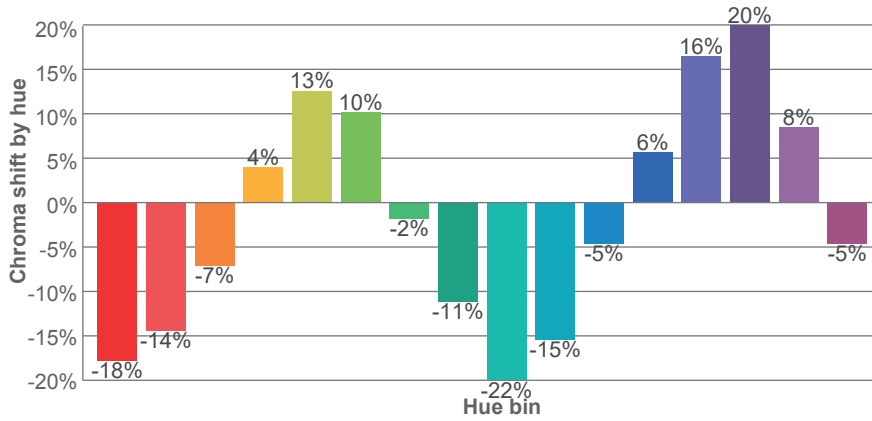
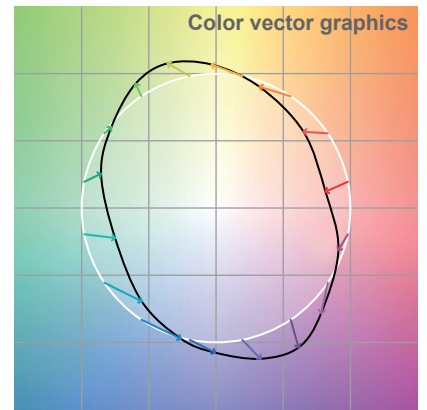
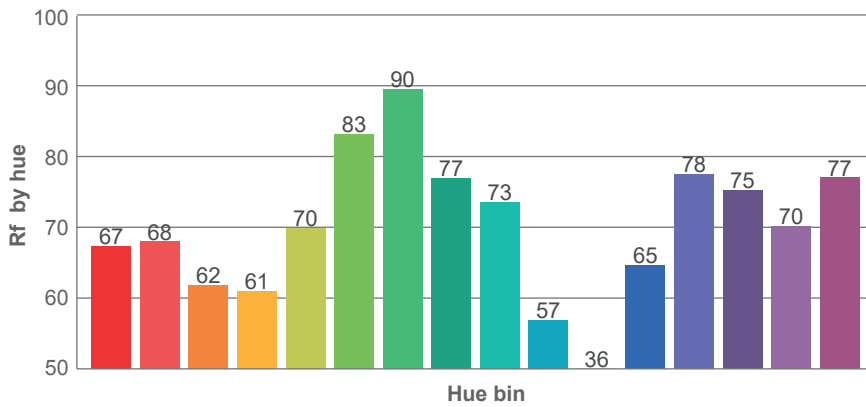
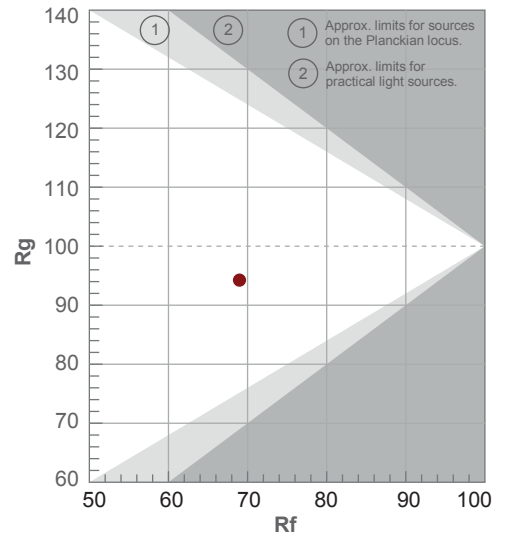
Color temperature	Color rendering index	Red component	Color fidelity	Color gamut	Color quality scale	Color coordinate cie 1931	Color coordinate cie 1931	Color coordinate	Color coordinate	Color deviation from black body
CCT	CRI	CRI R9	TM30 Rf	TM30 Rg	CQS	x	y	u	v	Δuv
7032 K	70.2	-24.5	69.0	94.2	66.9	0.306	0.315	0.199	0.306	-0.0042

TM-30 DETAILS

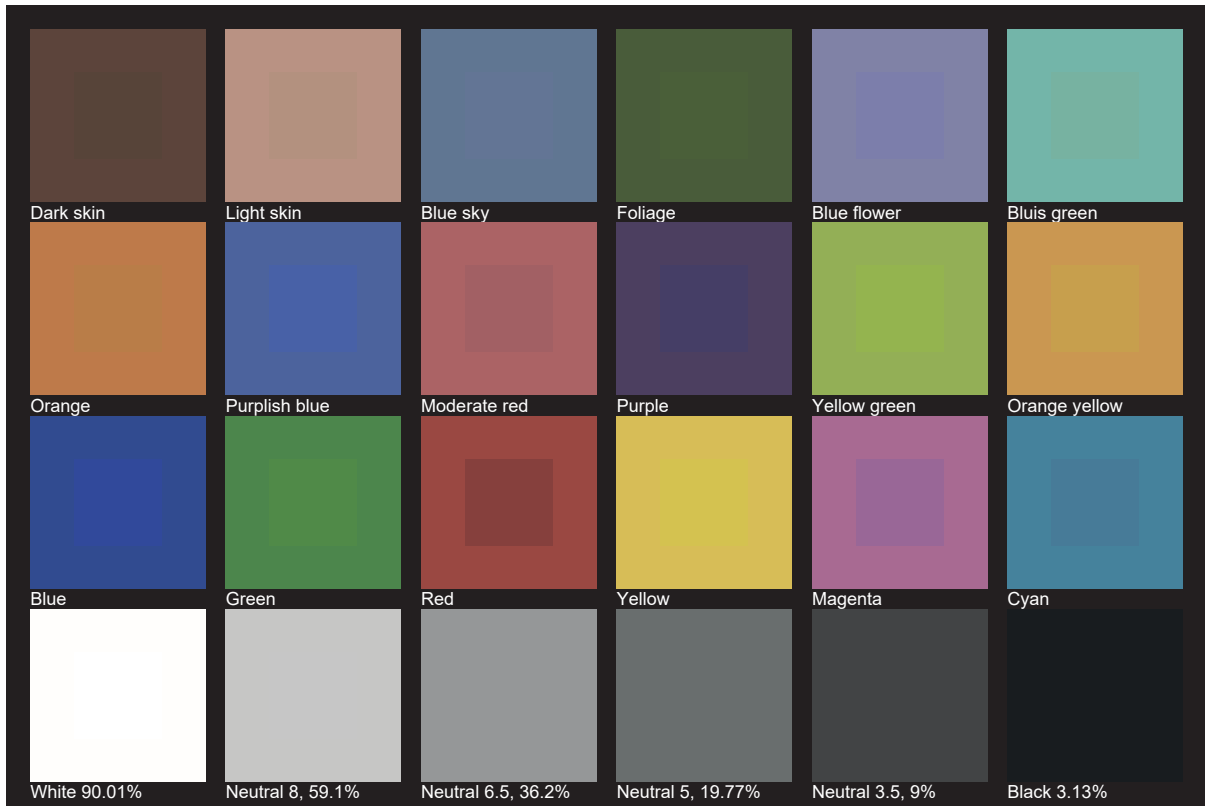
Rf 69.0
Fidelity index Rf

Rg 94.2
Gamut index Rg

Hue Bin	R _f	Shifts (%)	
		Chroma	Hue
1	67	-18%	-4%
2	68	-14%	11%
3	62	-7%	23%
4	61	4%	24%
5	70	13%	14%
6	83	10%	-2%
7	90	-2%	-7%
8	77	-11%	-8%
9	73	-22%	7%
10	57	-15%	27%
11	36	-5%	32%
12	65	6%	20%
13	78	16%	11%
14	75	20%	-7%
15	70	8%	-22%
16	77	-5%	-13%



TLCI 45





AYRTON

Digital Lighting