



# DOMINO PROFILE

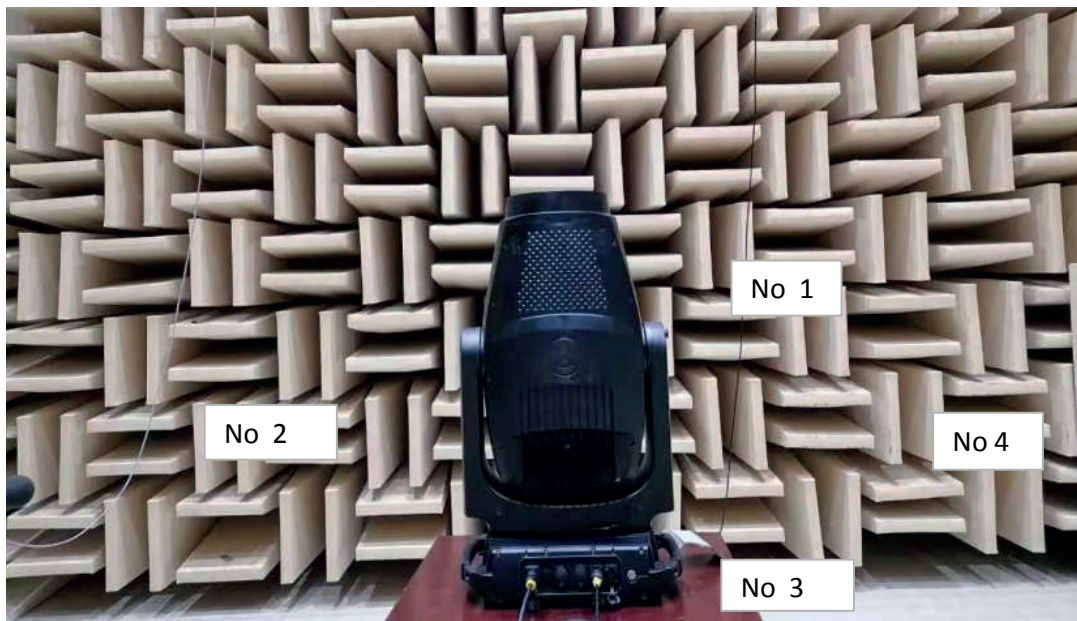
NOISE MEASUREMENTS



**AYRTON**  
Digital Lighting

## 1 Inspection instructions

This test was carried out in the semi-silencing room of Guangzhou Quality Supervision and Testing Institute (GQT) The indoor environmental noise was less than 5dB (A). The stage lamp was placed on the standard test table of the semi-silencing room, When the stage lamp was turned on, the test microphone was 1m away from the four directions of the stage lamp to detect its sound pressure level.



**Figure 1** Test setup

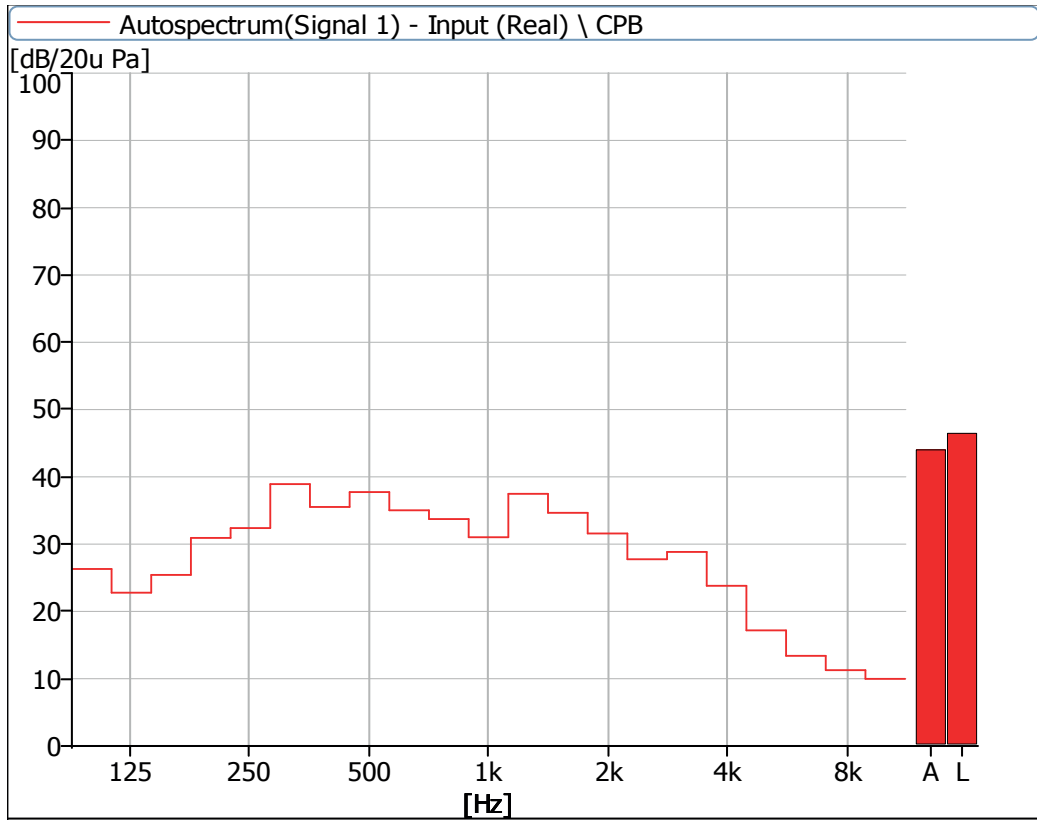


**Figure 2** Sample serial number information

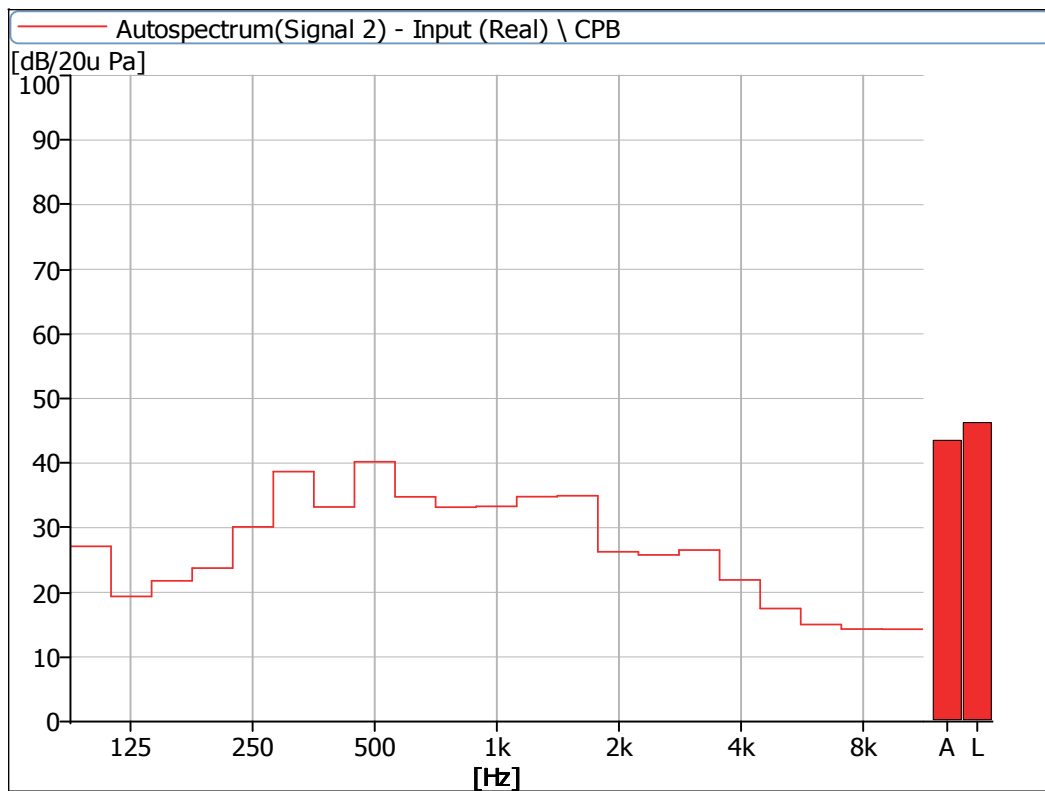
## 2 Noise Detection Results of Stage Luminaires (The Auto mode)

Frequency (Hz)	Sound Pressure Level in Auto Mode (dB)							
	Static				Dynamic			
	No 1	No 2	No 3	No 4	No 1	No 2	No 3	No 4
100	26.3	27.1	28.1	26.6	27.4	28.2	28.7	27.6
125	22.8	19.4	21.7	19.5	24.6	21.9	24.2	23.5
160	25.4	21.8	23.3	18.9	26.4	23.3	24.3	22.3
200	30.9	23.8	29.5	22.0	35.2	35.3	38.7	35.2
250	32.4	30.1	32.2	28.8	37.3	36.9	39.3	35.4
315	38.9	38.7	40.3	35.5	39.3	39.2	40.3	36.8
400	35.5	33.2	35.3	32.4	34.5	32.0	32.0	32.7
500	37.7	40.2	37.7	38.4	39.3	39.5	37.6	39.4
630	35.0	34.8	35.4	35.0	34.8	35.9	35.9	36.4
800	33.7	33.2	34.0	33.3	32.3	31.6	33.4	32.7
1000	31.0	33.3	30.8	33.9	32.1	32.2	31.9	33.0
1250	37.5	34.8	35.6	39.5	40.0	37.3	40.8	39.3
1600	34.7	34.9	37.2	37.1	36.4	33.8	36.8	37.8
2000	31.6	26.3	32.3	32.3	31.4	27.7	32.0	30.9
2500	27.8	25.8	28.3	26.9	28.9	26.8	29.2	28.4
3150	28.8	26.5	29.8	28.4	30.5	29.8	30.9	29.6
4000	23.8	21.9	23.3	21.7	23.7	23.4	24.9	22.7
5000	17.2	17.5	18.2	17.2	19.1	19.2	19.9	18.6
6300	13.4	15.0	13.3	12.5	15.1	16.1	14.2	13.9
8000	11.3	14.3	12.5	10.1	12.8	15.1	13.1	11.0
10000	10.0	14.3	11.8	9.5	11.2	14.8	11.4	9.7

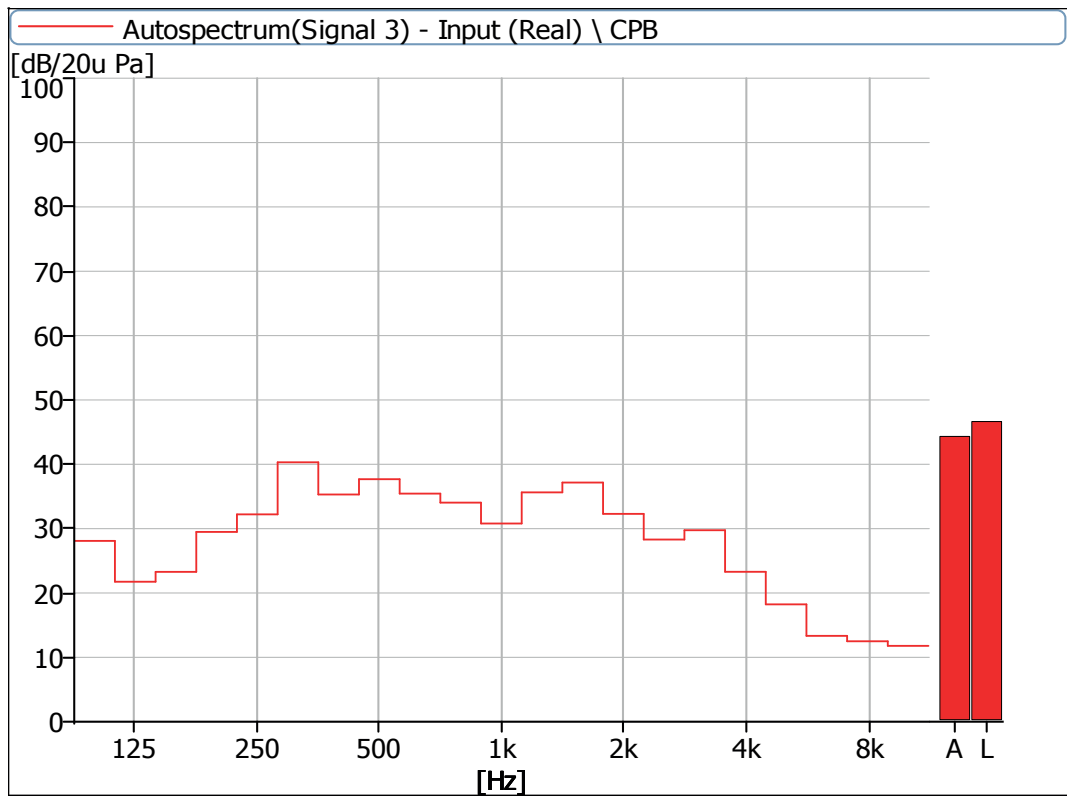
Frequency (Hz)	Sound Pressure Level in Auto Mode (dB)							
	Static				Dynamic			
	No 1	No 2	No 3	No 4	No 1	No 2	No 3	No 4
Leq	46.5	46.3	46.6	46.3	47.6	47.0	48.2	47.1
A-weighted dB (A)	44.0	43.5	44.3	45.0	45.3	43.9	45.7	45.3
Average sound pressure level dB (A)	44.3				45.1			



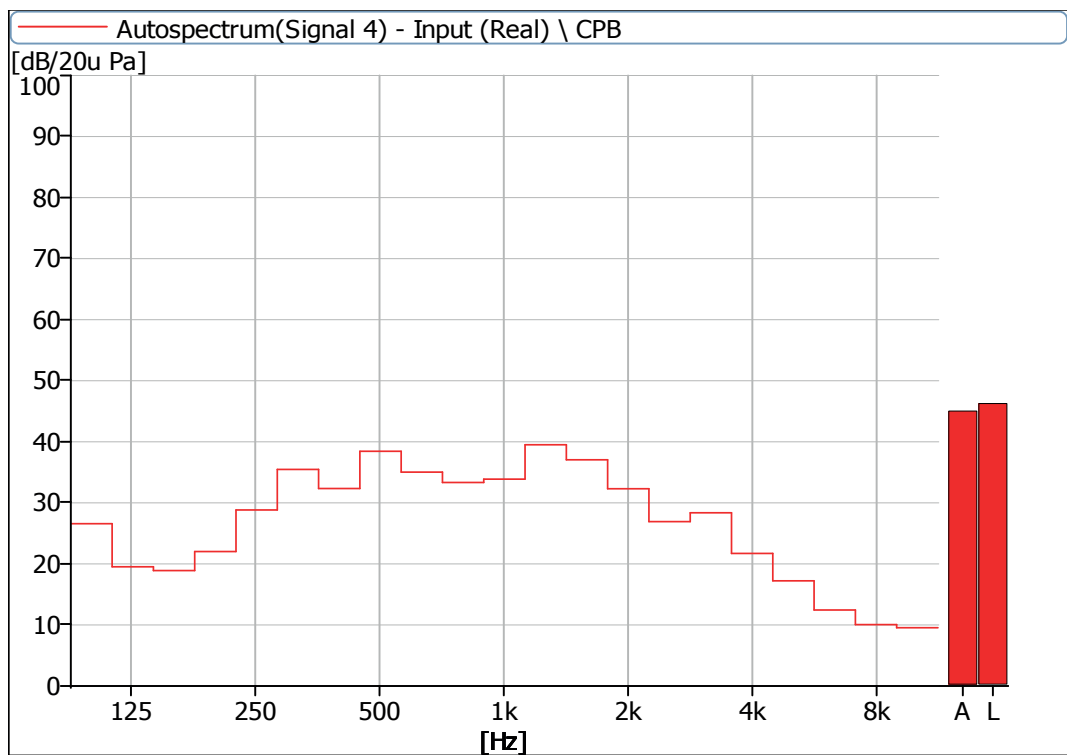
**Figure 3** Noise Spectrum of Stage Luminaires (The Auto mode, Static, No 1)



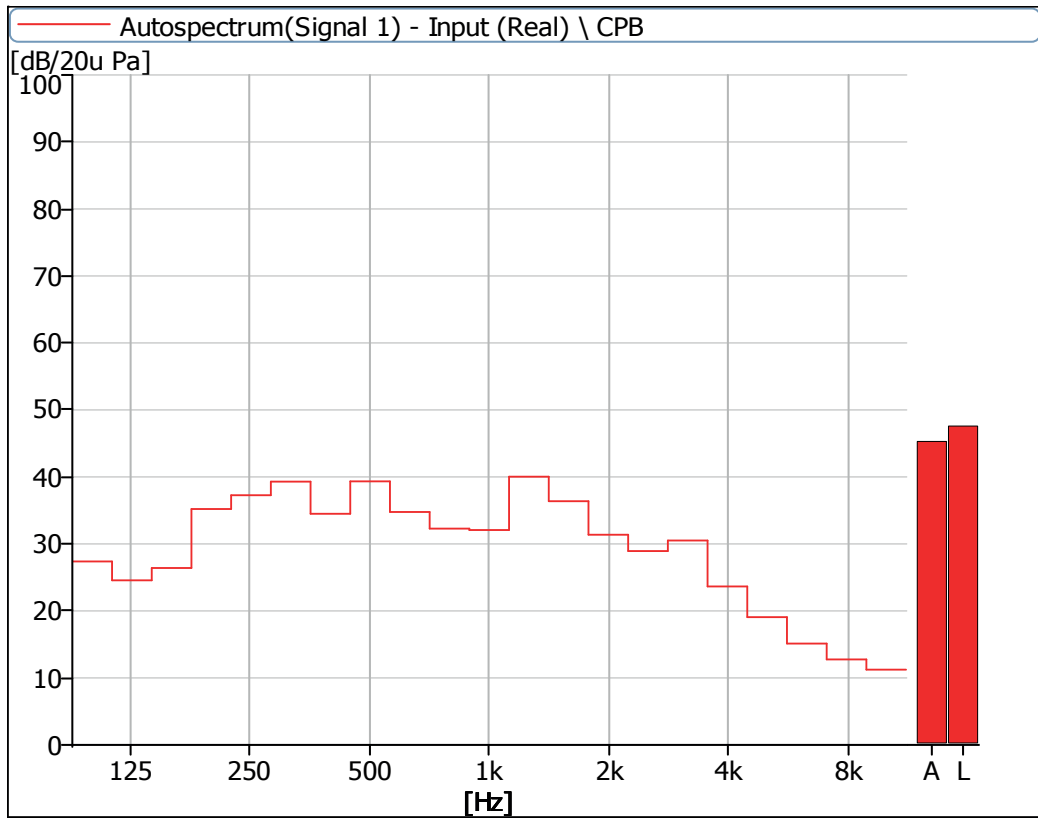
**Figure 4** Noise Spectrum of Stage Luminaires (The Auto mode, Static, No 2)



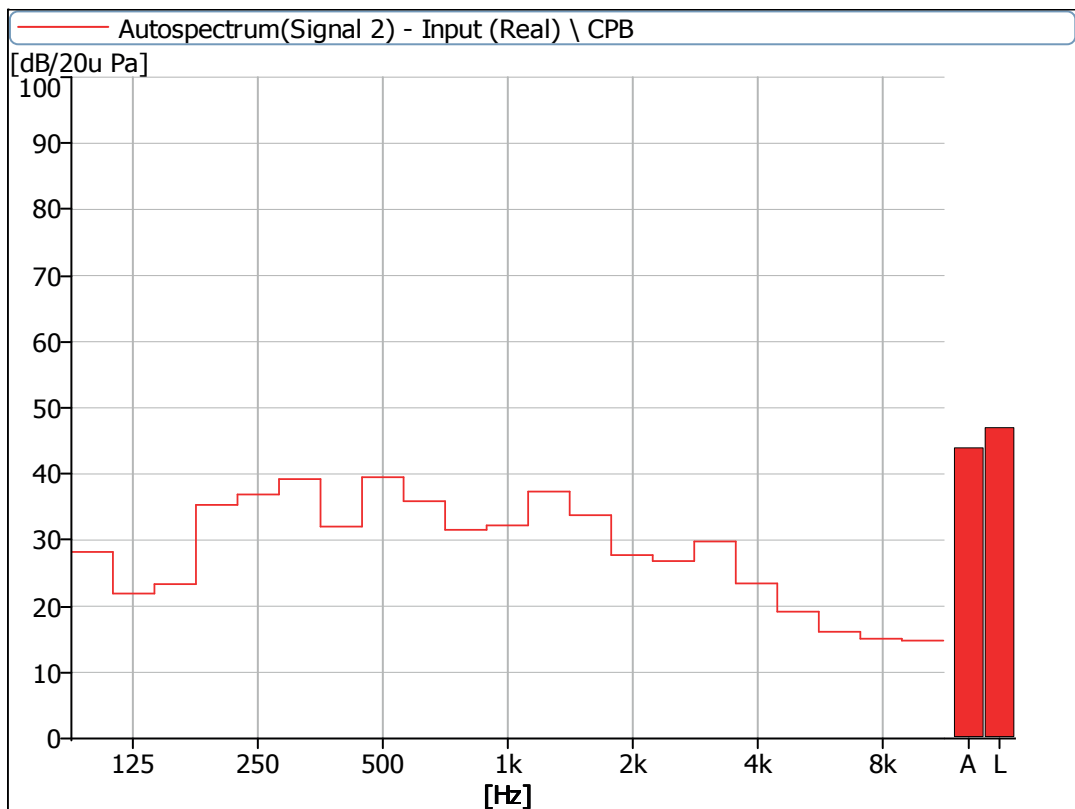
**Figure 5** Noise Spectrum of Stage Luminaires (The Auto mode, Static, No 3)



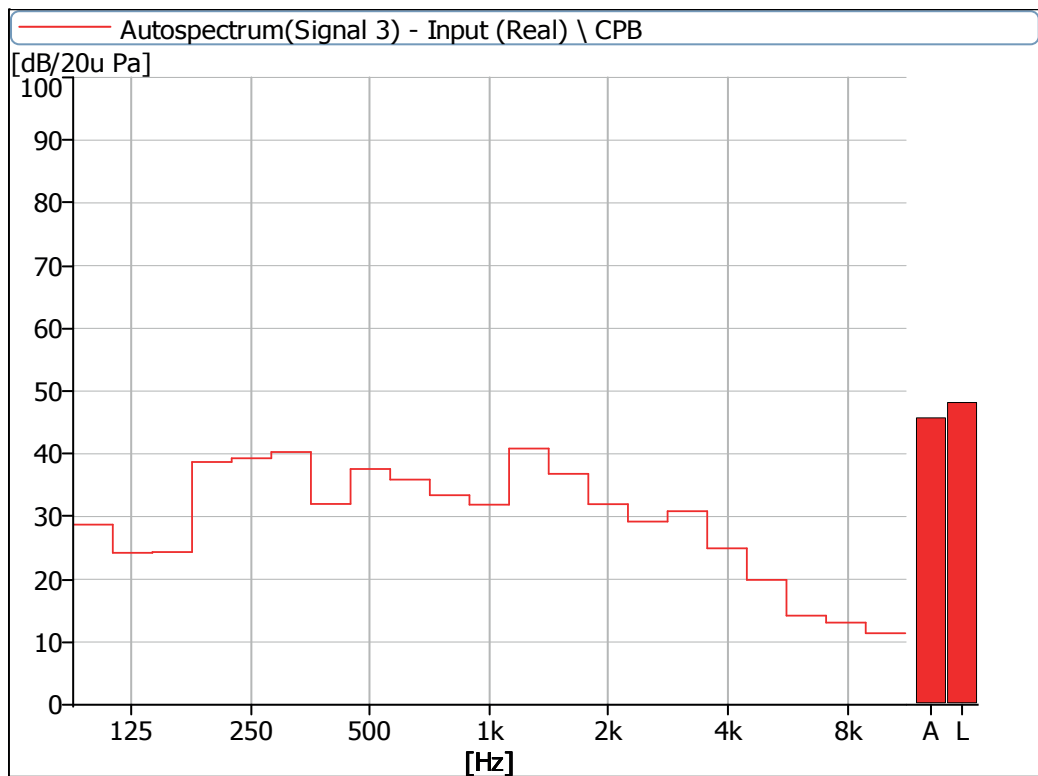
**Figure 6** Noise Spectrum of Stage Luminaires (The Auto mode, Static, No 4)



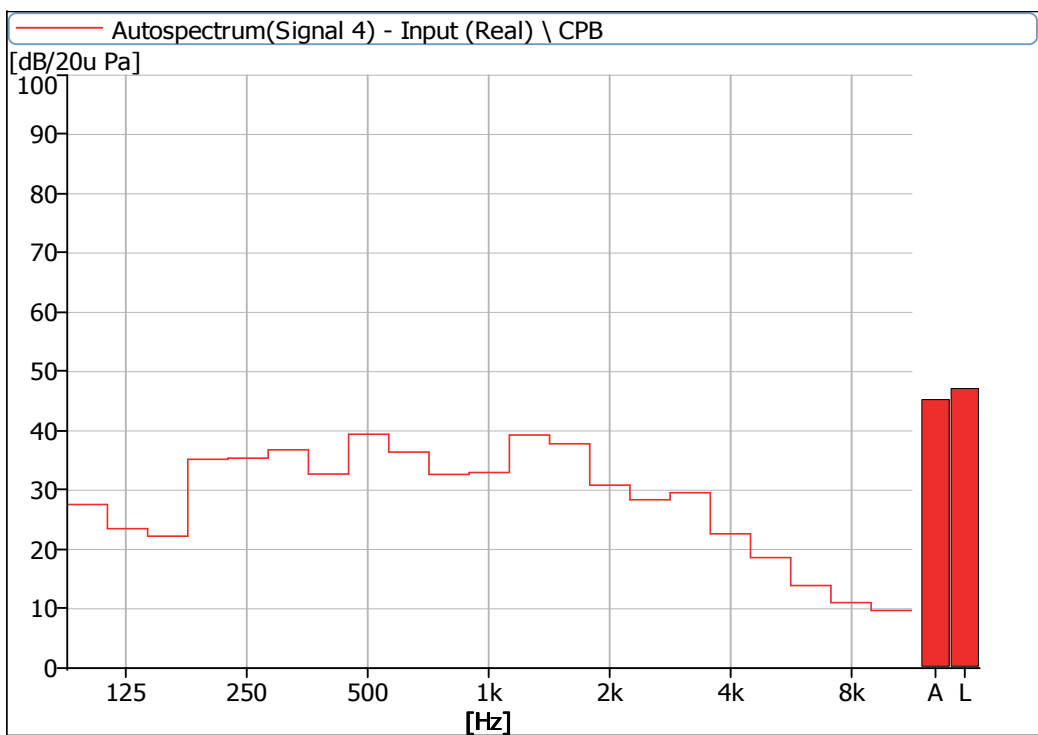
**Figure 7** Noise Spectrum of Stage Luminaires (The Auto mode, Dynamic, No 1)



**Figure 8** Noise Spectrum of Stage Luminaires (The Auto mode, Dynamic, No 2)



**Figure 9** Noise Spectrum of Stage Luminaires (The Auto mode, Dynamic, No 3)

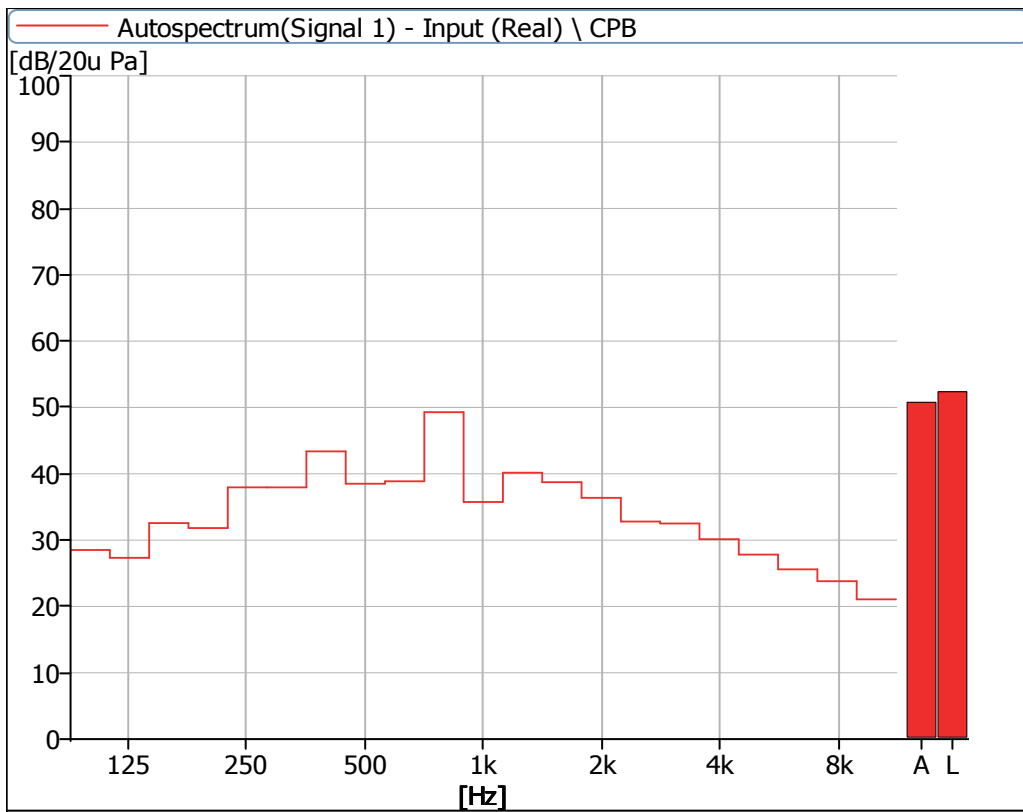


**Figure 10** Noise Spectrum of Stage Luminaires (The Auto mode, Dynamic, No 4)

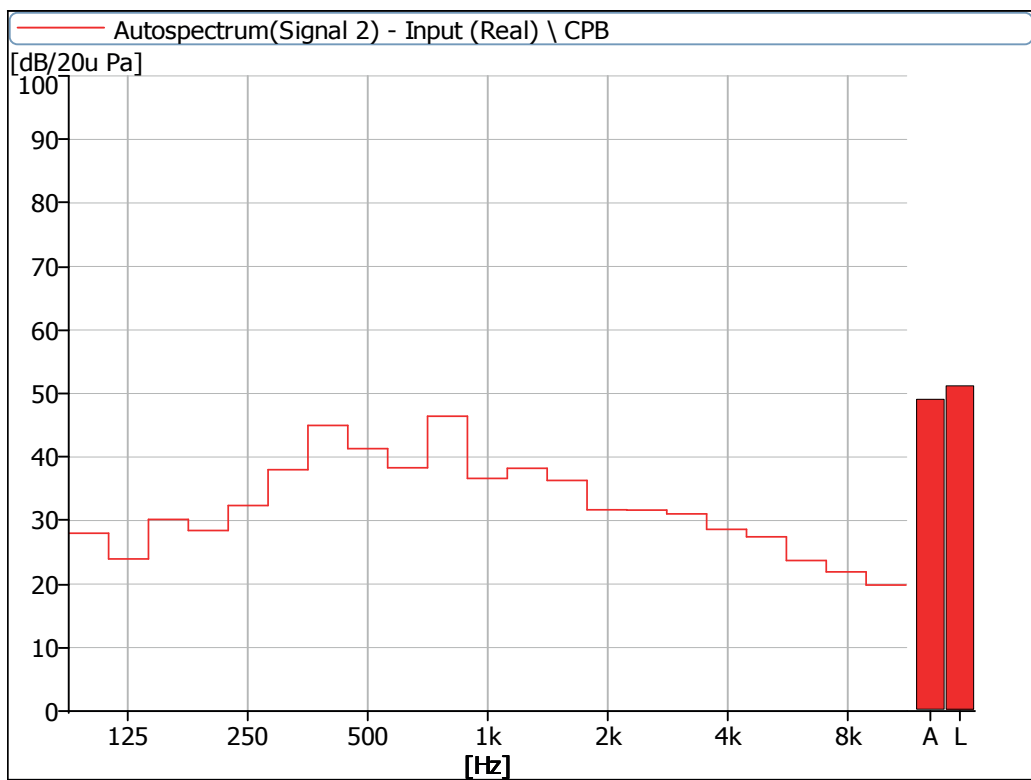
### 3 Noise Detection Results of Stage Luminaires (The Stage mode)

Frequency (Hz)	Sound Pressure Level in Stage Mode (dB)							
	Static				Dynamic			
	No 1	No 2	No 3	No 4	No 1	No 2	No 3	No 4
100	29.2	28.7	28.1	26.0	27.8	26.8	28.9	27.7
125	27.3	24.0	24.6	24.1	27.1	23.2	25.6	26.1
160	32.6	30.2	31.1	30.4	34.0	31.4	33.6	32.4
200	31.8	28.4	30.8	27.2	37.7	39.3	41.1	36.9
250	38.0	32.4	36.3	32.0	38.9	39.7	39.6	38.0
315	38.0	38.0	38.5	36.6	43.0	42.0	41.9	43.6
400	43.4	45.0	45.7	42.4	46.2	44.2	43.7	42.5
500	38.5	41.3	39.0	40.1	41.8	38.9	39.9	38.0
630	38.9	38.3	38.9	38.6	37.8	37.9	37.4	36.8
800	49.3	46.4	44.8	48.5	43.7	41.1	44.9	42.9
1000	35.7	36.6	34.7	36.9	36.4	37.0	36.6	36.9
1250	40.2	38.2	38.2	43.1	40.7	40.4	41.8	40.3
1600	38.7	36.3	40.4	38.8	39.3	38.7	38.1	39.6
2000	36.4	31.7	37.1	33.7	36.2	35.0	35.2	35.3
2500	32.8	31.6	34.0	32.2	34.5	34.0	34.3	34.0
3150	32.5	31.0	33.5	33.0	34.5	33.9	35.1	32.9
4000	30.1	28.6	30.3	29.2	30.5	31.0	31.9	30.5
5000	27.8	27.4	29.1	28.6	28.8	29.3	29.8	30.3
6300	25.6	23.7	23.4	23.1	25.6	25.7	24.1	27.0
8000	23.8	21.9	23.6	21.2	23.7	24.7	24.2	23.8
10000	21.1	19.8	21.3	18.9	22.2	23.2	22.5	22.9

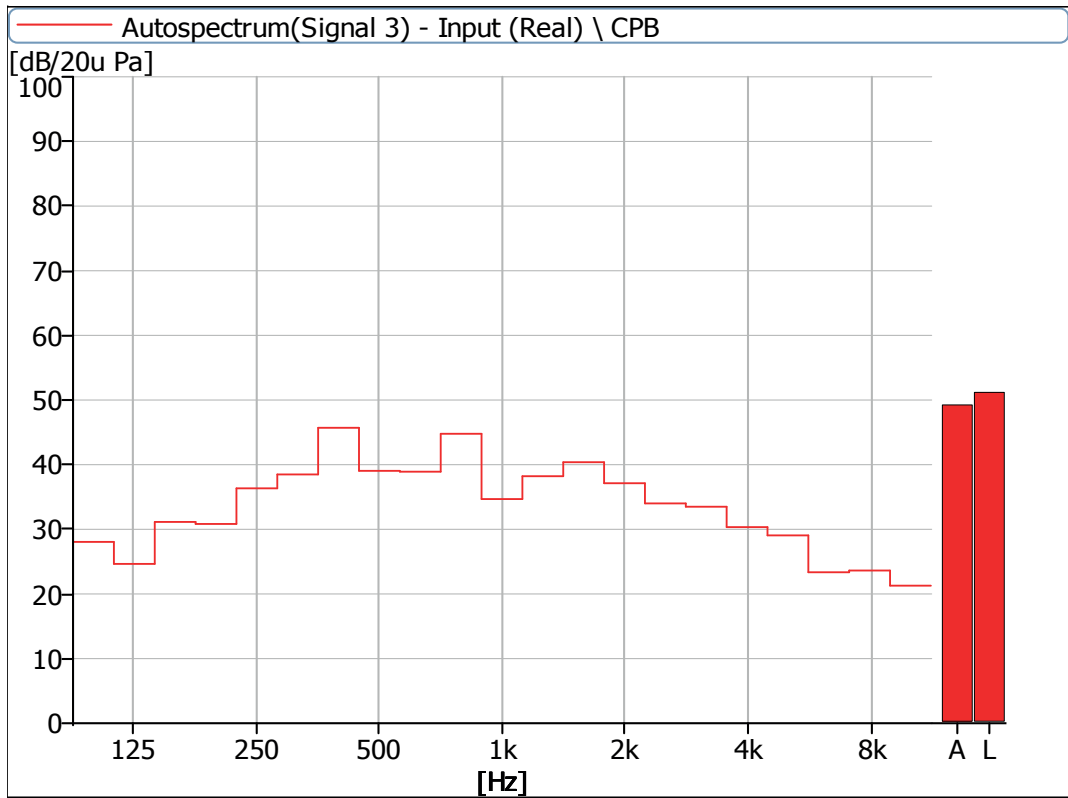
Frequency (Hz)	Sound Pressure Level in Stage Mode (dB)							
	Static				Dynamic			
	No 1	No 2	No 3	No 4	No 1	No 2	No 3	No 4
Leq	52.4	51.2	51.2	51.9	52.4	51.5	52.2	51.3
A-weighted dB(A)	50.8	49.1	49.2	50.7	49.6	48.6	49.6	48.7
Average sound pressure level dB(A)	50.0				49.1			



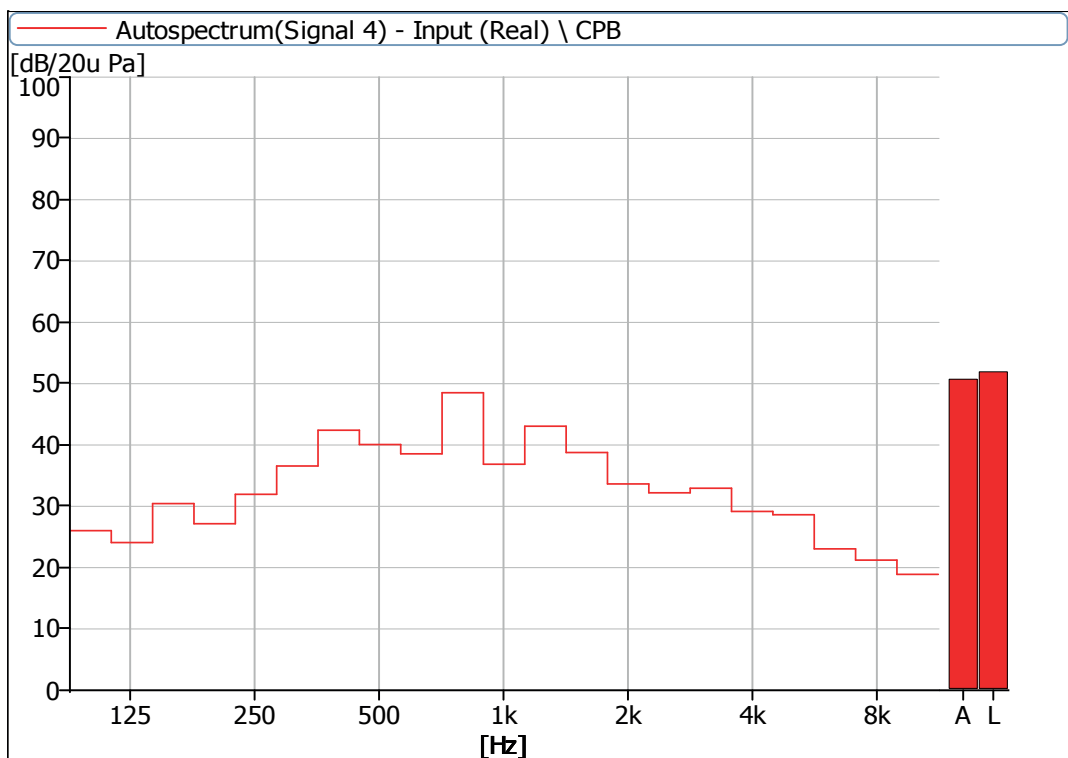
**Figure 11** Noise Spectrum of Stage Luminaires (The Stage mode, Static, No 1)



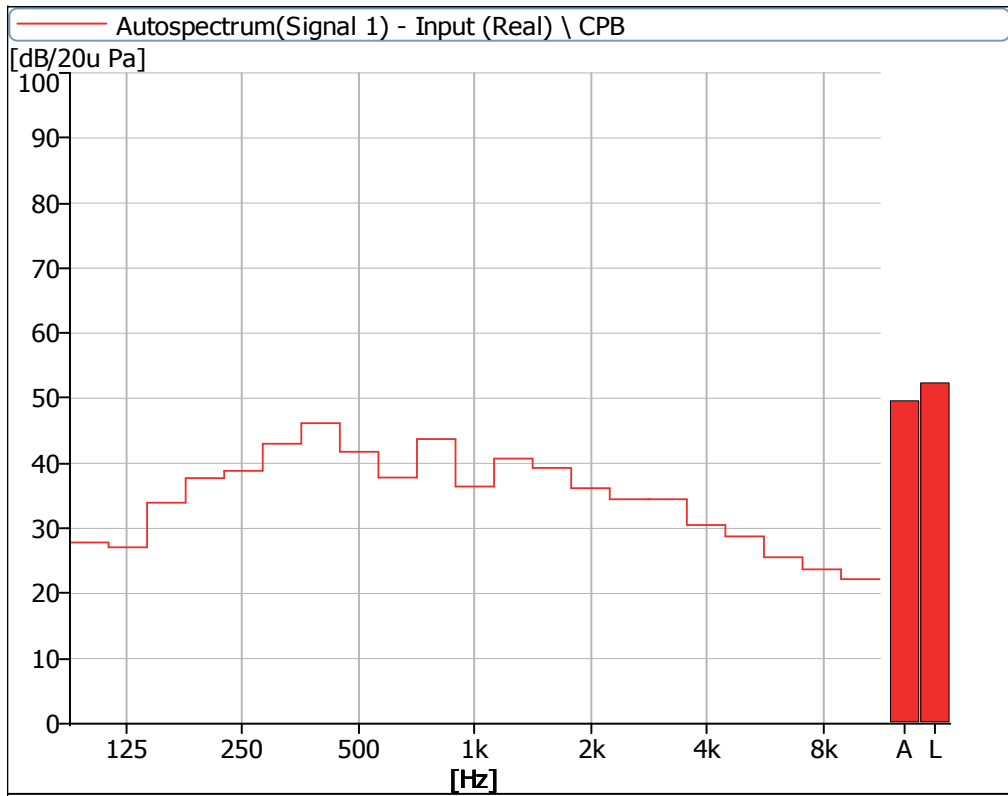
**Figure 12** Noise Spectrum of Stage Luminaires (The Stage mode, Static, No 2)



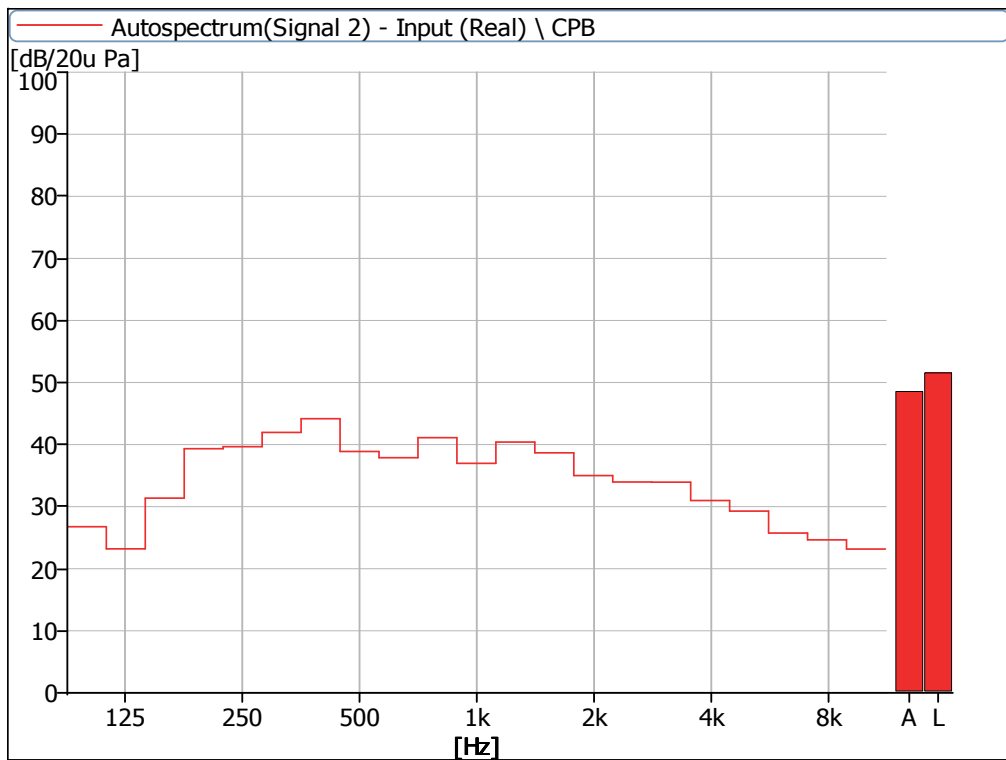
**Figure 13** Noise Spectrum of Stage Luminaires (The Stage mode, Static, No 3)



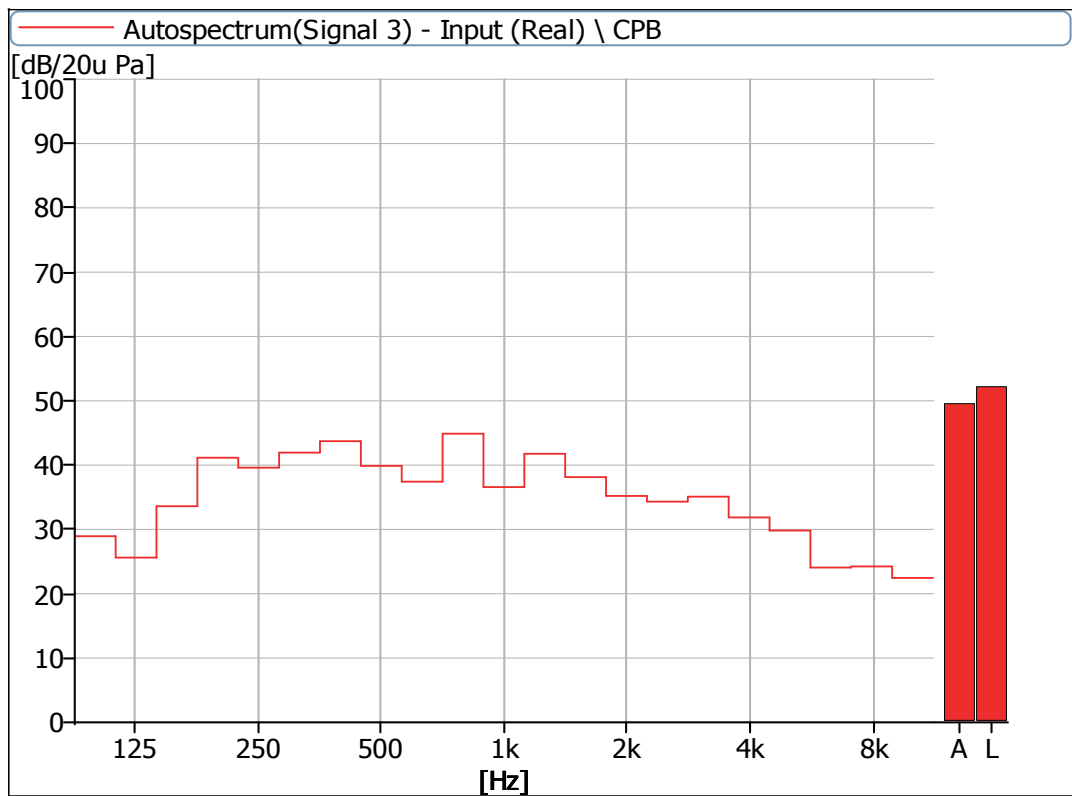
**Figure 14** Noise Spectrum of Stage Luminaires (The Stage mode, Static, No 4)



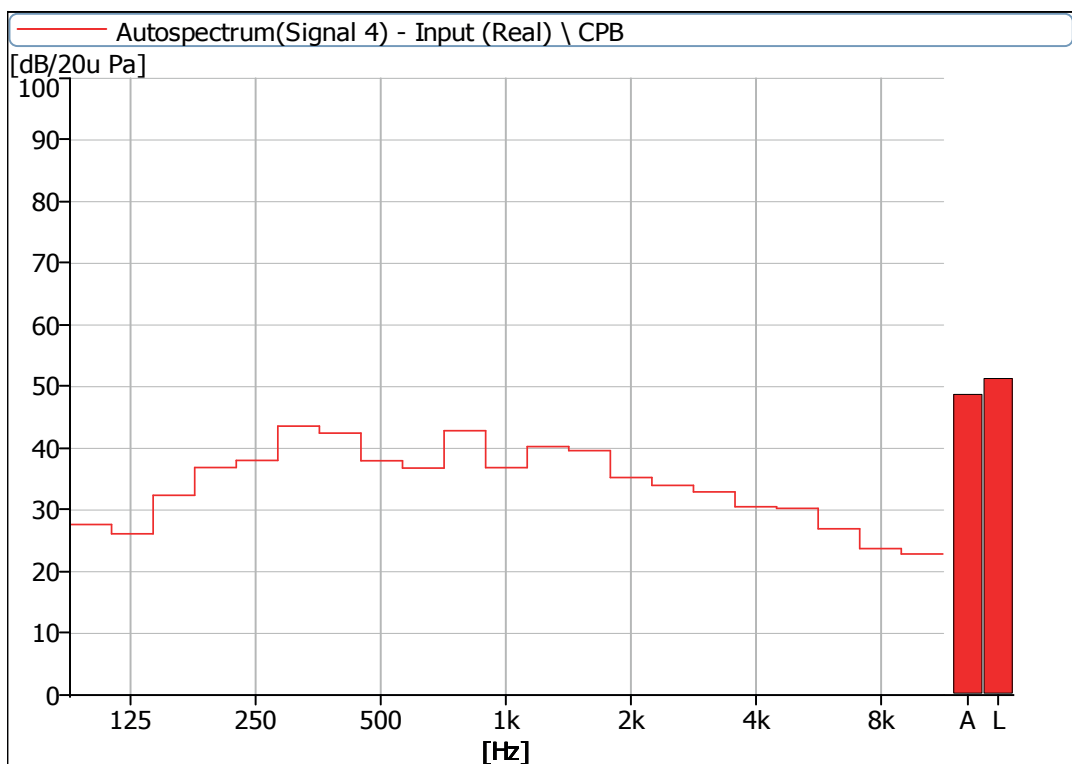
**Figure 15** Noise Spectrum of Stage Luminaires (The Stage mode, Dynamic, No 1)



**Figure 16** Noise Spectrum of Stage Luminaires (The Stage mode, Dynamic, No 2)



**Figure 17** Noise Spectrum of Stage Luminaires (The Stage mode, Dynamic, No 3)

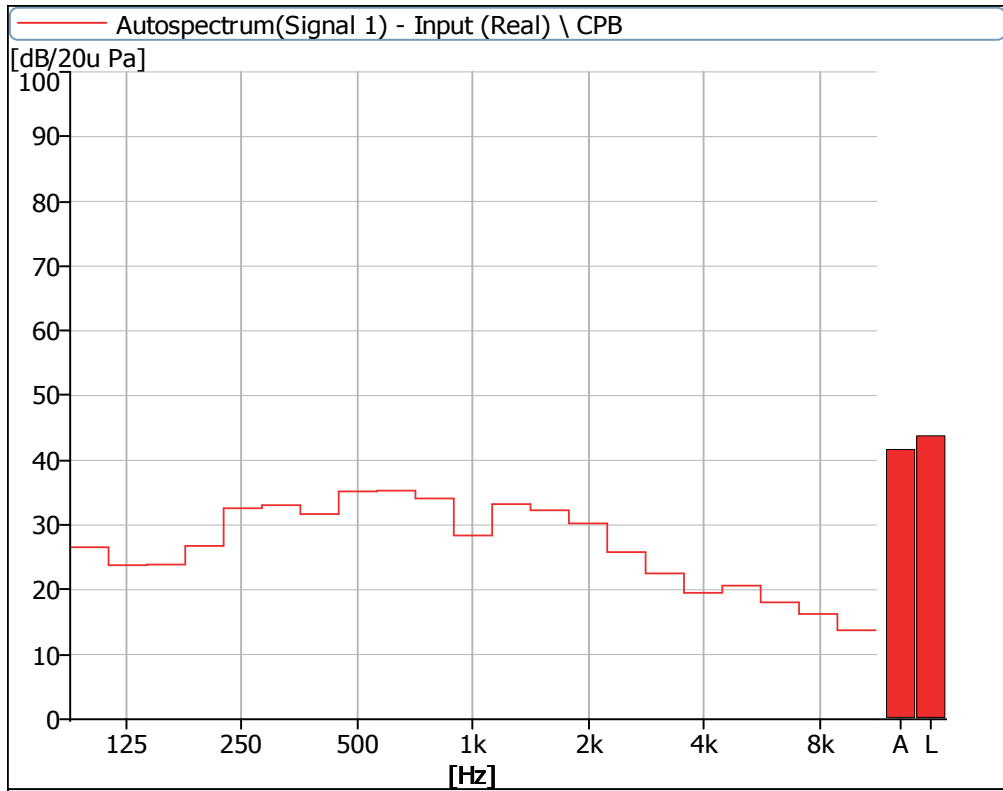


**Figure 18** Noise Spectrum of Stage Luminaires (The Stage mode, Dynamic, No 4)

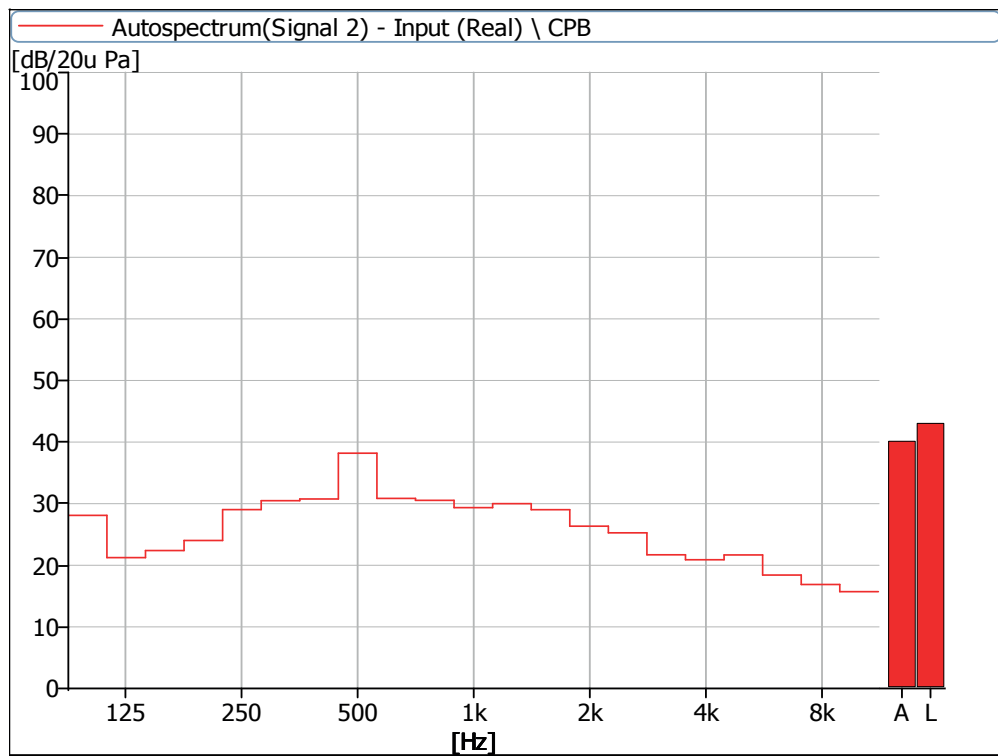
#### 4 Noise Detection Results of Stage Luminaires (The Silence mode)

Frequency (Hz)	Sound Pressure Level in Silence Mode (dB)							
	Static				Dynamic			
	No 1	No 2	No 3	No 4	No 1	No 2	No 3	No 4
100	26.6	28.1	30.5	29.8	27.4	28.5	31.7	28.6
125	23.8	21.2	25.9	21.7	25.2	24.4	26.4	24.6
160	23.9	22.4	22.6	22.4	30.1	28.1	31.2	28.6
200	26.8	24.0	28.8	22.6	36.9	38.6	40.9	37.1
250	32.6	29.0	33.0	28.9	39.6	40.9	39.4	38.7
315	33.1	30.5	33.4	30.5	41.9	42.0	42.7	42.9
400	31.7	30.8	30.6	30.5	38.3	39.9	40.7	38.0
500	35.2	38.2	34.8	38.0	40.3	37.7	45.0	38.3
630	35.3	30.9	37.9	30.3	34.6	34.9	35.1	32.1
800	34.1	30.5	36.8	32.0	34.7	36.3	37.4	39.0
1000	28.4	29.4	28.8	29.3	35.0	38.4	36.6	38.6
1250	33.2	30.0	32.3	28.9	33.9	33.0	32.6	33.5
1600	32.3	29.0	31.0	29.5	33.6	32.4	32.7	33.3
2000	30.3	26.3	29.2	25.8	32.4	30.9	31.4	33.9
2500	25.8	25.3	25.6	24.4	29.0	28.2	28.6	28.2
3150	22.5	21.7	21.6	21.2	29.2	25.4	26.4	24.4
4000	19.5	20.9	20.5	21.2	24.4	23.0	23.7	21.5
5000	20.6	21.7	22.1	23.1	23.5	23.5	23.5	23.6
6300	18.1	18.4	16.2	17.4	20.6	20.0	18.9	20.6
8000	16.3	16.9	17.5	15.9	17.9	19.5	18.6	17.2
10000	13.7	15.7	14.7	13.6	14.6	18.0	15.9	15.8

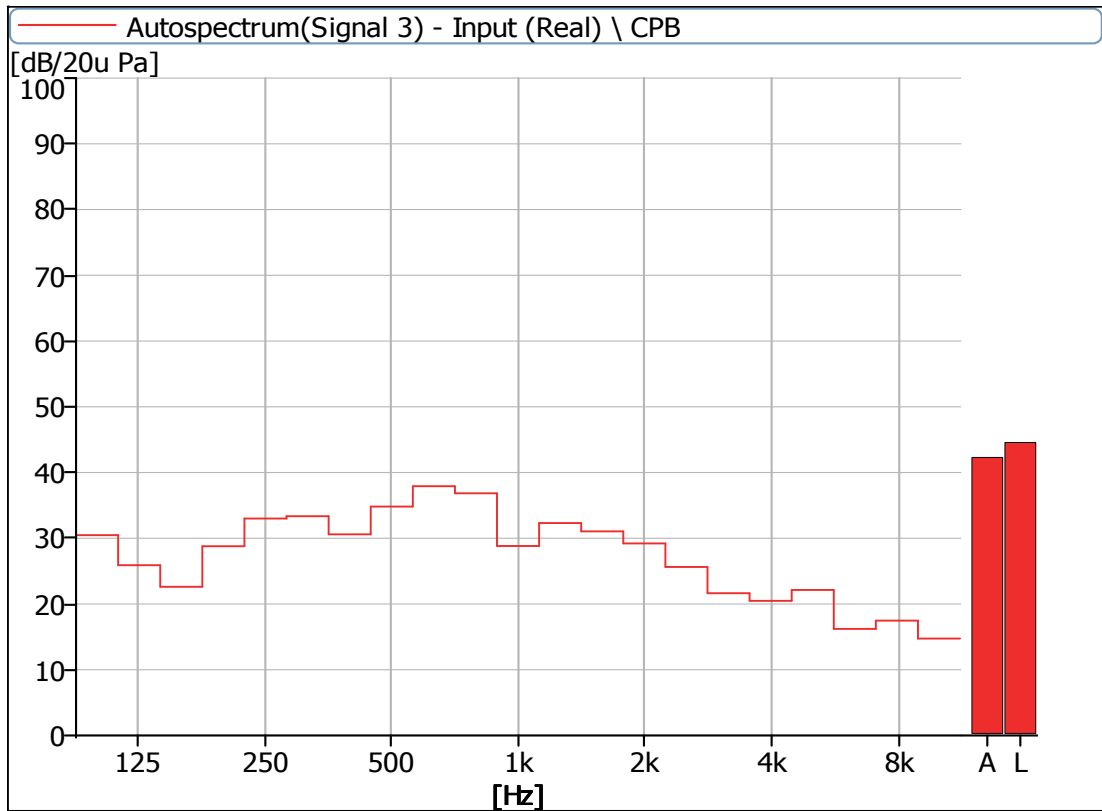
Frequency (Hz)	Sound Pressure Level in Silence Mode (dB)							
	Static				Dynamic			
	No 1	No 2	No 3	No 4	No 1	No 2	No 3	No 4
Leq	43.8	43.0	44.6	42.7	48.8	49.4	50.7	49.2
A-weighted dB(A)	41.7	40.1	42.3	40.0	44.8	45.1	46.5	45.6
Average sound pressure level dB(A)	41.1				45.5			



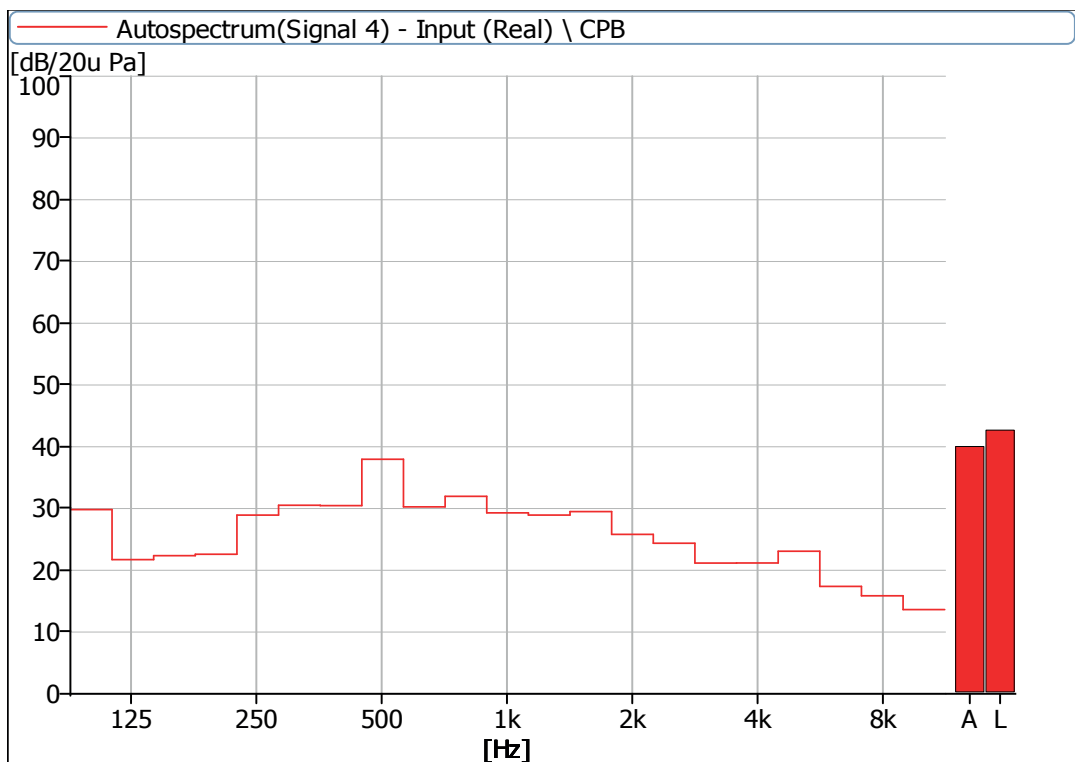
**Figure 19** Noise Spectrum of Stage Luminaires (The Silence mode, Static, No 1)



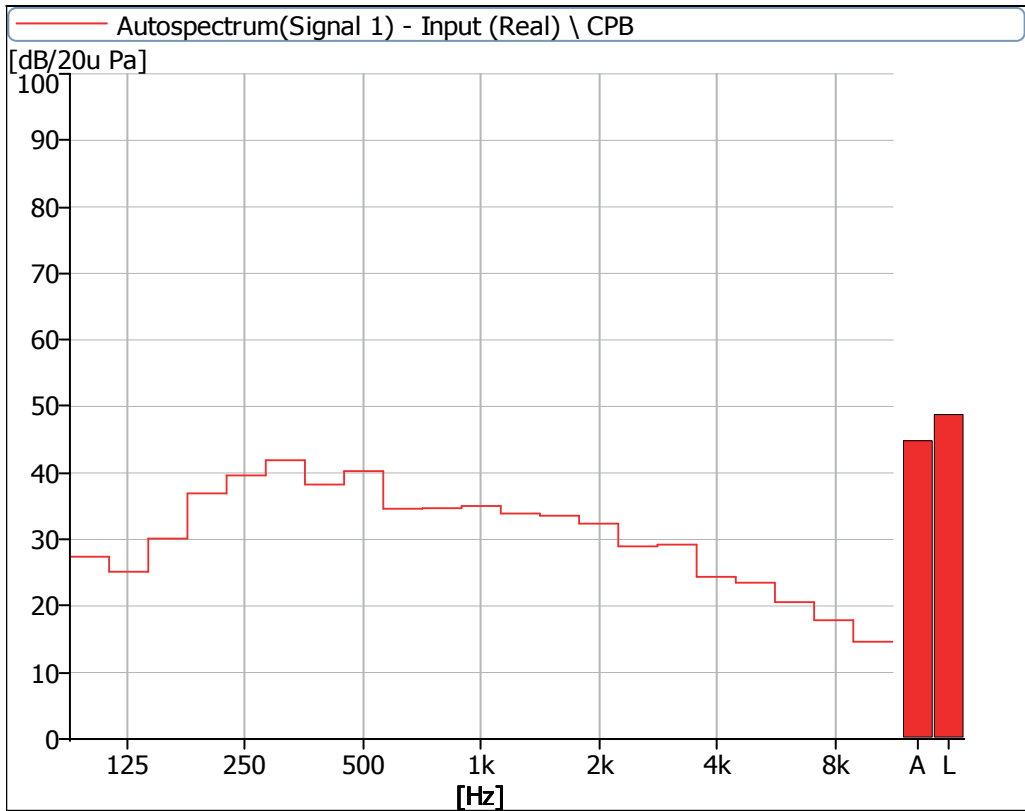
**Figure 20** Noise Spectrum of Stage Luminaires (The Silence mode, Static, No 2)



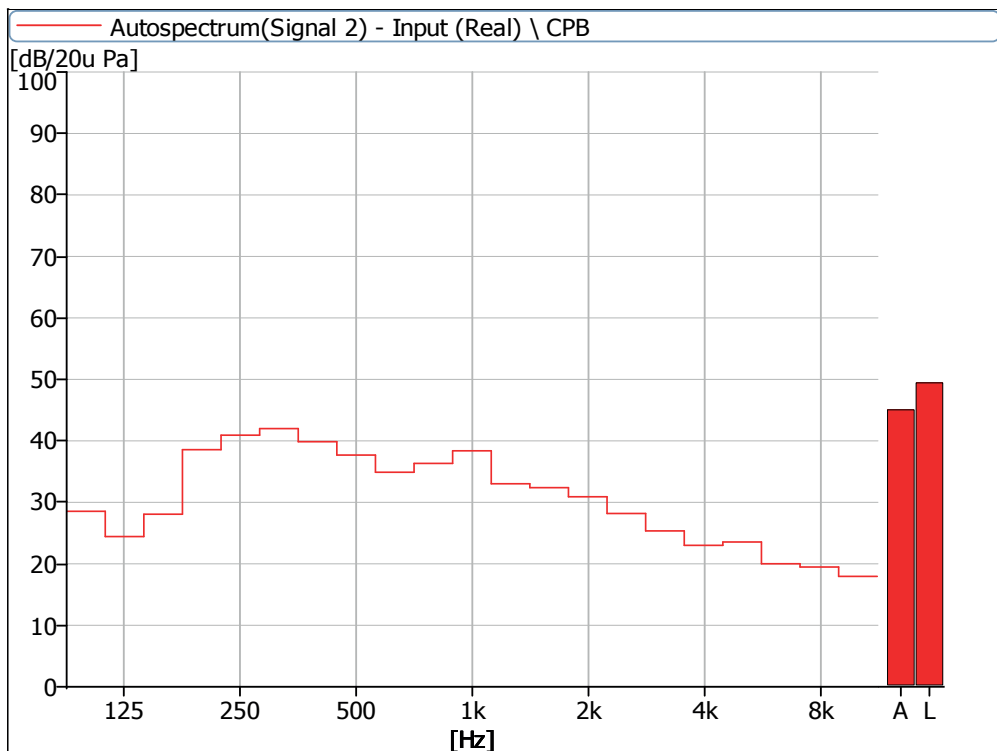
**Figure 21** Noise Spectrum of Stage Luminaires (The Silence mode, Static, No 3)



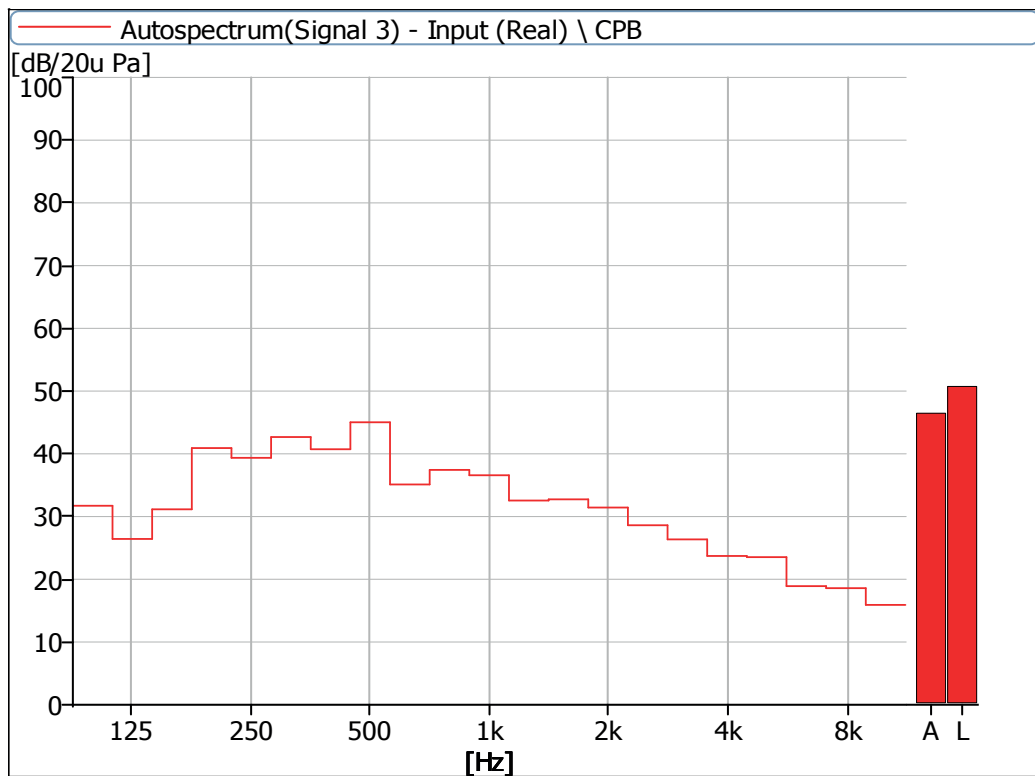
**Figure 22** Noise Spectrum of Stage Luminaires (The Silence mode, Static, No 4)



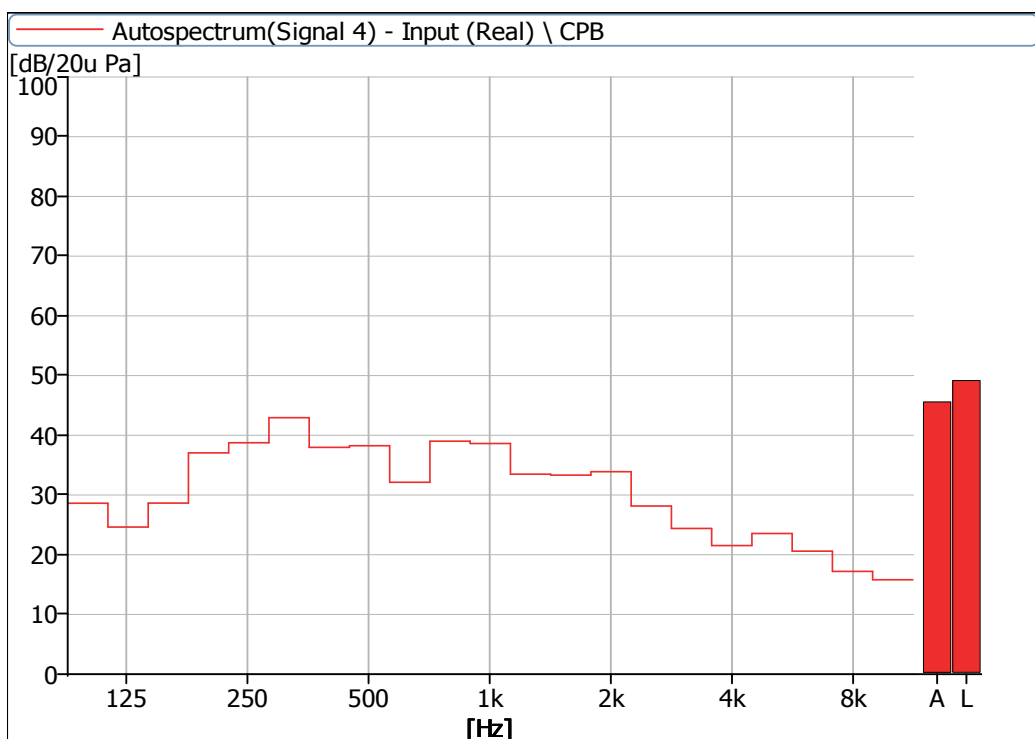
**Figure 23** Noise Spectrum of Stage Luminaires (The Silence mode, Dynamic, No 1)



**Figure 24** Noise Spectrum of Stage Luminaires (The Silence mode, Dynamic, No 2)



**Figure 25** Noise Spectrum of Stage Luminaires (The Silence mode, Dynamic, No 3)

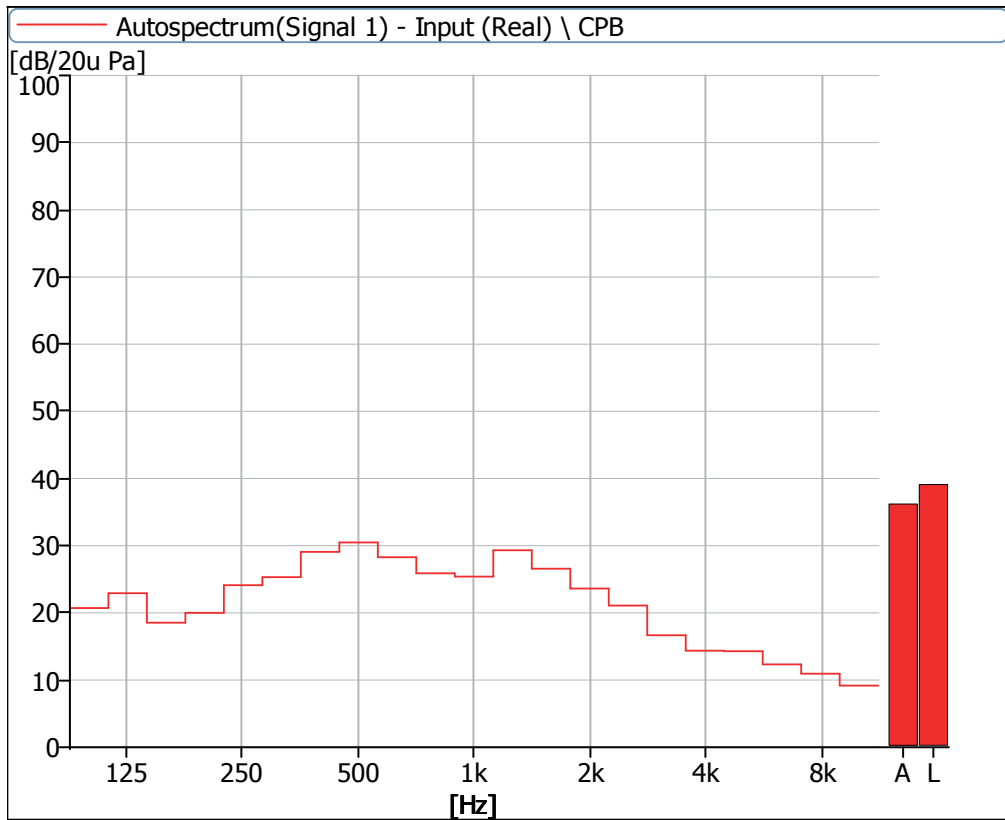


**Figure 26** Noise Spectrum of Stage Luminaires (The Silence mode, Dynamic, No 4)

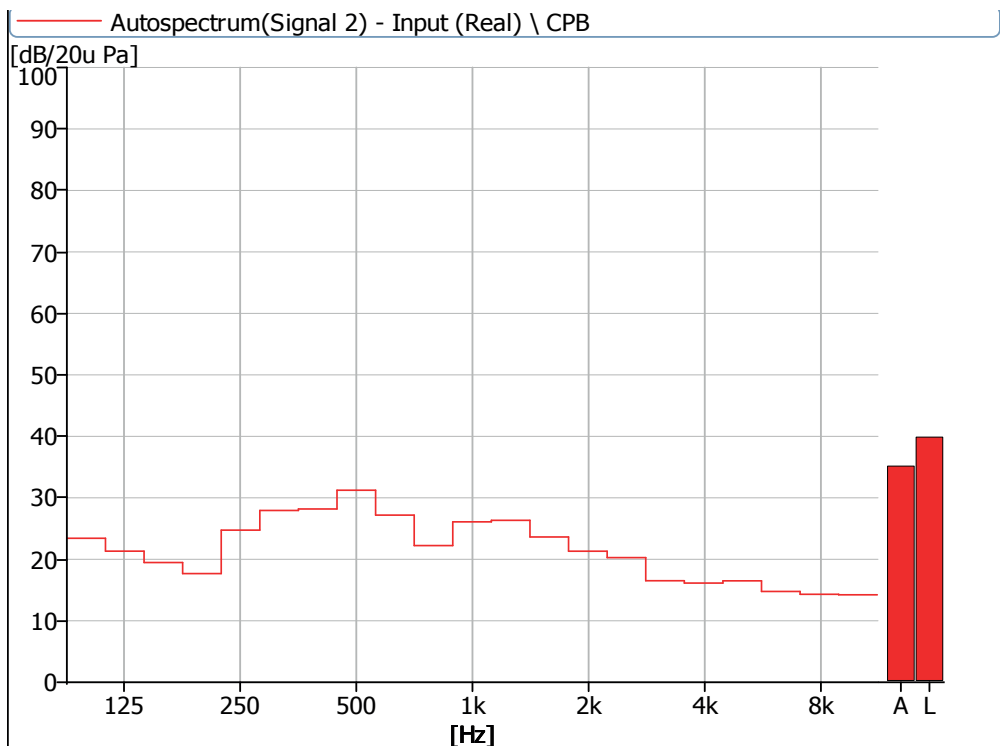
## 5 Noise Detection Results of Stage Luminaires (The Super Silence mode)

Frequency (Hz)	Sound Pressure Level in Super Silence Mode (dB)							
	Static				Dynamic			
	No 1	No 2	No 3	No 4	No 1	No 2	No 3	No 4
100	20.7	23.4	22.7	19.3	22.7	25.4	25.8	22.4
125	22.9	21.3	24.7	22.5	24.0	23.1	25.3	23.4
160	18.5	19.5	17.2	14.0	26.0	24.9	26.9	24.4
200	20.0	17.7	19.8	15.6	36.7	38.7	40.5	36.8
250	24.1	24.7	25.9	24.1	38.7	40.2	39.1	37.9
315	25.3	27.9	26.7	25.6	40.7	39.9	41.3	42.5
400	29.1	28.2	27.2	28.2	35.6	37.9	38.8	36.8
500	30.5	31.2	29.1	31.9	35.7	34.0	41.6	35.5
630	28.3	27.2	27.8	27.9	31.4	30.9	32.0	30.9
800	25.9	22.2	26.2	24.4	29.8	30.9	31.1	35.4
1000	25.4	26.1	24.4	24.6	32.3	35.6	33.8	35.7
1250	29.3	26.3	27.7	25.4	31.2	29.8	29.6	30.2
1600	26.6	23.6	26.5	25.5	29.9	28.7	29.5	29.1
2000	23.6	21.3	24.7	21.8	28.6	27.3	27.7	30.2
2500	21.1	20.3	21.0	20.1	25.1	24.7	24.9	24.4
3150	16.7	16.5	16.3	15.4	25.7	21.6	22.4	20.0
4000	14.4	16.1	14.5	15.3	20.5	19.1	19.1	17.1
5000	14.3	16.5	16.1	16.7	19.8	18.9	18.5	19.6
6300	12.3	14.8	10.8	11.9	16.9	16.8	14.7	17.7
8000	10.9	14.3	11.5	10.9	14.0	16.4	14.1	13.7
10000	9.2	14.2	9.8	9.7	10.3	15.7	11.3	12.3

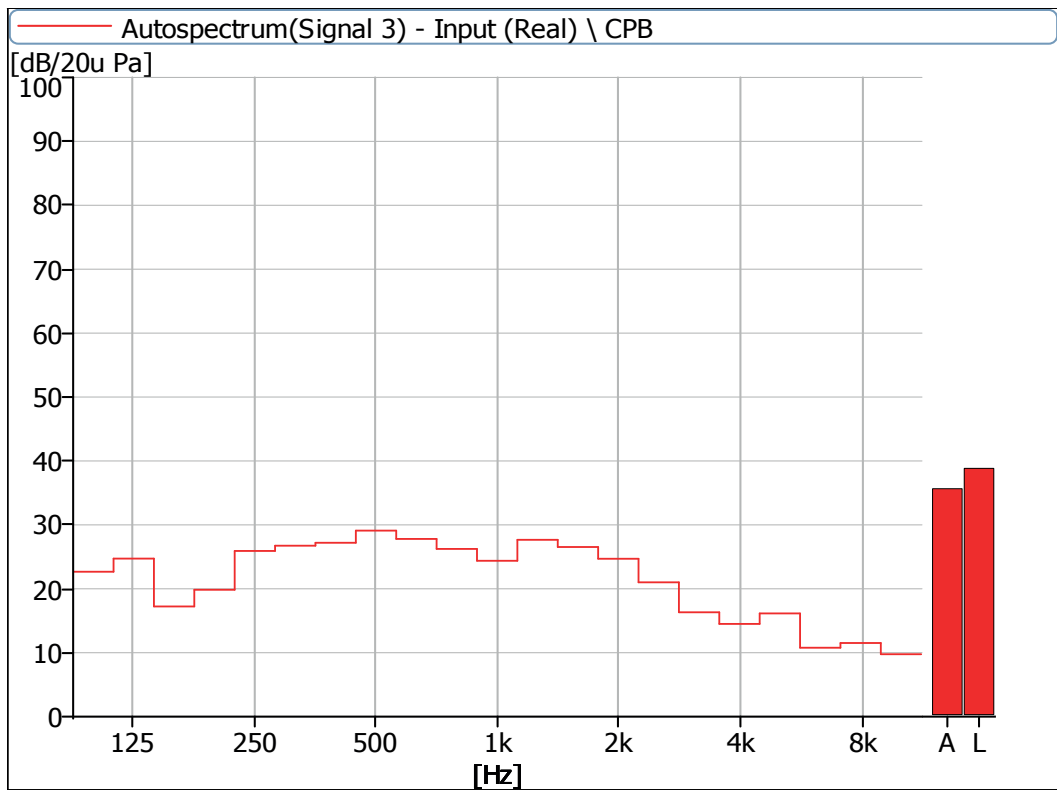
Frequency (Hz)	Sound Pressure Level in Super Silence Mode (dB)							
	Static				Dynamic			
	No 1	No 2	No 3	No 4	No 1	No 2	No 3	No 4
Leq	39.1	39.9	38.8	38.7	46.9	47.9	48.9	47.8
A-weighted dB(A)	36.2	35.2	35.7	35.3	41.8	42.1	43.5	43.1
Average sound pressure level dB(A)	35.6				42.7			



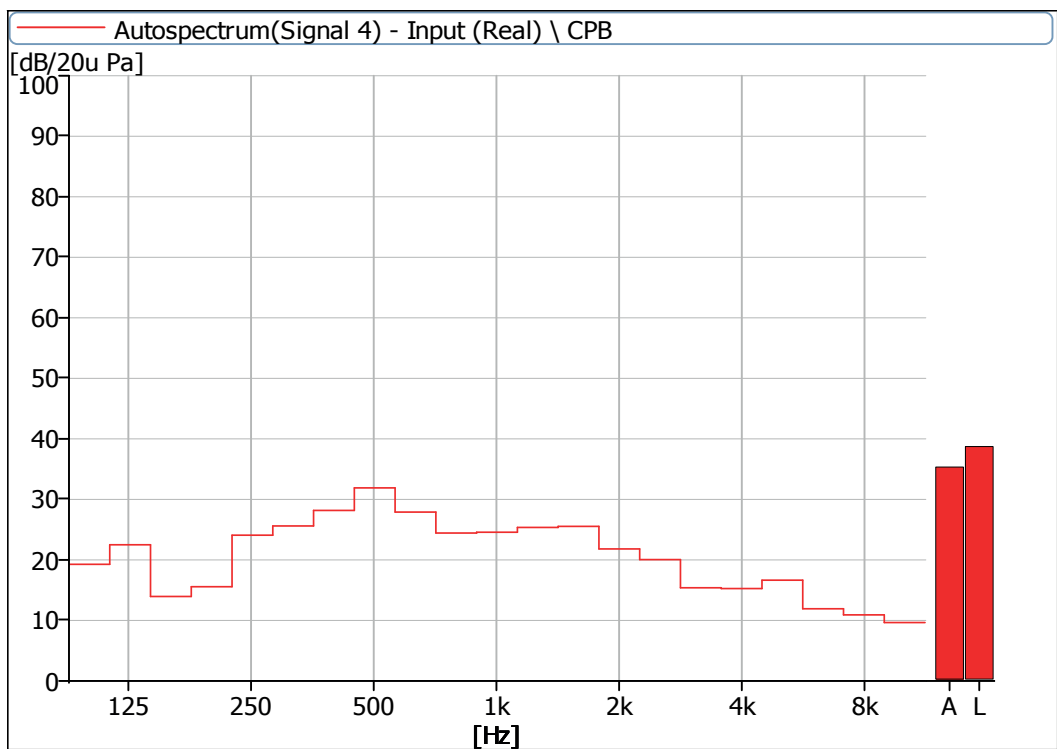
**Figure 27** Noise Spectrum of Stage Luminaires (The Super Silence mode, Static, No 1)



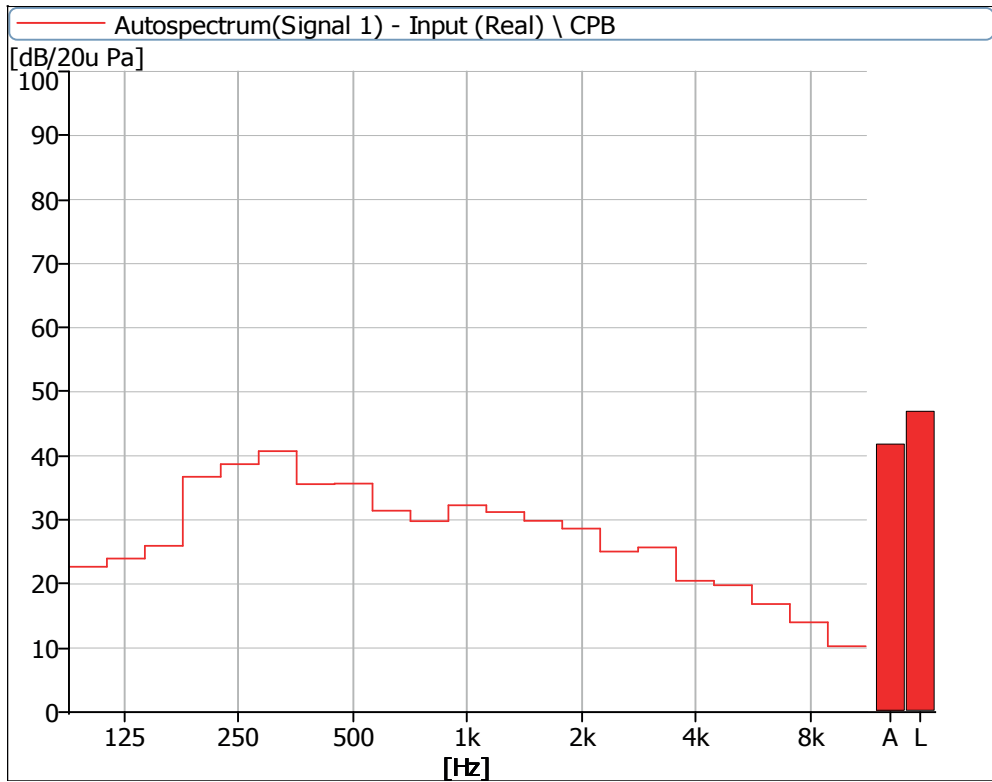
**Figure 28** Noise Spectrum of Stage Luminaires (The Super Silence mode, Static, No 2)



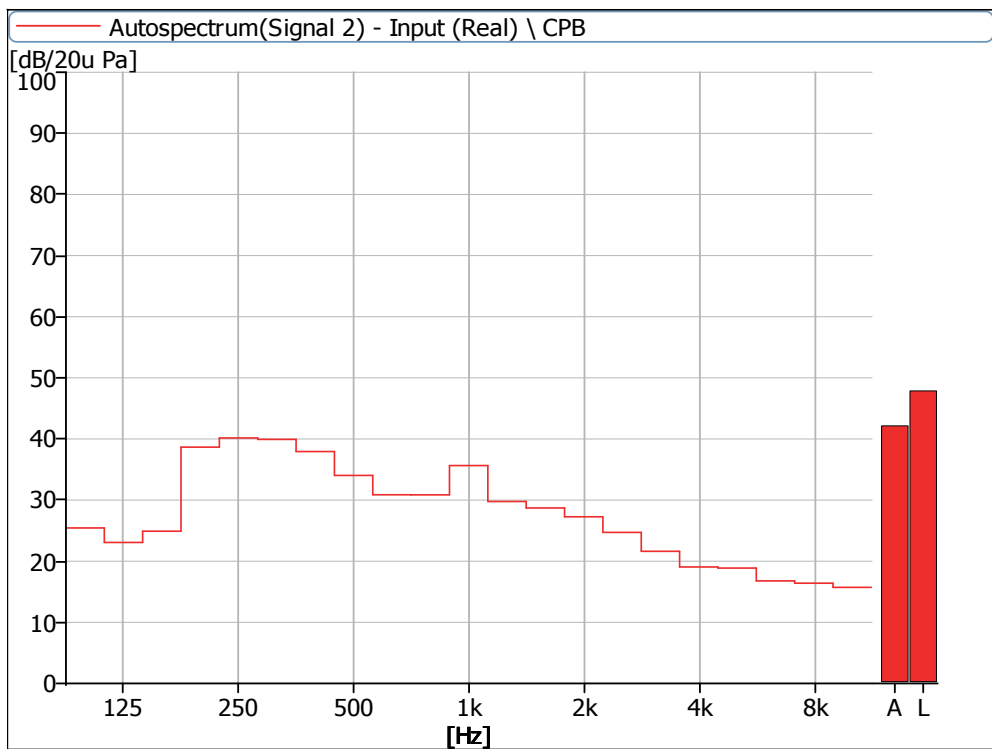
**Figure 29** Noise Spectrum of Stage Luminaires (The Super Silence mode, Static, No 3)



**Figure 30** Noise Spectrum of Stage Luminaires (The Super Silence mode, Static, No 4)



**Figure 31** Noise Spectrum of Stage Luminaires (The Super Silence mode, Dynamic, No 1)



**Figure 32** Noise Spectrum of Stage Luminaires (The Super Silence mode, Dynamic, No 2)

## Instrumentation

No	Equipment	Type	Number	Calibration Period
1	Anechoicrooms	-	R40010	2023.05
2	Noise Analyzer	3160-A-042	R40011-2	2022.05



**AYRTON**

Digital Lighting