



# COBRA

PHOTOMETRY



**AYRTON**  
Digital Lighting





<b>Total Flux</b>	8,621 lm (@zoom 128, Goniometer measurement, Fan mode stage)
-------------------	--

<b>CCT @ light source engine</b>	9000 K (±500 K)
----------------------------------	-----------------

<b>CCT @ open</b>	6500 K (±500 K)
-------------------	-----------------

<b>Ra @ open</b>	65 (±2)
------------------	---------

<b>TLCI</b>	36
-------------	----

<b>TM-30</b>	Rf: 62 Rg: 86
--------------	---------------

<b>Fan Mode</b>	<b>Noise Level (dBA)</b>	<b>by Goniometer (lm @ zoom 128)</b>
Auto	44.6	8,621
Stage	51.3	8,684
Silence	38.9	6,918
Super Silence	33.8	4,687

Note: noise measured @1m distance, static status, ambient 31 dBA.

<b>Voltage / Power</b>	100-240V, 50-60Hz	480 W
------------------------	-------------------	-------

<b>Fixture Dimension / Weight</b>	422 x 663 x 280 mm	33 kg
-----------------------------------	--------------------	-------

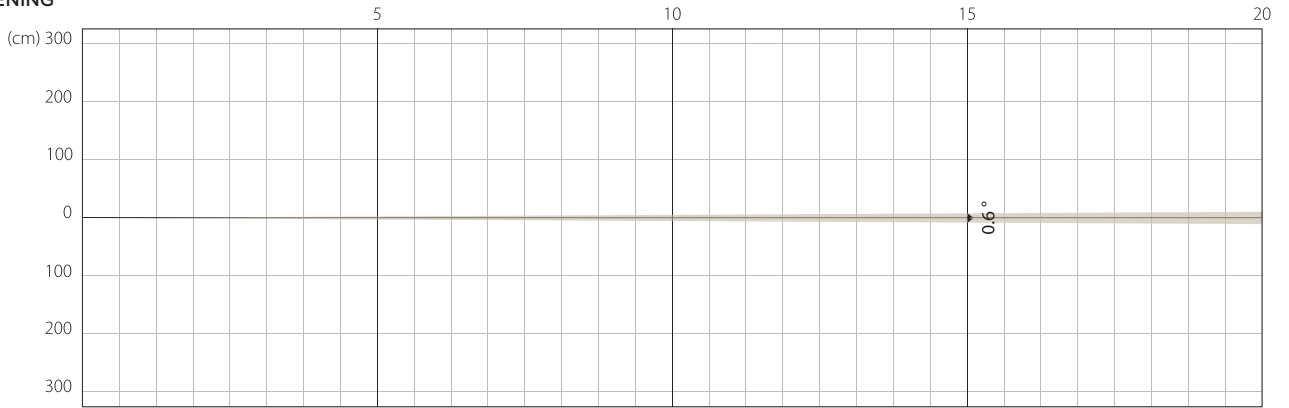
<b>Packing Dimension / Weight</b>	485 x 565 x 560 mm	45.5 kg
-----------------------------------	--------------------	---------

# AUTO MODE

## NATIVE CRI GREATER THAN 65

MIN ZOOM

BEAM OPENING

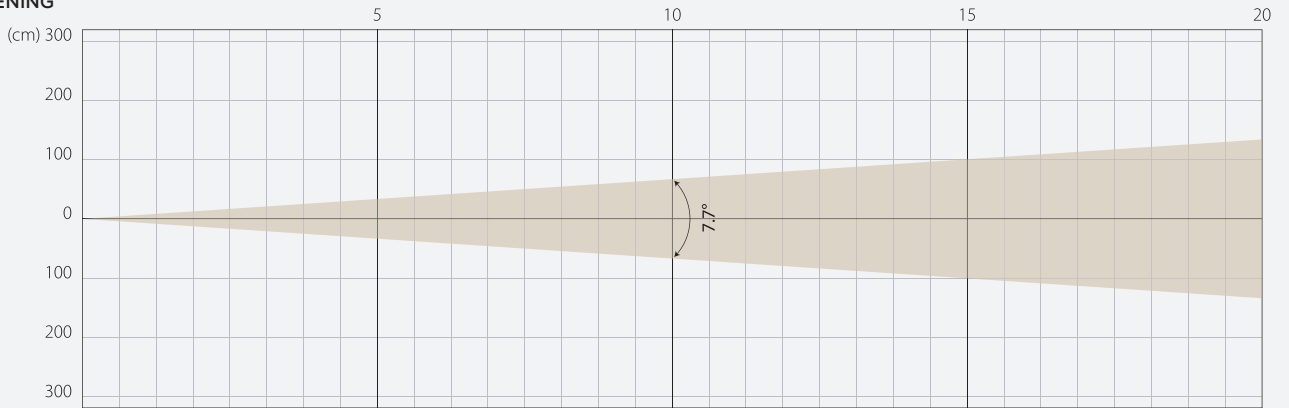


INTENSITY

Distance (m)	5		10		15		20		30		50		100	
unit	Lux	Diameter	Lux	Diameter	Lux	Diameter	Lux	Diameter	Lux	Diameter	Lux	Diameter	Lux	Diameter
White	6176000	0,05	1544000	0,1	686222	0,16	386000	0,21	171556	0,31	61760	0,52	15440	1,05

MIDDLE ZOOM

BEAM OPENING

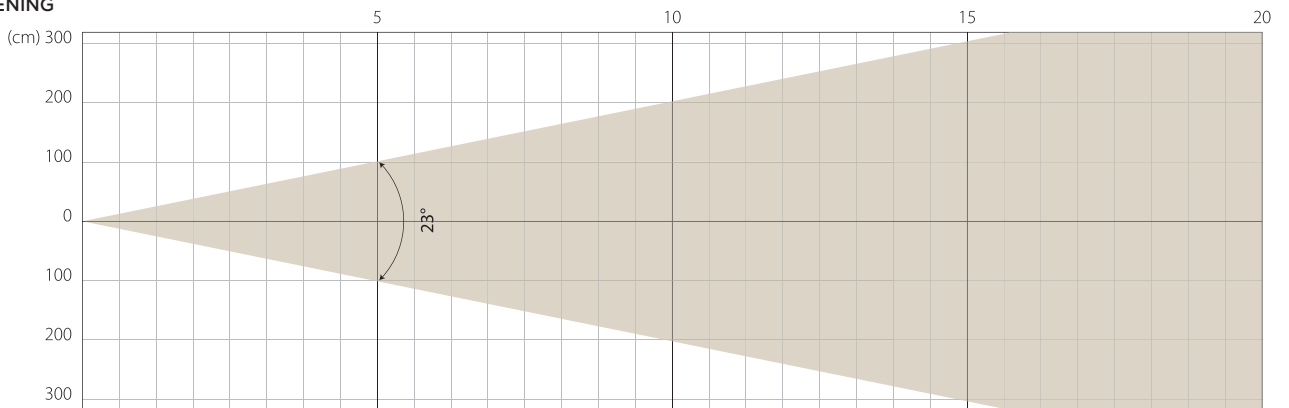


INTENSITY

Distance (m)	5		10		15		20	
unit	Lux	Diameter	Lux	Diameter	Lux	Diameter	Lux	Diameter
White	61496	0,67	15374	1,35	6833	2,02	3843	2,69

MAX ZOOM

BEAM OPENING



INTENSITY

Distance (m)	5		10		15		20	
unit	Lux	Diameter	Lux	Diameter	Lux	Diameter	Lux	Diameter
White	6765	2,03	1691	4,07	752	6,1	423	8,14

# STAGE MODE

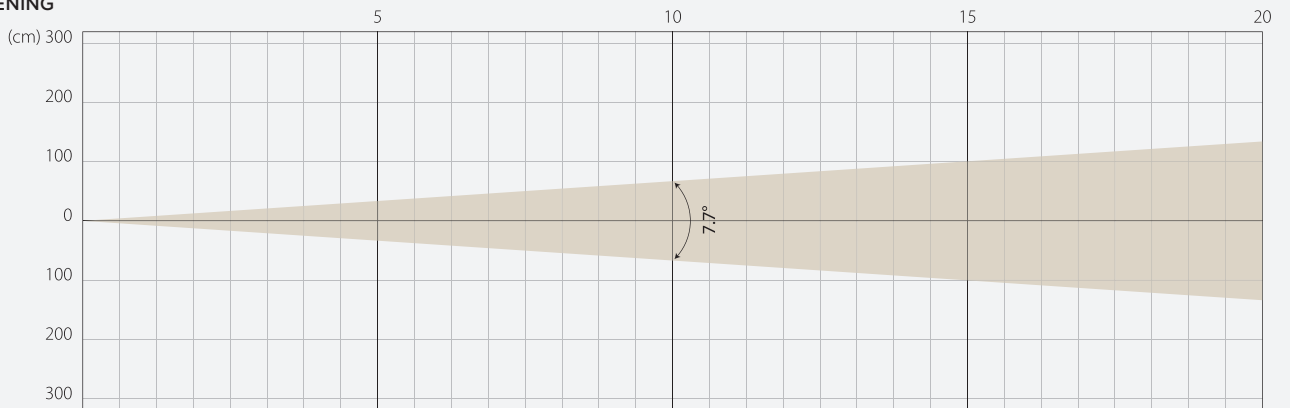
NATIVE CRI GREATER THAN 65

MIN ZOOM

MIDDLE ZOOM

MAX ZOOM

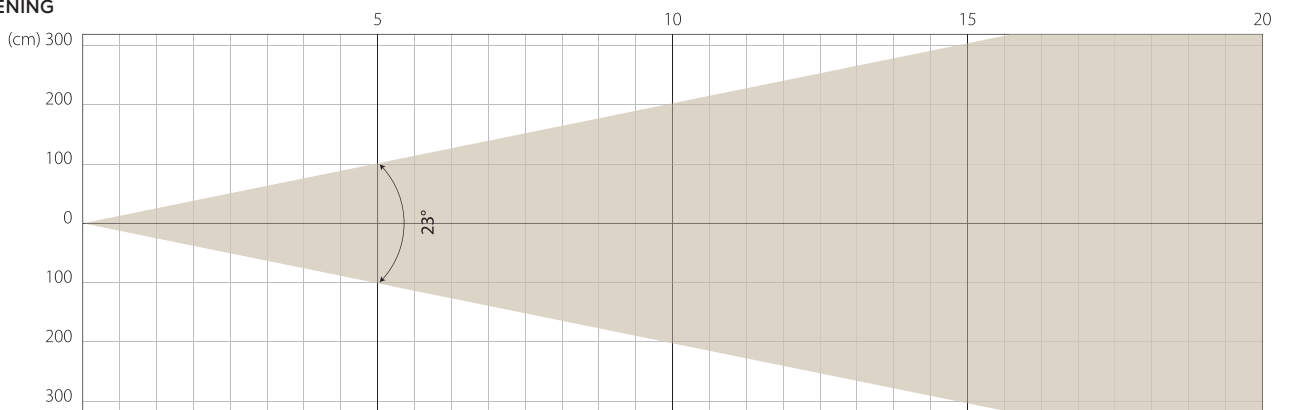
BEAM OPENING



INTENSITY

Distance (m)	5		10		15		20	
unit	Lux	Diameter	Lux	Diameter	Lux	Diameter	Lux	Diameter
White	62803	0,67	15701	1,35	6978	2,02	3925	2,69

BEAM OPENING



INTENSITY

Distance (m)	5		10		15		20	
unit	Lux	Diameter	Lux	Diameter	Lux	Diameter	Lux	Diameter
White	6881	2,03	1720	4,07	765	6,1	430	8,14

# SILENCE MODE

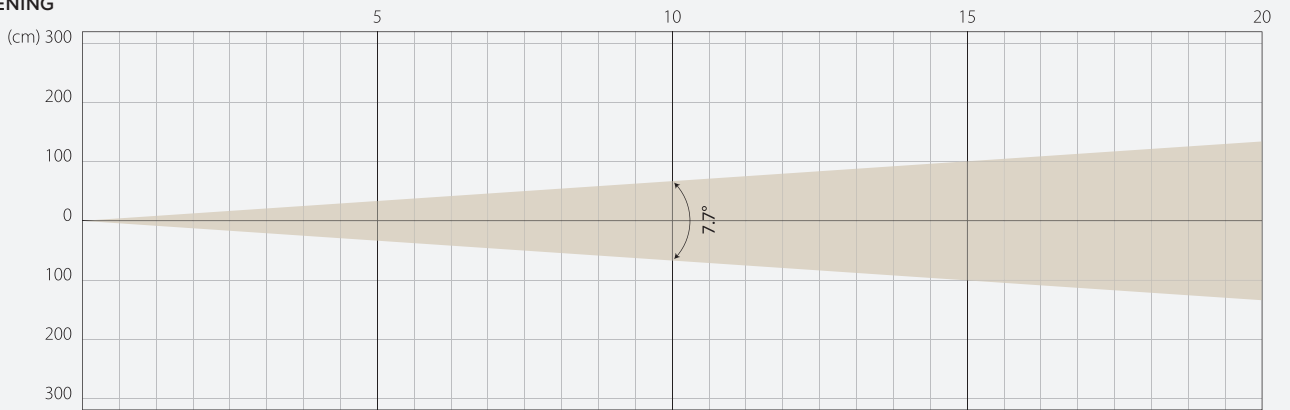
NATIVE CRI GREATER THAN 65

MIN ZOOM

MIDDLE ZOOM

MAX ZOOM

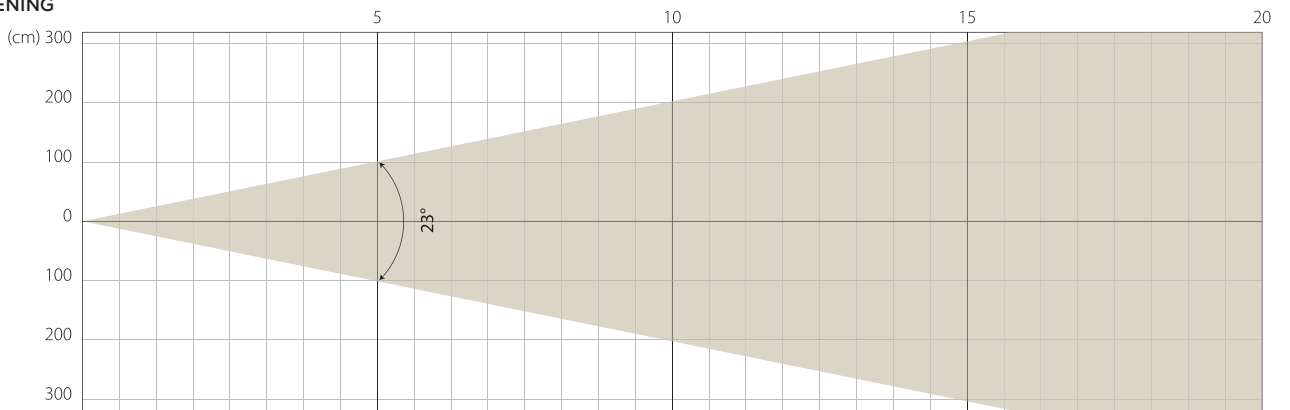
BEAM OPENING



INTENSITY

Distance (m)	5		10		15		20	
unit	Lux	Diameter	Lux	Diameter	Lux	Diameter	Lux	Diameter
White	35130	0,67	12647	1,35	5621	2,02	3162	2,69

BEAM OPENING



INTENSITY

Distance (m)	5		10		15		20	
unit	Lux	Diameter	Lux	Diameter	Lux	Diameter	Lux	Diameter
White	5456	2,03	1364	4,07	606	6,1	341	8,14

# SUPER SILENCE MODE

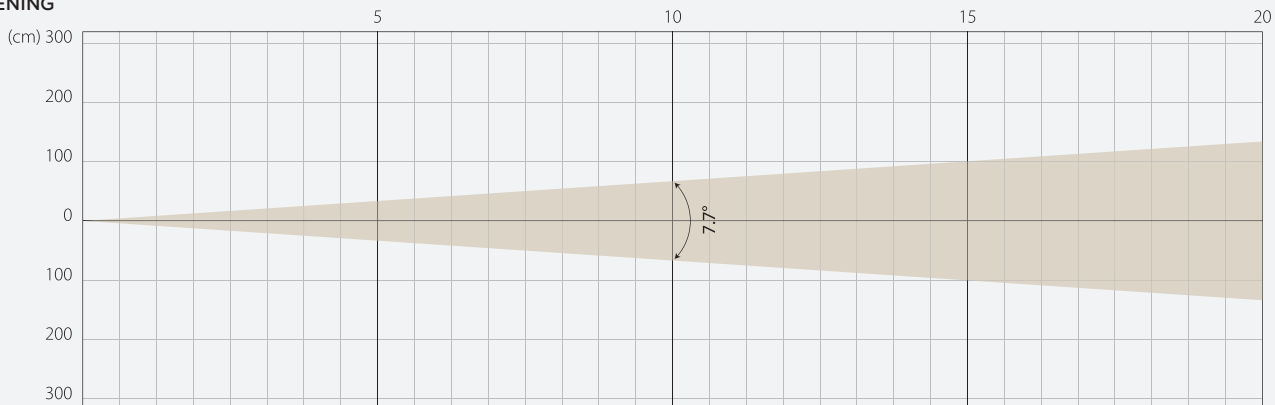
NATIVE CRI GREATER THAN 65

MIN ZOOM

MIDDLE ZOOM

MAX ZOOM

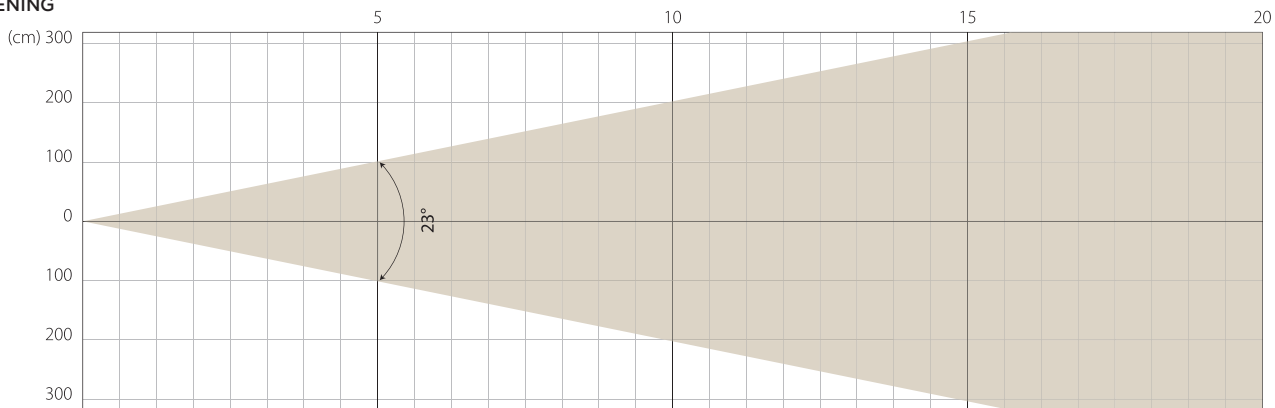
BEAM OPENING



INTENSITY

Distance (m)	5		10		15		20	
unit	Lux	Diameter	Lux	Diameter	Lux	Diameter	Lux	Diameter
White	32142	0,67	8035	1,35	3571	2,02	2009	2,69

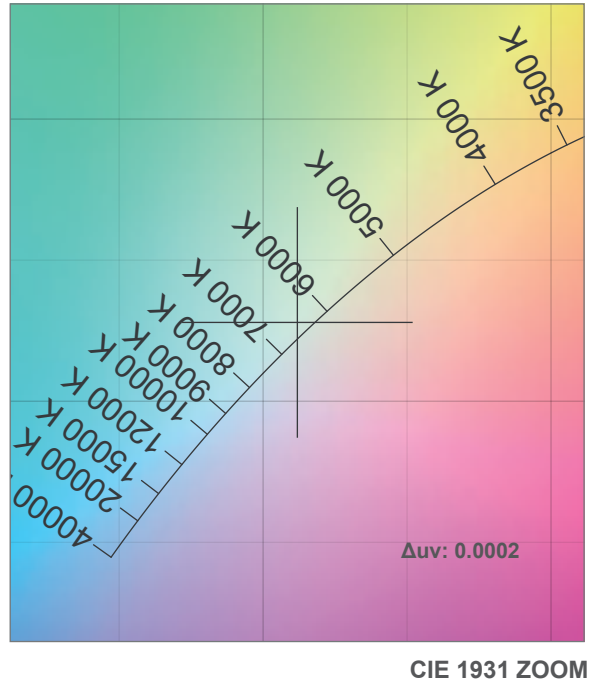
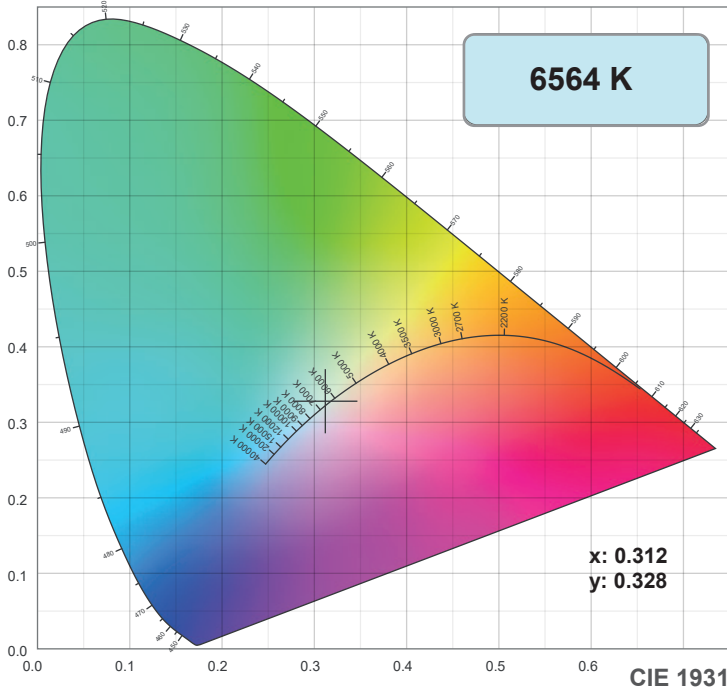
BEAM OPENING



INTENSITY

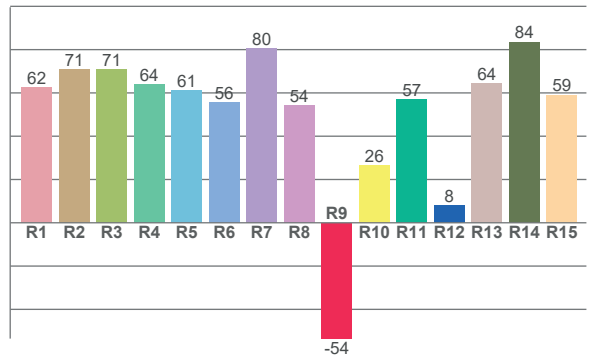
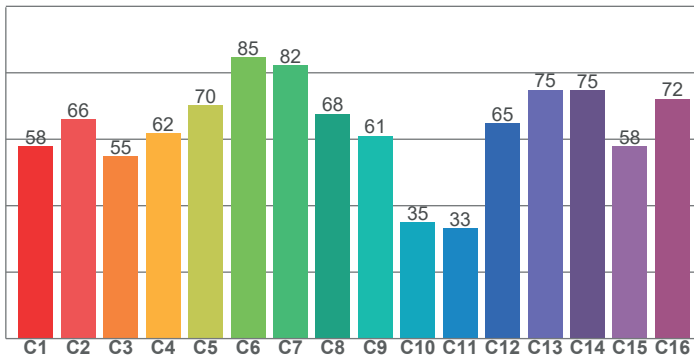
Distance (m)	5		10		15		20	
unit	Lux	Diameter	Lux	Diameter	Lux	Diameter	Lux	Diameter
White	3514	2,03	879	4,07	390	6,1	220	8,14

# COLOR DETAILS



**TM-30: 62.9**

**CRI: 65.0 (R1-R8)**



CRI R values, only R1-R8 are used to calculate final CRI value

R1	R2	R3	R4	R5	R6	R7	R8	R9	R10	R11	R12	R13	R14	R15
62.4	71.0	70.9	64.1	61.0	55.8	80.5	54.1	-53.5	26.4	57.1	7.9	64.4	83.6	59.1

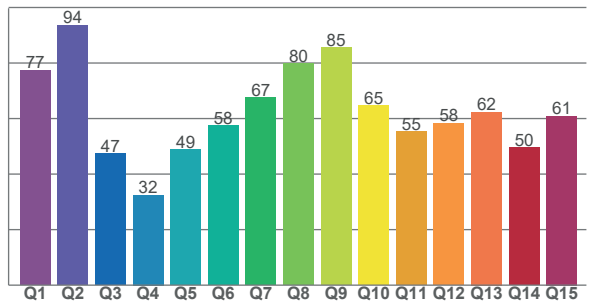
TM30 C values, 16 binned values out of total of 99 C values

C1	C2	C3	C4	C5	C6	C7	C8	C9	C10	C11	C12	C13	C14	C15	C16
57.8	66.0	54.8	61.8	70.2	84.7	82.3	67.6	61.0	35.0	33.2	64.8	74.9	74.7	57.9	72.2

CQS Q values

Q1	Q2	Q3	Q4	Q5	Q6	Q7	Q8	Q9	Q10	Q11	Q12	Q13	Q14	Q15
77.4	93.6	47.4	32.5	48.8	57.5	67.5	79.8	85.5	64.7	55.4	58.3	62.4	49.5	60.9

**CQS: 59.6**



## Color parameters

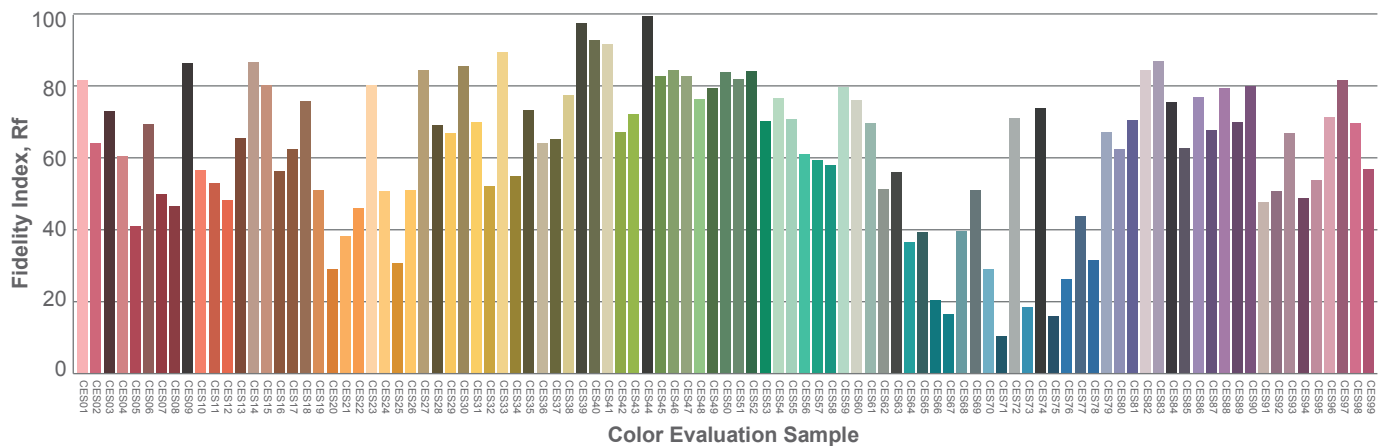
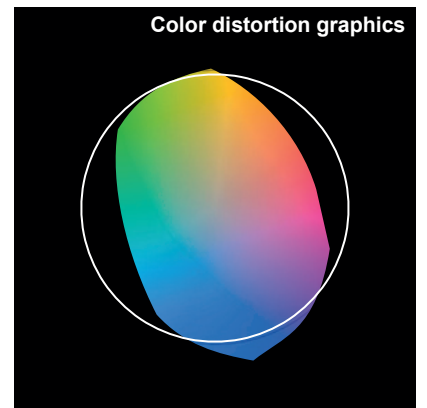
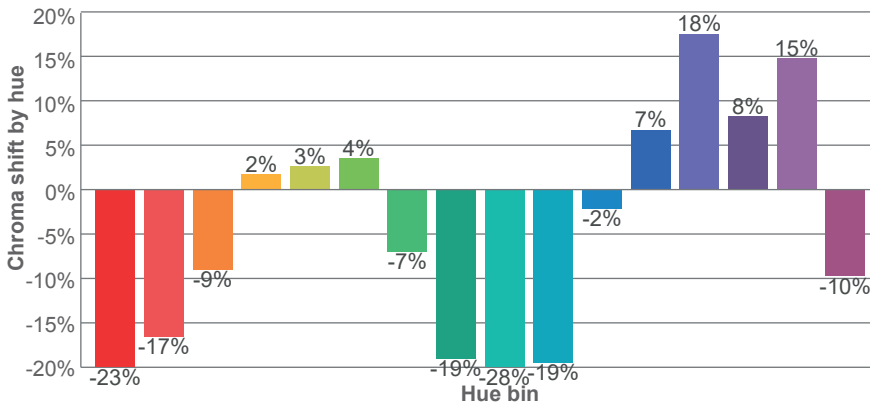
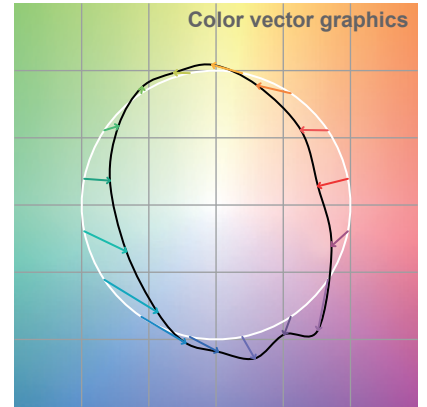
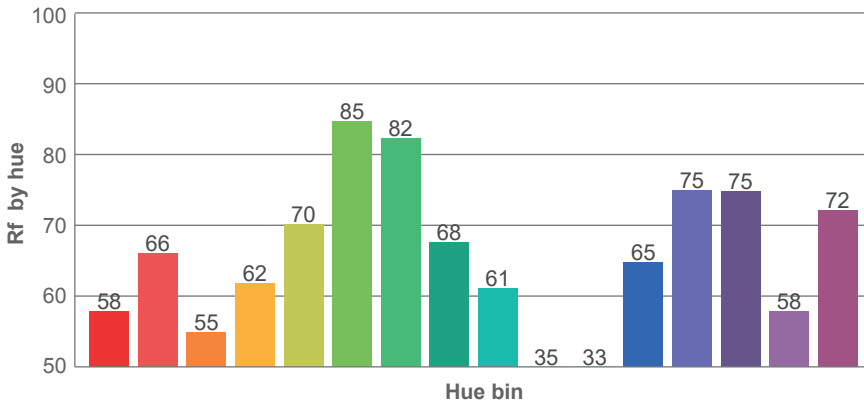
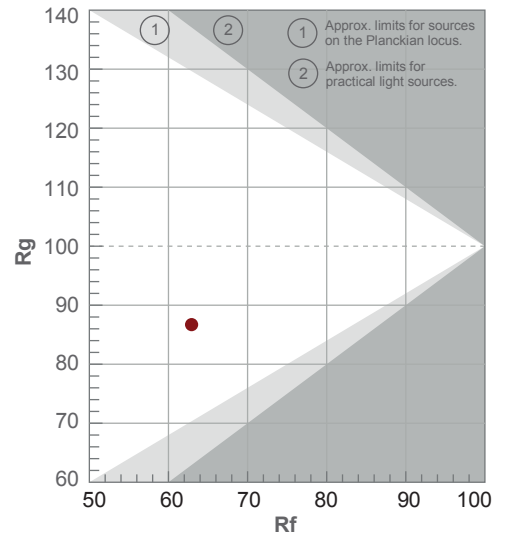
Color temperature	Color rendering index	Red component	Color fidelity	Color gamut	Color quality scale	Color coordinate cie 1931	Color coordinate cie 1931	Color coordinate	Color coordinate	Color deviation from black body
CCT	CRI	CRI R9	TM30 Rf	TM30 Rg	CQS	x	y	u	v	Δuv
6564 K	65.0	-53.5	62.9	86.7	59.6	0.312	0.328	0.198	0.312	0.0002

# TM-30 DETAILS

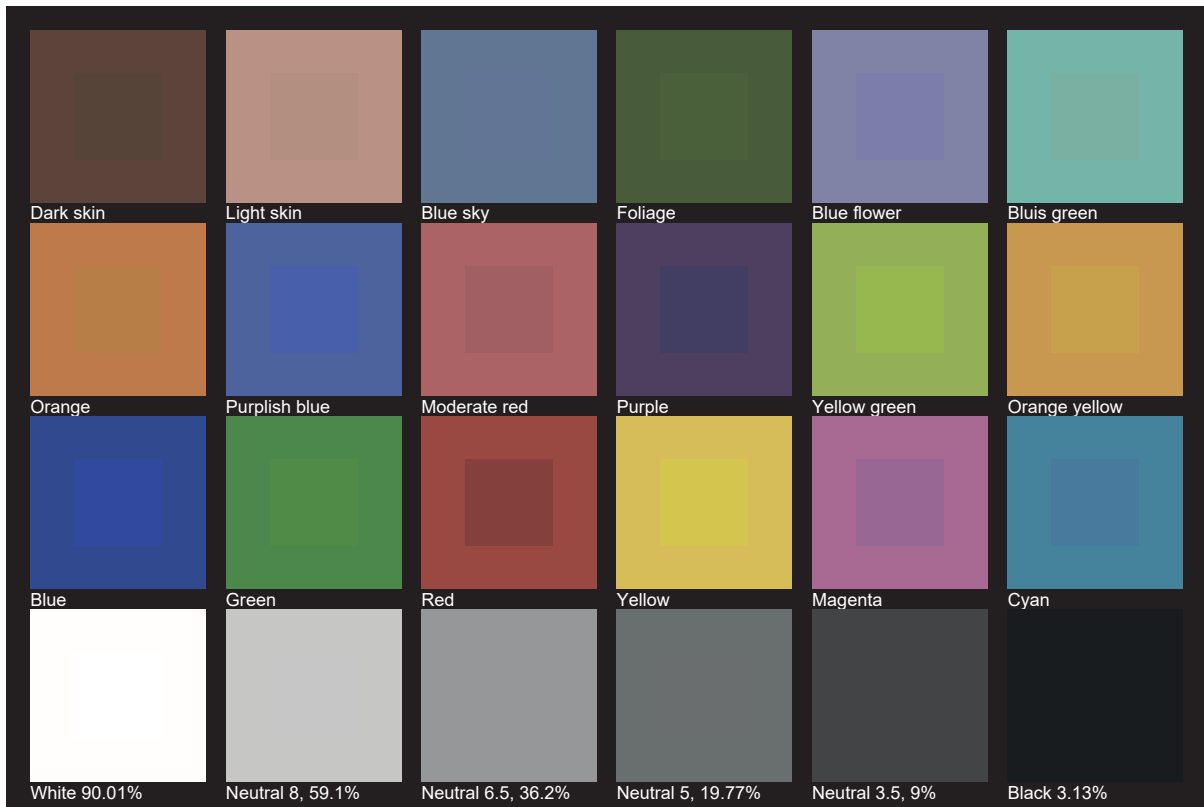
**Rf 62.9**  
Fidelity index Rf

**Rg 86.7**  
Gamut index Rg

Hue Bin	R <sub>f</sub>	Shifts (%)	
		Chroma	Hue
1	58	-23%	-1%
2	66	-17%	11%
3	55	-9%	24%
4	62	2%	23%
5	70	3%	11%
6	85	4%	-3%
7	82	-7%	-9%
8	68	-19%	-2%
9	61	-28%	21%
10	35	-19%	42%
11	33	-2%	38%
12	65	7%	23%
13	75	18%	6%
14	75	8%	-11%
15	58	15%	-35%
16	72	-10%	-13%



# TLCI 48







**AYRTON**

Digital Lighting