



# MISTRAL S

PHOTOMETRY



**AYRTON**  
Digital Lighting





<b>Total Flux</b>	18979 lm (@zoom 128, integrating sphere measurement, Fan mode auto)
-------------------	---

<b>CCT @LED engin</b>	8000 (±500K)
<b>CCT @open</b>	7000 (±500K)
<b>Ra @open</b>	70 (±2)
<b>TLCI</b>	47
<b>TM-30</b>	Rf: 71.1 Rg: 93.0

<b>Fan Mode</b>	<b>Noise Level (dBA)</b>	<b>by Goniometer (lm)</b>	<b>by Sphere (lm)</b>
<b>Auto</b>	43,6	14900	18791
<b>Stage</b>	45,8	15042	18979
<b>Silence</b>	38,3	9525	14253
<b>Super Silence</b>	34,5	7245	10771

Note: noise measured @1m distance, static status, ambient 31 dBA.

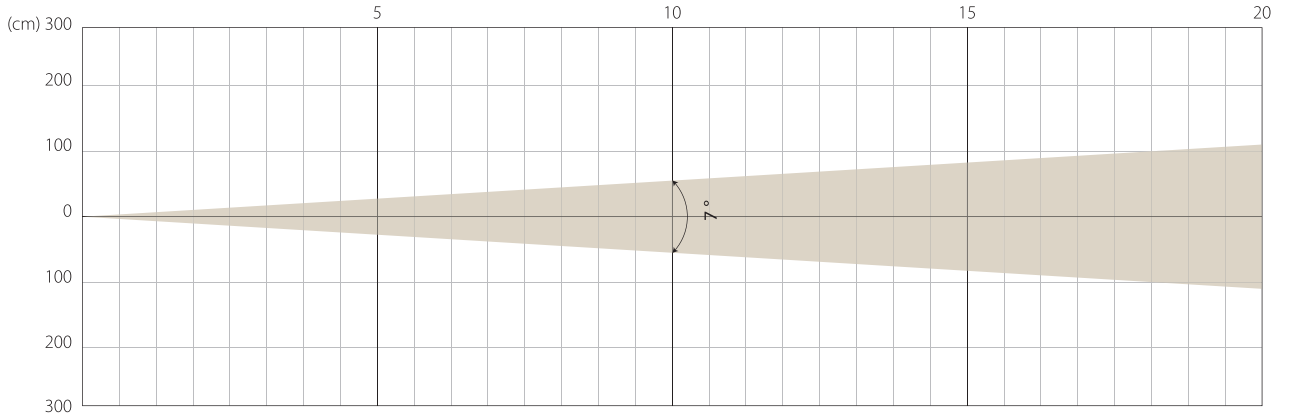
<b>Voltage / Power</b>	100-240V, 50-60Hz	550 W
<b>Fixture Dimension / Weight</b>	365 x 591 x 212 mm	19 kg
<b>Packing Dimension / Weight</b>	455 x 705 x 285 mm	28.5 kg

# AUTO MODE

NATIVE CRI GREATER THAN 70

MIN ZOOM

## Beam Opening

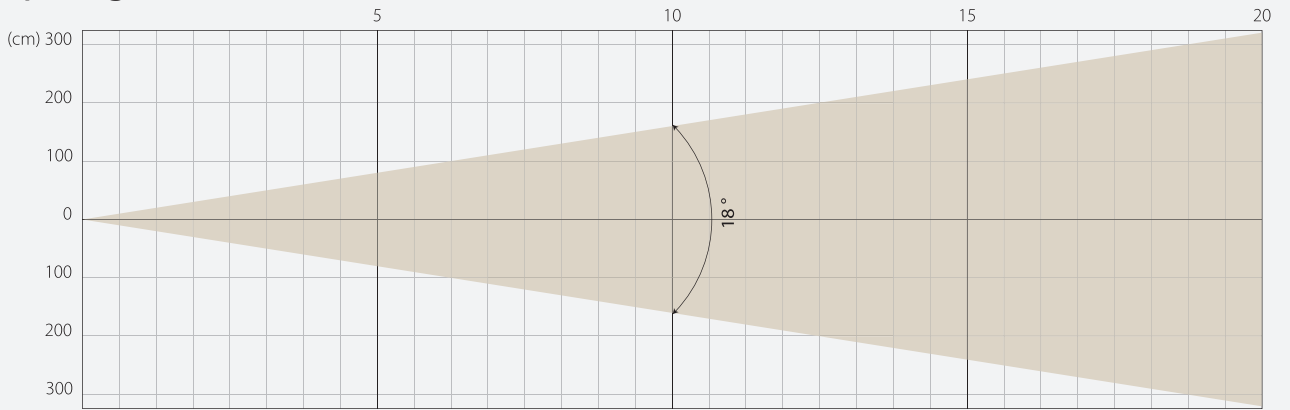


## Intensity

Distance (m)	5		10		15		20	
unit	lux	diameter	lux	diameter	lux	diameter	lux	diameter
White	35006	0,61	8751	1,22	3890	1,83	2188	2,45

MIDDLE ZOOM

## Beam Opening

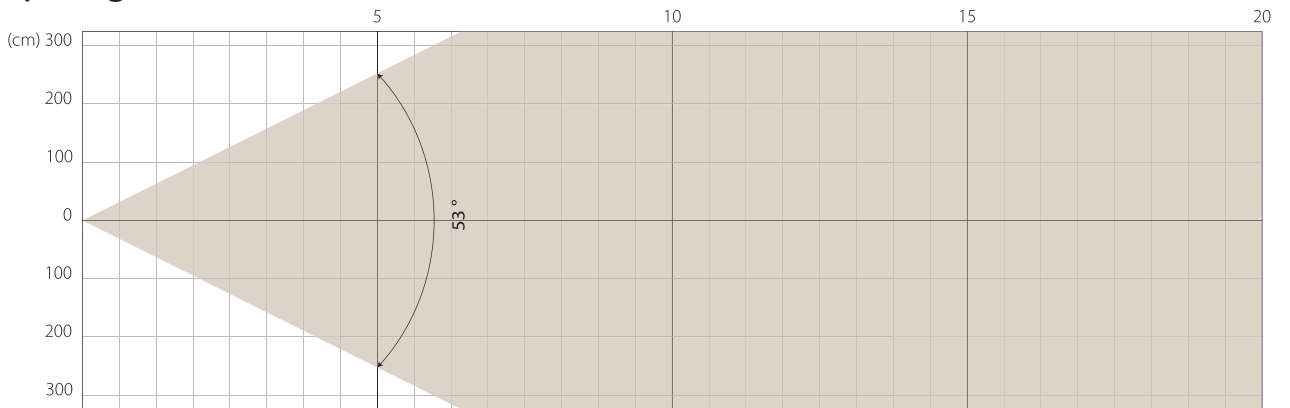


## Intensity

Distance (m)	5		10		15		20	
unit	lux	diameter	lux	diameter	lux	diameter	lux	diameter
White	8053	1,58	2013	3,17	1027	4,75	503	6,34

MAX ZOOM

## Beam Opening



## Intensity

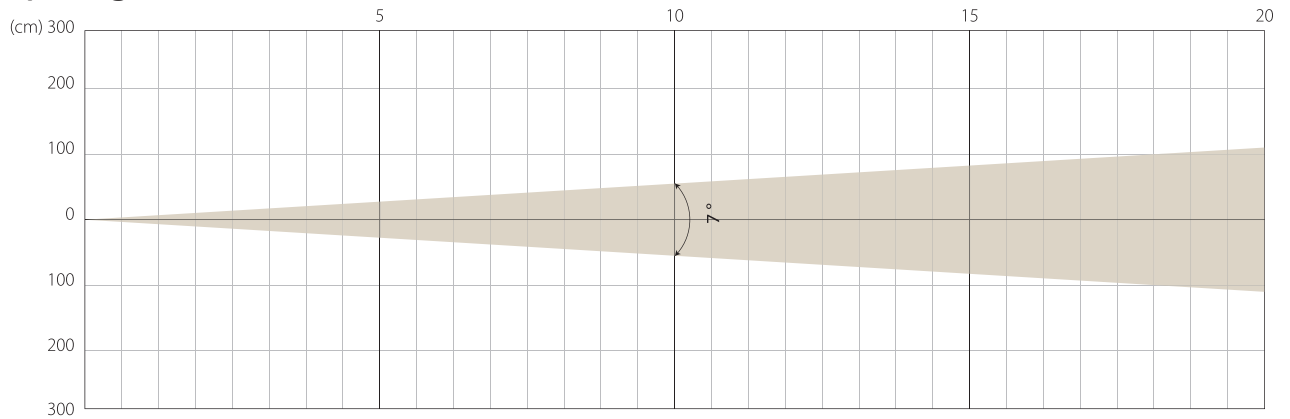
Distance (m)	5		10		15		20	
unit	lux	diameter	lux	diameter	lux	diameter	lux	diameter
White	1495	4,99	374	9,97	166	14,96	93	19,94

# STAGE MODE

NATIVE CRI GREATER THAN 70

MIN ZOOM

## Beam Opening

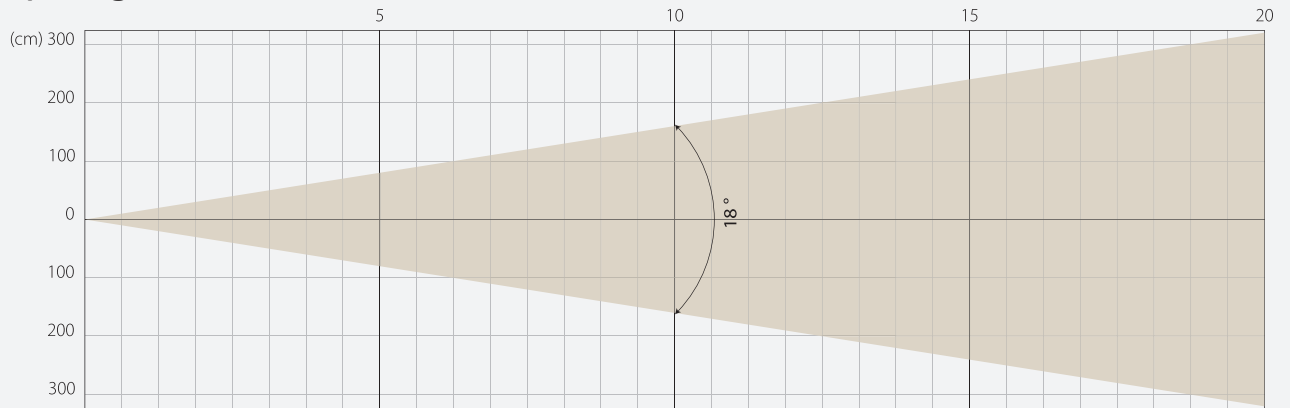


## Intensity

Distance (m)	5		10		15		20	
unit	lux	diameter	lux	diameter	lux	diameter	lux	diameter
White	36132	0,61	9033	1,22	4015	1,83	2258	2,45

MIDDLE ZOOM

## Beam Opening

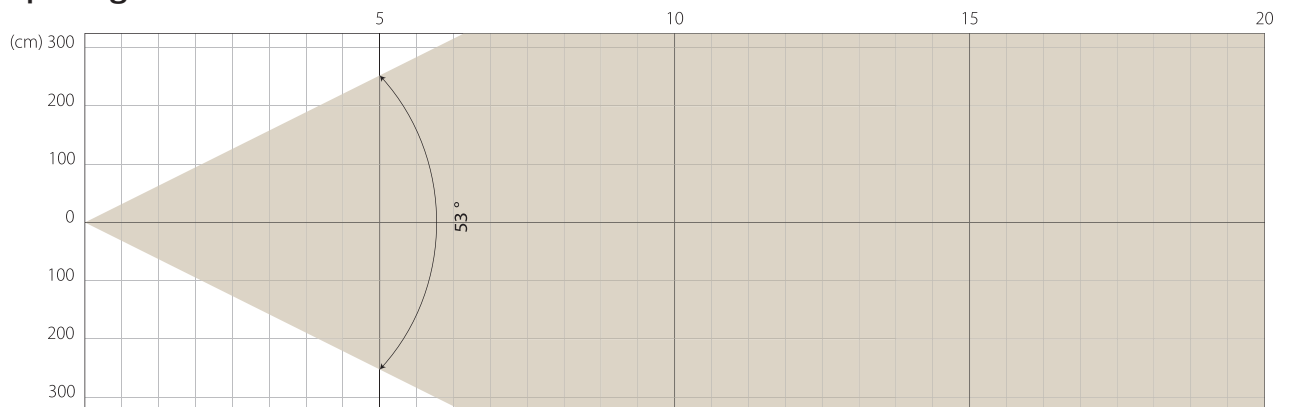


## Intensity

Distance (m)	5		10		15		20	
unit	lux	diameter	lux	diameter	lux	diameter	lux	diameter
White	7891	1,58	1973	3,17	877	4,75	493	6,34

MAX ZOOM

## Beam Opening

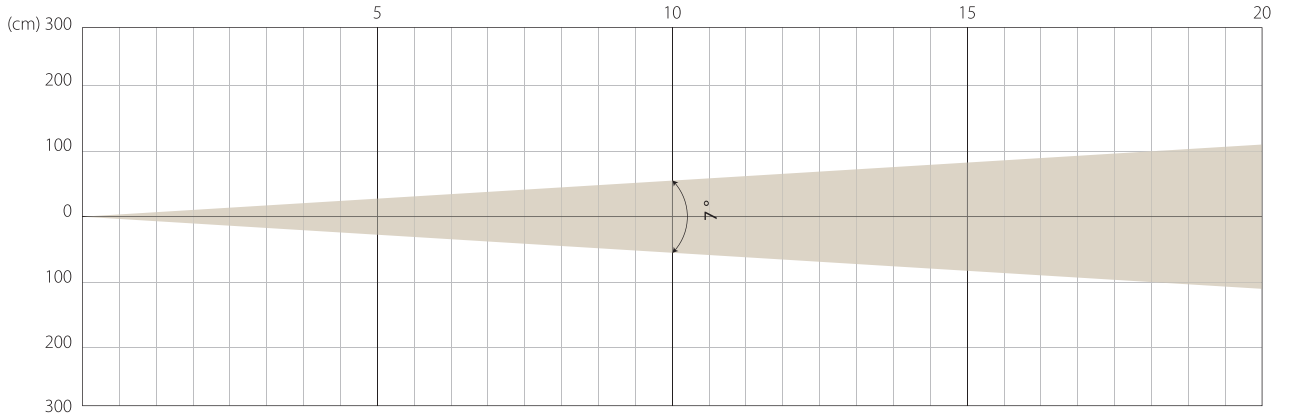


## Intensity

Distance (m)	5		10		15		20	
unit	lux	diameter	lux	diameter	lux	diameter	lux	diameter
White	1505	4,99	376	9,97	167	14,96	94	19,94

MIN ZOOM

## Beam Opening

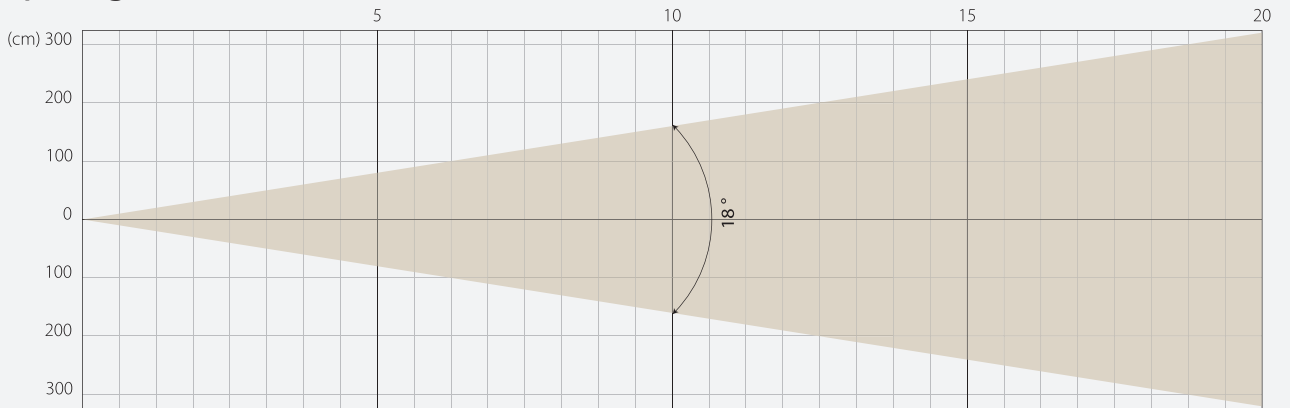


## Intensity

Distance (m)	5		10		15		20	
unit	lux	diameter	lux	diameter	lux	diameter	lux	diameter
White	22388	0,61	5597	1,22	2488	1,83	1399	2,45

MIDDLE ZOOM

## Beam Opening

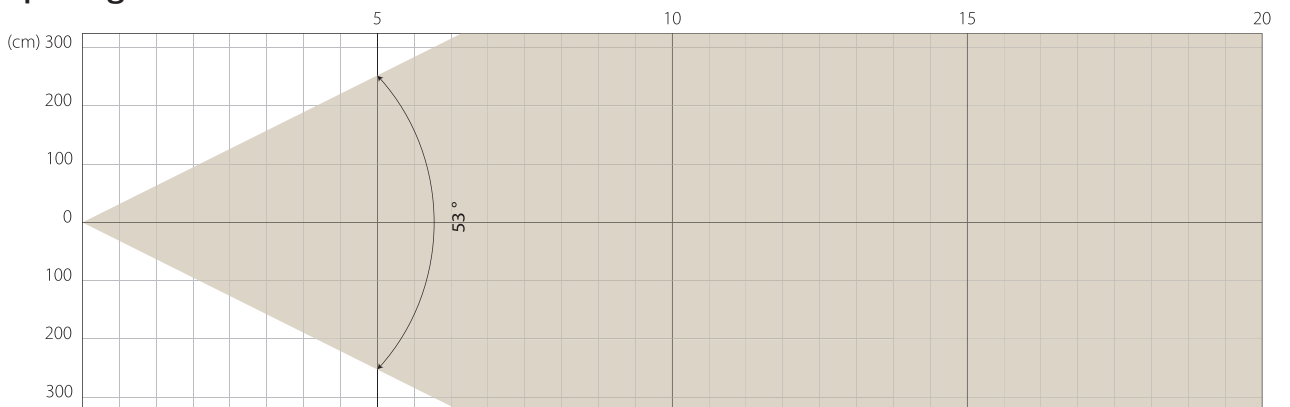


## Intensity

Distance (m)	5		10		15		20	
unit	lux	diameter	lux	diameter	lux	diameter	lux	diameter
White	4966	1,58	1241	3,17	552	4,75	310	6,34

MAX ZOOM

## Beam Opening



## Intensity

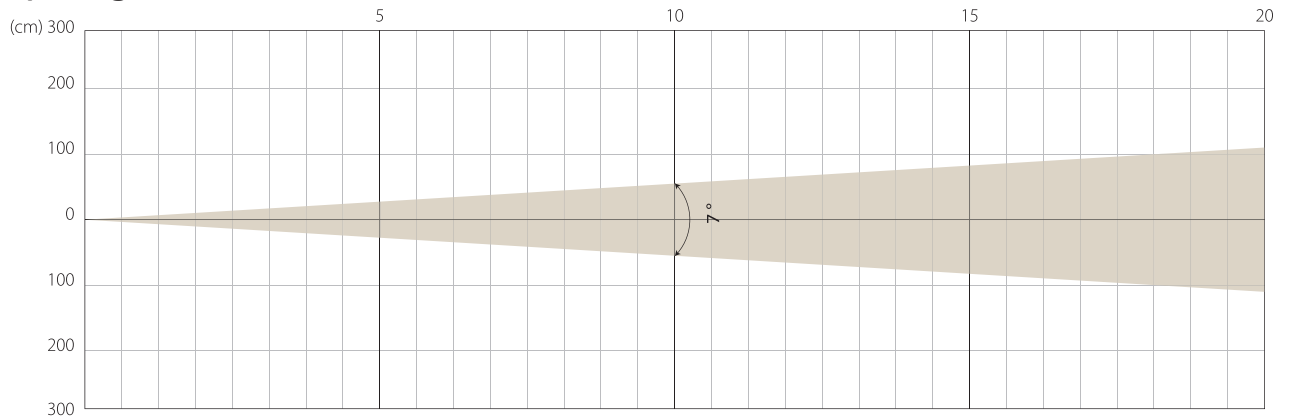
Distance (m)	5		10		15		20	
unit	lux	diameter	lux	diameter	lux	diameter	lux	diameter
White	946	4,99	236	9,97	105	14,96	59	19,94

# SUPER SILENCE MODE

NATIVE CRI GREATER THAN 70

MIN ZOOM

## Beam Opening

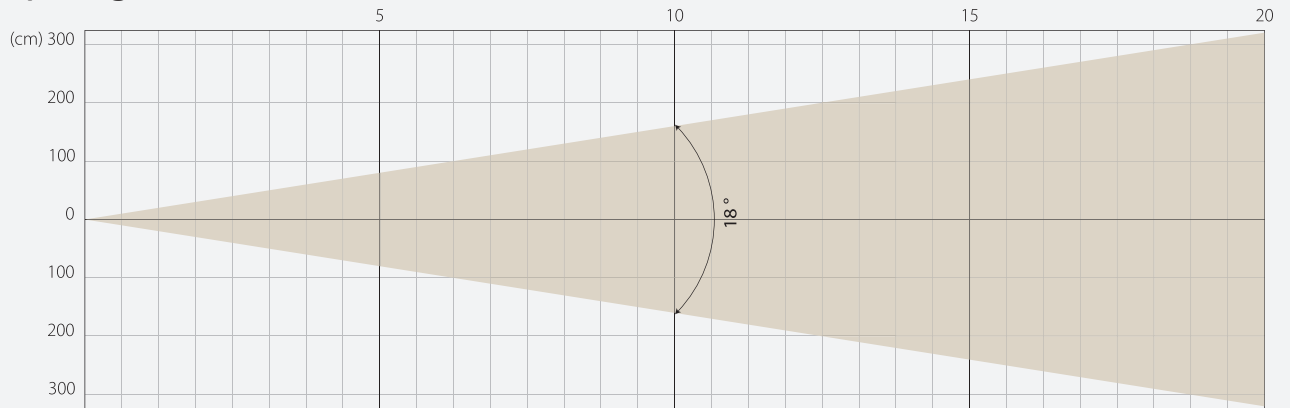


## Intensity

Distance (m)	5		10		15		20	
unit	lux	diameter	lux	diameter	lux	diameter	lux	diameter
White	16884	0,61	4221	1,22	1876	1,83	1055	2,45

MIDDLE ZOOM

## Beam Opening

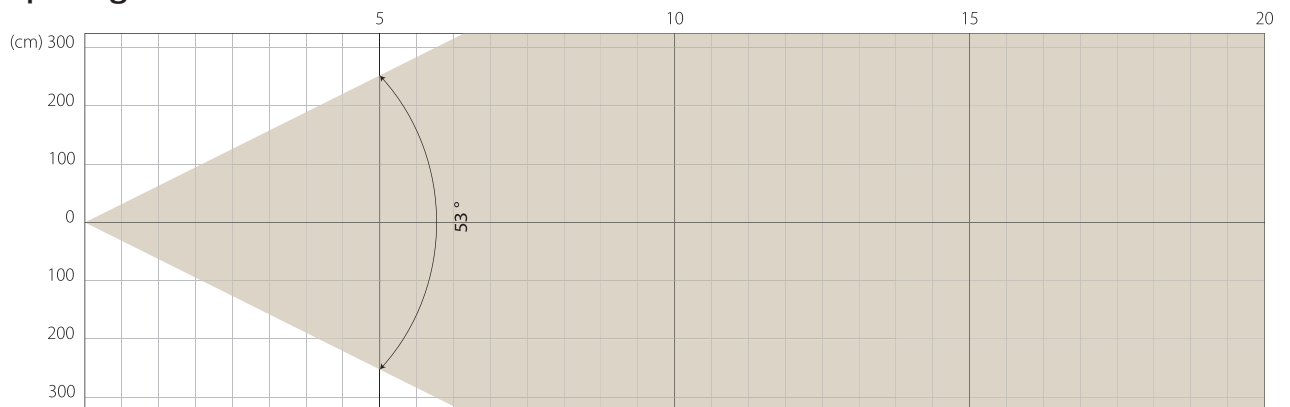


## Intensity

Distance (m)	5		10		15		20	
unit	lux	diameter	lux	diameter	lux	diameter	lux	diameter
White	3764	1,58	941	3,17	418	4,75	235	6,34

MAX ZOOM

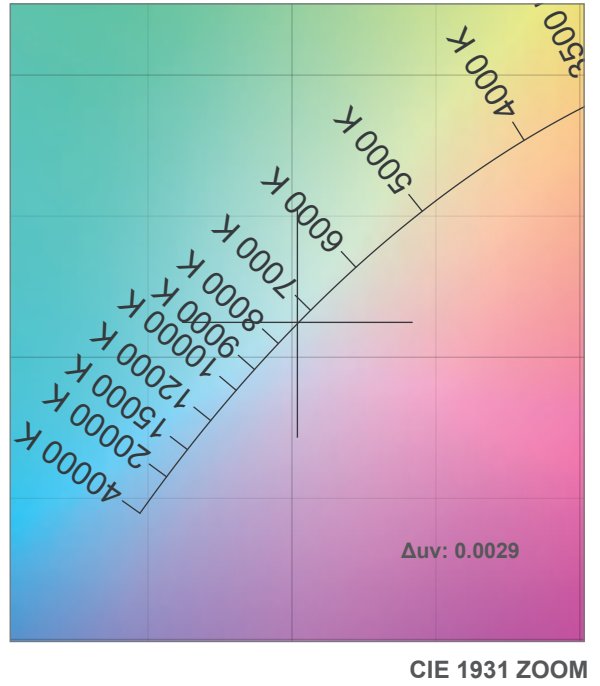
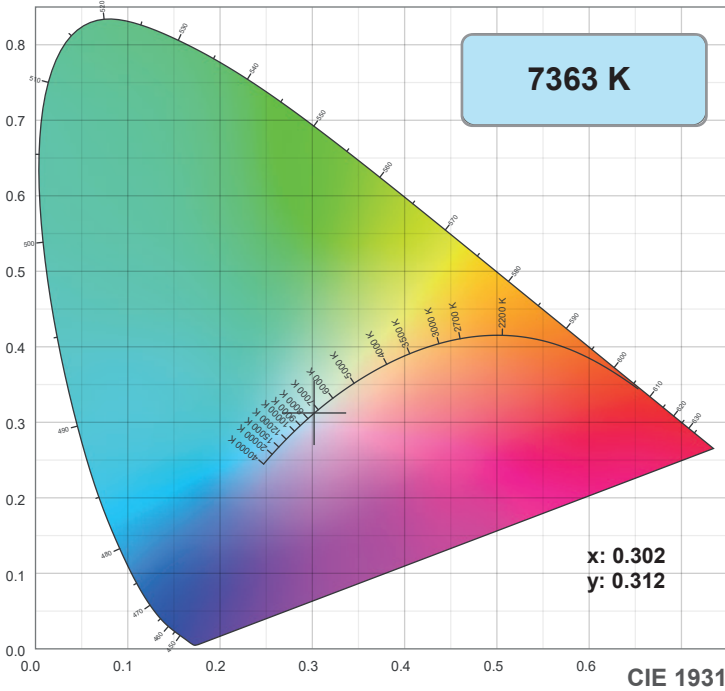
## Beam Opening



## Intensity

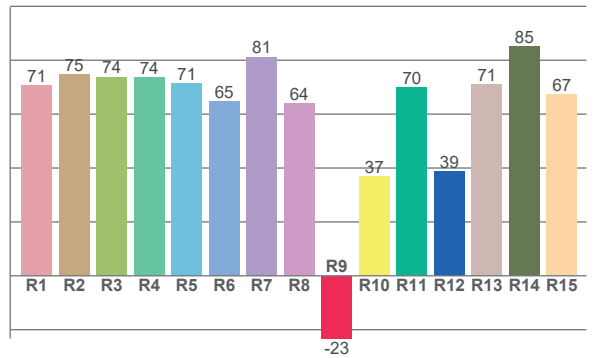
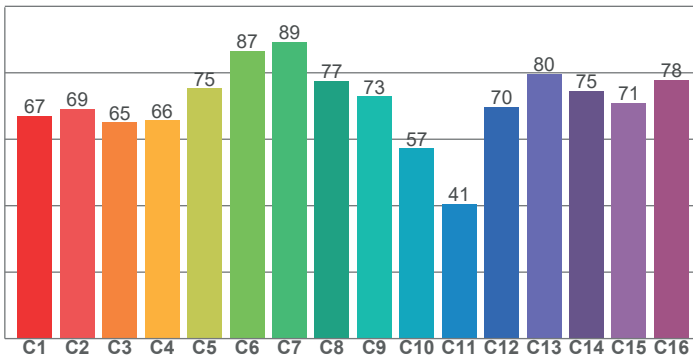
Distance (m)	5		10		15		20	
unit	lux	diameter	lux	diameter	lux	diameter	lux	diameter
White	718	4,99	179	9,97	80	14,96	45	19,94

# COLOR DETAILS



**TM-30: 71.1**

**CRI: 71.8 (R1-R8)**



CRI R values, only R1-R8 are used to calculate final CRI value

R1	R2	R3	R4	R5	R6	R7	R8	R9	R10	R11	R12	R13	R14	R15
70.8	74.9	73.8	73.8	71.4	64.7	81.2	64.0	-23.3	36.7	70.1	38.7	71.1	85.1	67.3

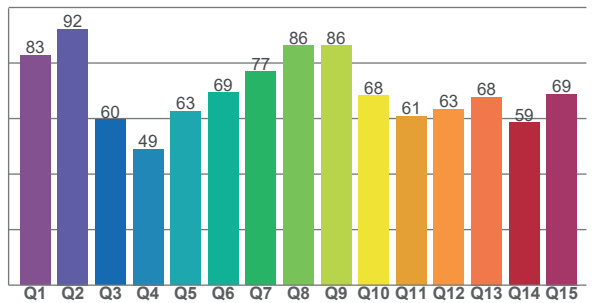
TM30 C values, 16 binned values out of total of 99 C values

C1	C2	C3	C4	C5	C6	C7	C8	C9	C10	C11	C12	C13	C14	C15	C16
67.1	69.1	65.1	65.7	75.4	86.6	89.2	77.5	72.9	57.2	40.6	69.8	79.7	74.6	70.9	77.8

CQS Q values

Q1	Q2	Q3	Q4	Q5	Q6	Q7	Q8	Q9	Q10	Q11	Q12	Q13	Q14	Q15
82.8	92.3	59.6	49.0	62.6	69.4	76.9	86.3	86.2	68.3	60.9	63.4	67.8	58.6	68.9

**CQS: 67.9**



## Color parameters

Color temperature	Color rendering index	Red component	Color fidelity	Color gamut	Color quality scale	Color coordinate cie 1931	Color coordinate cie 1931	Color coordinate	Color coordinate	Color deviation from black body
CCT	CRI	CRI R9	TM30 Rf	TM30 Rg	CQS	x	y	u	v	Δuv
7363 K	71.8	-23.3	71.1	93.0	67.9	0.302	0.312	0.197	0.305	0.0029

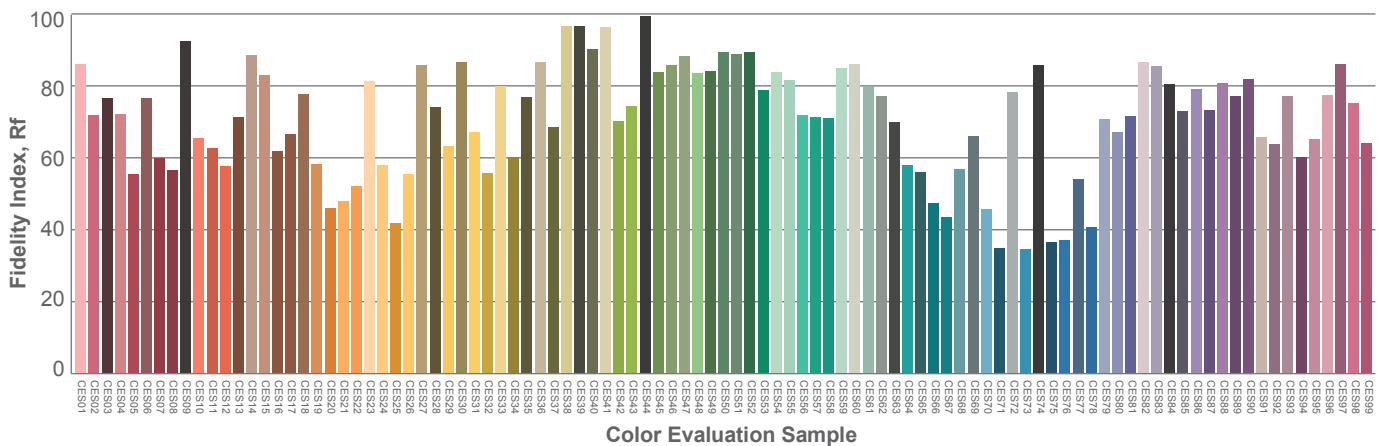
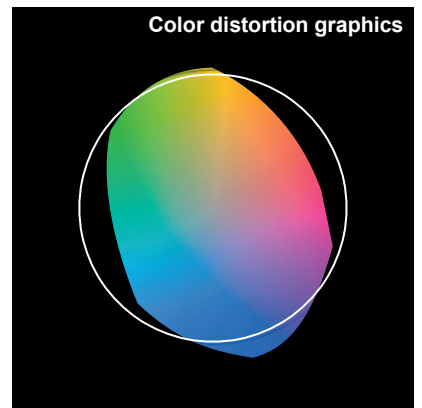
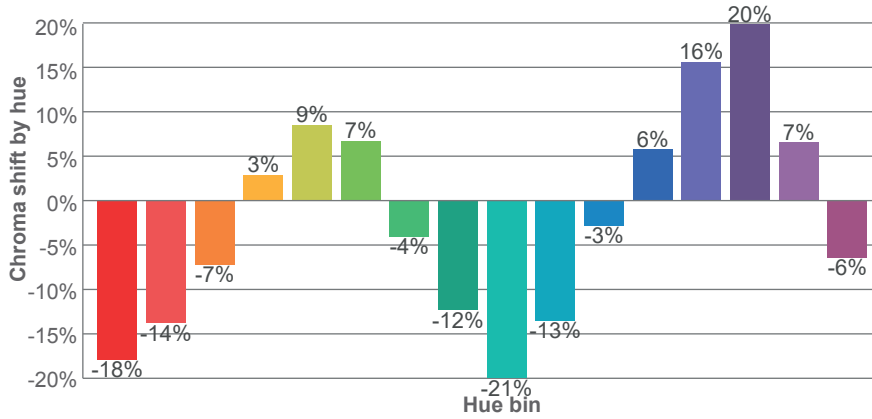
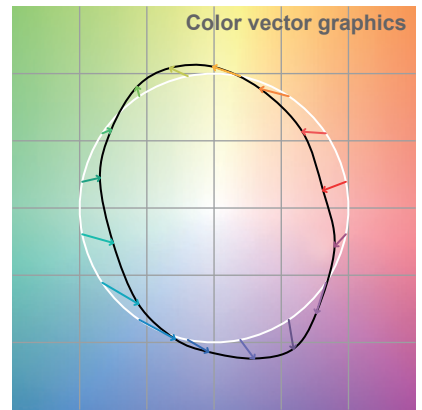
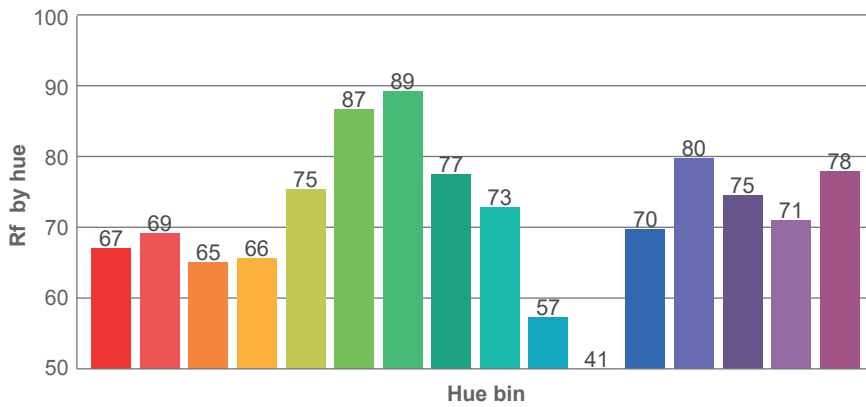
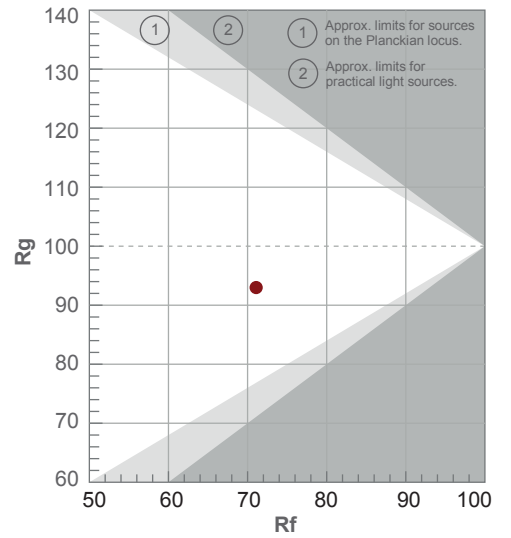


# TM-30 DETAILS

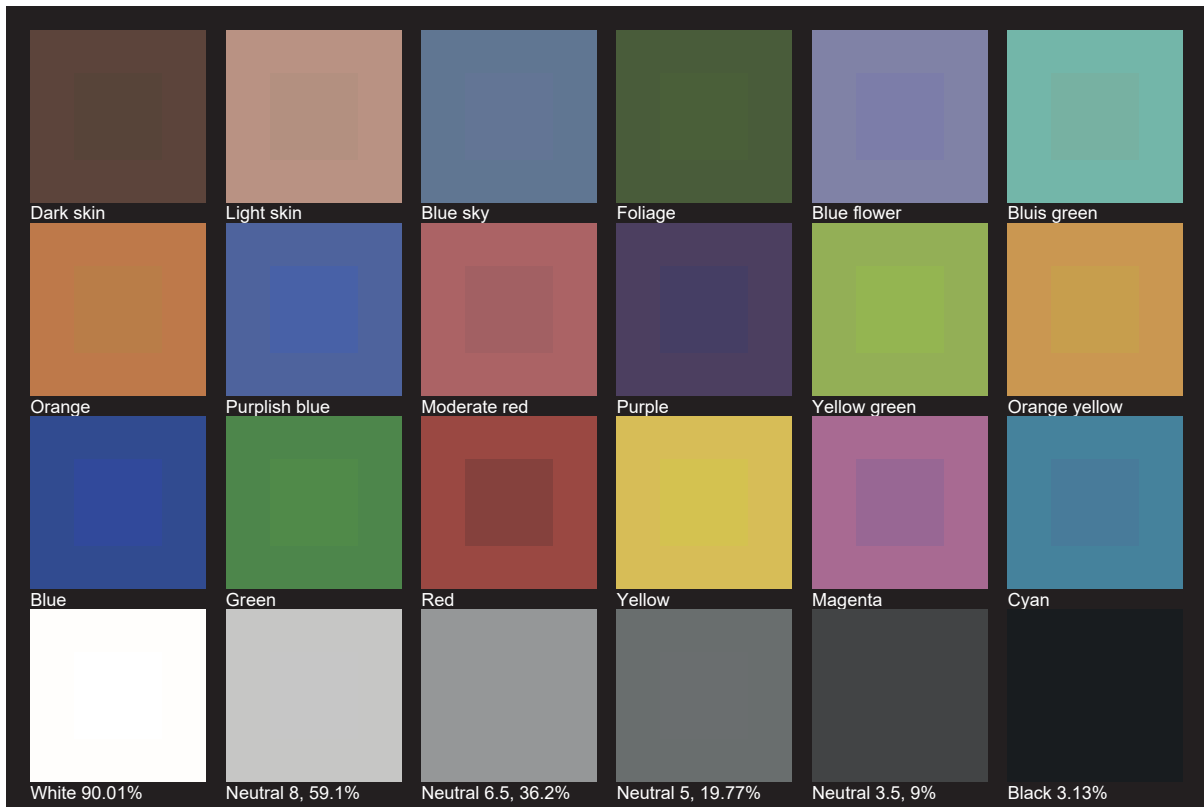
**Rf 71.1**  
Fidelity index Rf

**Rg 93.0**  
Gamut index Rg

Hue Bin	R <sub>f</sub>	Shifts (%)	
		Chroma	Hue
1	67	-18%	-3%
2	69	-14%	11%
3	65	-7%	21%
4	66	3%	21%
5	75	9%	12%
6	87	7%	-2%
7	89	-4%	-6%
8	77	-12%	-6%
9	73	-21%	11%
10	57	-13%	28%
11	41	-3%	30%
12	70	6%	17%
13	80	16%	7%
14	75	20%	-9%
15	71	7%	-23%
16	78	-6%	-10%



# TLCI 47







**AYRTON**

Digital Lighting