



# HURACÁN PROFILE TC

PHOTOMETRY



**AYRTON**  
Digital Lighting





<b>Total Flux</b>	33910 lm (@zoom 128, integrating sphere measurement, Fan mode auto)
-------------------	---

<b>CCT @LED engin</b>	6800 (±500K)
<b>CCT @open</b>	6400 (±500K)
<b>Ra @open</b>	95 (±2)
<b>TLCI</b>	95
<b>TM-30</b>	Rf: 90.8 Rg: 99.7

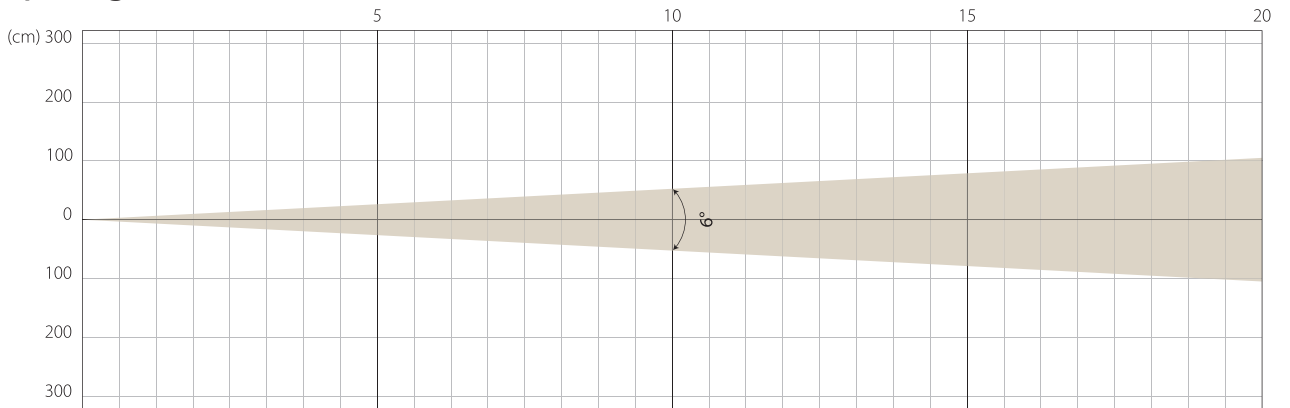
<b>Fan Mode</b>	<b>Noise Level (dBA)</b>	<b>by Goniometer (lm)</b>	<b>by Sphere (lm)</b>
<b>Auto</b>	47,3	21749	32049
<b>Stage</b>	49,4	23078	33910
<b>Silence</b>	42	17339	25702
<b>Super Silence</b>	40,5	16296	24182

Note: noise measured @1m distance, static status, ambient 31 dBA.

<b>Voltage / Power</b>	100-240V, 50-60Hz	1600 W
<b>Fixture Dimension / Weight</b>	486 x 811 x 294 mm	46 kg
<b>Packing Dimension / Weight</b>	720 x 560 x 715 mm	64 kg

MIN ZOOM

## Beam Opening

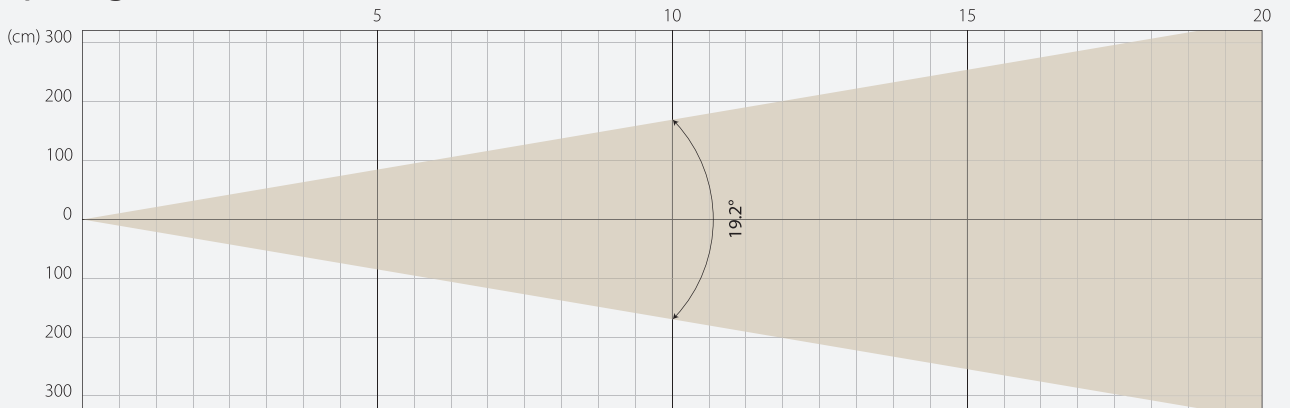


## Intensity

Distance (m)	5		10		15		20	
unit	lux	diameter	lux	diameter	lux	diameter	lux	diameter
White	56878	0,52	14219	1,05	6320	1,57	3555	2,1

MIDDLE ZOOM

## Beam Opening

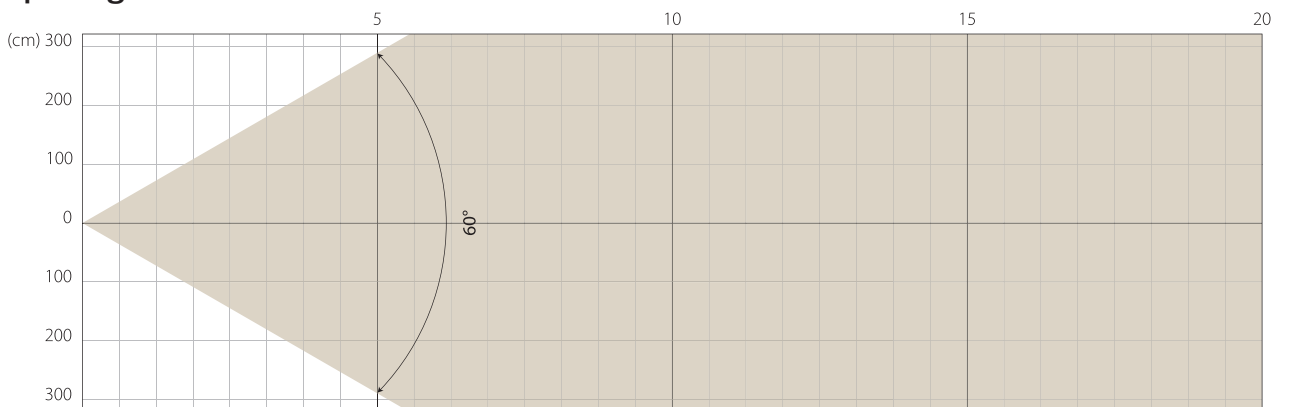


## Intensity

Distance (m)	5		10		15		20	
unit	lux	diameter	lux	diameter	lux	diameter	lux	diameter
White	10471	1,68	2618	3,36	1163	5,05	654	6,73

MAX ZOOM

## Beam Opening



## Intensity

Distance (m)	5		10		15		20	
unit	lux	diameter	lux	diameter	lux	diameter	lux	diameter
White	1329	5,77	332	11,55	148	17,32	83	23,09

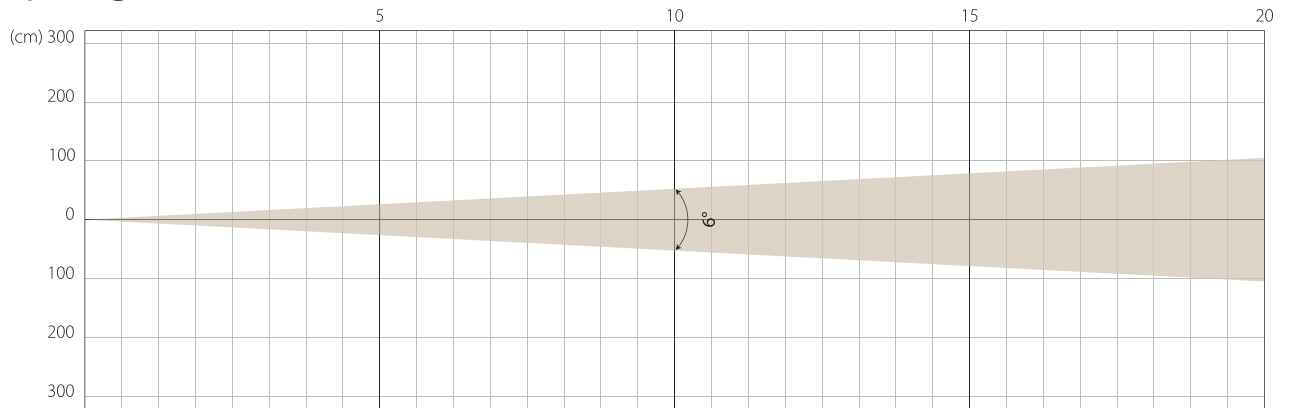
Note: Measurement done with Goniometer

# STAGE MODE

NATIVE CRI GREATER THAN 95

MIN ZOOM

## Beam Opening

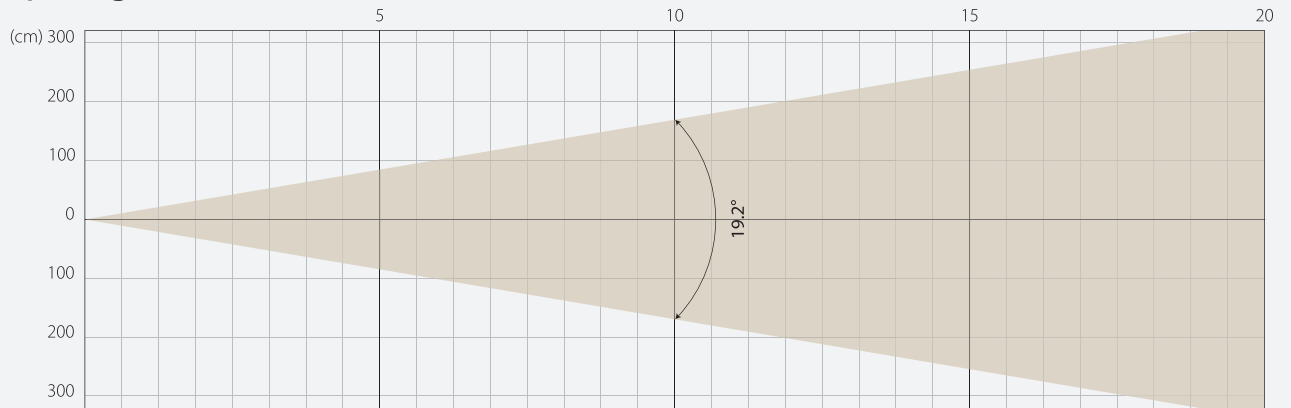


## Intensity

Distance (m)	5		10		15		20	
unit	lux	diameter	lux	diameter	lux	diameter	lux	diameter
White	60924	0,52	15231	1,05	6769	1,57	3808	2,1

MIDDLE ZOOM

## Beam Opening

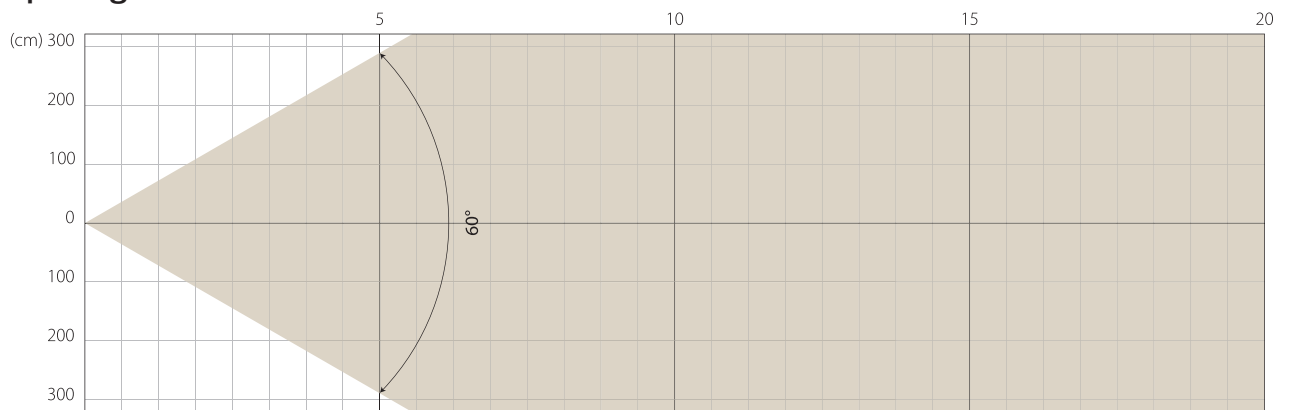


## Intensity

Distance (m)	5		10		15		20	
unit	lux	diameter	lux	diameter	lux	diameter	lux	diameter
White	11223	1,68	2806	3,36	1247	5,05	701	6,73

MAX ZOOM

## Beam Opening



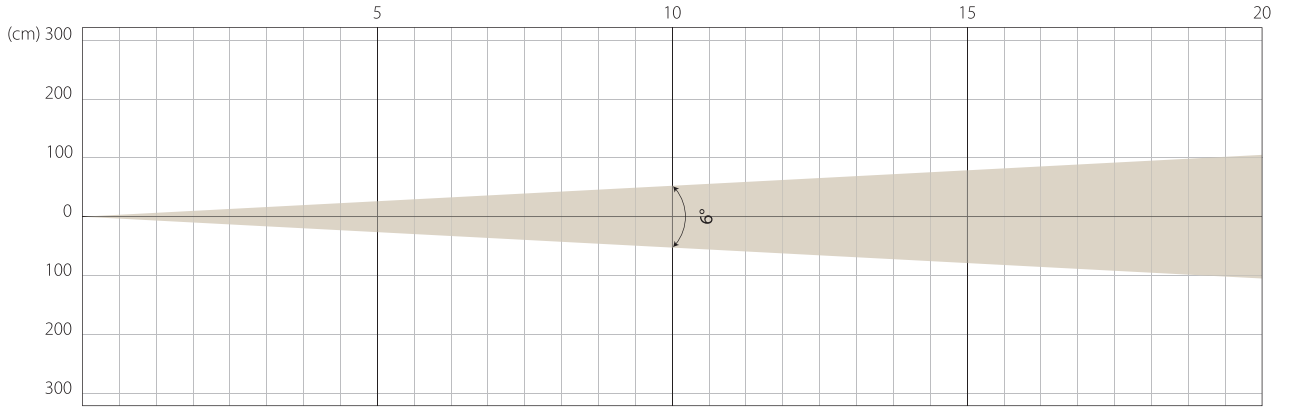
## Intensity

Distance (m)	5		10		15		20	
unit	lux	diameter	lux	diameter	lux	diameter	lux	diameter
White	1427	5,77	357	11,55	159	17,32	89	23,09

Note: Measurement done with Goniometer

MIN ZOOM

## Beam Opening

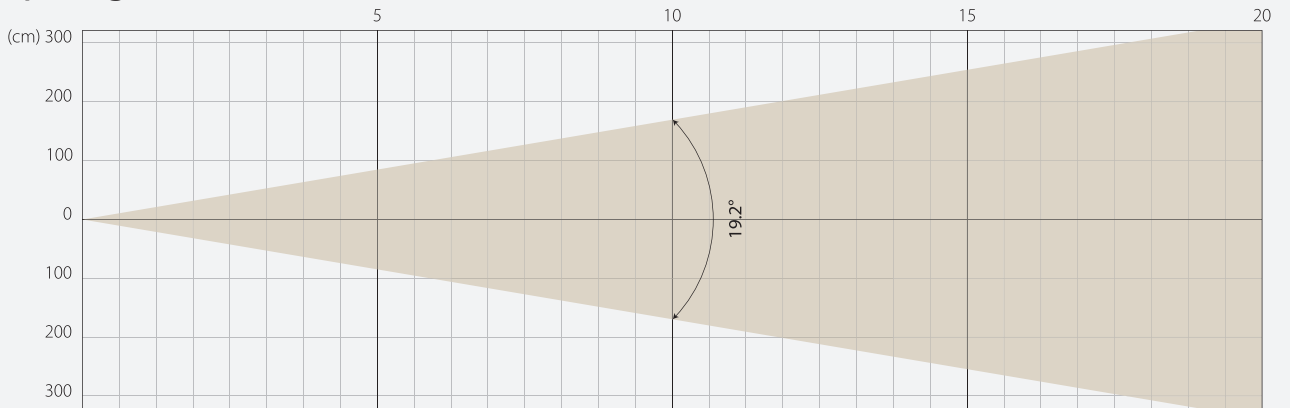


## Intensity

Distance (m)	5		10		15		20	
unit	lux	diameter	lux	diameter	lux	diameter	lux	diameter
White	45215	0,52	11304	1,05	5024	1,57	2826	2,1

MIDDLE ZOOM

## Beam Opening

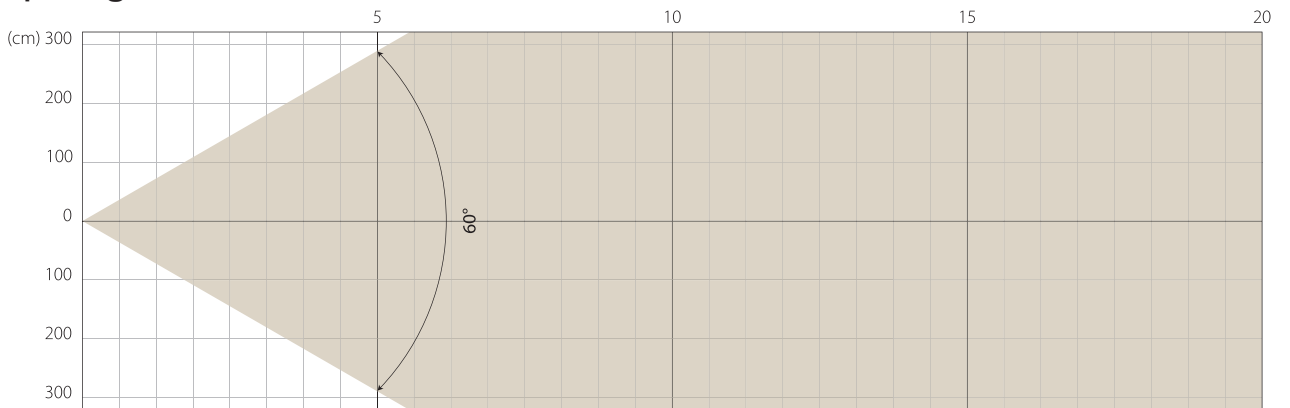


## Intensity

Distance (m)	5		10		15		20	
unit	lux	diameter	lux	diameter	lux	diameter	lux	diameter
White	8294	1,68	2073	3,36	922	5,05	518	6,73

MAX ZOOM

## Beam Opening



## Intensity

Distance (m)	5		10		15		20	
unit	lux	diameter	lux	diameter	lux	diameter	lux	diameter
White	1051	5,77	324	11,55	117	17,32	66	23,09

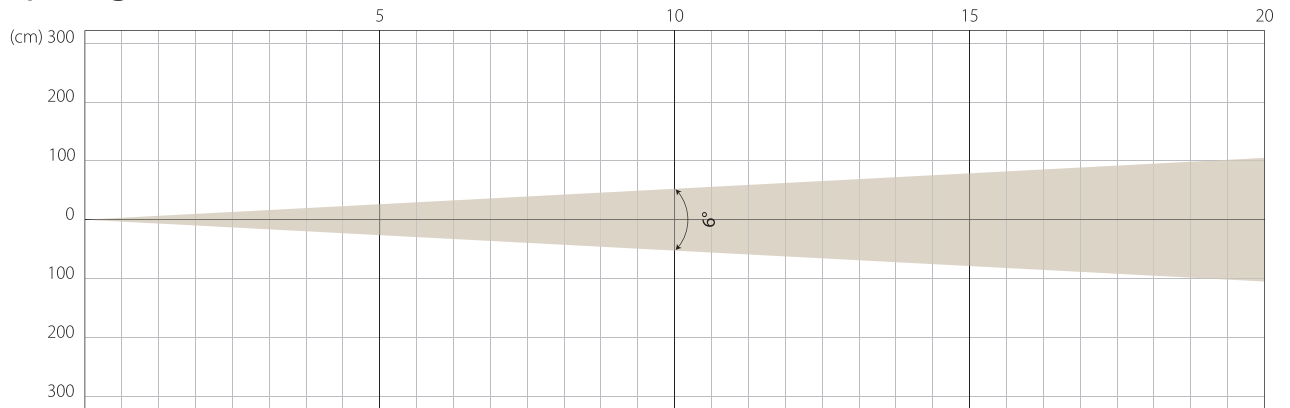
Note: Measurement done with Goniometer

# SUPER SILENCE MODE

NATIVE CRI GREATER THAN 95

MIN ZOOM

## Beam Opening

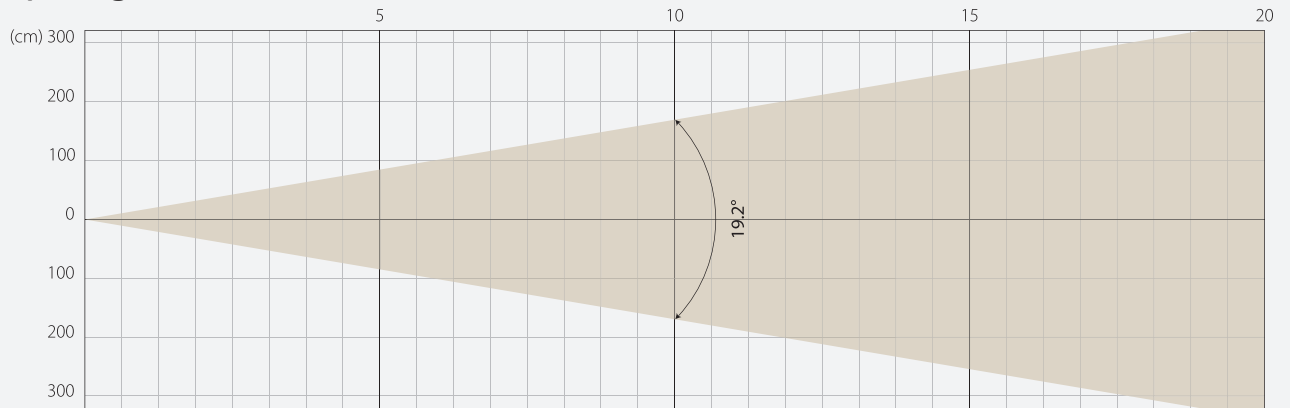


## Intensity

Distance (m)	5		10		15		20	
unit	lux	diameter	lux	diameter	lux	diameter	lux	diameter
White	42604	0,52	10651	1,05	4734	1,57	2663	2,1

MIDDLE ZOOM

## Beam Opening

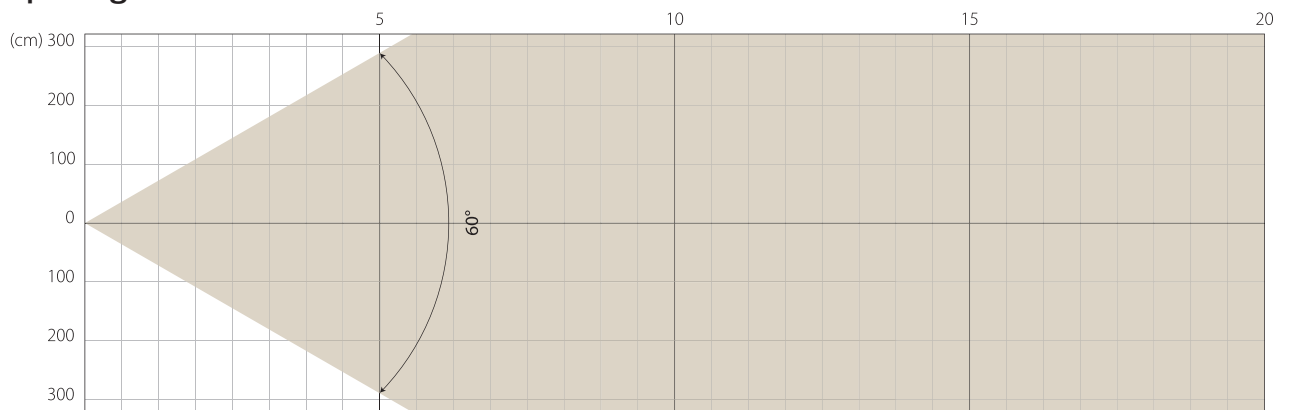


## Intensity

Distance (m)	5		10		15		20	
unit	lux	diameter	lux	diameter	lux	diameter	lux	diameter
White	7761	1,68	1940	3,36	862	5,05	485	6,73

MAX ZOOM

## Beam Opening

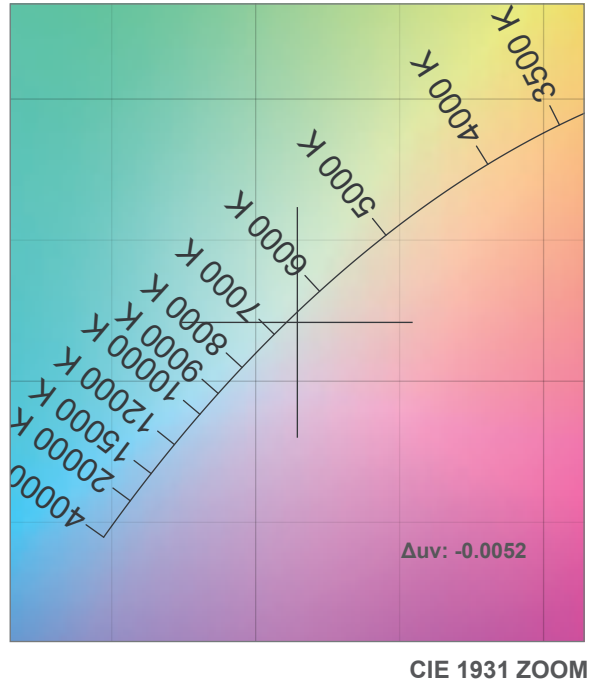
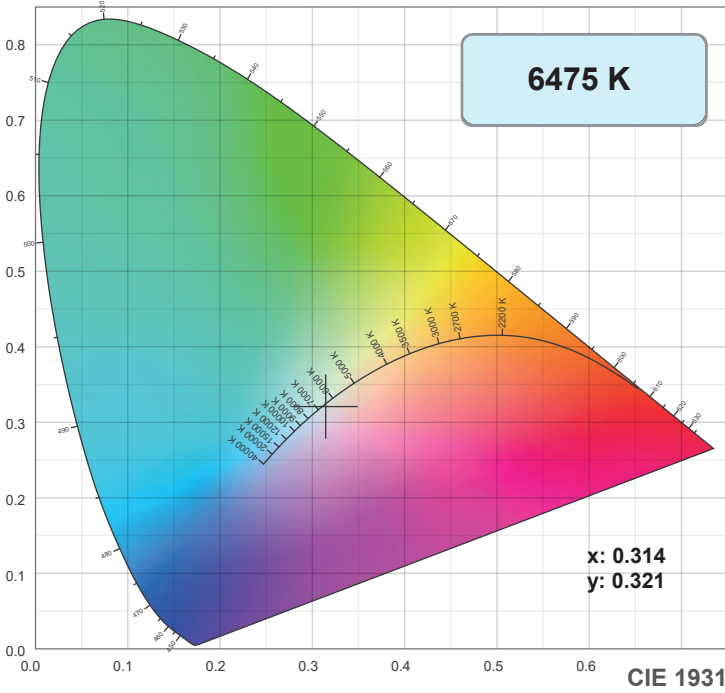


## Intensity

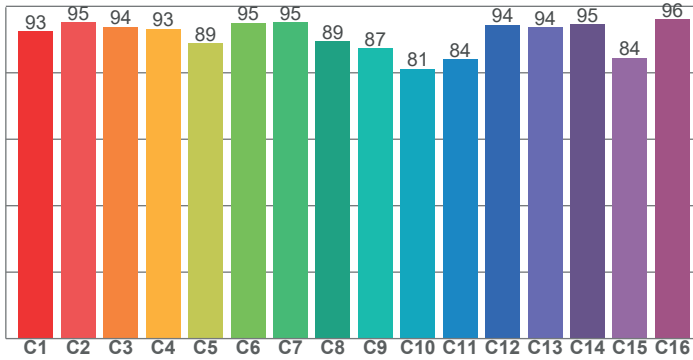
Distance (m)	5		10		15		20	
unit	lux	diameter	lux	diameter	lux	diameter	lux	diameter
White	988	5,77	247	11,55	110	17,32	62	23,09

Note: Measurement done with Goniometer

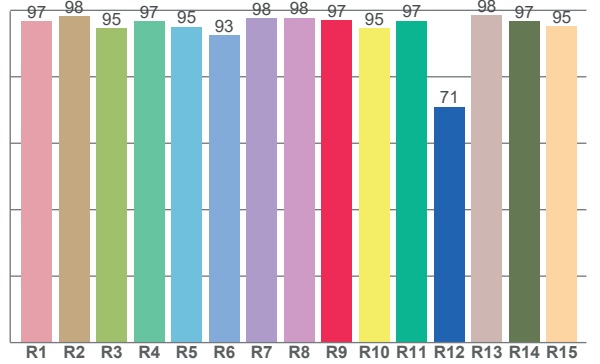
# COLOR DETAILS



**TM-30: 90.8**



**CRI: 96.2 (R1-R8)**



CRI R values, only R1-R8 are used to calculate final CRI value

R1	R2	R3	R4	R5	R6	R7	R8	R9	R10	R11	R12	R13	R14	R15
96.8	98.2	94.6	96.7	95.0	92.5	97.7	97.8	97.1	94.7	96.8	71.0	98.4	96.7	95.1

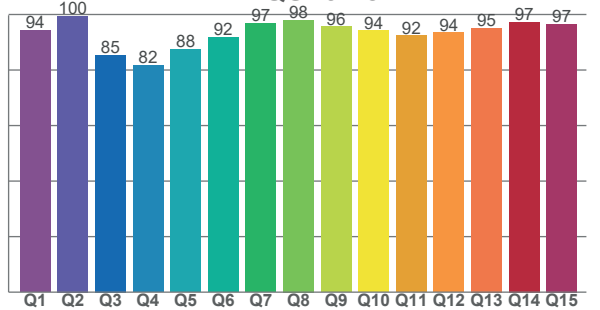
TM30 C values, 16 binned values out of total of 99 C values

C1	C2	C3	C4	C5	C6	C7	C8	C9	C10	C11	C12	C13	C14	C15	C16
92.5	95.2	93.9	93.3	88.9	95.0	95.2	89.5	87.4	81.1	84.0	94.3	93.6	94.5	84.4	96.0

CQS Q values

Q1	Q2	Q3	Q4	Q5	Q6	Q7	Q8	Q9	Q10	Q11	Q12	Q13	Q14	Q15
94.4	99.5	85.4	81.7	87.5	91.8	96.8	98.0	95.6	94.1	92.3	93.5	95.1	97.3	96.6

**CQS: 91.8**



## Color parameters

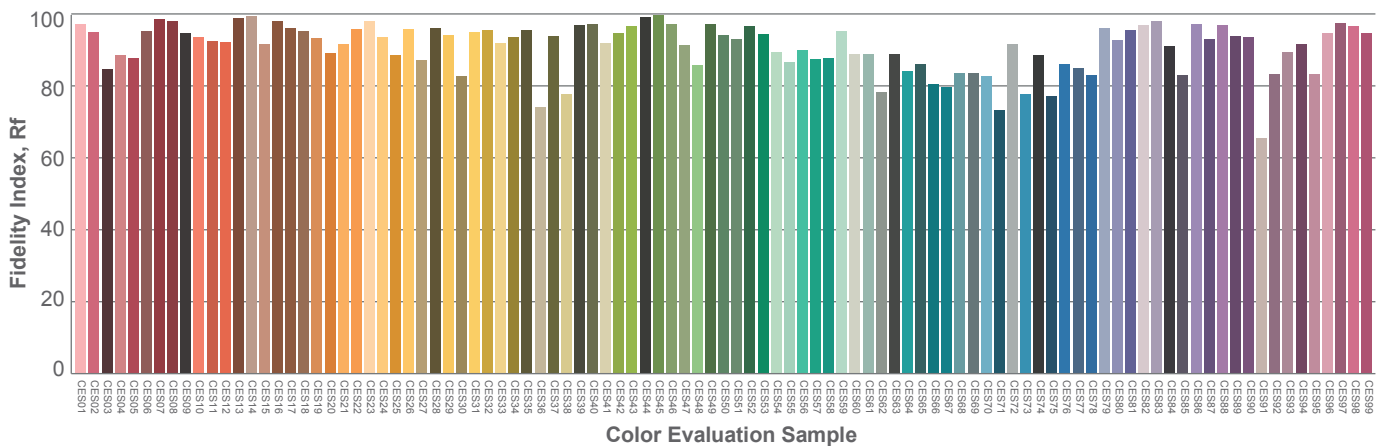
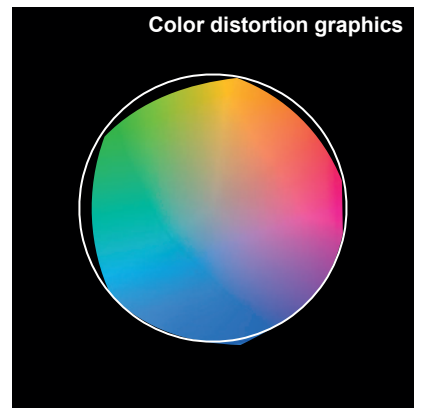
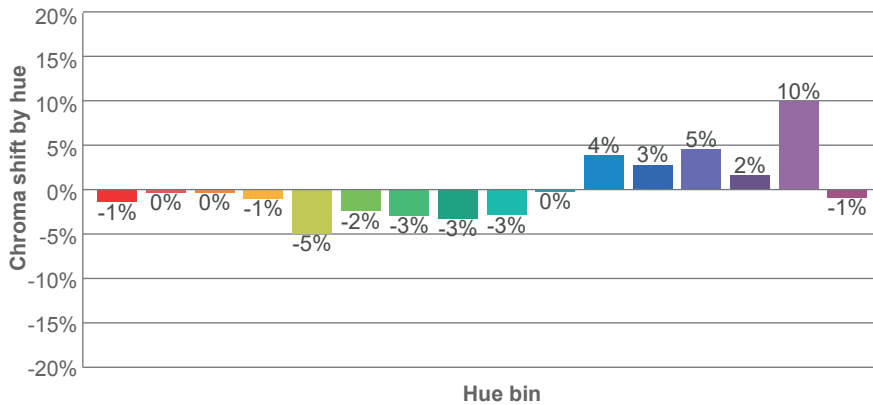
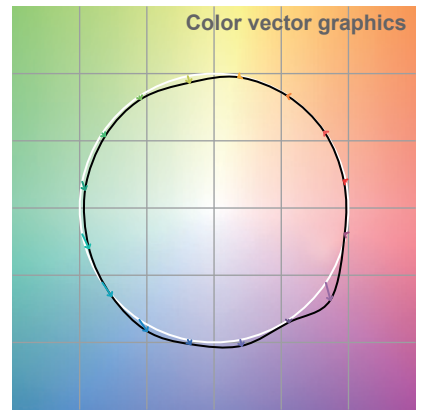
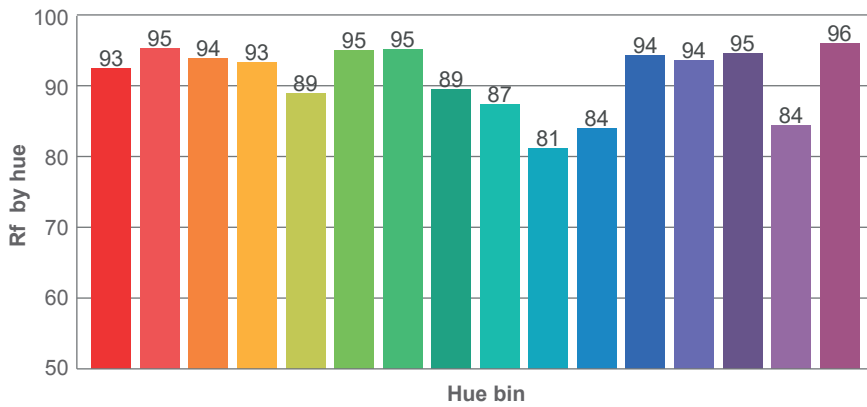
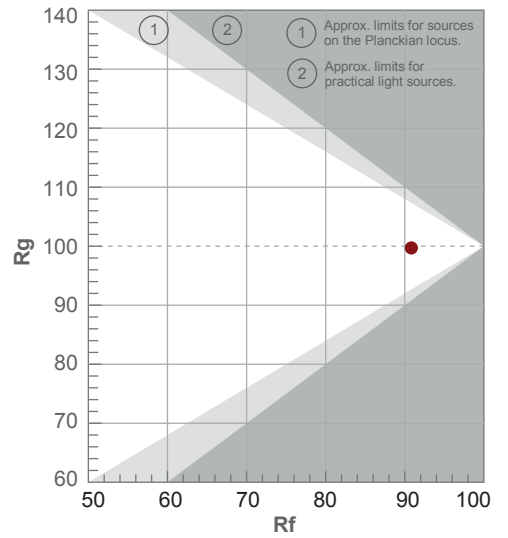
Color temperature	Color rendering index	Red component	Color fidelity	Color gamut	Color quality scale	Color coordinate cie 1931	Color coordinate cie 1931	Color coordinate	Color coordinate	Color deviation from black body
CCT	CRI	CRI R9	TM30 Rf	TM30 Rg	CQS	x	y	u	v	Δuv
6475 K	96.2	97.1	90.8	99.7	91.8	0.314	0.321	0.202	0.309	-0.0052

# TM-30 DETAILS

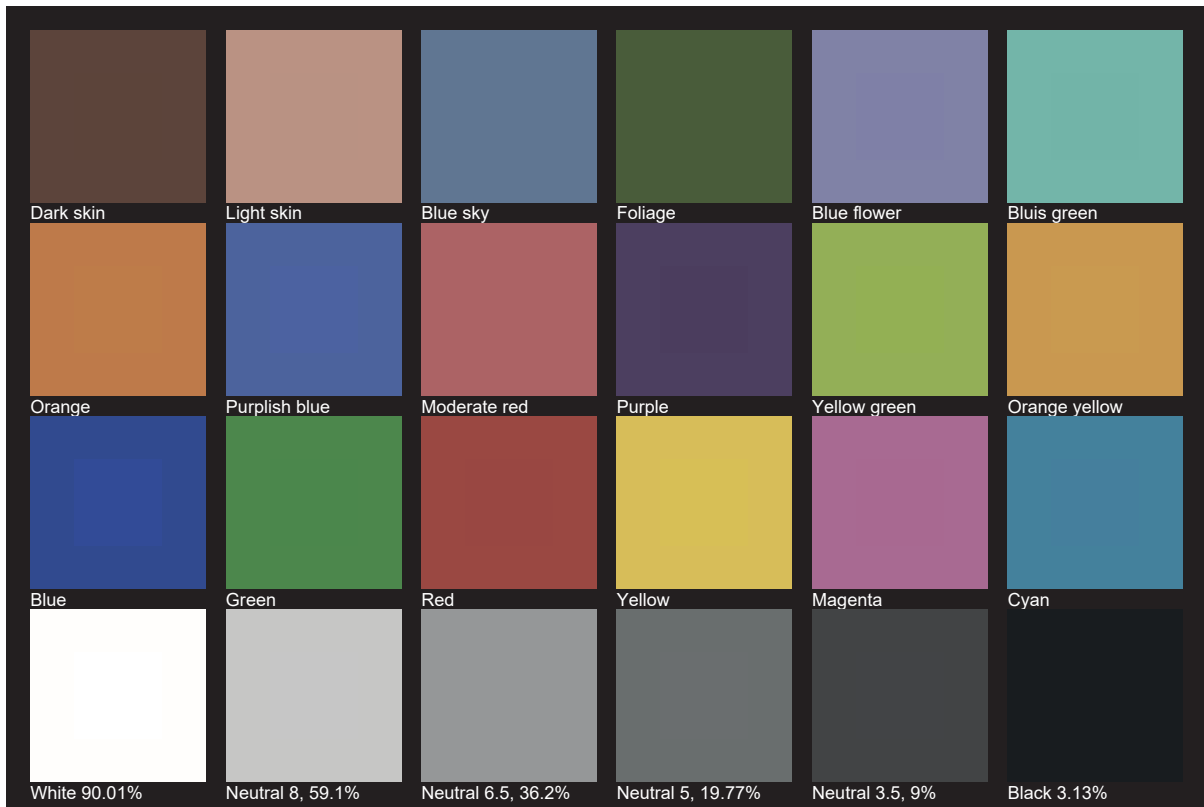
**Rf 90.8**  
Fidelity index Rf

**Rg 99.7**  
Gamut index Rg

Hue Bin	R <sub>f</sub>	Shifts (%)	
		Chroma	Hue
1	93	-1%	1%
2	95	0%	2%
3	94	0%	1%
4	93	-1%	1%
5	89	-5%	0%
6	95	-2%	0%
7	95	-3%	1%
8	89	-3%	5%
9	87	-3%	11%
10	81	0%	12%
11	84	4%	9%
12	94	3%	3%
13	94	5%	0%
14	95	2%	-1%
15	84	10%	-9%
16	96	-1%	0%



# TLCI 95







**AYRTON**

Digital Lighting