



# HURACÁN PROFILE S

PHOTOMETRY



**AYRTON**  
Digital Lighting





<b>Total Flux</b>	51364 lm (@zoom 106, integrating sphere measurement, Fan mode auto)
-------------------	---

<b>CCT @LED engine</b>	8000 (±500K)
<b>CCT @open</b>	7000 (±500K)
<b>Ra @open</b>	70 (±2)
<b>TLCI</b>	47
<b>TM-30</b>	Rf: 72.6 Rg: 92.1

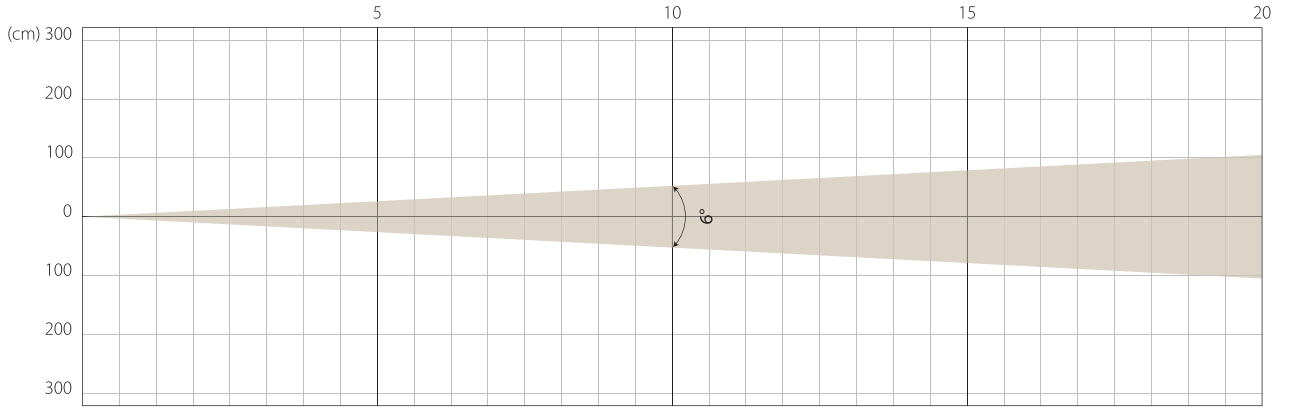
<b>Fan Mode</b>	<b>Noise Level (dBA)</b>	<b>by Goniometer (lm)</b>	<b>by Sphere (lm)</b>
<b>Auto</b>	47,3	38306	49307
<b>Stage</b>	49,4	39217	51364
<b>Silence</b>	42	30927	39542
<b>Super Silence</b>	40,5	29293	37204

Note: noise measured @1m distance, static status, ambient 31 dBA.

<b>Voltage / Power</b>	100-240V, 50-60Hz	1600 W
<b>Fixture Dimension / Weight</b>	486 x 811 x 294 mm	46 kg
<b>Packing Dimension / Weight</b>	720 x 560 x 715 mm	64 kg

MIN ZOOM

## Beam Opening

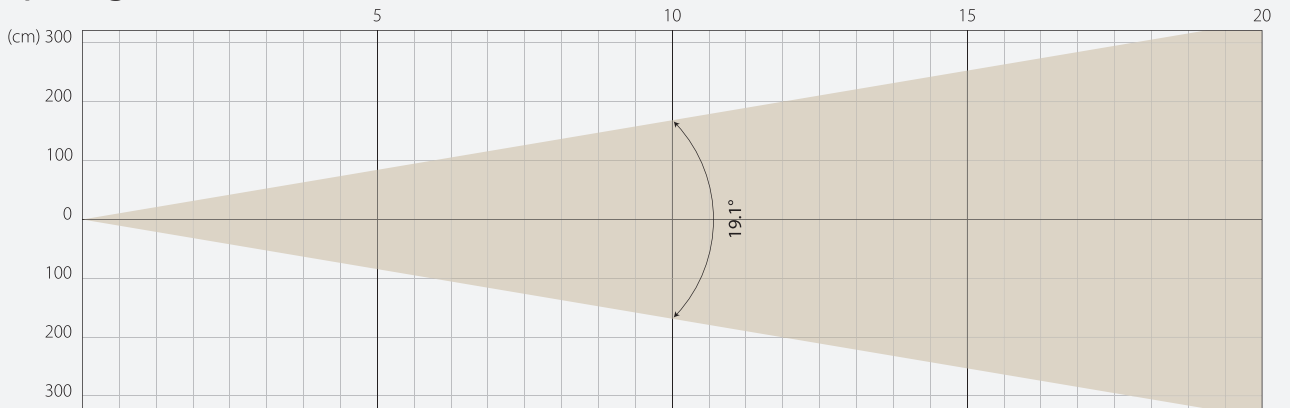


## Intensity

Distance (m)	5		10		15		20	
unit	lux	diameter	lux	diameter	lux	diameter	lux	diameter
White	93059	0,52	23265	1,05	10340	1,57	5816	2,1

MIDDLE ZOOM

## Beam Opening

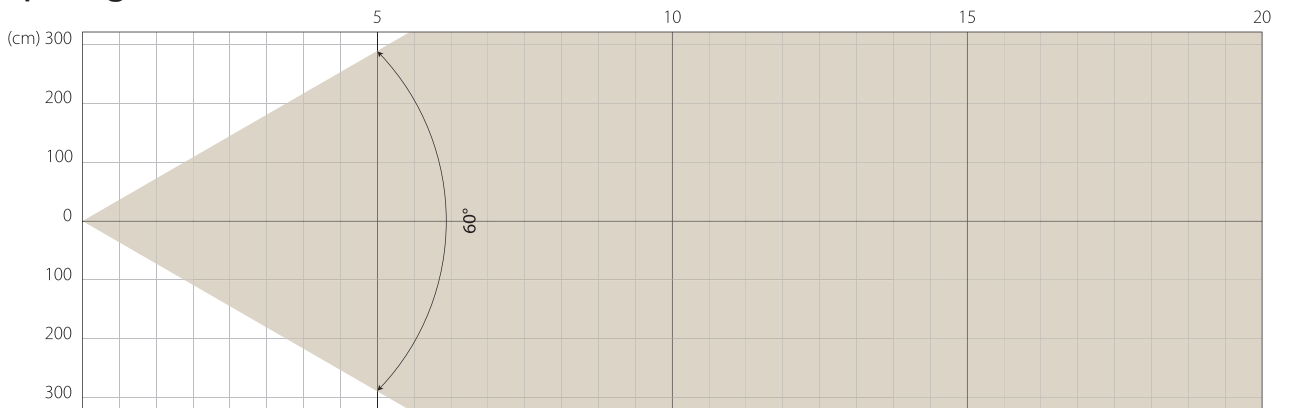


## Intensity

Distance (m)	5		10		15		20	
unit	lux	diameter	lux	diameter	lux	diameter	lux	diameter
White	17377	1,68	4344	3,36	1931	5,05	1086	6,73

MAX ZOOM

## Beam Opening



## Intensity

Distance (m)	5		10		15		20	
unit	lux	diameter	lux	diameter	lux	diameter	lux	diameter
White	2212	5,77	553	11,55	246	17,32	138	23,09

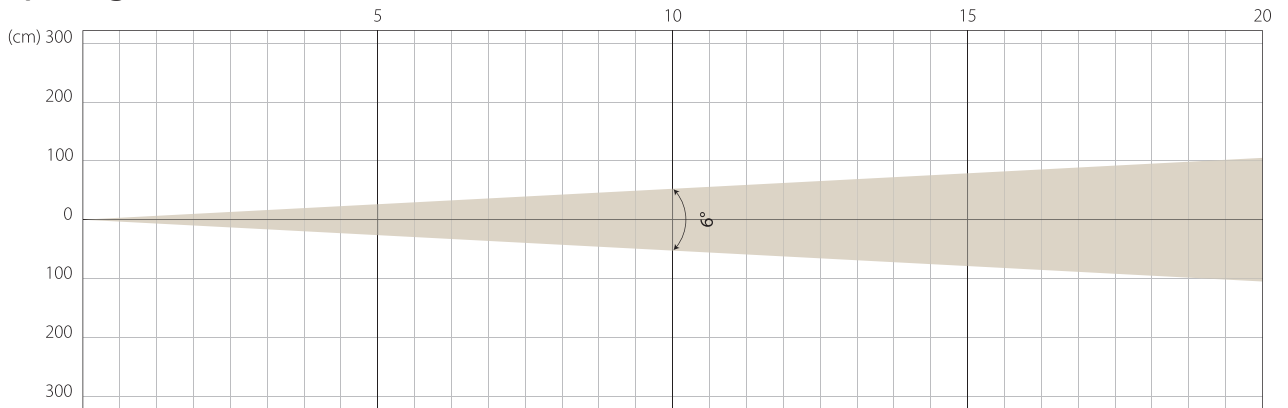
Note: Measurement done with Goniometer

# STAGE MODE

NATIVE CRI GREATER THAN 70

MIN ZOOM

## Beam Opening

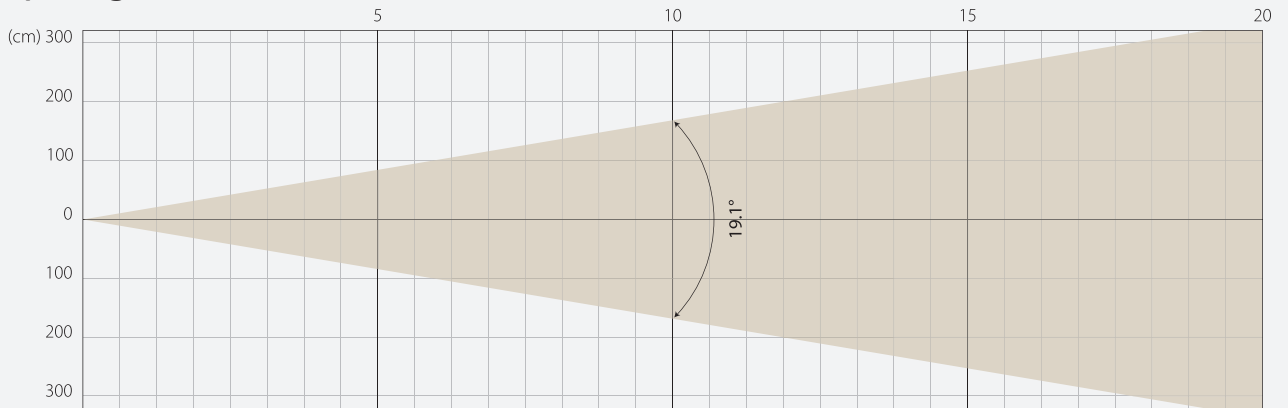


## Intensity

Distance (m)	5		10		15		20	
unit	lux	diameter	lux	diameter	lux	diameter	lux	diameter
White	100138	0,52	25035	1,05	11126	1,57	6259	2,1

MIDDLE ZOOM

## Beam Opening

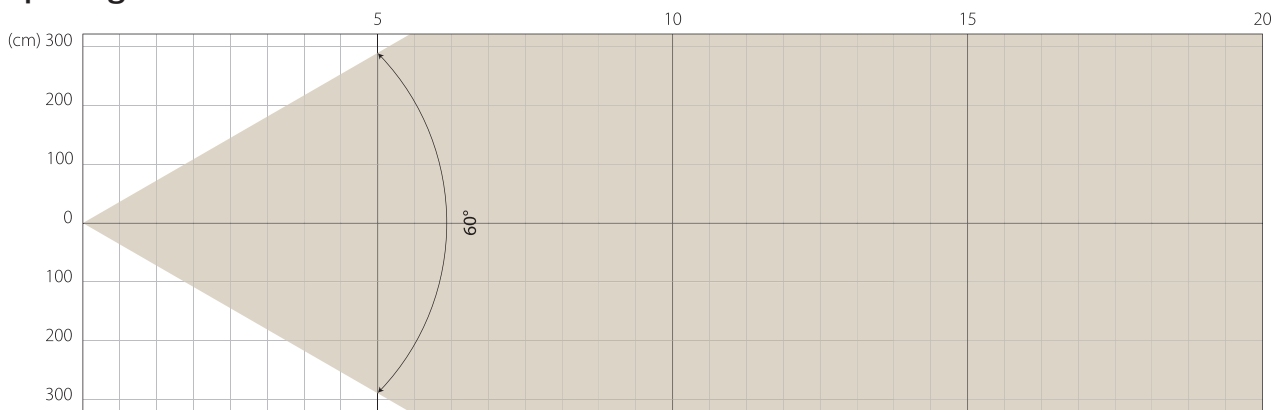


## Intensity

Distance (m)	5		10		15		20	
unit	lux	diameter	lux	diameter	lux	diameter	lux	diameter
White	18720	1,68	4680	3,36	2080	5,05	1170	6,73

MAX ZOOM

## Beam Opening



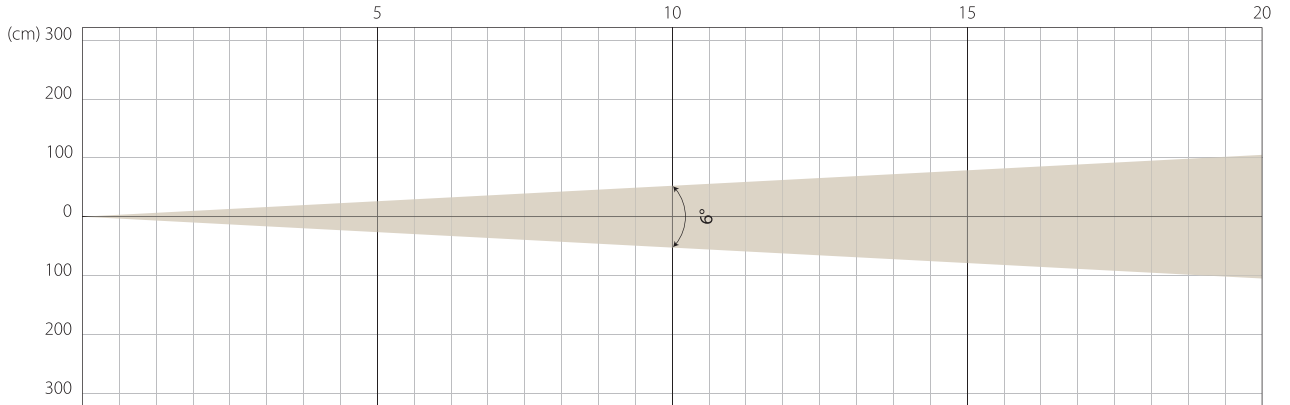
## Intensity

Distance (m)	5		10		15		20	
unit	lux	diameter	lux	diameter	lux	diameter	lux	diameter
White	2375	5,77	594	11,55	264	17,32	148	23,09

Note: Measurement done with Goniometer

MIN ZOOM

## Beam Opening

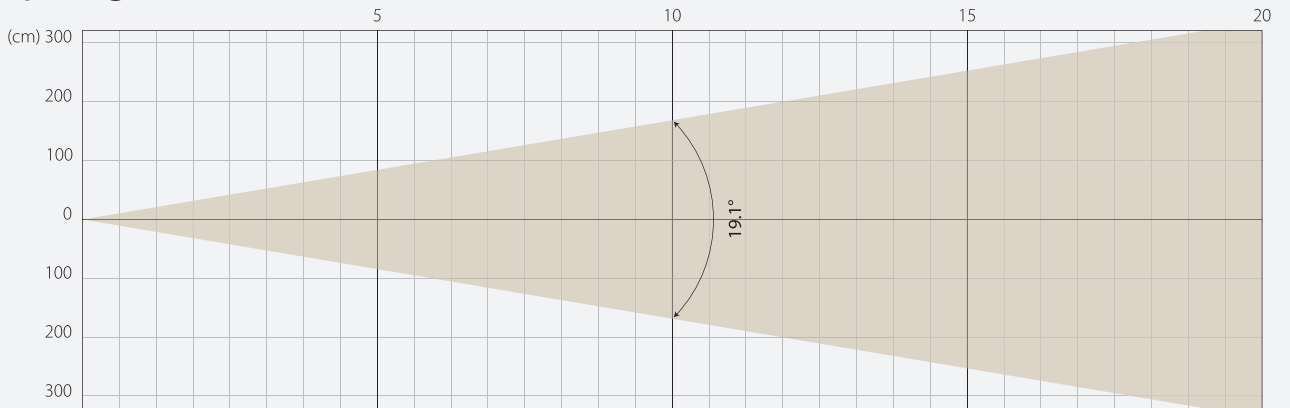


## Intensity

Distance (m)	5		10		15		20	
unit	lux	diameter	lux	diameter	lux	diameter	lux	diameter
White	74818	0,52	18705	1,05	8313	1,57	4676	2,1

MIDDLE ZOOM

## Beam Opening

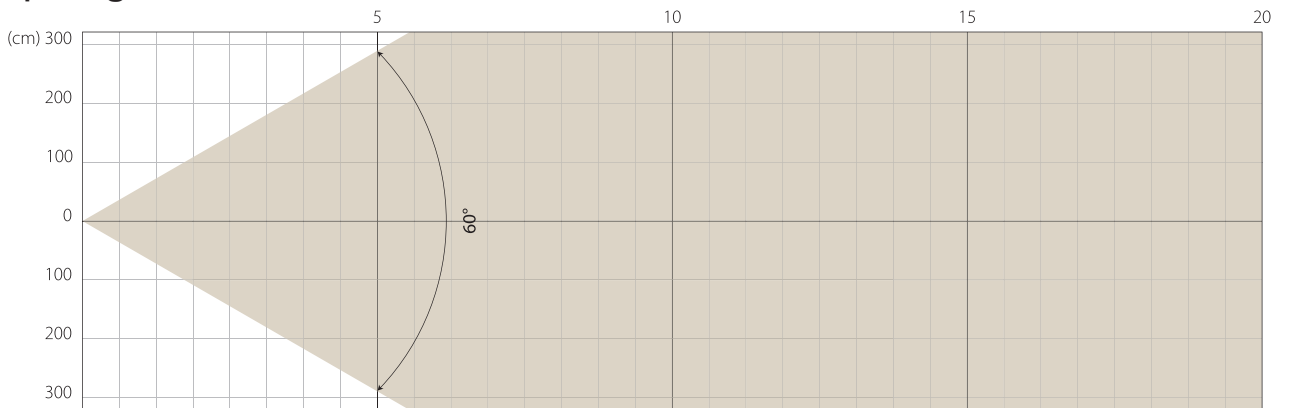


## Intensity

Distance (m)	5		10		15		20	
unit	lux	diameter	lux	diameter	lux	diameter	lux	diameter
White	13946	1,68	3486	3,36	1550	5,05	872	6,73

MAX ZOOM

## Beam Opening



## Intensity

Distance (m)	5		10		15		20	
unit	lux	diameter	lux	diameter	lux	diameter	lux	diameter
White	1766	5,77	442	11,55	196	17,32	110	23,09

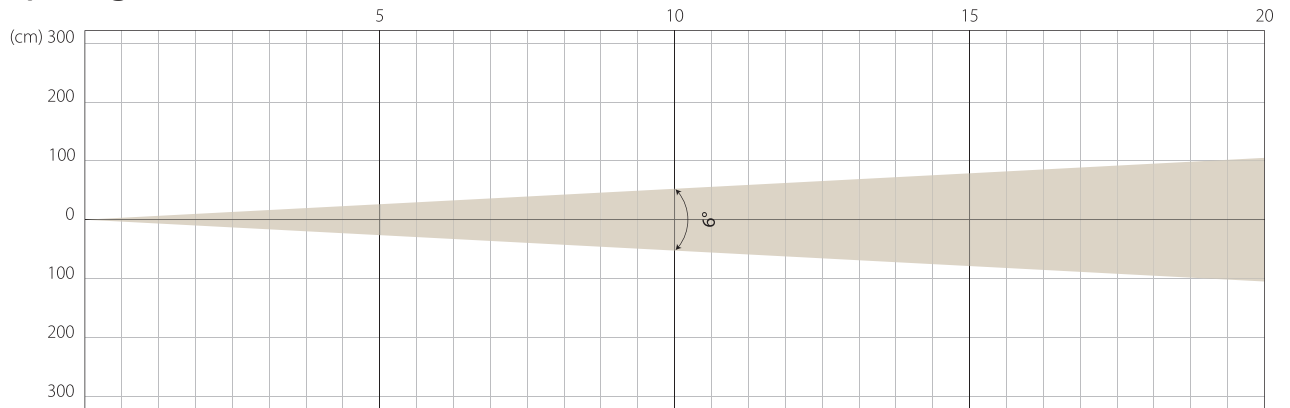
Note: Measurement done with Goniometer

# SUPER SILENCE MODE

NATIVE CRI GREATER THAN 70

MIN ZOOM

## Beam Opening

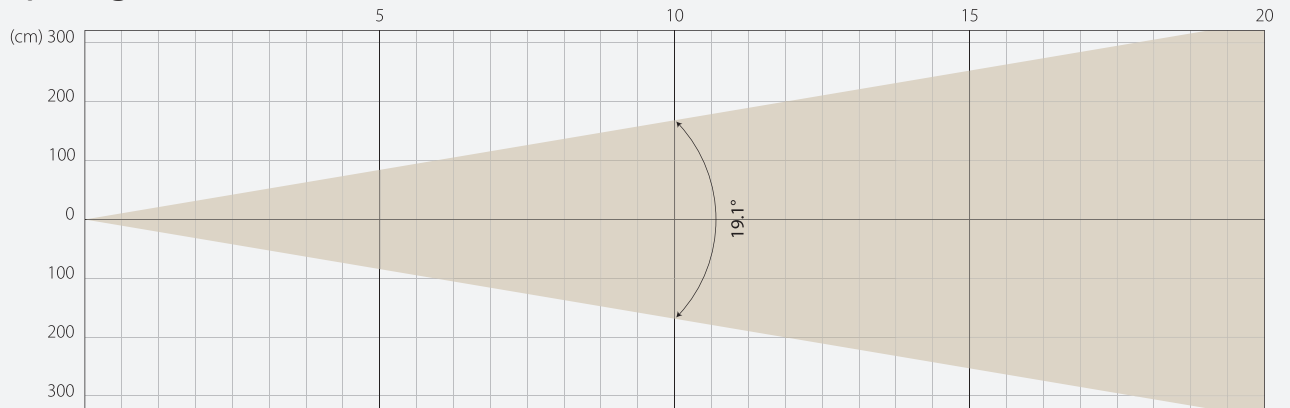


## Intensity

Distance (m)	5		10		15		20	
unit	lux	diameter	lux	diameter	lux	diameter	lux	diameter
White	70249	0,52	17562	1,05	7805	1,57	4391	2,1

MIDDLE ZOOM

## Beam Opening

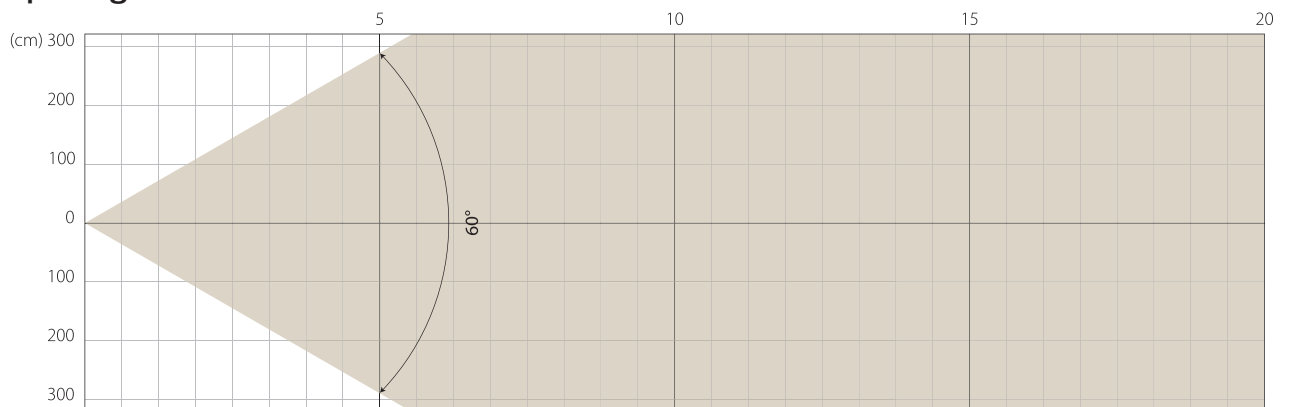


## Intensity

Distance (m)	5		10		15		20	
unit	lux	diameter	lux	diameter	lux	diameter	lux	diameter
White	13131	1,68	3283	3,36	1459	5,05	821	6,73

MAX ZOOM

## Beam Opening

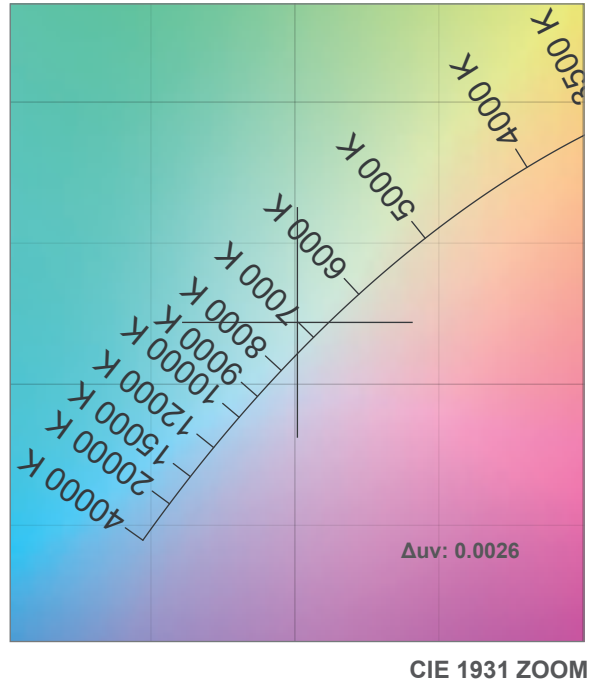
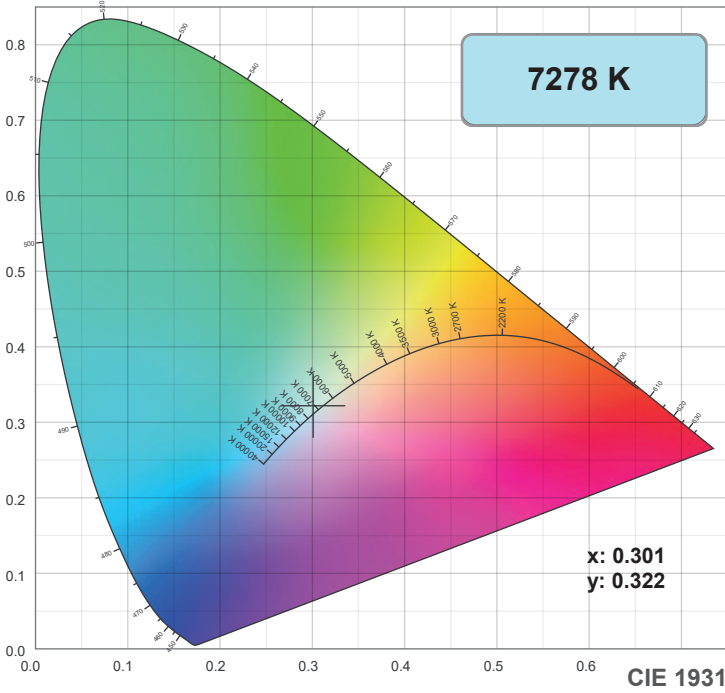


## Intensity

Distance (m)	5		10		15		20	
unit	lux	diameter	lux	diameter	lux	diameter	lux	diameter
White	1661	5,77	415	11,55	185	17,32	104	23,09

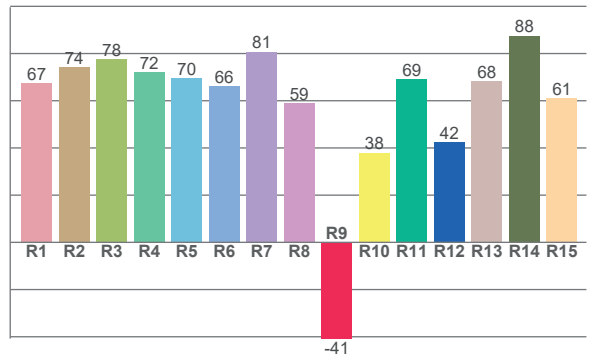
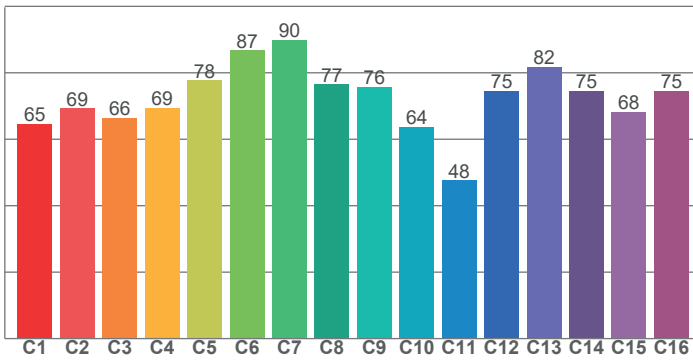
Note: Measurement done with Goniometer

# COLOR DETAILS



TM-30: 72.6

CRI: 70.9 (R1-R8)



CRI R values, only R1-R8 are used to calculate final CRI value

R1	R2	R3	R4	R5	R6	R7	R8	R9	R10	R11	R12	R13	R14	R15
67.5	74.2	77.7	72.0	69.7	66.0	80.7	59.1	-40.8	38.0	69.2	42.5	68.4	87.6	61.1

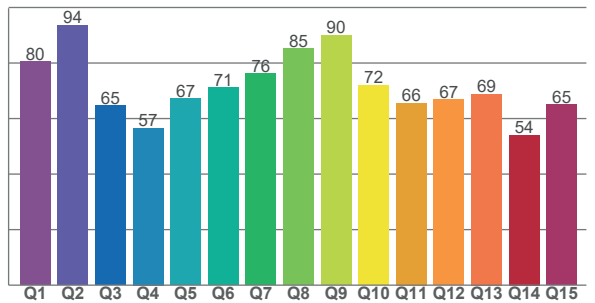
TM30 C values, 16 binned values out of total of 99 C values

C1	C2	C3	C4	C5	C6	C7	C8	C9	C10	C11	C12	C13	C14	C15	C16
64.5	69.2	66.4	69.5	77.7	86.7	89.8	76.5	75.8	63.7	47.7	74.6	81.7	74.6	68.3	74.6

CQS Q values

Q1	Q2	Q3	Q4	Q5	Q6	Q7	Q8	Q9	Q10	Q11	Q12	Q13	Q14	Q15
80.4	93.6	64.7	56.6	67.1	71.1	76.1	85.1	90.0	72.0	65.6	66.7	68.9	54.1	65.0

CQS: 69.7



## Color parameters

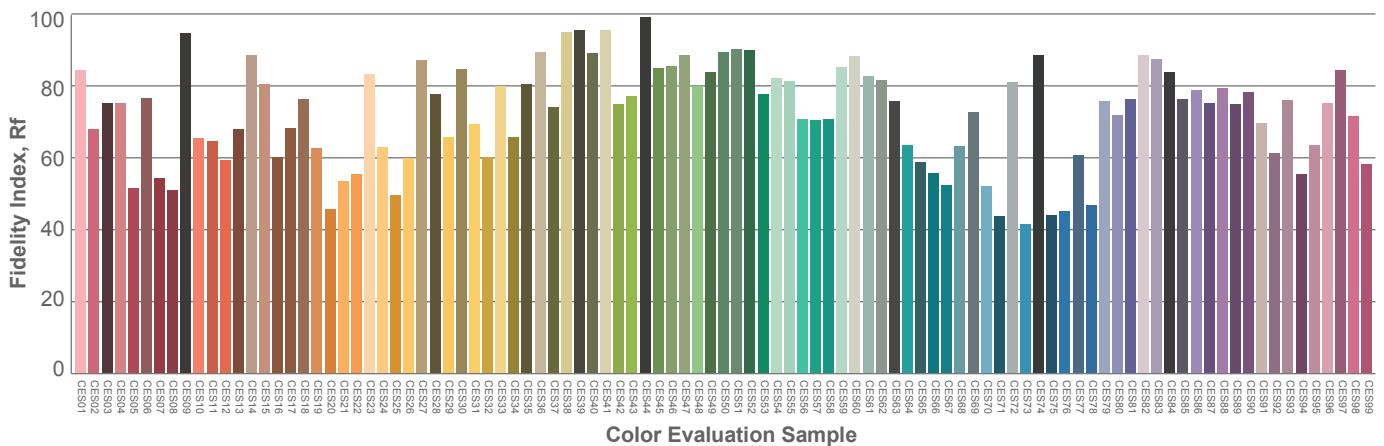
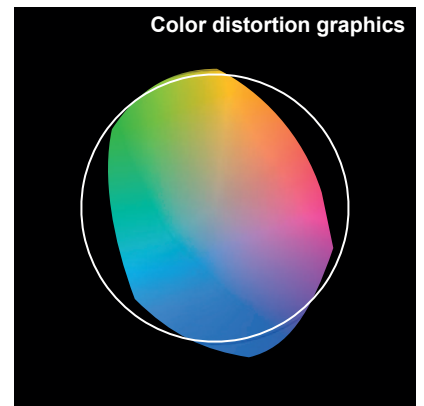
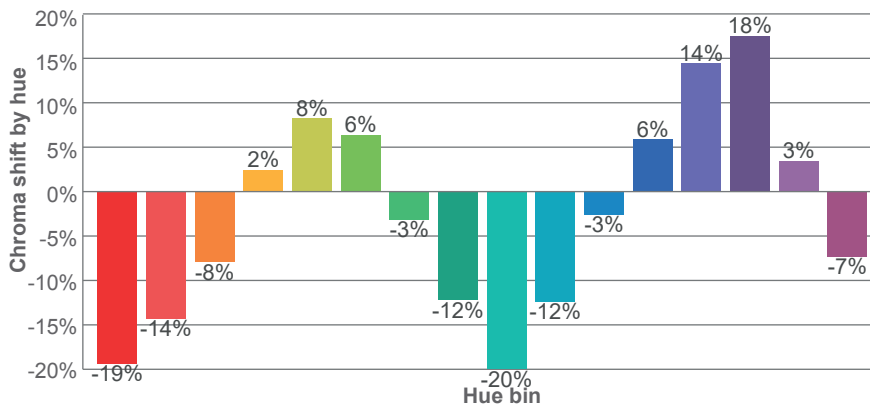
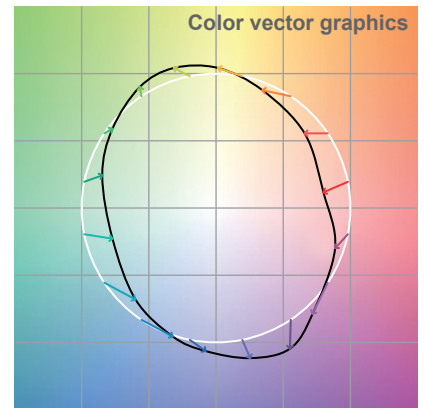
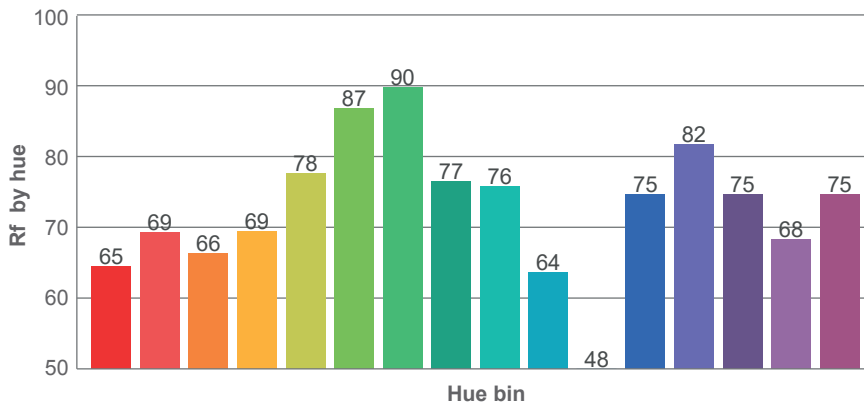
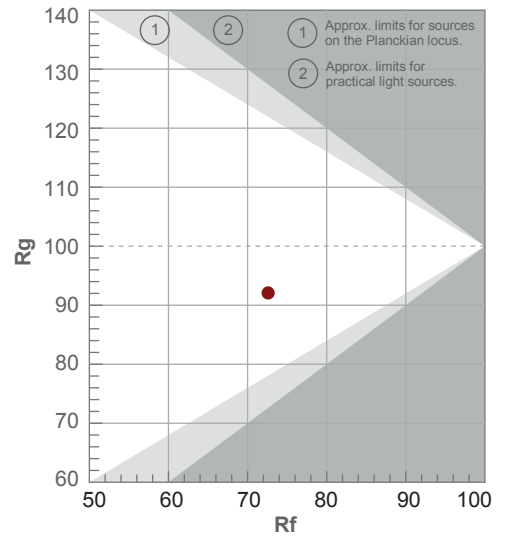
Color temperature	Color rendering index	Red component	Color fidelity	Color gamut	Color quality scale	Color coordinate cie 1931	Color coordinate cie 1931	Color coordinate	Color coordinate	Color deviation from black body
CCT	CRI	CRI R9	TM30 Rf	TM30 Rg	CQS	x	y	u	v	Δuv
7278 K	70.9	-40.8	72.6	92.1	69.7	0.301	0.322	0.192	0.308	0.0026

# TM-30 DETAILS

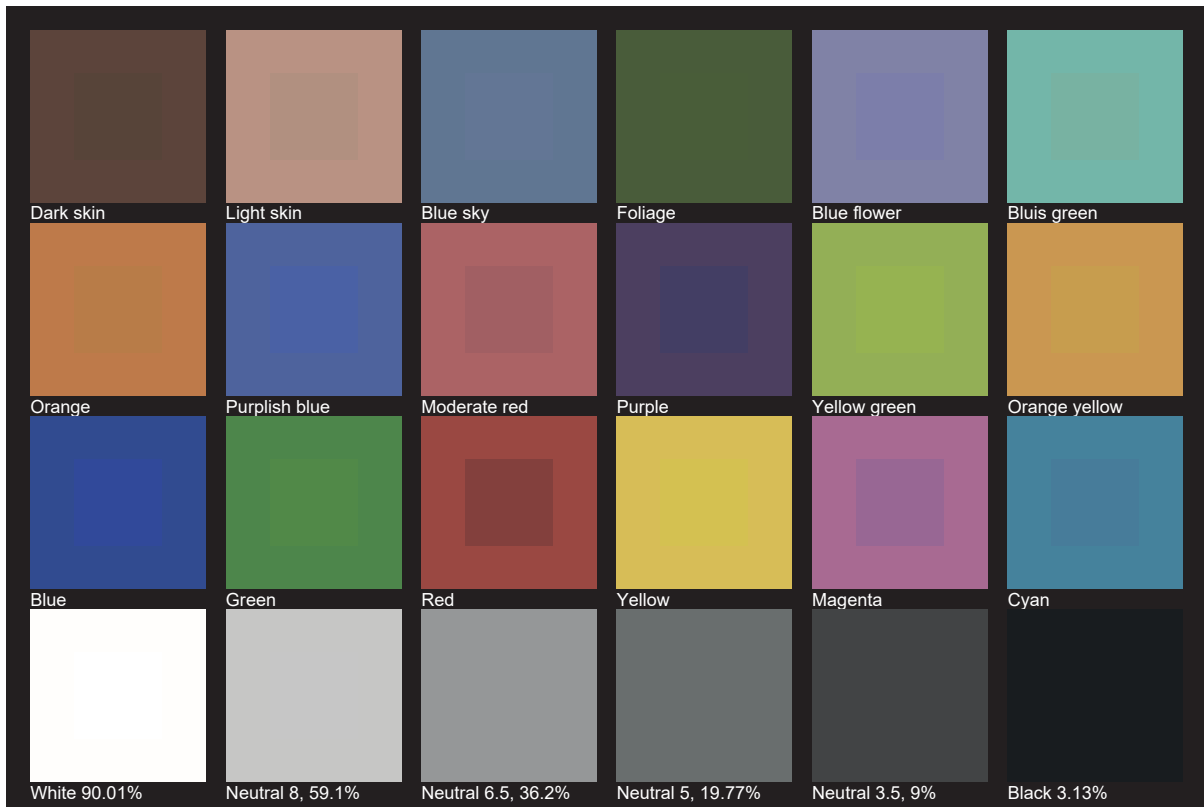
**Rf 72.6**  
Fidelity index Rf

**Rg 92.1**  
Gamut index Rg

Hue Bin	R <sub>f</sub>	Shifts (%)	
		Chroma	Hue
1	65	-19%	-4%
2	69	-14%	10%
3	66	-8%	20%
4	69	2%	19%
5	78	8%	10%
6	87	6%	-3%
7	90	-3%	-6%
8	77	-12%	-7%
9	76	-20%	7%
10	64	-12%	23%
11	48	-3%	26%
12	75	6%	13%
13	82	14%	3%
14	75	18%	-12%
15	68	3%	-26%
16	75	-7%	-12%



# TLCI 48







**AYRTON**

Digital Lighting