

MAGICRING-R9



AYRTON
Digital Lighting

MAGICRING-R9 CREATIVE SOLUTIONS

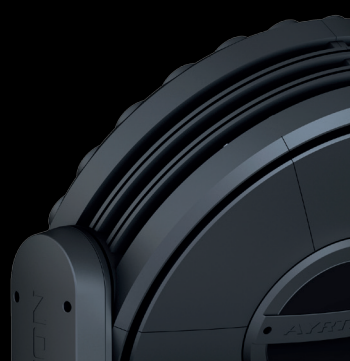
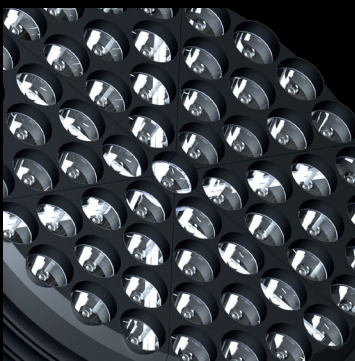
MAGICRING™R9 is the most powerful and extravagant luminaire in the RADICAL™ range. With an overall flux of 26,000 lumen and a centre beam intensity of more than 2,730,000 candela, it is reserved for extreme and unique uses and the creation of special effects.

MAGICRING™R9 is also the most RADICAL™ in terms of its dimensions. Sixty-one 15 Watt RGBW LED sources are arranged in four rings with the gap between the optics reduced to a minimum. The power, beam concentration, point-by-point control over each luminous source and the layout of the LED rings provide numerous new graphic options including multi-colour volumetric modelling of the beam.



Just like its little brother MAGICRING™R1, MAGICRING™R9 offers double continuous rotation on the pan/tilt axes, controlled by powerful three-phase stepper motors – features it shares with MAGICBLADE™R, MAGICPANEL™R and others in the RADICAL™ range.

MAGICRING™R9 offers several control modes depending on the user's choice and programming constraints. The reduced mode limits the number of control channels to 18 whilst providing access to a library of preprogrammed effects; the extended 256-channel mode enables the user to access all the functionalities with individual control over each light source. MAGICRING™R9 benefits from extensive line connectivity and can be controlled by DMX-RDM, Art-Net™ or through the LumenRadio™ DMX-RDM wireless connection.





OPTICS

- Beam aperture: 4,5°
- 85% optic efficiency
- High-efficiency 67 mm PMMA optics

LIGHT SOURCE

- 61 multi-chip 15 Watt LED sources
- Light output: up to 26,000 lumen
- Luminous intensity: 2,730,000 cd
- Rated sources life: up to 50,000 hours
- Flicker free sources management, suitable for TV applications and all video recorded events

MOVEMENT

- Continuous pan and tilt rotation
- Extremely accurate positioning
- Moving-head operated via either 8 or 16 bit resolution
- High-resolution stepper motors operated via microprocessors ensure extreme accuracy and smooth movements.
- Pan and tilt automatic repositioning

COLOURS

- Sophisticated 4 colours RGBW mixed, reaching high Colour Rendering Index
- Uniform light beam with no colour shadows, and rich saturated and pastel colour-hues
- 4.29 billion colours (8 bit resolution)
- Virtual colour wheel, including most usuals white colour temperature presets
- Dynamic colour macro effect with variable speed

DIMMER / STROBE

- Electronic dimmer, allowing perfect light adjustment from 0 to 100% without colour variation
- White or colour strobe effect, with speed adjustment from 1 to 25 flashes per second

SOFTWARE FACILITIES

- Local DMX addressing of the luminaire and its optional parameters through its built-in LCD panel control
- Remote DMX addressing of the luminaire and its optional parameters through a standard RDM DMX controller
- Built-in pattern effects with speed and fade controls for scenic applications
- Information menu including hour counter, temperature, software version

HARDWARE FACILITIES

- Graphic LCD display for addressing and special functions settings, with flip function
- 6 menu buttons to set the functions
- Over temperature protection
- Integrated LumenRadio's wireless CRMX RDM receiver
- XLR 5 pin male and female connectors for DMX connection
- Ethercon RJ45 IN / OUT connectors for ArtNet & sACN connection
- PowerCON TRUE1 male and female connectors for power connection

CONTROL

- DMX 512 protocol, through DMX cable or wireless system
- DMX-RDM compatible
- Stand-alone mode and Master/Slave modes
- ArtNet & sACN protocol through Ethernet cable
- Local control panel, with LCD display
- DMX 512 Input / Output through XLR5 connectors
- Choice of 3 DMX modes (from 18 to 260 DMX channels)

POWER SUPPLY

- Electronic supply with active PFC
- 110 to 240 Volts - 50/60Hz
- Power 990 Watt max

COOLING SYSTEM

- Advanced cooling system
- Self adjusting variable speed fans for quiet operation (Auto mode)
- Selectable auto, stage & studio ventilation modes
- Safety protection against temperatures excesses

HOUSING

- Moving-head skeleton made of aluminium and steel metal plates
- Heatsinks in aluminium, satin finish
- Moulded covers in self-extinguishing fire retardant ABS PC (V0 class)
- Two sides handles for transportation
- IP20 protection rating
- Exterior finish: black (Carbon)

INSTALLATION

- Fastening brackets system: two Omega ¼ turn brackets designed for use with standard clamps
- Mounting points: four ¼ turn locking fittings allowing installation of Omega brackets on luminaire
- Safety cable attachment point

OPERATING PARAMETERS

- Operating positions: only vertically suspended or placed on the floor
- Maximum permitted ambient temperature (Ta max): 45°C (113°F)
- Minimum permitted ambient temperature (Ta min): -10°C (14°F)
- Minimum usage distance: 3.75 m (12.30 ft)

COMPLIANCE

EU (EMC)

- EN 55015 (2006) - EN 55015 A2 (2009)
- EN 61547 (2009) - EN 61000-3-2 (2006)
- EN 61000-3-2 A2 (2009) - EN 61000-3-3 (2008)

EU (LVD)

- EN 60598-1 (2008) - EN 60598-2-17 (1989)
- EN 60598-2-17 A2 (1991)

SIZE

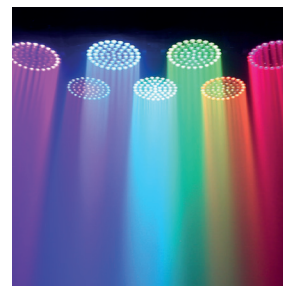
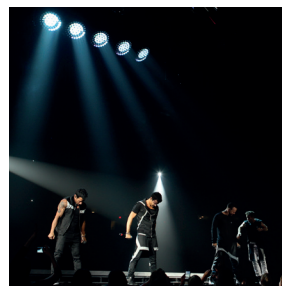
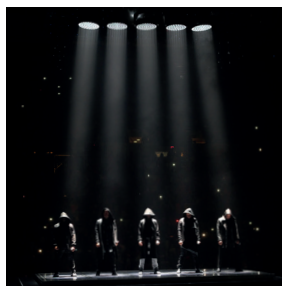
- Product: 718 x 866 x 328 mm (l x h x d)

WEIGHT

- Product: 48.7 KG

PRODUCT CODES

- 015950: MAGICRING-R9 CREATIVE SOLUTION





www.ayrton.eu