



# BORA TC

PHOTOMETRY



**AYRTON**  
Digital Lighting





<b>Total Flux</b>	31468 lm (@zoom 128, integrating sphere measurement, Fan mode auto)
-------------------	---

<b>CCT @LED engin</b>	7000 (±500K)
<b>CCT @open</b>	6200 (±500K)
<b>Ra @open</b>	90 (±2)
<b>TLCI</b>	90
<b>TM-30</b>	Rf: 87.1 Rg: 93.3

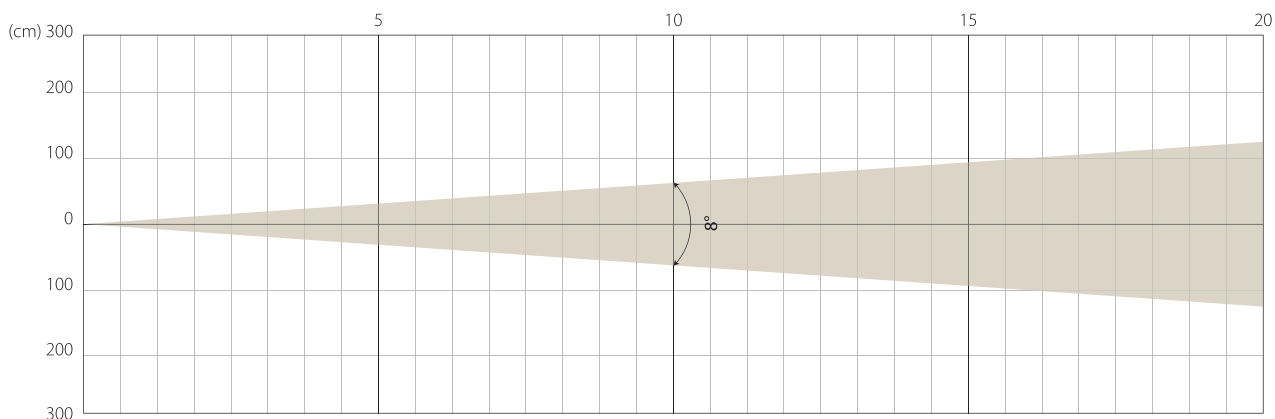
<b>Fan Mode</b>	<b>Noise Level (dBA)</b>	<b>by Goniometer (lm)</b>	<b>by Sphere (lm)</b>
<b>Auto</b>	45,6	27691	31116
<b>Stage</b>	51,5	28745	31468
<b>Silence</b>	43,2	19804	24001
<b>Super Silence</b>	34,4	13173	15773

Note: noise measured @1m distance, static status, ambient 31 dBA.

<b>Voltage / Power</b>	120-240V, 50-60Hz	1150 W
<b>Fixture Dimension / Weight</b>	494 x 737x 280 mm	37.8 kg
<b>Packing Dimension / Weight</b>	660 x 675 x 560 mm	55 kg

MIN ZOOM

## Beam Opening

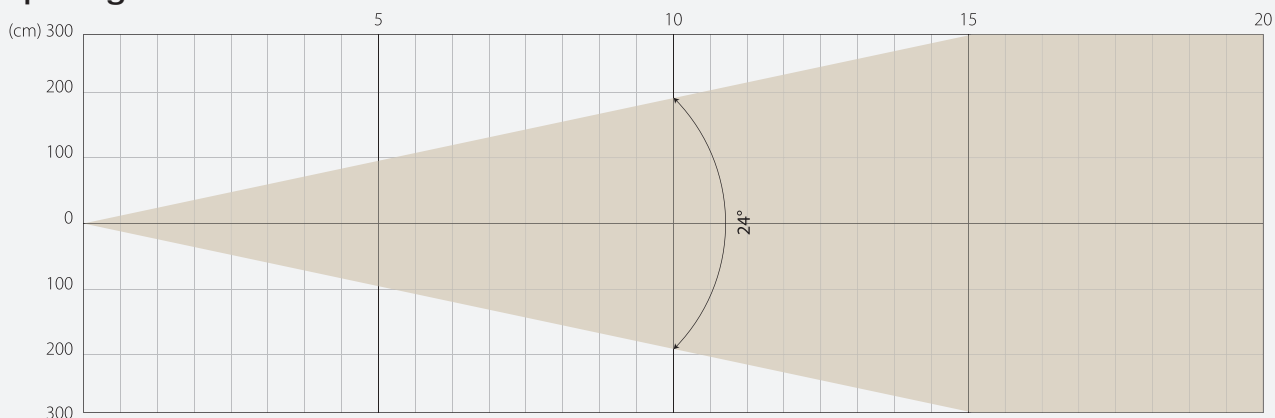


## Intensity

Distance (m)	5		10		15		20	
unit	lux	diameter	lux	diameter	lux	diameter	lux	diameter
White	60672	0,7	15168	1,4	6741	2,1	3792	2,8

MIDDLE ZOOM

## Beam Opening

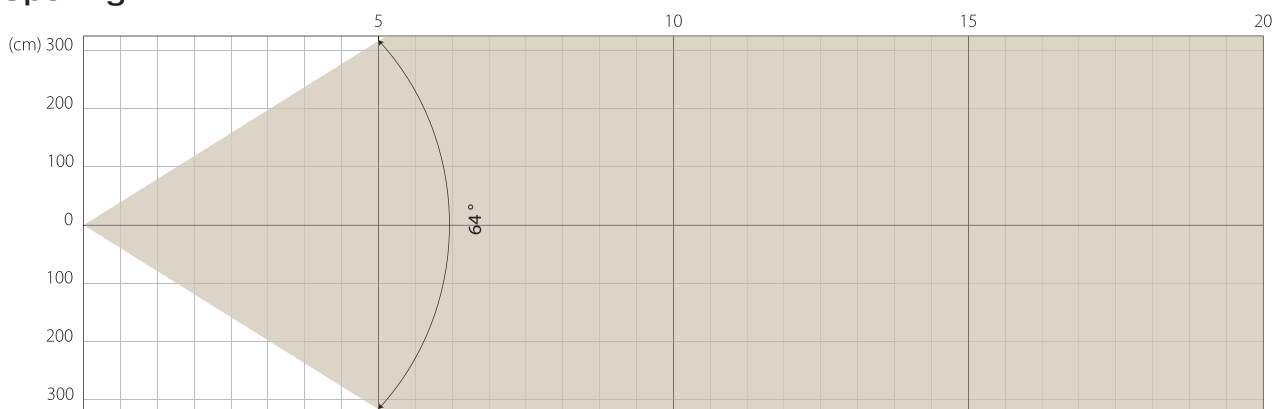


## Intensity

Distance (m)	5		10		15		20	
unit	lux	diameter	lux	diameter	lux	diameter	lux	diameter
White	8448	2,13	2112	4,25	939	6,38	528	8,5

MAX ZOOM

## Beam Opening



## Intensity

Distance (m)	5		10		15		20	
unit	lux	diameter	lux	diameter	lux	diameter	lux	diameter
White	1501	6,25	375	12,5	167	18,75	94	24,99

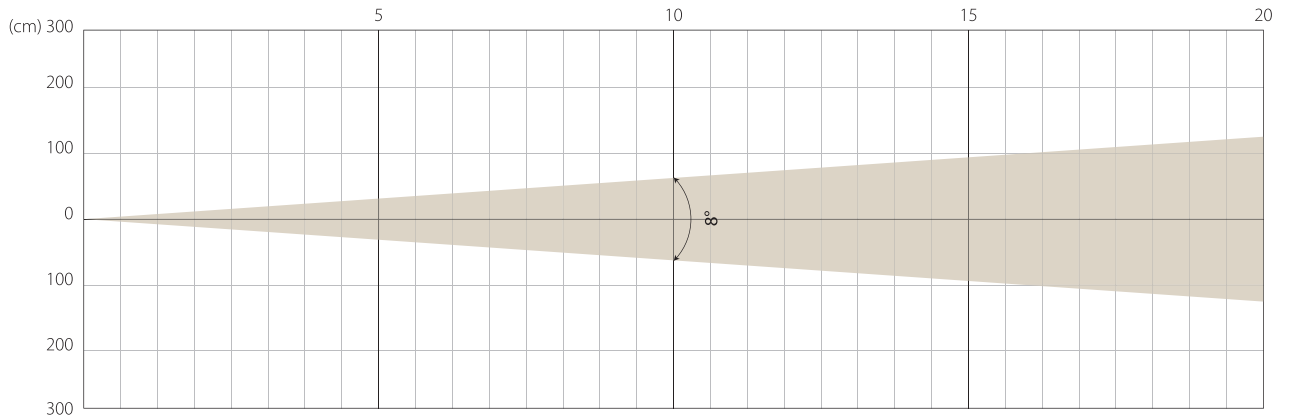
Note: Measurement done with Goniometer

# STAGE MODE

NATIVE CRI GREATER THAN 90

MIN ZOOM

## Beam Opening

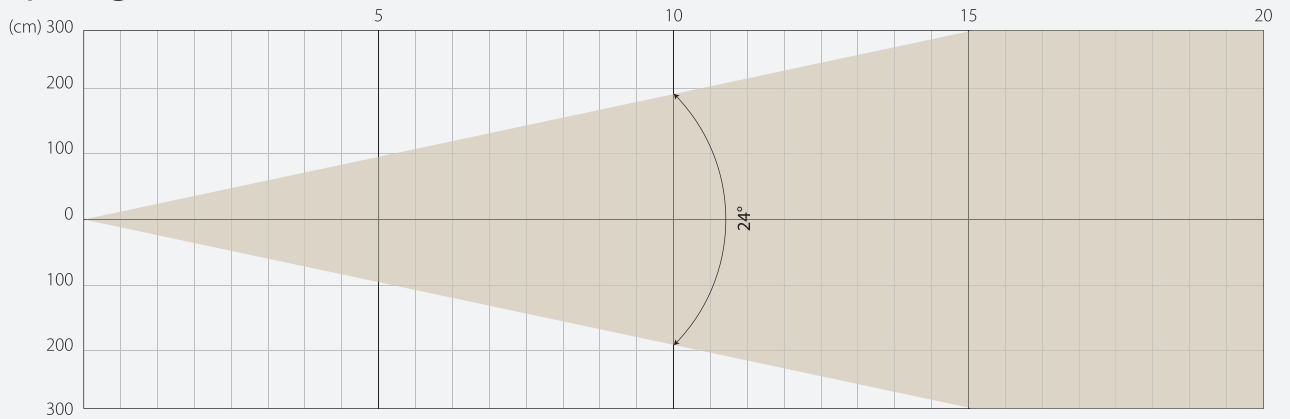


## Intensity

Distance (m)	5		10		15		20	
unit	lux	diameter	lux	diameter	lux	diameter	lux	diameter
White	62260	0,7	15565	1,4	6918	2,1	3891	2,8

MIDDLE ZOOM

## Beam Opening

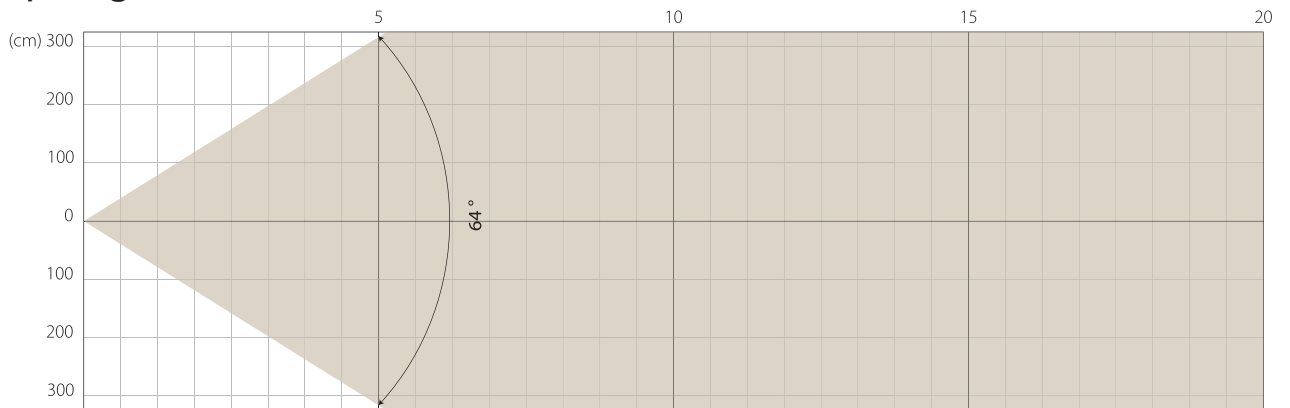


## Intensity

Distance (m)	5		10		15		20	
unit	lux	diameter	lux	diameter	lux	diameter	lux	diameter
White	8779	2,13	2195	4,25	975	6,38	549	8,5

MAX ZOOM

## Beam Opening



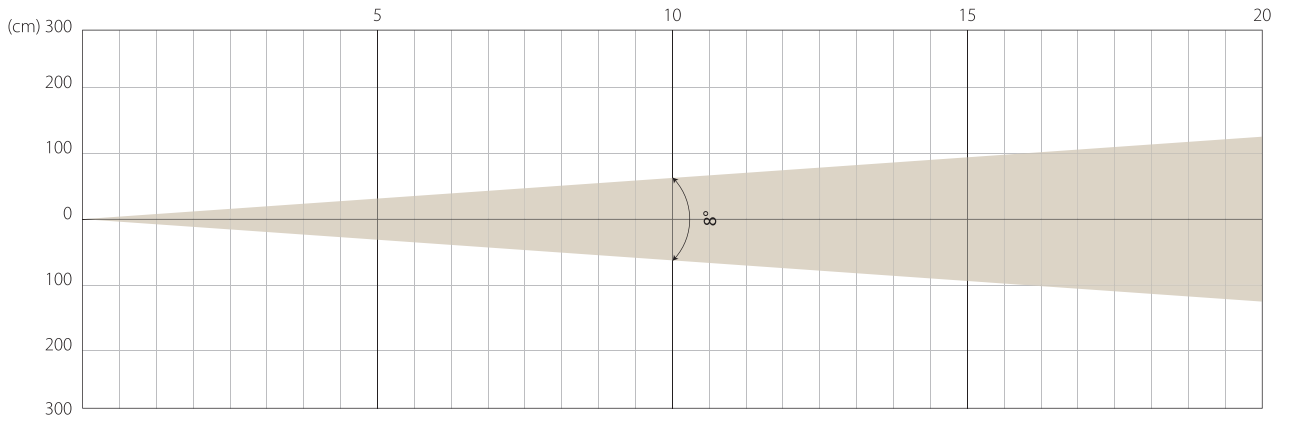
## Intensity

Distance (m)	5		10		15		20	
unit	lux	diameter	lux	diameter	lux	diameter	lux	diameter
White	1560	6,25	390	12,5	173	18,75	98	24,99

Note: Measurement done with Goniometer

MIN ZOOM

## Beam Opening

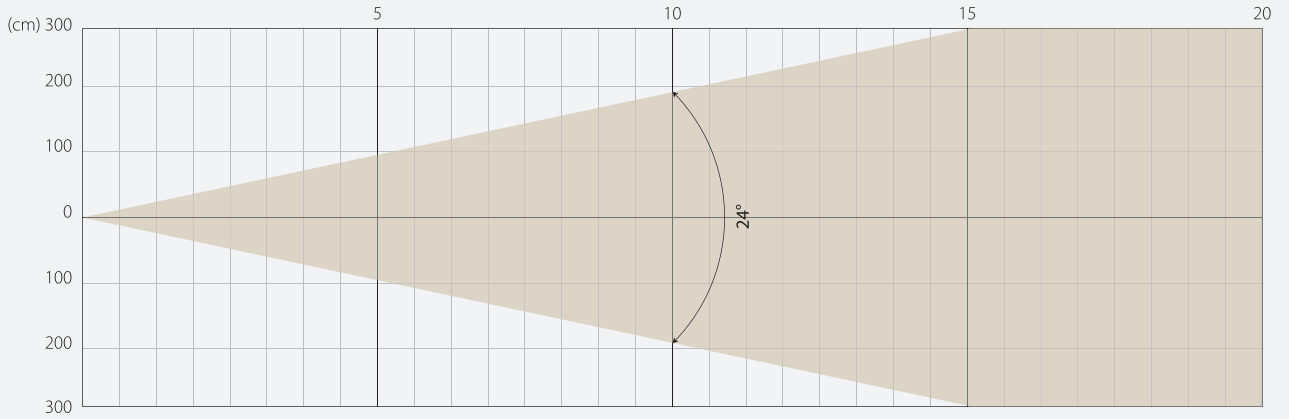


## Intensity

Distance (m)	5		10		15		20	
unit	lux	diameter	lux	diameter	lux	diameter	lux	diameter
White	44270	0,7	11068	1,4	4919	2,1	2767	2,8

MIDDLE ZOOM

## Beam Opening

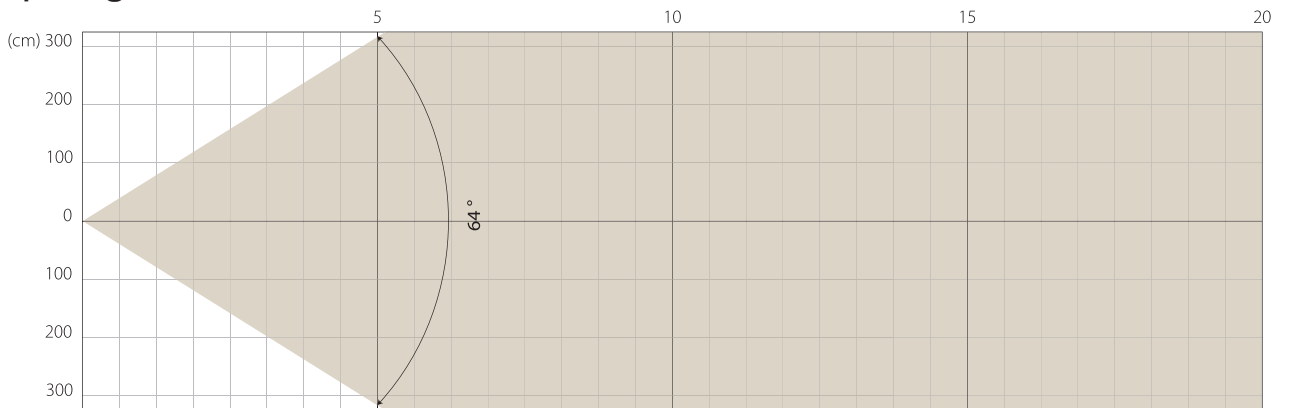


## Intensity

Distance (m)	5		10		15		20	
unit	lux	diameter	lux	diameter	lux	diameter	lux	diameter
White	6031	2,13	1508	4,25	670	6,38	377	8,5

MAX ZOOM

## Beam Opening



## Intensity

Distance (m)	5		10		15		20	
unit	lux	diameter	lux	diameter	lux	diameter	lux	diameter
White	1062	6,25	265	12,5	118	18,75	66	24,99

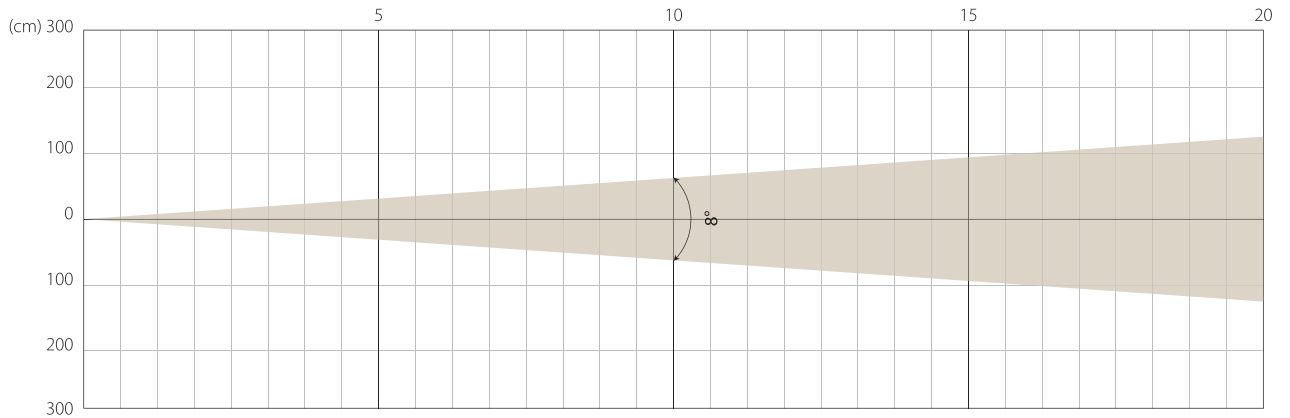
Note: Measurement done with Goniometer

# SUPER SILENCE MODE

NATIVE CRI GREATER THAN 90

MIN ZOOM

## Beam Opening

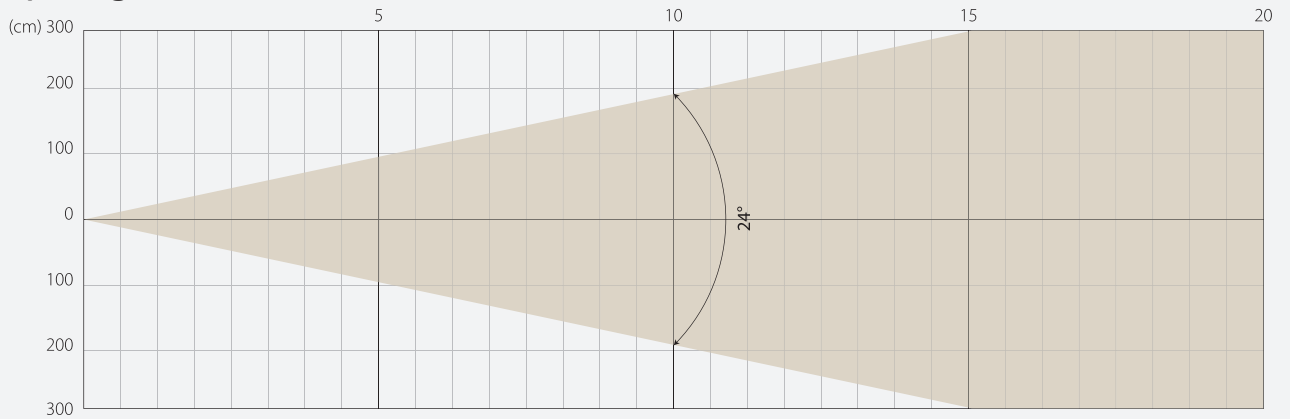


## Intensity

Distance (m)	5		10		15		20	
unit	lux	diameter	lux	diameter	lux	diameter	lux	diameter
White	29519	0,7	7380	1,4	3280	2,1	1845	2,8

MIDDLE ZOOM

## Beam Opening

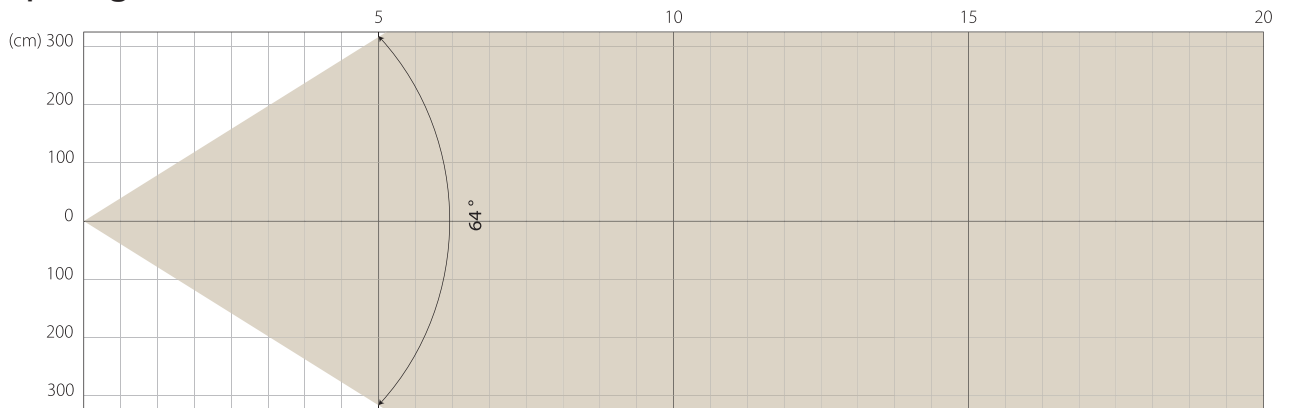


## Intensity

Distance (m)	5		10		15		20	
unit	lux	diameter	lux	diameter	lux	diameter	lux	diameter
White	3988	2,13	997	4,25	443	6,38	249	8,5

MAX ZOOM

## Beam Opening

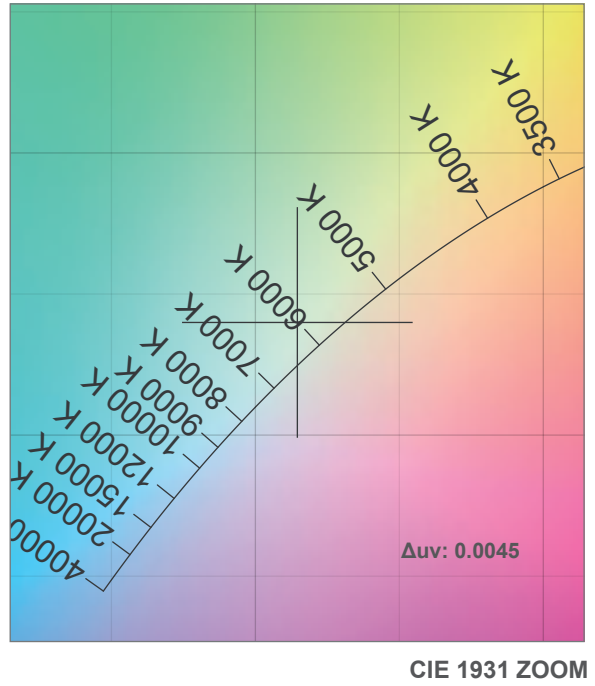
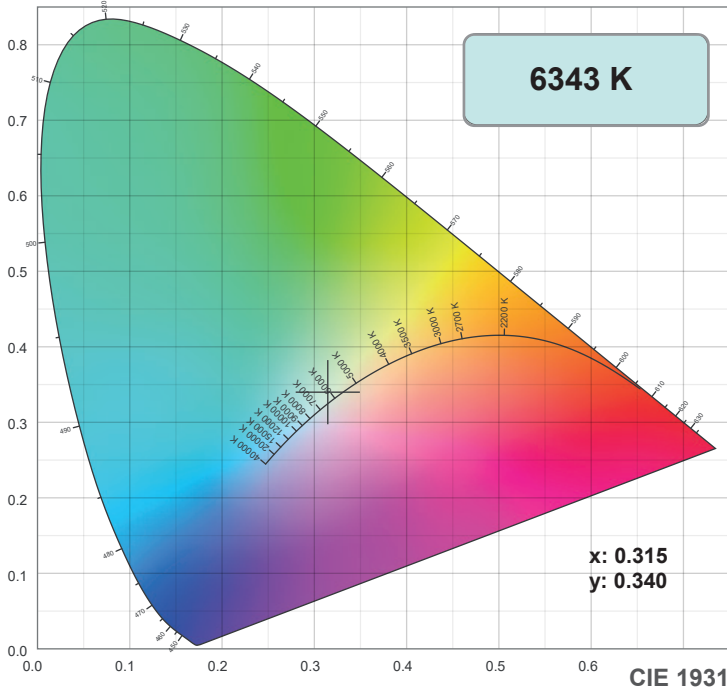


## Intensity

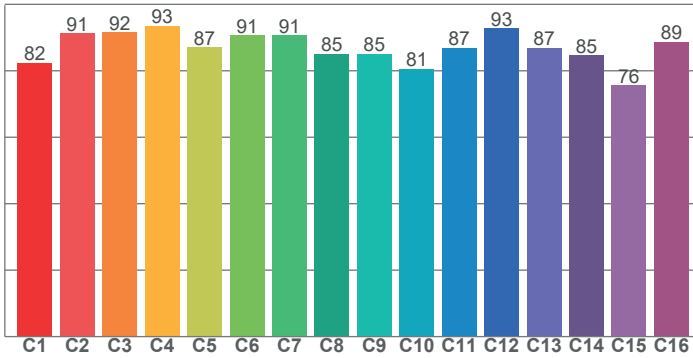
Distance (m)	5		10		15		20	
unit	lux	diameter	lux	diameter	lux	diameter	lux	diameter
White	707	6,25	177	12,5	79	18,75	44	24,99

Note: Measurement done with Goniometer

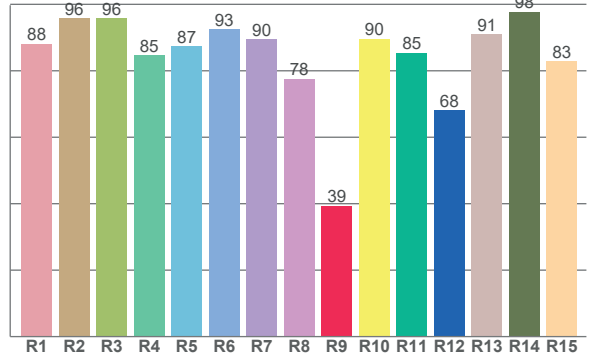
# COLOR DETAILS



TM-30: 87.1



CRI: 89.0 (R1-R8)



CRI R values, only R1-R8 are used to calculate final CRI value

R1	R2	R3	R4	R5	R6	R7	R8	R9	R10	R11	R12	R13	R14	R15
88.2	95.8	95.9	84.6	87.4	92.6	89.6	77.6	39.4	89.7	85.4	68.0	91.0	97.8	82.9

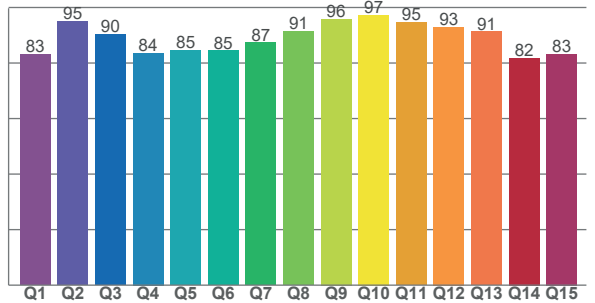
TM30 C values, 16 binned values out of total of 99 C values

C1	C2	C3	C4	C5	C6	C7	C8	C9	C10	C11	C12	C13	C14	C15	C16
82.4	91.3	91.5	93.5	87.1	90.7	90.7	85.0	85.1	80.7	86.8	92.8	86.9	84.7	75.6	88.6

CQS Q values

Q1	Q2	Q3	Q4	Q5	Q6	Q7	Q8	Q9	Q10	Q11	Q12	Q13	Q14	Q15
83.1	95.0	90.3	83.6	84.6	84.5	87.4	91.4	95.9	97.3	94.7	93.0	91.3	81.8	83.3

CQS: 88.0



## Color parameters

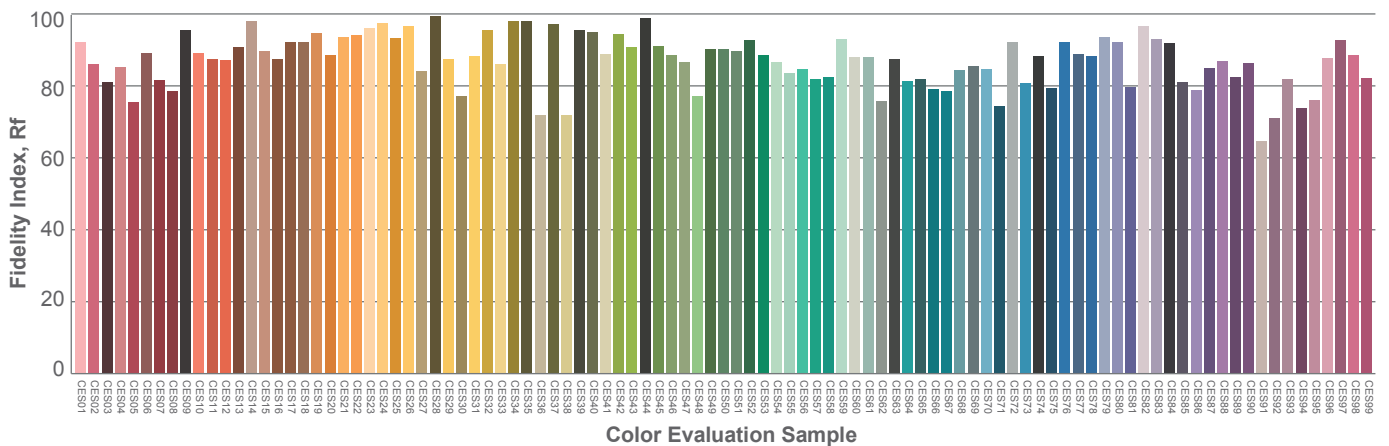
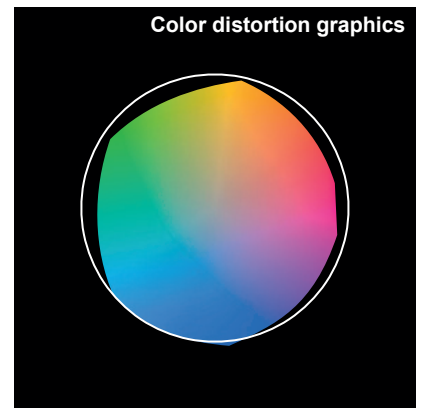
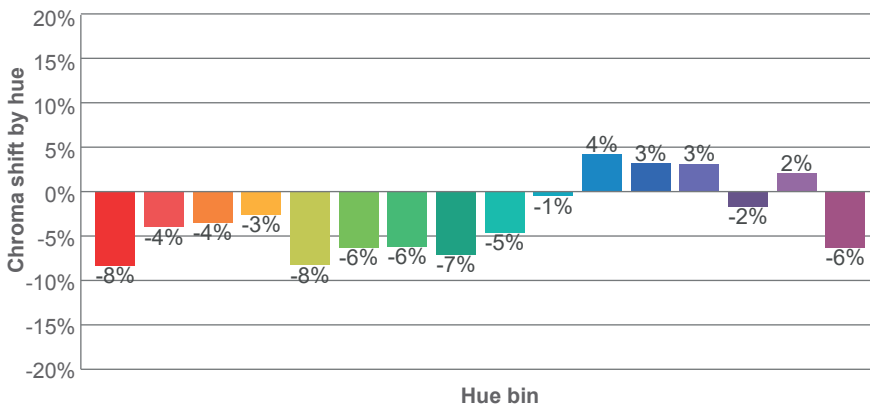
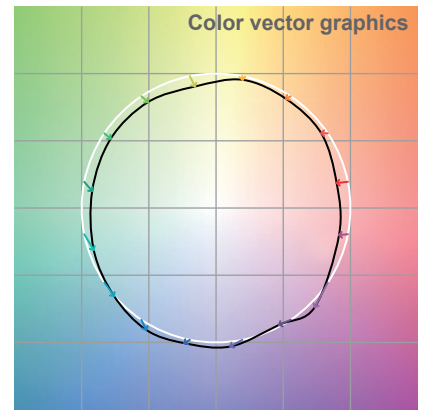
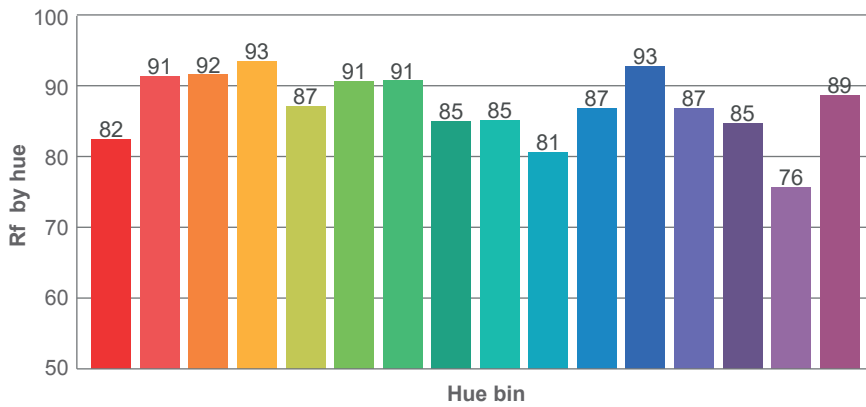
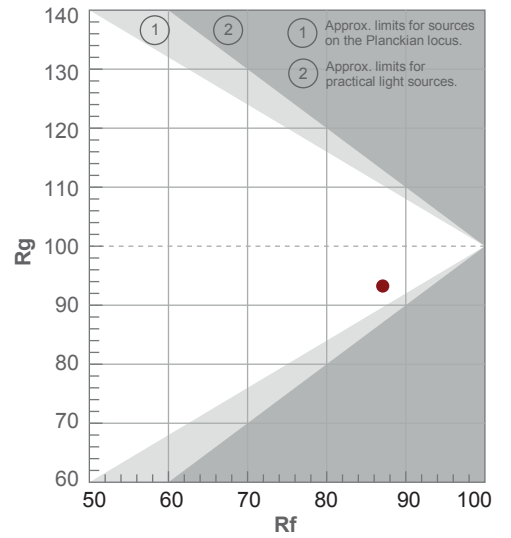
Color temperature	Color rendering index	Red component	Color fidelity	Color gamut	Color quality scale	Color coordinate cie 1931	Color coordinate cie 1931	Color coordinate	Color coordinate	Color deviation from black body
CCT	CRI	CRI R9	TM30 Rf	TM30 Rg	CQS	x	y	u	v	Δuv
6343 K	89.0	39.4	87.1	93.3	88.0	0.315	0.340	0.195	0.316	0.0045

# TM-30 DETAILS

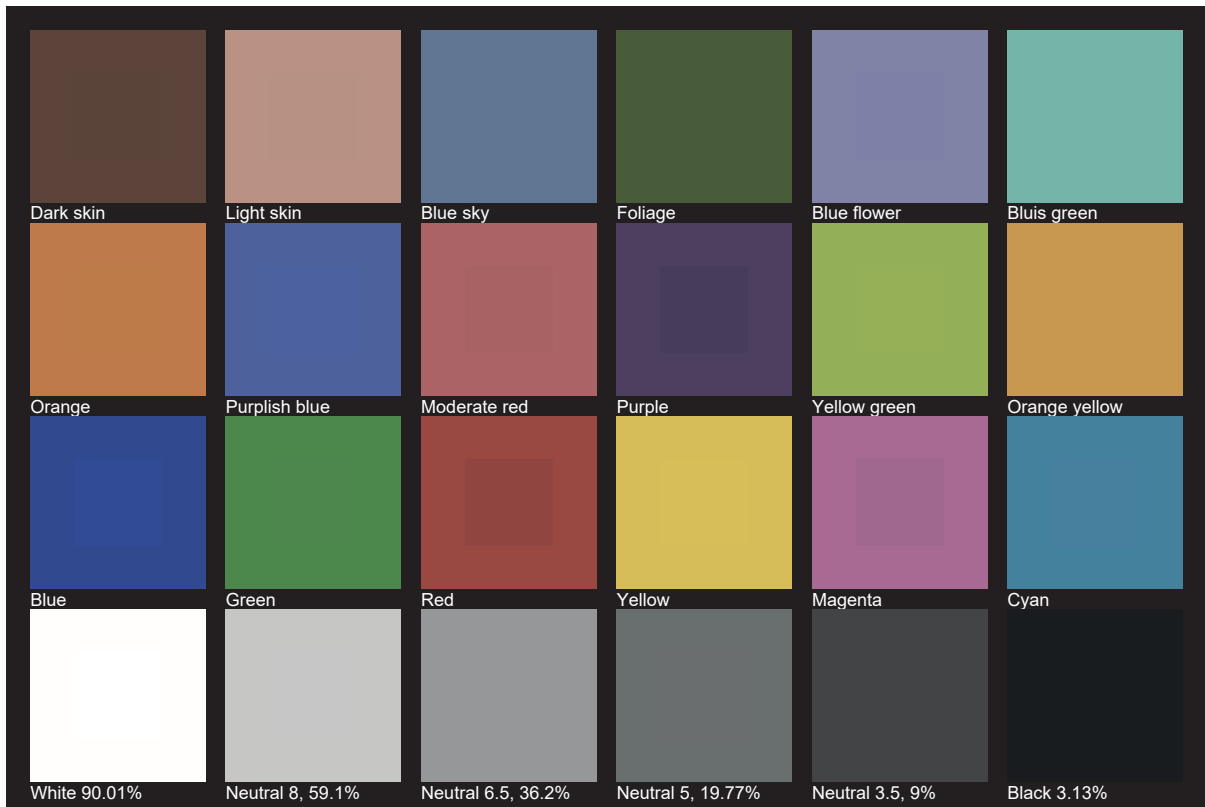
**Rf 87.1**  
Fidelity index Rf

**Rg 93.3**  
Gamut index Rg

Hue Bin	R <sub>f</sub>	Shifts (%)	
		Chroma	Hue
1	82	-8%	1%
2	91	-4%	3%
3	92	-4%	2%
4	93	-3%	-1%
5	87	-8%	-2%
6	91	-6%	-2%
7	91	-6%	1%
8	85	-7%	6%
9	85	-5%	13%
10	81	-1%	12%
11	87	4%	7%
12	93	3%	-4%
13	87	3%	-10%
14	85	-2%	-9%
15	76	2%	-21%
16	89	-6%	-2%



# TLCI 90







**AYRTON**

Digital Lighting