



# GHIBLI TC

PHOTOMETRY



**AYRTON**  
Digital Lighting





<b>Total Flux</b>	16846 lm (@zoom 128, integrating sphere measurement, Fan mode auto)
-------------------	---

<b>CCT @LED engin</b>	6500 (±500K)
<b>CCT @open</b>	5900 (±500K)
<b>Ra @open</b>	90 (±2)
<b>TLCI</b>	89
<b>TM-30</b>	Rf: 87.2 Rg: 95.2

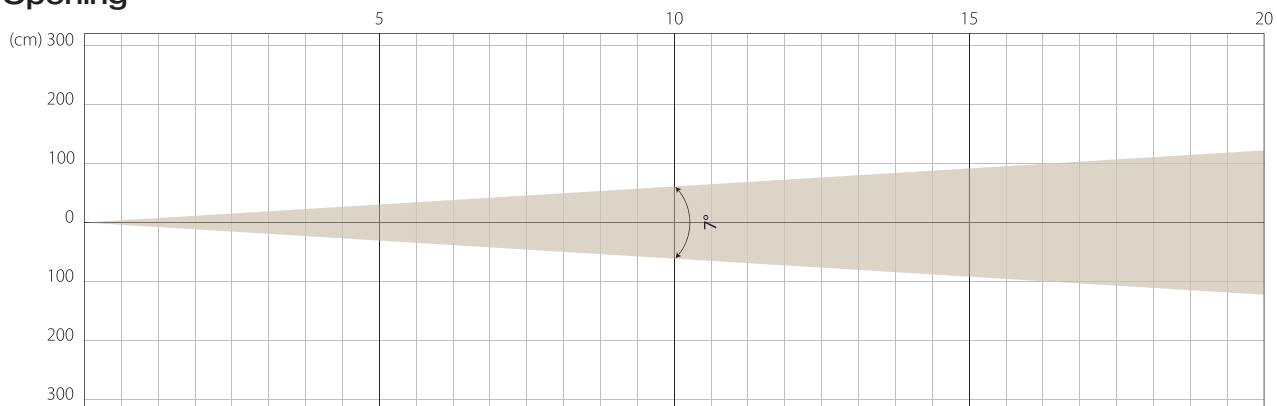
<b>Fan Mode</b>	<b>Noise Level (dBA)</b>	<b>by Goniometer (lm)</b>	<b>by Sphere (lm)</b>
<b>Auto</b>	45,5	14738	16701
<b>Stage</b>	47,6	15067	16846
<b>Silence</b>	39,4	11580	12799
<b>Super Silence</b>	34,5	9502	12012

Note: noise measured @1m distance, static status, ambient 31 dBA.

<b>Voltage / Power</b>	100-240V, 50-60HZ	800 W
<b>Fixture Dimension / Weight</b>	468 x 734 x 280 mm	35.6 kg
<b>Packing Dimension / Weight</b>	660 x 675 x 560 mm	52.6 kg

MIN ZOOM

### Beam Opening

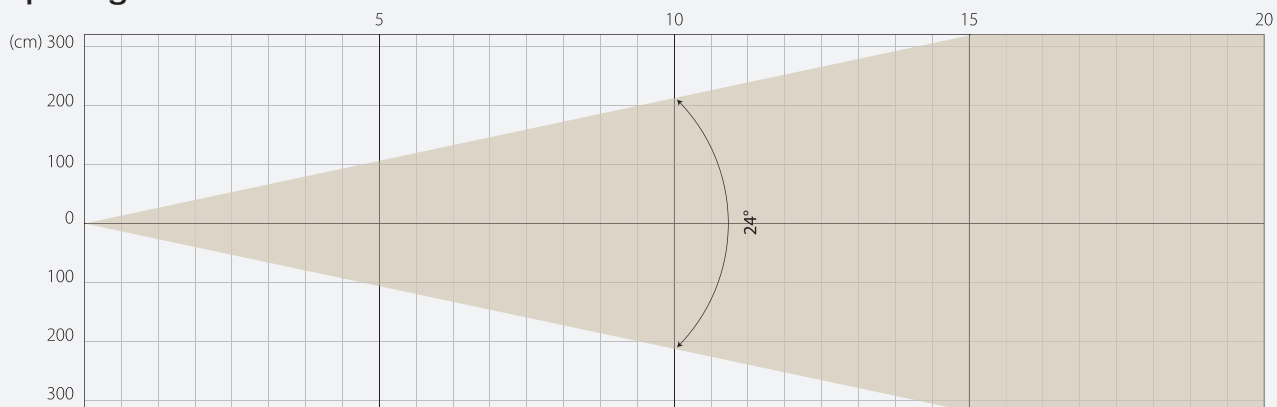


### Intensity

Distance (m)	5		10		15		20	
unit	lux	diameter	lux	diameter	lux	diameter	lux	diameter
White	36851	0,61	9213	1,22	4095	1,83	2303	2,45

MIDDLE ZOOM

### Beam Opening

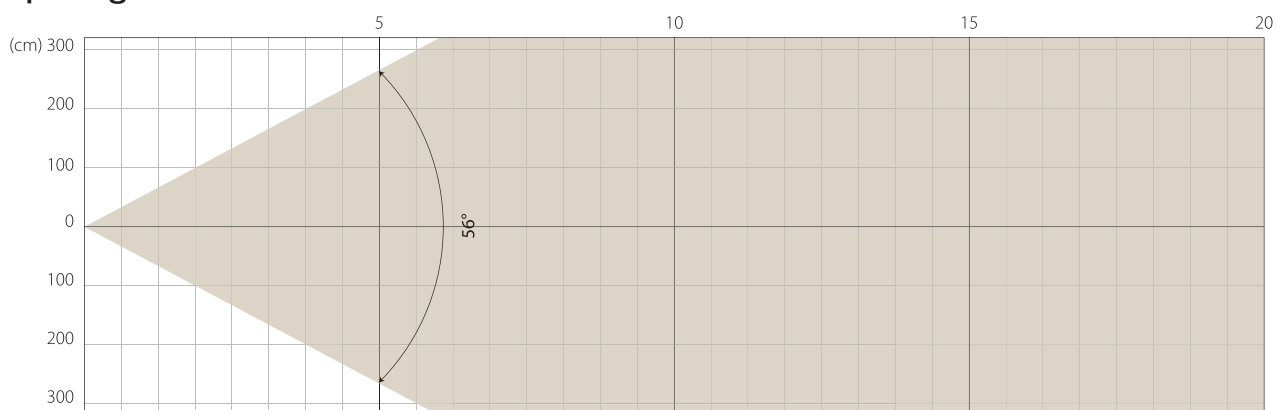


### Intensity

Distance (m)	5		10		15		20	
unit	lux	diameter	lux	diameter	lux	diameter	lux	diameter
White	5579	2,13	1395	4,25	620	6,38	349	8,5

MAX ZOOM

### Beam Opening



### Intensity

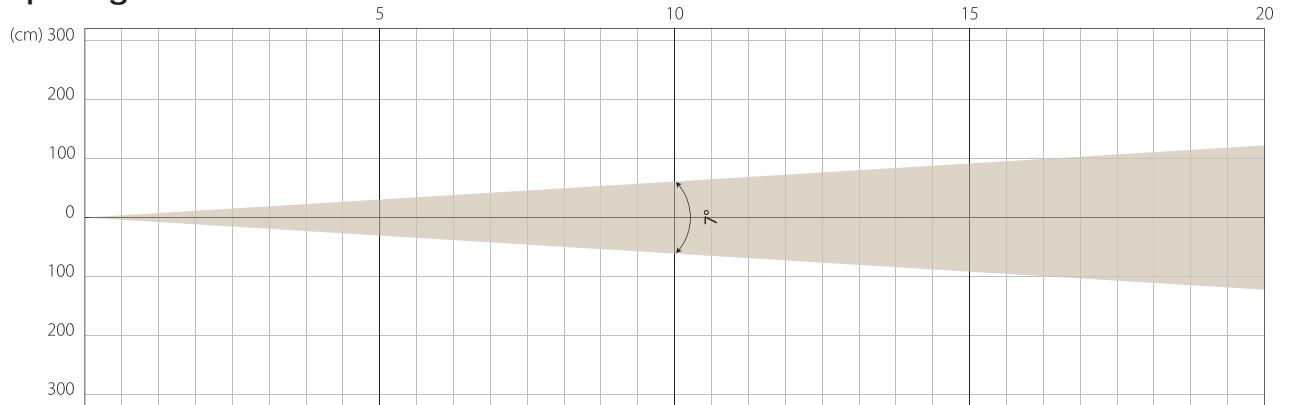
Distance (m)	5		10		15		20	
unit	lux	diameter	lux	diameter	lux	diameter	lux	diameter
White	981	5,32	245	10,63	109	15,95	61	21,27

# STAGE MODE

NATIVE CRI GREATER THAN 90

MIN ZOOM

## Beam Opening

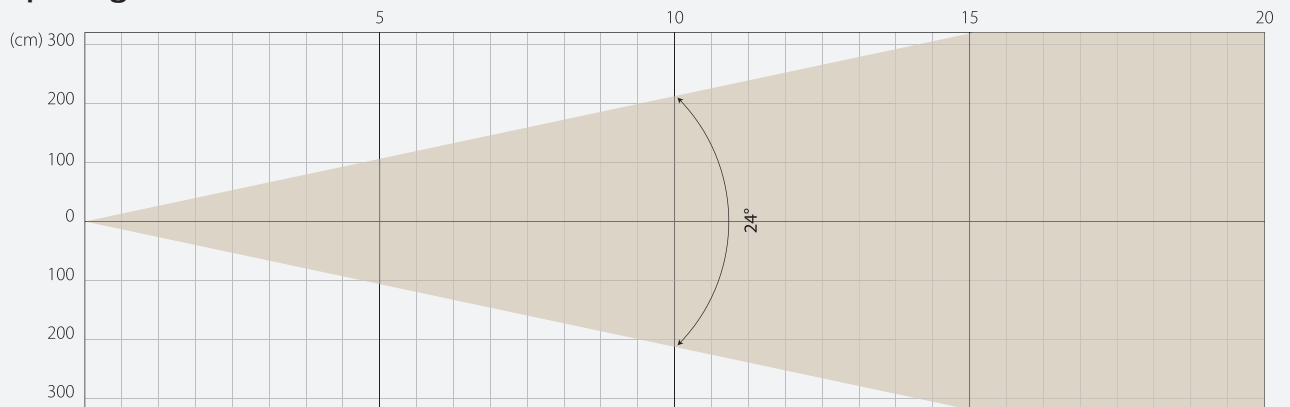


## Intensity

Distance (m)	5		10		15		20	
unit	lux	diameter	lux	diameter	lux	diameter	lux	diameter
White	37011	0,61	9253	1,22	4112	1,83	2313	2,45

MIDDLE ZOOM

## Beam Opening

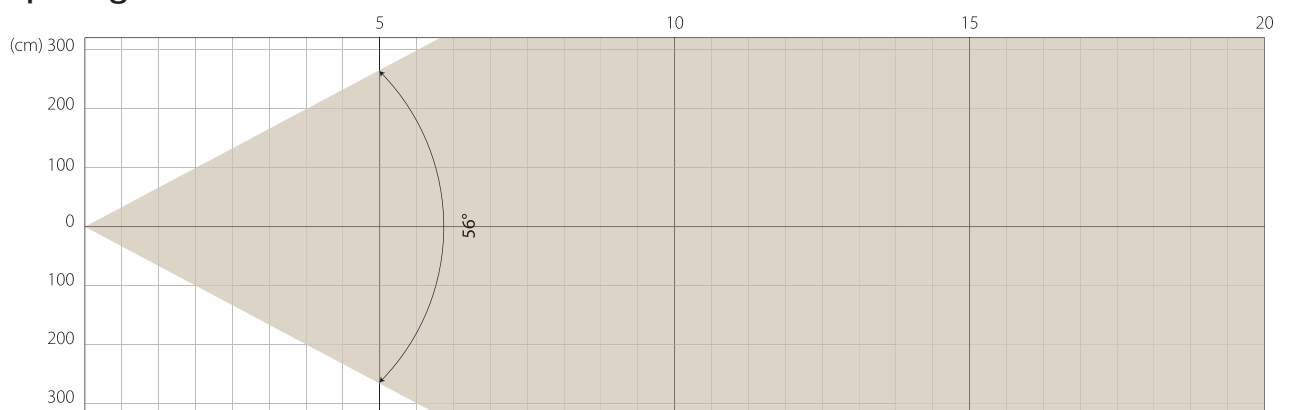


## Intensity

Distance (m)	5		10		15		20	
unit	lux	diameter	lux	diameter	lux	diameter	lux	diameter
White	5773	2,13	1443	4,25	641	6,38	361	8,5

MAX ZOOM

## Beam Opening

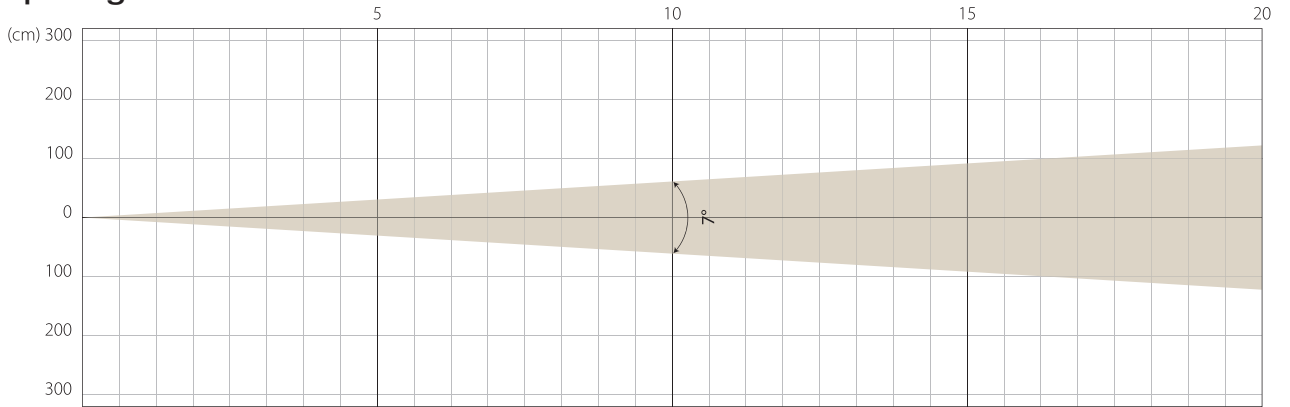


## Intensity

Distance (m)	5		10		15		20	
unit	lux	diameter	lux	diameter	lux	diameter	lux	diameter
White	1011	5,32	253	10,63	112	15,95	63	21,27

MIN ZOOM

### Beam Opening

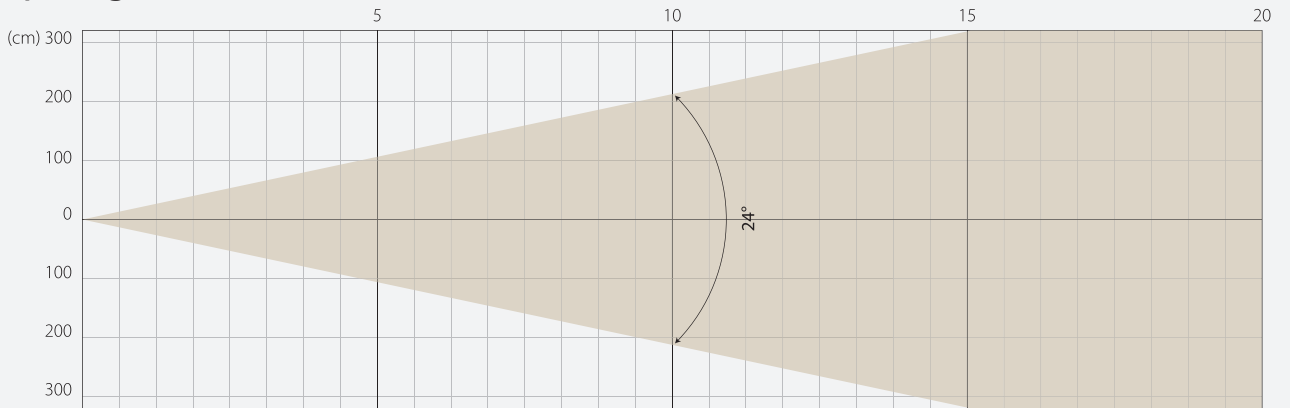


### Intensity

Distance (m)	5		10		15		20	
unit	lux	diameter	lux	diameter	lux	diameter	lux	diameter
White	28373	0,61	7093	1,22	3153	1,83	1773	2,45

MIDDLE ZOOM

### Beam Opening

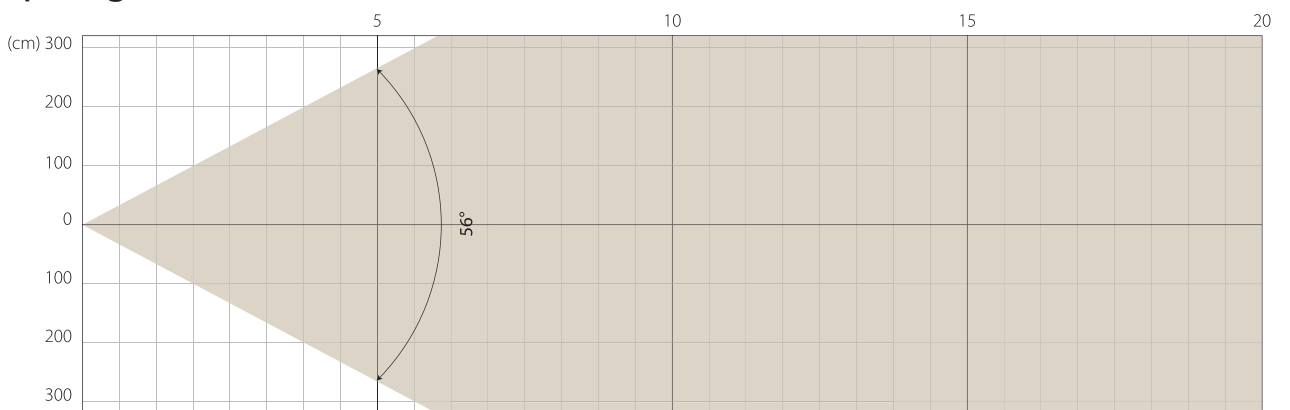


### Intensity

Distance (m)	5		10		15		20	
unit	lux	diameter	lux	diameter	lux	diameter	lux	diameter
White	4365	2,13	1091	4,25	485	6,38	273	8,5

MAX ZOOM

### Beam Opening



### Intensity

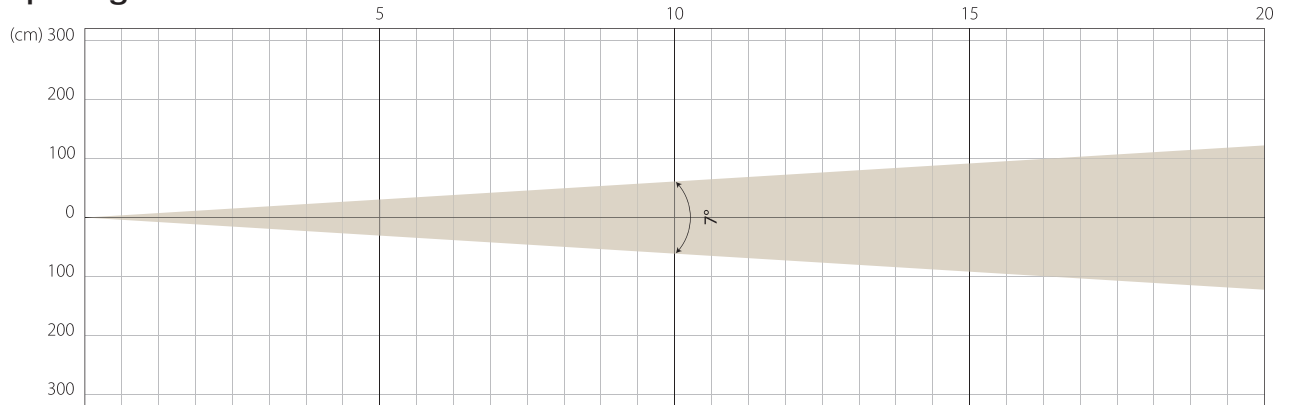
Distance (m)	5		10		15		20	
unit	lux	diameter	lux	diameter	lux	diameter	lux	diameter
White	768	5,32	192	10,63	85	15,95	48	21,27

# SUPER SILENCE MODE

NATIVE CRI GREATER THAN 90

MIN ZOOM

## Beam Opening

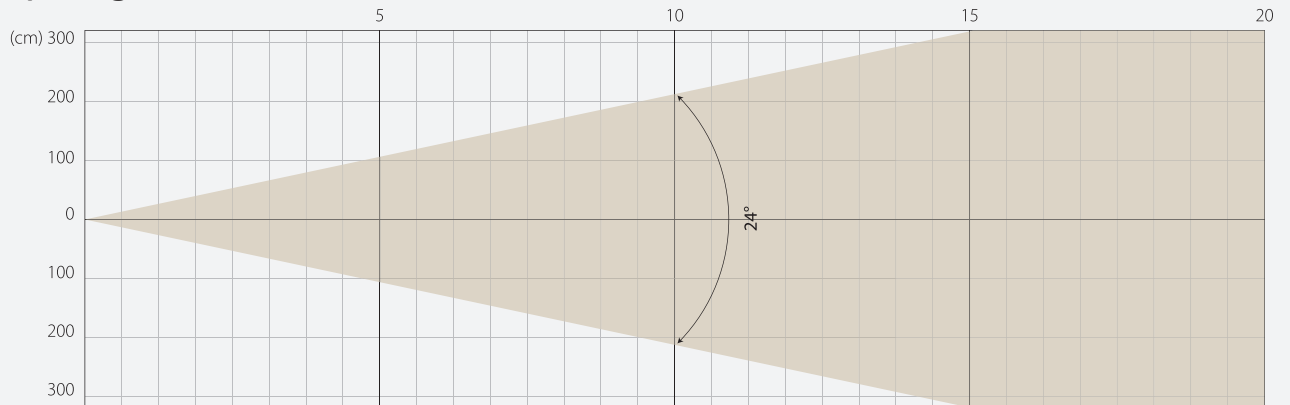


## Intensity

Distance (m)	5		10		15		20	
unit	lux	diameter	lux	diameter	lux	diameter	lux	diameter
White	23208	0,61	5802	1,22	2579	1,83	1451	2,45

MIDDLE ZOOM

## Beam Opening

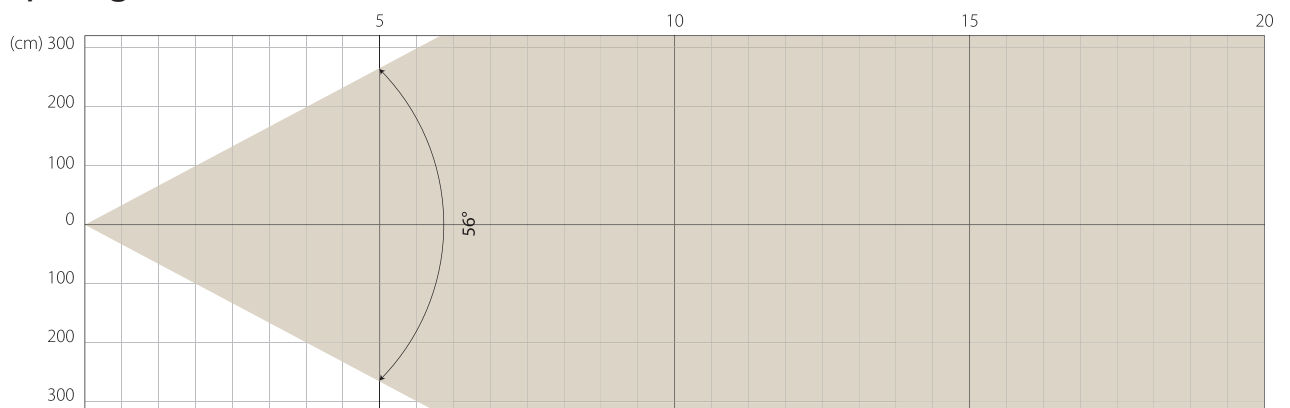


## Intensity

Distance (m)	5		10		15		20	
unit	lux	diameter	lux	diameter	lux	diameter	lux	diameter
White	3573	2,13	893	4,25	397	6,38	223	8,5

MAX ZOOM

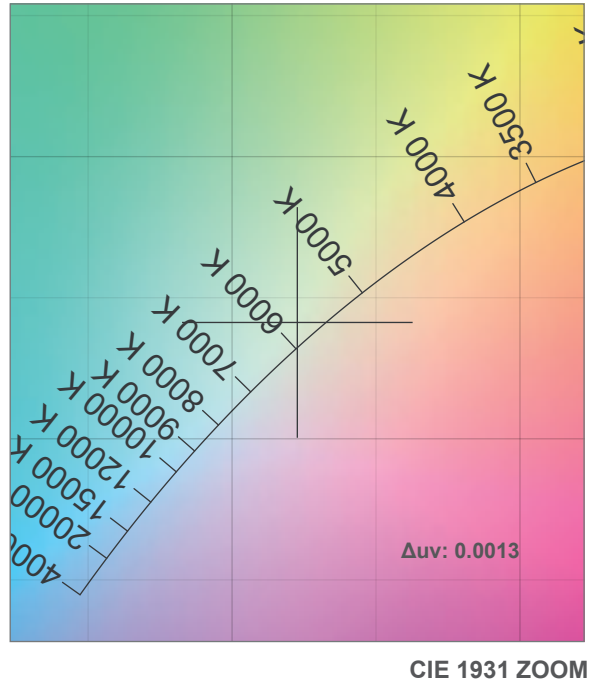
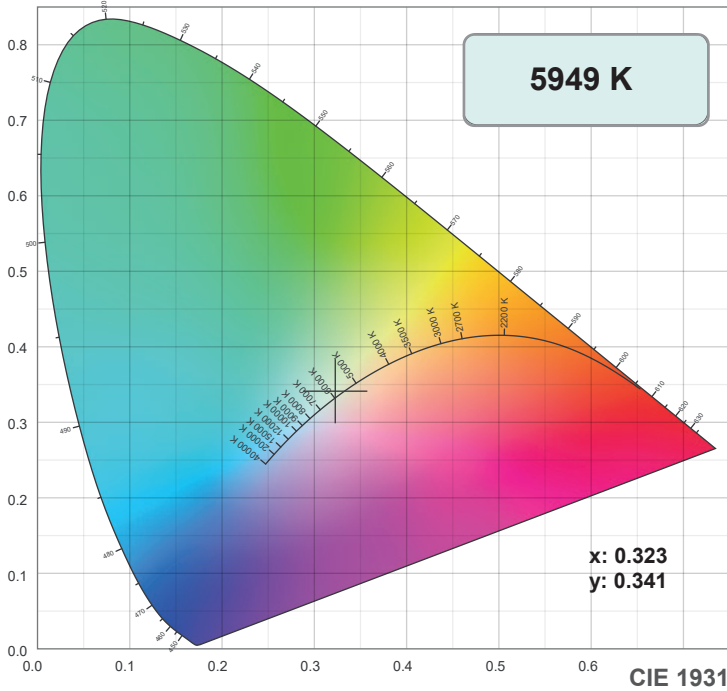
## Beam Opening



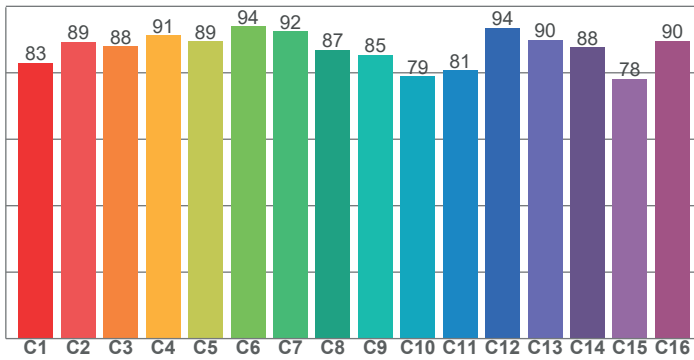
## Intensity

Distance (m)	5		10		15		20	
unit	lux	diameter	lux	diameter	lux	diameter	lux	diameter
White	626	5,32	156	10,63	70	15,95	39	21,27

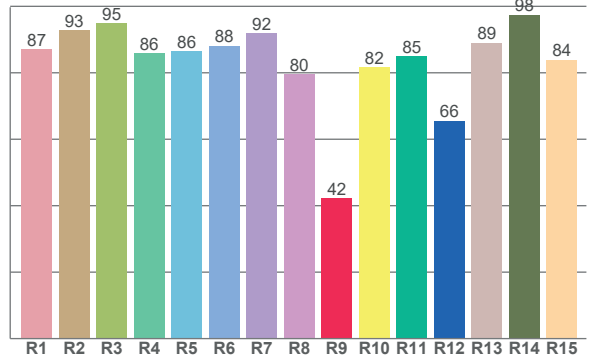
# COLOR DETAILS



TM-30: 87.2



CRI: 88.4 (R1-R8)



CRI R values, only R1-R8 are used to calculate final CRI value

R1	R2	R3	R4	R5	R6	R7	R8	R9	R10	R11	R12	R13	R14	R15
87.0	92.9	95.0	86.0	86.4	88.2	91.9	79.6	42.1	81.7	84.9	65.5	89.0	97.5	83.9

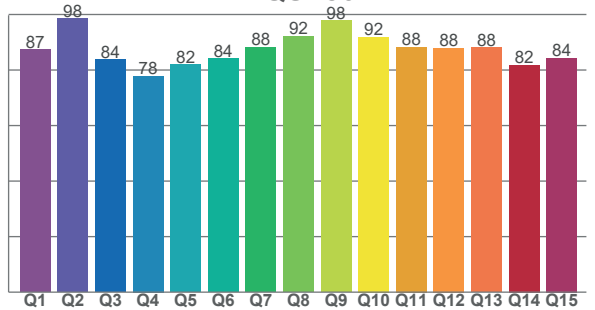
TM30 C values, 16 binned values out of total of 99 C values

C1	C2	C3	C4	C5	C6	C7	C8	C9	C10	C11	C12	C13	C14	C15	C16
83.0	89.4	87.9	91.3	89.4	93.9	92.4	86.9	85.3	79.0	80.7	93.6	90.0	87.6	78.1	89.6

CQS Q values

Q1	Q2	Q3	Q4	Q5	Q6	Q7	Q8	Q9	Q10	Q11	Q12	Q13	Q14	Q15
87.4	98.5	83.7	77.9	82.0	84.0	88.2	92.2	97.8	91.9	88.3	87.9	88.0	81.8	84.4

CQS: 86.4



## Color parameters

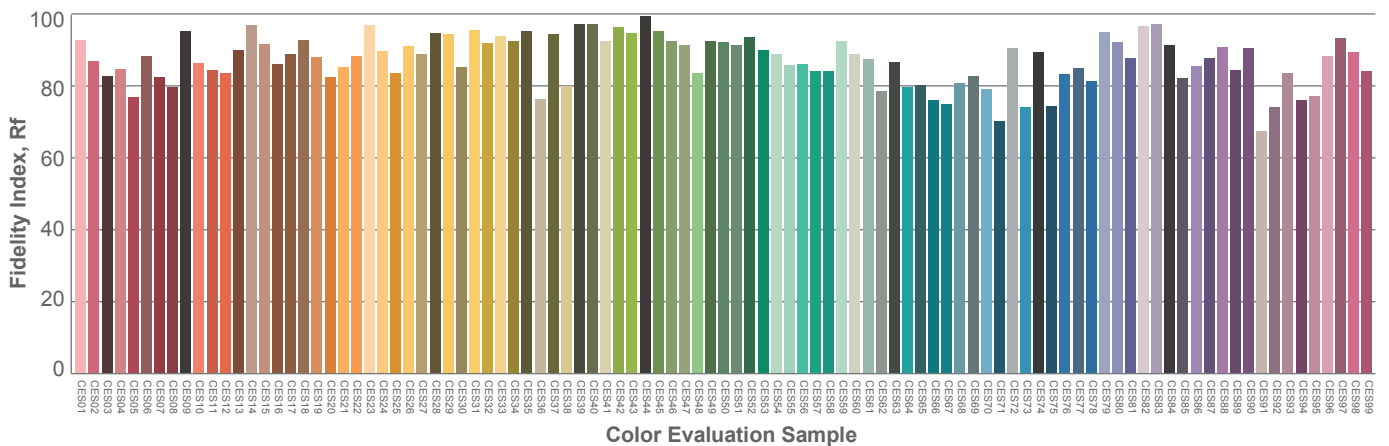
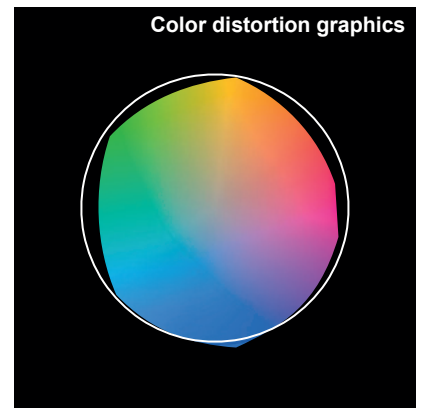
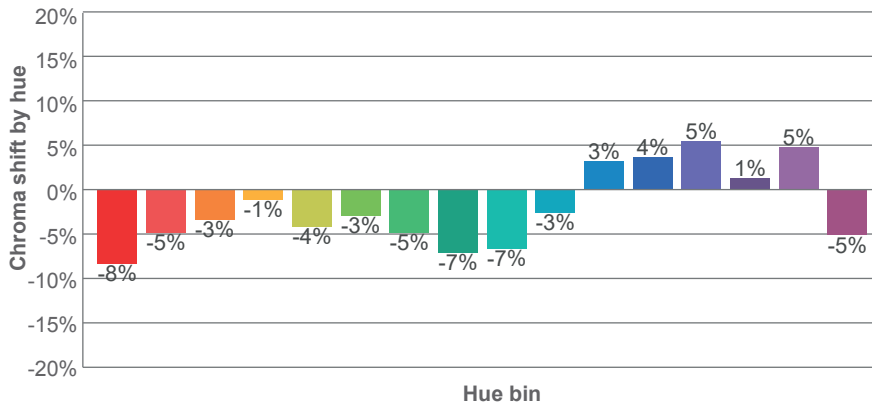
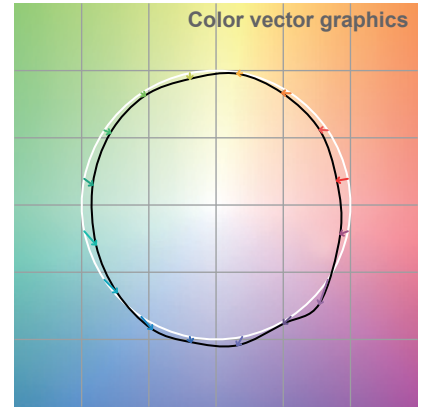
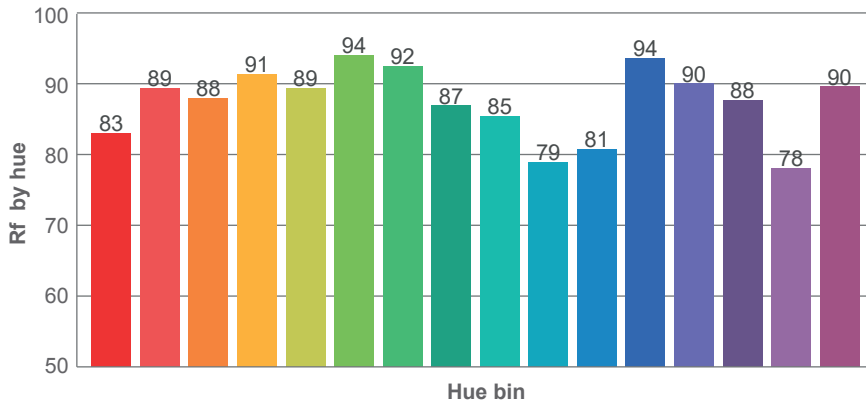
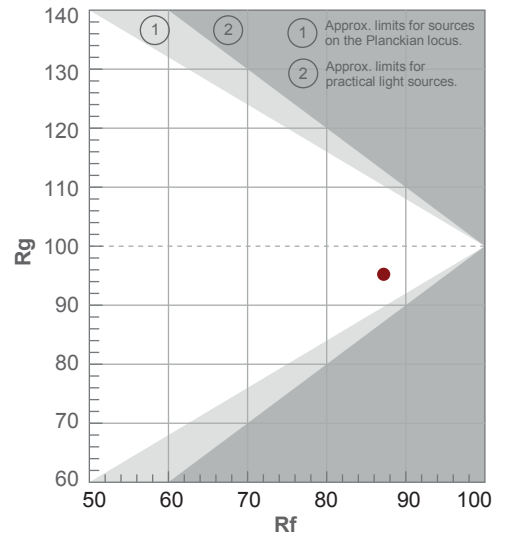
Color temperature	Color rendering index	Red component	Color fidelity	Color gamut	Color quality scale	Color coordinate cie 1931	Color coordinate cie 1931	Color coordinate	Color coordinate	Color deviation from black body
CCT	CRI	CRI R9	TM30 Rf	TM30 Rg	CQS	x	y	u	v	Δuv
5949 K	88.4	42.1	87.2	95.2	86.4	0.323	0.341	0.200	0.317	0.0013

# TM-30 DETAILS

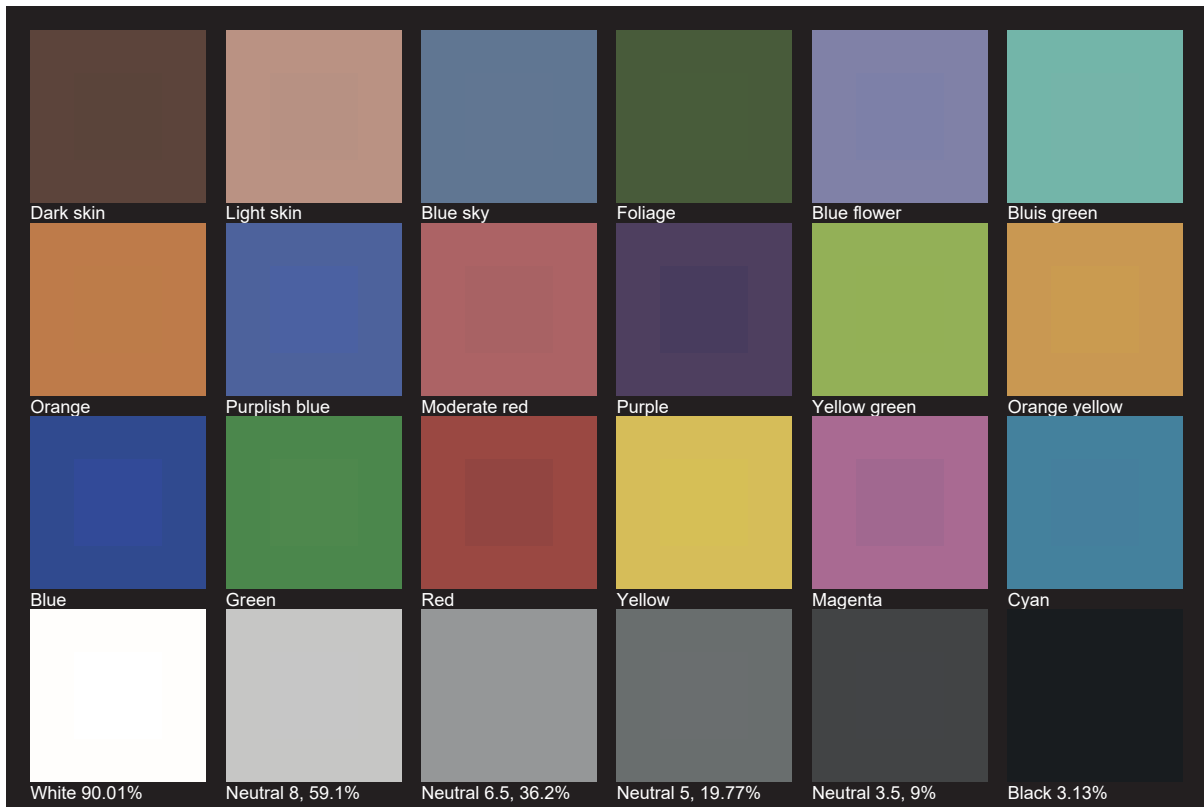
**Rf 87.2**  
Fidelity index Rf

**Rg 95.2**  
Gamut index Rg

Hue Bin	R <sub>f</sub>	Shifts (%)	
		Chroma	Hue
1	83	-8%	0%
2	89	-5%	4%
3	88	-3%	5%
4	91	-1%	4%
5	89	-4%	1%
6	94	-3%	-1%
7	92	-5%	-1%
8	87	-7%	3%
9	85	-7%	11%
10	79	-3%	13%
11	81	3%	12%
12	94	4%	2%
13	90	5%	-5%
14	88	1%	-7%
15	78	5%	-18%
16	90	-5%	-3%



# TLCI 89







**AYRTON**

Digital Lighting