

ICECOLOR 500



AYRTON
Digital Lighting

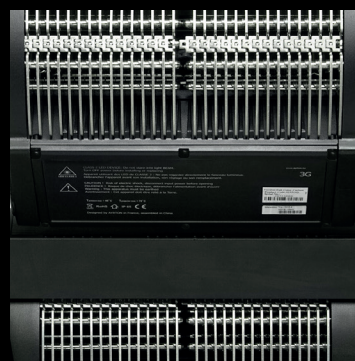
ICECOLOR 500 STATIC LUMINAIRES

ICECOLOR™500 has truly exceptional size-to-weight and output-to-power consumption ratios. It is fitted with two modules each comprising 20 x 10 Watt RGBW LED sources. The angle of each module can be adjusted independently, and each can be filtered and controlled separately to suit all scenarios, in any configuration. Equipped with high-performance 45 mm optics and a cutting-edge, fanless cooling system based on heatpipe technology, the ICECOLOR™500 offers a maximum flux in excess of 10,000 lumen for a total power consumption of 400 Watt. A highly advanced Constant Colour mode guarantees consistency of colours all night long which, coupled with very low derating, makes ICECOLOR™500 the perfect tool for long lighting periods, delivering perfect colour rendering for both permanent and non-permanent installations.



Thanks to its high protection level (IP65 rated), ICECOLOR™500 can be used indoors or outdoors. Equipped as standard with a wireless DMX receiver and delivered in a dedicated flight-case, it has been designed for quick and easy set-up to answer the most demanding needs of lighting designers and service providers.

These factors combine to make ICECOLOR™500 a very versatile projector: monochrome or dual colour cyclorama lighting, downstage or upstage lighting, matrix effects, audience blinders and strobe-lighting in open white or colours... the only limitation to ICECOLOR™500 is your imagination!





OPTICS

- High-efficiency PMMA secondary optics
- 85% optic efficiency
- Beam aperture: 11°
- Beam aperture can be modified using dedicated AYRTON optic filters

LIGHT SOURCE

- 40 multi-chip 10 Watt LED sources
- Light output: up to 10,000 lumen
- Luminous intensity: 300,000 cd
- Rated sources life: up to 25,000 hours
- Flicker free sources management, suitable for TV applications and all video recorded events

COLOURS

- Sophisticated 4 colours RGBW mixed, reaching high Colour Rendering Index
- Uniform light beam with no colour shadows, and rich saturated and pastel colour-hues
- 4.29 billion colours
- Virtual colour wheel, including most usuals white colour temperature presets
- Dynamic colour macro effect with variable speed

FROST / DIFFUSION

- Optional VNSP (Very Narrow Spot 13°), NSP (Narrow Spot 24°), MFL (Medium Flood 33°), WFL (Wide Flood 42°), VWFL (Very Wide Flood 60°) or UWFL (Ultra Wide Flood 80°) circular beam filters available
- Optional 33°x13°, 62°x16°, horizontal or vertical models elliptic beam filters available

DIMMER / STROBE

- Electronic dimmer, allowing perfect light adjustment from 0 to 100% without colour variation
- White or colour strobe effect, with speed adjustment from 1 to 25 flashes per second

SOFTWARE FACILITIES

- Local DMX addressing of the luminaire and its optional parameters through its built-in LCD panel control
- Remote DMX addressing of the luminaire and its optional parameters through a standard RDM DMX controller
- Constant colour system, whatever the internal and external temperature conditions
- 2 light modes, optimized for architectural or entertainment applications
- Built-in pattern effects with speed and fade controls for scenic applications
- Information menu including hour counter, temperature, software version

HARDWARE FACILITIES

- Graphic LCD display for addressing and special functions settings, with flip function
- 5 menu buttons to set the functions
- Over temperature protection
- Integrated DMX Wireless receiver from Wireless Solution
- DMX 512 Input / Output through waterproof lockable connectors
- Waterproof lockable connectors to XLR5 connectors DMX adapters (IN / OUT) included
- Power supply input through waterproof lockable connector
- Adapter cable for waterproof lockable connector included

CONTROL

- DMX 512 protocol, through DMX cable or wireless system
- Stand-alone mode and Master/Slave modes
- Local control panel, with LCD display
- Choice of 9 DMX modes (from 4 to 24 DMX channels)

POWER SUPPLY

- Electronic supply with PFC active
- 110 to 240 Volts – 50/60Hz
- Power 400 Watt max

COOLING SYSTEM

- Advanced natural convection system
- Permanent thermal regulation
- Safety protection against temperatures excesses

HOUSING

- Large floor stand, with fixing facilities
- Glass covers in die-cast aluminium, front glasses in tempered glass
- Heatsinks in aluminium and copper, satin finish
- Aluminium yokes
- Side covers in ABS PC (V0 Class)
- External hardware screws in stainless steel
- IP65 protection rating (indoor and outdoor use)
- Exterior finish: black (Carbon)

INSTALLATION

- 2 removable Omega ¼ turn brackets (included)
- Several holes on the integrated floor stand
- 4 rotating handles, to adjust the 2 source blocks without tool

OPERATING PARAMETERS

- Operating positions: all (device on floor or fixed to a support)
- Maximum permitted ambient temperature (Ta max): 40°C (104°F)
- Minimum permitted ambient temperature authorised (Ta min): -5°C (23°F)
- Minimum usage distance: 1.5 m (4.92 ft)

COMPLIANCE

EU (EMC)

- EN 55015 (2006) - EN 55015 A2 (2009)
- EN 61547 (2009) - EN 61000-3-2 (2006)
- EN 61000-3-2 A2 (2009) - EN 61000-3-3 (2008)

EU (LVD)

- EN 60598-1 (2008) - EN 60598-2-17 (1989)
- EN 60598-2-17 A2 (1991)

SIZE

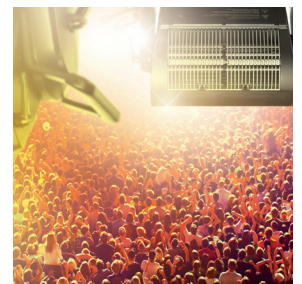
- Product: 587 x 626 x 300 mm (l x h x d)
- Flightcase: 680 x 870 x 550 mm (l x h x d)

WEIGHT

- Product: 36.4 KG
- Product inside flightcase, including accessories: 80 KG

PRODUCT CODES

- 025510: ICECOLOR 500 STATIC LUMINAIRE





www.ayrton.eu