

# MERAK



**AYRTON**  
Digital Lighting

# MERAK AUTOMATED LUMINAIRE

Ayrton's new MERAK is a powerhouse of technology that features a proprietary 10:1 optical zoom system, combined with a 250-Watt low-etendue, RGBW multichip LED module. The 7° to 70° zoom employs light pipe technology paired with a new textured Fresnel lens design to ensure perfectly homogenous colour mixing regardless of the colour combination selected.

With its single-source transmitting lens, MERAK™ casts wonderfully crisp light and shadows. The fixture is also equipped with a de-focusable rotating beam shaping optic.



MERAK™ puts new technology to great use with a next-generation power supply that incorporates active power factor correction (PFC) and a DC/DC converter in an ultra compact module for more than 95 percent efficiency. A new liquid cooling system is also employed, which permits the fixture to operate in all positions. These innovations allow the LED emitters to be run at full power continuously without any loss of performance. To celebrate Ayrton's 15th Anniversary, MERAK™ presents a sleeker, updated, industrial design, with perfectly straightened yoke arms, and minimalist base, as well as a new menu navigation system using a single control wheel. MERAK™ can be controlled via DMX-512 w/RDM, or a wireless link using CRMX TiMo RDM from LumenRadio™.





## OPTICS

- Motorized linear zoom system, ratio 10:1
- Beam aperture: 7° to 70°
- 168 mm textured fresnel lens for ultimate performance
- High-efficiency optical system

## LIGHT SOURCE

- 1 multi-chip 250 Watt LED sources
- Light output: up to 4,300 lumen
- Luminous intensity: 200,000 cd (narrow angle)
- Rated sources life: up to 50,000 hours
- Flicker free sources management, suitable for TV applications and all video recorded events

## MOVEMENT

- Extremely accurate positioning
- Moving-head operated via either 8 or 16 bit resolution
- High-resolution stepper motors operated via microprocessors ensure extreme accuracy and smooth movements.
- Pan and tilt automatic repositioning
- Moving-head range: 540° (pan), 270° (tilt)

## COLOURS

- Sophisticated 4 colours RGBW mixed, reaching high Colour Rendering Index
- Uniform light beam with no colour shadows, and rich saturated and pastel colour-hues
- 4.29 billion colours (8 bit resolution)
- Virtual colour wheel, including most usuals white colour temperature presets
- Dynamic colour macro effect with variable speed

## EFFECTS

- Indexable de-focusable rotating beam shaping optic

## DIMMER / STROBE

- Electronic dimmer, allowing perfect light adjustment from 0 to 100% without colour variation
- White or colour strobe effect, with speed adjustment from 1 to 25 flashes per second

## SOFTWARE FACILITIES

- Local DMX addressing of the luminaire and its optional parameters through its built-in LCD panel control
- Remote DMX addressing of the luminaire and its optional parameters through a standard RDM DMX controller
- Information menu including hour counter, temperature, software version

## HARDWARE FACILITIES

- Graphic LCD display for addressing and special functions settings, with flip function
- Clicking jog wheel to set the functions
- Over temperature protection
- Integrated LumenRadio's wireless CRMX TiMo RDM receiver
- XLR 5 pin male and female connectors for DMX connection
- PowerCON TRUE1 male and female connectors for power connection

## CONTROL

- DMX 512 protocol, through DMX cable or wireless system
- DMX-RDM compatible
- Stand-alone mode and Master/Slave modes
- Local control panel, with LCD display
- Choice of 3 DMX modes (from 17 to 22 DMX channels)

## POWER SUPPLY

- Electronic supply with active PFC
- 110 to 240 Volts – 50/60Hz
- Power 400 Watt max

## COOLING SYSTEM

- Advanced liquid cooling system
- Self adjusting variable speed fans for quiet operation (Auto mode)
- Selectable auto, stage & studio ventilation modes
- Safety protection against temperatures excesses

## HOUSING

- Moving-head skeleton made of aluminium and steel metal plates
- Heatsinks in aluminium and copper
- Moulded covers in self-extinguishing fire retardant ABS PC (V0 class)
- Two sides handles for transportation
- Four strong feet for better stability
- IP20 protection rating
- Exterior finish: black (Carbon)

## INSTALLATION

- Fastening brackets system: two Omega ¼ turn brackets designed for use with standard clamps
- Mounting points: eight ¼ turn locking fittings allowing installation of Omega brackets on luminaire
- Safety cable attachment point

## OPERATING PARAMETERS

- Operating positions: all (device on floor or fixed to a support)
- Maximum permitted ambient temperature (Ta max): 45°C (113°F)
- Minimum permitted ambient temperature (Ta min): -10°C (14°F)
- Minimum usage distance: 0.5 m (1.64 ft)

## COMPLIANCE

### EU (EMC)

- EN 55015 (2006) - EN 55015 A2 (2009)
- EN 61547 (2009) - EN 61000-3-2 (2006)
- EN 61000-3-2 A2 (2009) - EN 61000-3-3 (2008)

### EU (LVD)

- EN 60598-1 (2008) - EN 60598-2-17 (1989)
- EN 60598-2-17 A2 (1991)

## SIZE

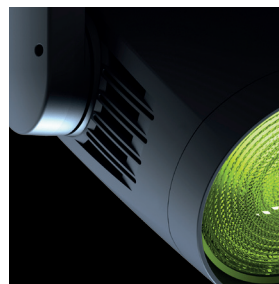
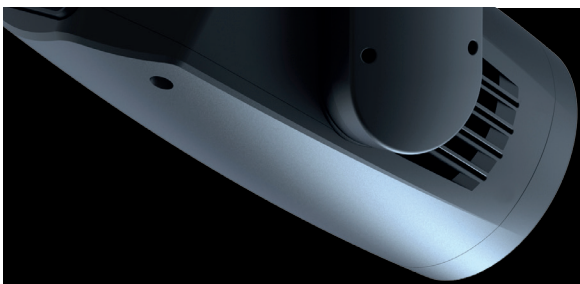
- Product: 365 x 555 x 385 mm (l x h x d)
- -Flight-case foam: 450 x 585 x 280 mm (l x h x d)

## WEIGHT

- Product: 13.8 KG

## PRODUCT CODES

- 013550: MERAK AUTOMATED LUMINAIRE





[www.ayrton.eu](http://www.ayrton.eu)