

MAGICPANEL-FX



AYRTON
Digital Lighting

MAGICPANEL-FX CREATIVE SOLUTION

MAGICPANEL™FX is the exciting new multi-function, multi-use luminaire descended from the renowned MAGICPANEL™R (patent pending). With a revolutionary new optical zoom system that has no visible moving parts and a stationary transmitting lens, this proprietary system has a 15:1 zoom ratio with a range of 3.6° to 53°. The front face of MAGICPANEL™FX is comprised of a 5 x 5 array of squared lenses with perfectly isolated emitters – which offer exciting new possibilities for creating 2D graphical effects. Each of the 25 squared 65 mm output lenses have an optical surface equivalent to that of an 80 mm round lens, combined with an ultra-powerful, low-etendue, LED emitter. MAGICPANEL™FX produces an extremely powerful beam capable of creating extraordinarily new 3D volumetric effects.



With 900 W of total power, the versatile MAGICPANEL™FX has 25 next-generation RGBW high-power LED emitters and an active phase-change liquid cooling system using a heat pipe for intensive use in “wash light” mode. The continuous, unlimited, rotation on pan and tilt, first introduced on the legendary MAGICPANEL™602 in 2013, is standard. MAGICPANEL™FX has serial connectivity and can be controlled using DMX-RDM, ArtNet™, sACN or wireless CRMX TiMo RDM by LumenRadio™.





OPTICS

- Motorized linear zoom system, ratio 15:1
- Beam aperture: 3.6° to 53°
- High-efficiency optical system

LIGHT SOURCE

- 25 multi-chip High-Power LED sources
- Light output: up to 13,500 lumens
- Rated sources life: up to 25,000 hours
- Flicker free sources management, suitable for TV applications and all video recorded events

MOVEMENT

- Continuous pan and tilt rotation
- Extremely accurate positioning
- Moving-head operated via either 8 or 16 bit resolution
- High-resolution stepper motors operated via microprocessors ensure extreme accuracy and smooth movements.
- Pan and tilt automatic repositioning

COLOURS

- Sophisticated 4 colours RGBW mixing, reaching high Colour Rendering Index
- Uniform light beam with no colour shadows, and rich saturated and pastel colour-hues
- 4.29 billion colours (8 bit resolution)
- Virtual colour wheel, including most usual white colour temperature presets
- Dynamic colour macro effects with variable speed

DIMMER / STROBE

- Electronic dimmer, allowing perfect light adjustment from 0 to 100% without colour variation
- White or colour strobe effect, with speed adjustment from 1 to 25 flashes per second

SOFTWARE FEATURES

- Local DMX addressing of luminaire and optional parameters through its built-in LCD control panel
- Remote DMX addressing of luminaire and optional parameters through a standard RDM DMX controller
- Built-in pattern effects with speed and fade controls for scenic applications
- Information menu including hour counter, temperature & software version

HARDWARE FEATURES

- Graphic LCD display for addressing and special functions settings, with flip function
- 6 menu buttons to set the functions
- Over temperature protection
- Integrated LumenRadio's wireless CRMX TiMO RDM receiver
- XLR 5 pin male and female connectors for DMX connection
- Ethercon RJ45 IN / OUT connectors for ArtNet & sACN connection
- PowerCON TRUE1 male and female connectors for power connection

CONTROL

- DMX 512 protocol, through DMX cable or wireless system
- DMX-RDM compatible
- Stand-alone mode and Master/Slave modes
- ArtNet & sACN protocols through Ethernet cable
- Local control panel, with LCD display
- Choice of 3 DMX modes (from 19 to 118 DMX channels)

POWER SUPPLY

- Electronic supply with active PFC
- 100 to 240 Volts - 50/60Hz
- Power 1,000 W max

COOLING SYSTEM

- Advanced cooling system based on heatpipe technology
- Self adjusting variable speed fans for quiet operation (Auto mode)
- Selectable auto, stage & studio ventilation modes
- Safety protection against temperatures excesses

HOUSING

- Moving-head skeleton made of aluminium and steel metal plates
- Heatsinks in aluminium and copper, satin finish
- Moulded covers in self-extinguishing fire retardant ABS PC (V0 class)
- Two sides handles for transportation
- Four strong wide feet for better stability
- IP20 protection rating
- Exterior finish: black (Carbon)

INSTALLATION

- Fastening brackets system: two Omega ¼ turn brackets designed for use with standard clamps
- Mounting points: four ¼ turn locking fittings allowing installation of omega brackets on projector
- Safety cable attachment point

OPERATING PARAMETERS

- Operating positions: all (device on floor or fixed to a support)
- Maximum permitted ambient temperature (Ta max): 45°C (113°F)
- Minimum permitted ambient temperature (Ta min): -10°C (14°F)
- Minimum usage distance: 1.5 m (4.92 ft)

COMPLIANCE

- EMC Directive 2014/30/EU
- LVD Directive 2014/35/EU

SIZE

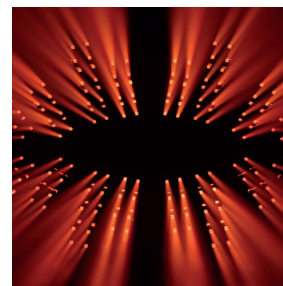
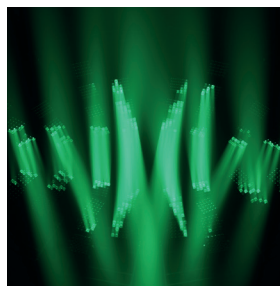
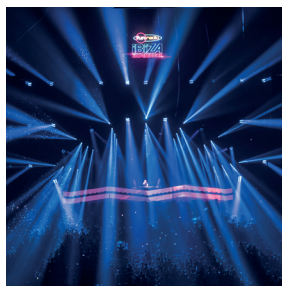
- Product: 486 x 641 x 307 mm (l x h x d)
- Flight-case foam: 569 x 672 x 367 mm (l x h x d)

WEIGHT

- Product: 33.7 KG

PRODUCT CODES

- 015670: MAGICPANEL-FX CREATIVE SOLUTION





AYRTON

Digital Lighting

www.ayrton.eu