

VERSAPIX-RS



AYRTON
Digital Lighting

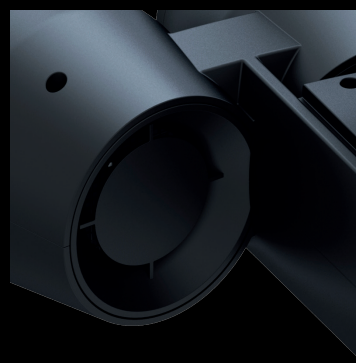
VERSAPIX-RS CREATIVE SOLUTIONS

VERSAPIX™, a contraction of versatile and pixel, is a veritable fan of light. Brilliantly evolved from the VERSAPIX™100 concept first introduced in 2012, the VERSAPIX™RS is the first in the new ultra-radical “RS” product series. A new 40 Watt reduced-scale multi-chip RGBW LED emitter has been combined with innovative 94 mm diameter high-efficiency optics.

Once again pushing the limits, this luminaire can generate an ultra-powerful 3.5° beam with a record-breaking centre-beam intensity of 200 candela per lumen. With three times more power and six times more centre-beam intensity, the VERSAPIX™RS offers infinite possibilities for creating 3D volumetric lighting effects regardless of the ambient light conditions.



Because of its configuration and power, the VERSAPIX™RS required the development of a specific new cooling system for each of the emitters that evacuates the air at the edges of the optics while preventing haze and dust contamination (patent pending). The VERSAPIX™RS, the most mobile of the fixed luminaires, was designed to be modular, with five emitters in a fan-shaped 90° arrangement, enabling independent control of each of the emitters. This offers a range of installation possibilities, such as combining the luminaires to create complex shapes (disks, spheres, cylinders, etc.) or using individual luminaires in a variety of architectural configurations. With the VERSAPIX™RS, your imagination is the limit.





OPTICS

- Beam aperture: 3,5°
- 82% optic efficiency
- High-efficiency 94 mm PMMA optics

LIGHT SOURCE

- 5 Multi-chip 40 Watt LED sources
- Light output: up to 5,000 lumen
- Rated sources life: up to 50,000 hours
- Flicker free sources management, suitable for TV applications and all video recorded events

COLOURS

- Sophisticated 4 colours RGBW mixed, reaching high Colour Rendering Index
- Uniform light beam with no colour shadows, and rich saturated and pastel colour-hues
- 4.29 billion colours (8 bit resolution)
- Virtual colour wheel, including most usuals white colour temperature presets
- Dynamic colour macro effect with variable speed

DIMMER / STROBE

- Electronic dimmer, allowing perfect light adjustment from 0 to 100% without colour variation
- White or colour strobe effect, with speed adjustment from 1 to 25 flashes per second

SOFTWARE FACILITIES

- Local DMX addressing of the luminaire and its optional parameters through its built-in LCD panel control
- Remote DMX addressing of the luminaire and its optional parameters through a standard RDM DMX controller
- Built-in pattern effects with speed and fade controls for scenic applications
- Information menu including hour counter, temperature, software version

HARDWARE FACILITIES

- Graphic LCD display for addressing and special functions settings, with flip function
- 6 menu buttons to set the functions
- Over temperature protection
- XLR 5 pin male and female connectors for DMX connection
- PowerCON TRUE1 male and female connectors for power connection

CONTROL

- DMX 512 protocol, through DMX cable
- DMX-RDM compatible
- Stand-alone mode and Master/Slave modes
- Local control panel, with LCD display
- Choice of 2 DMX modes (from 13 to 29 DMX channels)

POWER SUPPLY

- Electronic supply with active PFC
- 110 to 240 Volts - 50/60Hz
- Power 250 Watt max

COOLING SYSTEM

- Advanced cooling system
- Self adjusting variable speed fans for quiet operation (Auto mode)
- Selectable auto, stage & studio ventilation modes
- Safety protection against temperatures excesses

HOUSING

- Body in die-cast aluminium
- Control panel in tempered glass
- Heatsinks in aluminium, satin finish
- Filter holder in self-extinguishing fire retardant ABS PC (V0 class)
- Double yoke in aluminium
- IP20 protection rating
- Exterior finish: black (Carbon)

INSTALLATION

- 4 fixing points for multiple products assembly
- Several holes into the yoke to install clamp
- 2 rotating handles to adjust yoke
- Safety cable attachment point

OPERATING PARAMETERS

- Operating positions: all (device on floor or fixed to a support)
- Maximum permitted ambient temperature authorised (Ta max): 45°C (113°F)
- Minimum permitted ambient temperature authorised (Ta min): -10°C (14°F)
- Minimum usage distance: 1.0 m (3.28 ft)

COMPLIANCE

EU (EMC)

- EN 55015 (2006) - EN 55015 A2 (2009)
- EN 61547 (2009) - EN 61000-3-2 (2006)
- EN 61000-3-2 A2 (2009) - EN 61000-3-3 (2008)

EU (LVD)

- EN 60598-1 (2008) - EN 60598-2-17 (1989)
- EN 60598-2-17 A2 (1991)

SIZE

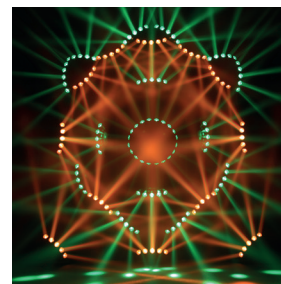
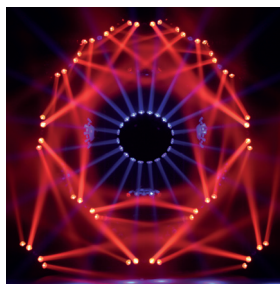
- Product: 676 x 300 x 285 mm (l x h x d)
- Flight-case foam: 750 x 325 x 220 mm (l x h x d)

WEIGHT

- Product: 8.7 KG

PRODUCT CODES

- 018550: VERSAPIX-RS CREATIVE SOLUTION





AYRTON

Digital Lighting

www.ayrton.eu