

# DREAMPANEL TWIN



**AYRTON**  
Digital Lighting

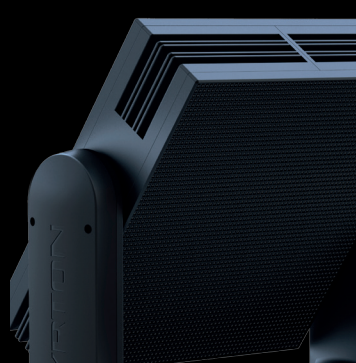
# DREAMPANEL TWIN IMAGING DISPLAYS

The DREAMPANEL™TWIN is a hybrid luminaire with the MAGICPANEL™ on one side and the DREAMPANEL™SHIFT on the other. Capable of continuous double rotation on the pan and tilt axes, the DREAMPANEL™TWIN can alternate between displaying high-definition video images and 3D volumetric lighting effects. The 6 mm pitch of the video side offers the perfect balance of definition required to display video media on stage, of screen size for enabling full HD, and of overall system brightness.

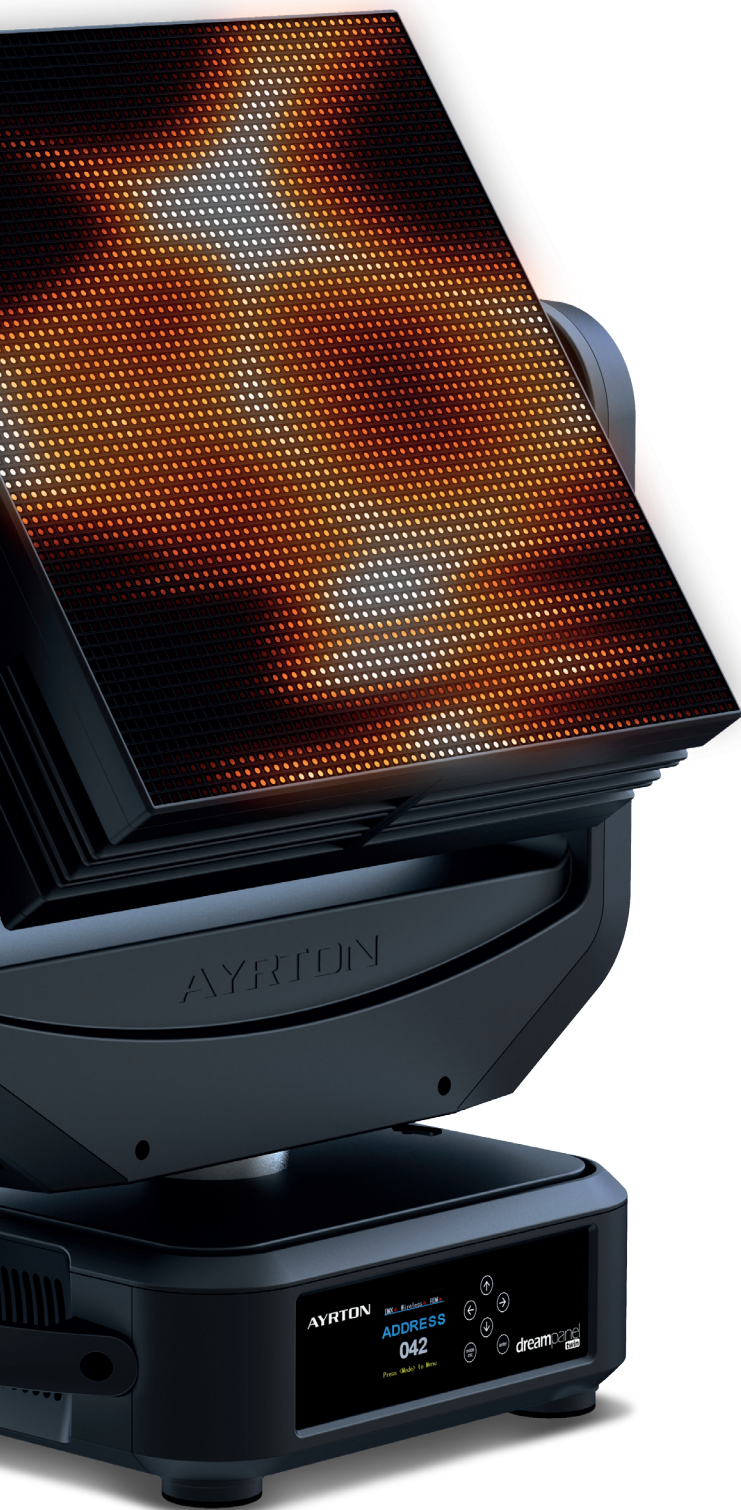
The MAGICPANEL™ side has improved resolution thanks to an 8 x 8 matrix featuring patented 45 mm diameter collimators that can obtain a full 6° angle and centre-beam luminous intensity of over 73 candela per lumen, a record achievement.



The innovative 45 mm optics enable the DREAMPANEL™TWIN to achieve almost the same performance as the MAGICPANEL™R by offering a much higher 64-pixel resolution, ideal for mapping effects. The video side uses the same array as the DREAMPANEL™SHIFT and is equipped with 4096 RGB LED emitters. Their black casing and internal reflector provide absolute contrast and allow for breathtaking graphic effects, while avoiding stray reflections from the other emitters. The two sides are controlled completely separately-the video side through the entirely new HDMI DREAMPANEL™HD-BOX control system, whilst the MAGICPANEL™ side used for 3D volumetric effects, along with the pan and tilt movement, is managed by Art-Net or sACN through an Ethernet link.







## OPTICS

### Creative solution side

- Beam aperture: 6°
- New 87% high-efficiency 45mm PMMA optics

## LIGHT SOURCE

### Imaging display side

- 4,096 Multi-chip RGB LED
- Black P-LCC-6 package for higher contrast
- Viewing angle: Lambertian emitter (120°)
- Pixel resolution: 64 x 64
- Pixel pitch (mm): 6
- Brightness (nit or cd/M2): 3,500

### Creative solution side

- 64 multi-chip 15 Watt LED sources
- Light output: up to 25,000 lumen
- Luminous intensity: 1,825,000 cd

### Imaging display side & Creative solution side

- Rated sources life: up to 50,000 hours
- Flicker free sources management

## MOVEMENT

- Continuous pan and tilt rotation
- Extremely accurate positioning
- Moving-head operated via either 8 or 16 bit resolution
- High-resolution stepper motors
- Pan and tilt automatic repositioning

## COLOURS

### Imaging display side

- 16.7 million colours
- 8 bit colour control, 14 bit internal colour control
- Colour calibration

### Creative solution side

- Sophisticated 4 colours RGBW mixed
- Uniform light beam with no colour shadows, and rich saturated and pastel colour-hues
- 4.29 billion colours (8 bit resolution)
- Virtual colour wheel, including most usuals white colour temperature presets

## SOFTWARE FACILITIES

### Imaging display side

- Panel software facilities access via DREAMPANEL HD-BOX controller
- Geometric panel configuration
- DVI & HDMI video format ingress via DREAMPANEL HD-BOX controller
- System fully compatible with all media servers

### Imaging display side & Creative solution side

- Local DMX addressing of the luminaire and its optional parameters through its built-in LCD panel control
- Remote DMX addressing of the luminaire and its optional parameters through a standard RDM DMX controller
- Information menu including hour counter, temperature, software version

## HARDWARE FACILITIES

- Graphic LCD display for addressing and special functions settings, with flip function
- 6 menu buttons to set the functions
- Ethercon RJ45 IN / OUT connectors for ArtNet & sACN connection
- Neutrik® HDMI 1.3a IN / OUT connectors for HDMI connection
- PowerCON TRUE1 male and female connectors for power connection

## CONTROL

- DMX 512 via ArtNet protocol only
- DMX-RDM compatible
- Local control panel, with LCD display
- ArtNet & sACN protocol through Ethernet cable
- HDMI through Neutrik® HDMI 1.3a connectors
- Choice of 3 DMX modes (from 18 to 272 DMX channels)

## POWER SUPPLY

- Electronic supply with active PFC
- 110 to 240 Volts - 50/60Hz
- Power 990 Watt max

## COOLING SYSTEM

- Advanced cooling system
- Self adjusting variable speed fans for quiet operation (Auto mode)
- Selectable auto, stage & studio ventilation modes
- Safety protection against temperatures excesses

## HOUSING

- Moving-head skeleton made of aluminium and steel metal plates
- Moulded covers in self-extinguishing fire retardant ABS PC (V0 class)
- Two sides handles for transportation
- Four strong wide feet for better stability
- IP20 protection rating
- Exterior finish: black (Carbon)

## INSTALLATION

- Fastening brackets system: two Omega ¼ turn brackets designed for use with standard clamps
- Mounting points: four ¼ turn locking fittings allowing installation of Omega brackets
- Safety cable attachment point

## OPERATING PARAMETERS

- Operating positions: all
- Maximum permitted ambient temperature (Ta max): 45°C (113°F)
- Minimum permitted ambient temperature (Ta min): -10°C (14°F)
- Minimum usage distance: 2.5 m (8.2 ft)

## COMPLIANCE

### EU (EMC)

- EN 55015 (2006) - EN 55015 A2 (2009)
- EN 61547 (2009) - EN 61000-3-2 (2006)
- EN 61000-3-2 A2 (2009) - EN 61000-3-3 (2008)

### EU (LVD)

- EN 60598-1 (2008) - EN 60598-2-17 (1989)
- EN 60598-2-17 A2 (1991)

## SIZE

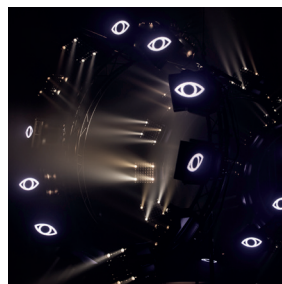
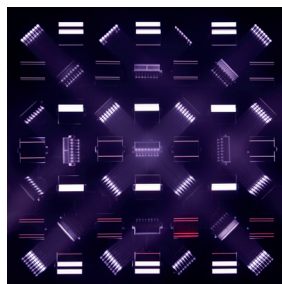
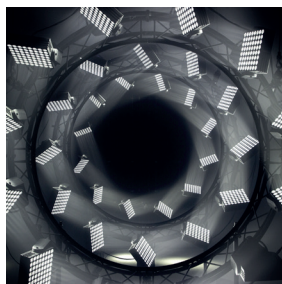
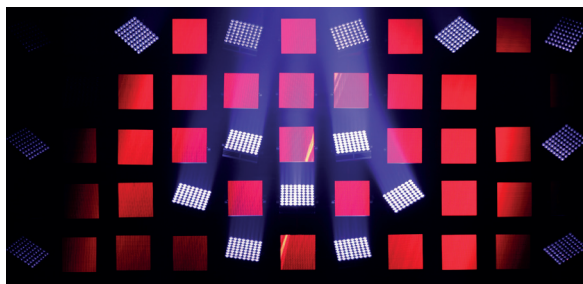
- Product: 473 x 641 x 307 mm (l x h x d)
- Flight-case foam: 559 x 662 x 367 mm (l x h x d)

## WEIGHT

- Product: 23.8 KG

## PRODUCT CODES

- 017550: DREAMPANEL TWIN IMAGING DISPLAY





**AYRTON**

Digital Lighting

[www.ayrton.eu](http://www.ayrton.eu)